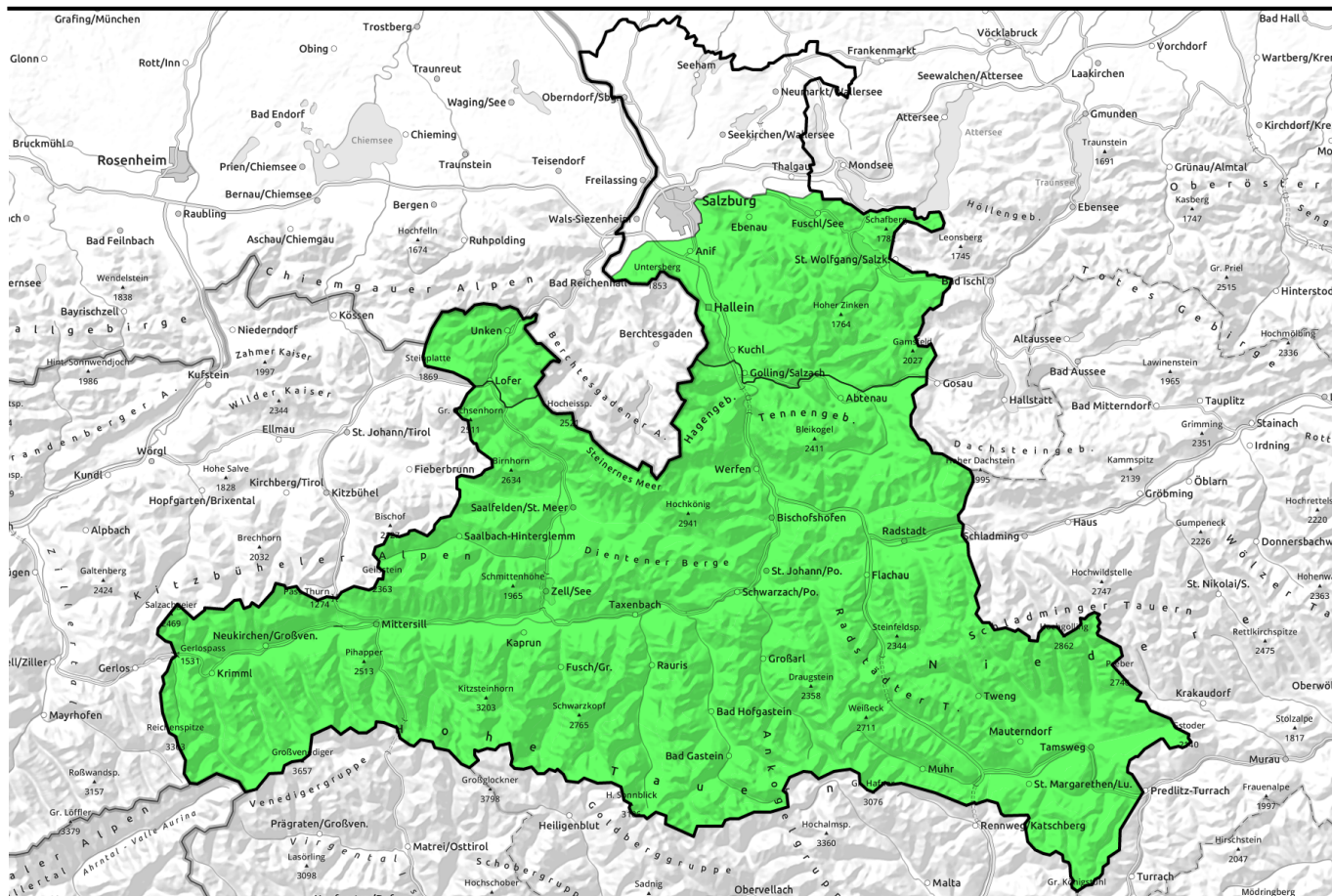


28.03.2021, morning



Be attentive to daytime danger cycle



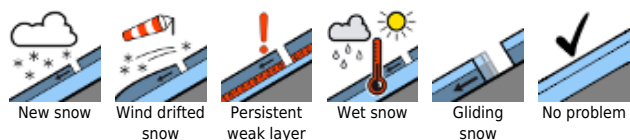
Untersbergstock, Osterhorngruppe, Gamsfeldgruppe, Chiemgauer Alpen, Heutal, Reiteralpe



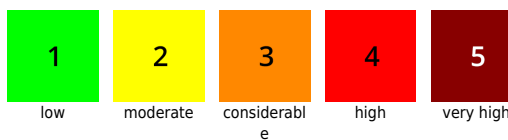
Loferer und Leoganger Steinberge, Steinernes Meer, Hochkönig, Hagengebirge, Göllstock, Tennengebirge, Gosaukamm, Kitzbüheler Alpen, Glemmtal, Oberperngauer Grasberge, Dientner Grasberge, Pongauer Grasberge, Niedere Tauern Nord, Goldberggruppe Nord, Glocknergruppe Nord, Großvenedigergruppe Nord, Großvenedigergruppe Alpenhauptkamm, Glocknergruppe Alpenhauptkamm, Goldberggruppe Alpenhauptkamm, Niedere Tauern Alpenhauptkamm, Niedere Tauern Süd, Ankogelgruppe, Muhr, Nockberge



Avalanche problems



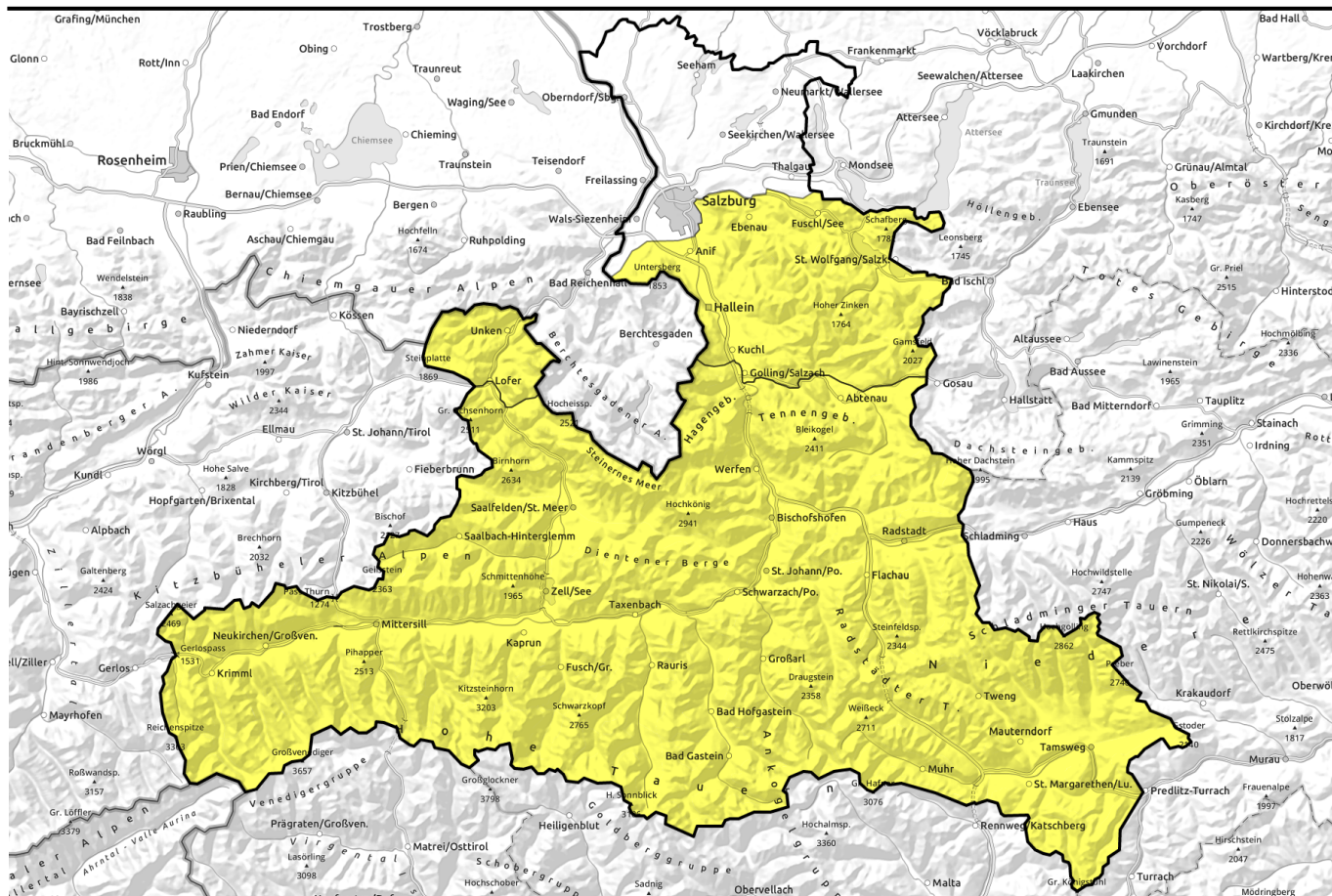
Danger ratings



Expositions



28.03.2021, afternoon



Tagesgang beachten



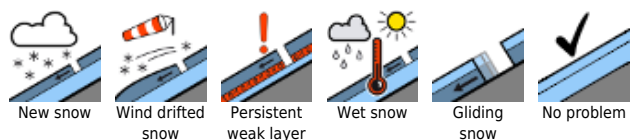
Untersbergstock, Osterhorngruppe, Gamsfeldgruppe, Chiemgauer Alpen, Heutal, Reiteralpe



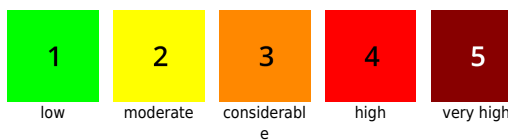
Loferer und Leoganger Steinberge, Steinernes Meer, Hochkönig, Hagengebirge, Göllstock, Tennengebirge, Gosaukamm, Kitzbüheler Alpen, Glemmtal, Oberpinzgauer Grasberge, Dientner Grasberge, Pongauer Grasberge, Niedere Tauern Nord, Goldberggruppe Nord, Glocknergruppe Nord, Großvenedigergruppe Nord, Großvenedigergruppe Alpenhauptkamm, Glocknergruppe Alpenhauptkamm, Goldberggruppe Alpenhauptkamm, Niedere Tauern Alpenhauptkamm, Niedere Tauern Süd, Ankogelgruppe, Muhr, Nockberge



Avalanche problems



Danger ratings



Expositions

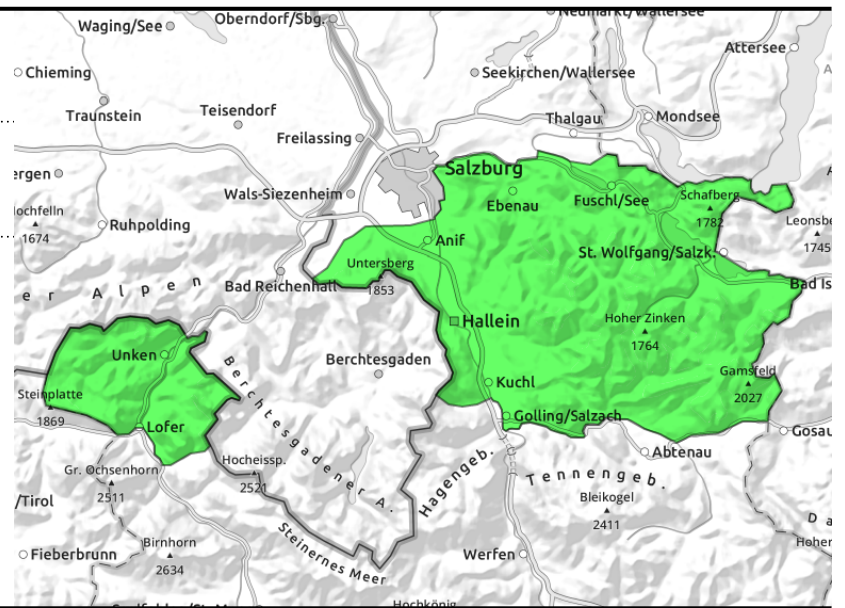


28.03.2021, morning

**Untersbergstock, Osterhorngruppe,
Gamsfeldgruppe, Chiemgauer Alpen, Heutal,
Reiteralpe**



Daytime cycle of naturally triggered avalanche activity



Slight danger cycle due to daytime warmth

In the morning, favourable conditions. In the afternoon, small-to-medium wet-snow avalanches in sunny extremely steep terrain are possible. These can also be triggered by winter sports enthusiasts. In isolated cases, small glide-snow avalanches.

Snowpack structure

The snowpack has settled well. During the day it becomes sticky and moist.

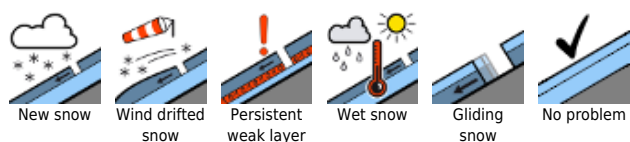
Weather

Predominantly sunny, good visibility. Residual fog in the morning hours will swiftly disperse. Temperatures will rise. At 1500 m: from -3 to +5 degrees.

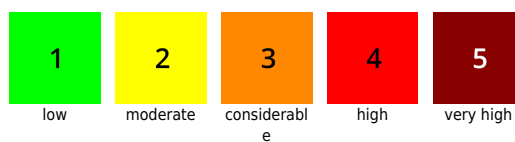
Outlook

Main orientation in coming days: the daytime danger cycle.

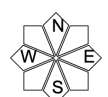
Avalanche problems



Danger ratings



Expositions

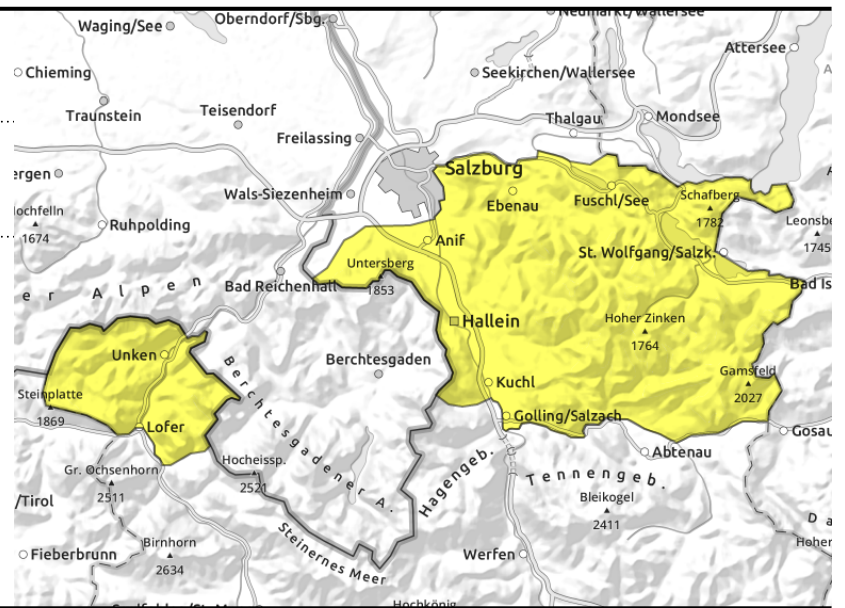


28.03.2021, afternoon

Untersbergstock, Osterhorngruppe, Gamsfeldgruppe, Chiemgauer Alpen, Heutal, Reiteralpe



Daytime cycle of naturally triggered avalanche activity



Slight danger cycle due to daytime warmth

In the morning, favourable conditions. In the afternoon, small-to-medium wet-snow avalanches in sunny extremely steep terrain are possible. These can also be triggered by winter sports enthusiasts. In isolated cases, small glide-snow avalanches.

Snowpack structure

The snowpack has settled well. During the day it becomes sticky and moist.

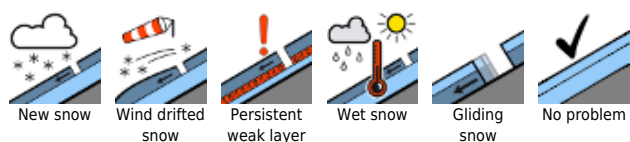
Weather

Predominantly sunny, good visibility. Residual fog in the morning hours will swiftly disperse. Temperatures will rise. At 1500 m: from -3 to +5 degrees.

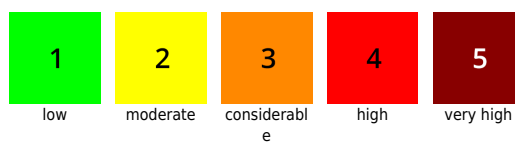
Outlook

Main orientation in coming days: the daytime danger cycle.

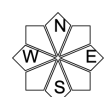
Avalanche problems



Danger ratings

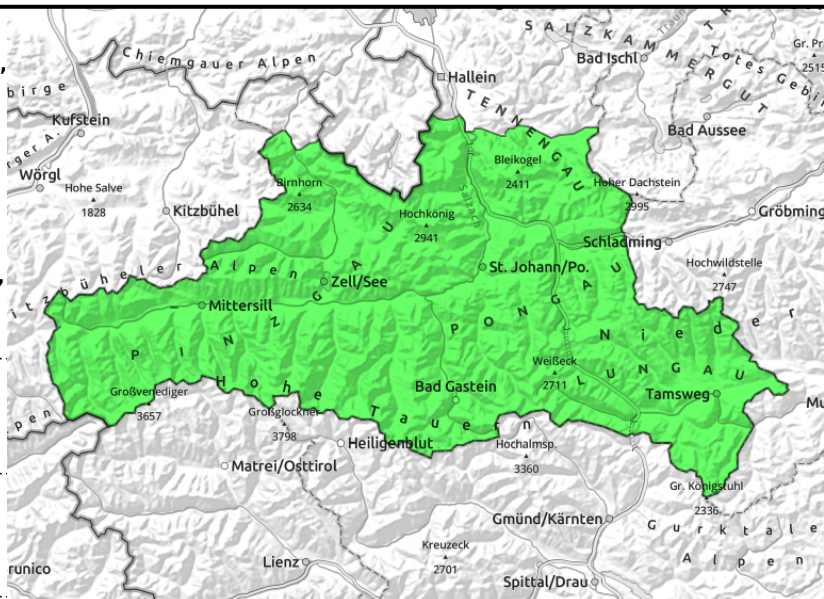


Expositions



28.03.2021, morning

Loferer und Leoganger Steinberge, Steinernes Meer, Hochkönig, Hagengebirge, Göllstock, Tennengebirge, Gosaukamm, Kitzbüheler Alpen, Glemmtal, Oberpinzgauer Grasberge, Dientner Grasberge, Pongauer Grasberge, Niedere Tauern Nord, Goldberggruppe Nord, Glocknergruppe Nord, Großvenedigergruppe Nord, Großvenedigergruppe Alpenhauptkamm, Glocknergruppe Alpenhauptkamm, Goldberggruppe Alpenhauptkamm, Niedere Tauern Alpenhauptkamm, Niedere Tauern Süd, Ankogelgruppe, Muhr, Nockberge



daytime cycle of naturally triggered avalanche activity



triggerable in few places in outlying terrain

Slight danger cycle due to daytime warming

In the morning, favourable conditions. In the afternoon, small-to-medium wet-snow avalanches in sunny extremely steep terrain are possible. These can also be triggered by winter sports enthusiasts. In isolated cases, small glide-snow avalanches.

A slab can be triggered in isolated cases on shady steep terrain above about 2300 m.

Snowpack structure

The snowpack has settled well. Every possible type of snow can be found on the snowpack surface, depending on aspect, altitude and time of day (from old powder to firn to slush and, in between, all types of melt-freeze crusts).

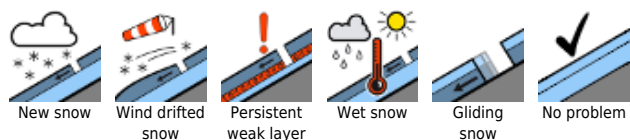
Weather

Predominantly sunny, good visibility. Residual fog in the morning hours will swiftly disperse. Brisk northerly winds at summit level. Temperatures will rise. At 2000 m, from -5 to +1 degree; at 3000 m, -7 degrees.

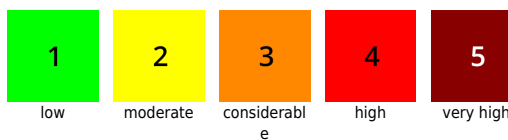
Outlook

Main orientation in coming days: the daytime danger cycle.

Avalanche problems



Danger ratings

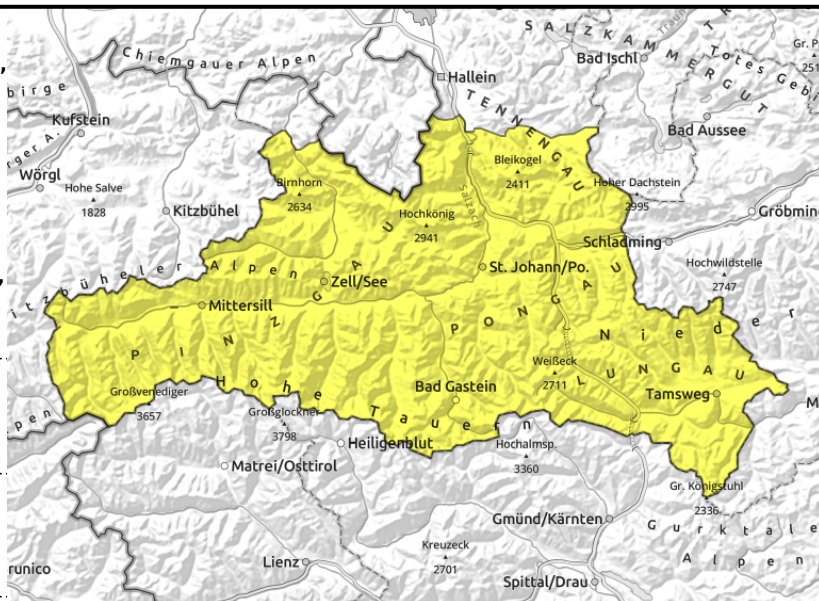


Expositions



28.03.2021, afternoon

Loferer und Leoganger Steinberge, Steinernes Meer, Hochkönig, Hagengebirge, Göllstock, Tennengebirge, Gosaukamm, Kitzbüheler Alpen, Glemmtal, Oberpinzgauer Grasberge, Dientner Grasberge, Pongauer Grasberge, Niedere Tauern Nord, Goldberggruppe Nord, Glocknergruppe Nord, Großvenedigergruppe Nord, Großvenedigergruppe Alpenhauptkamm, Glocknergruppe Alpenhauptkamm, Goldberggruppe Alpenhauptkamm, Niedere Tauern Alpenhauptkamm, Niedere Tauern Süd, Ankogelgruppe, Muhr, Nockberge



daytime cycle of naturally triggered avalanche activity



triggerable in few places in outlying terrain

Slight danger cycle due to daytime warming

In the morning, favourable conditions. In the afternoon, small-to-medium wet-snow avalanches in sunny extremely steep terrain are possible. These can also be triggered by winter sports enthusiasts. In isolated cases, small glide-snow avalanches.

A slab can be triggered in isolated cases on shady steep terrain above about 2300 m.

Snowpack structure

The snowpack has settled well. Every possible type of snow can be found on the snowpack surface, depending on aspect, altitude and time of day (from old powder to firn to slush and, in between, all types of melt-freeze crusts).

Weather

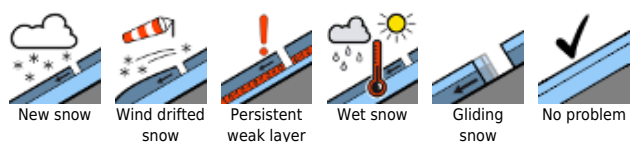
Predominantly sunny, good visibility. Residual fog in the morning hours will swiftly disperse. Brisk northerly winds at summit level. Temperatures will rise. At 2000 m, from -5 to +1 degree; at 3000 m, -7 degrees.

Outlook

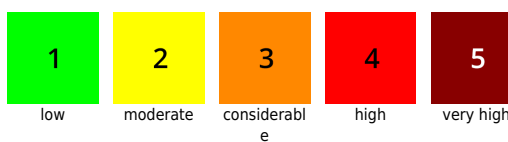
Main orientation in coming days: the daytime danger cycle.

Translated by Jeffrey McCabe, www.creativtrans.com

Avalanche problems



Danger ratings



Expositions

