

Avoid snowdrifts on extremely steep north-facing slopes

	<p>2300 m Oberpinzgauer Grasberge, Großvenedigergruppe Nord, Großvenedigergruppe Alpenhauptkamm, Glocknergruppe Nord, Glocknergruppe Alpenhauptkamm, Goldberggruppe Nord, Goldberggruppe Alpenhauptkamm, Ankogelgruppe, Muhr, Niedere Tauern Süd, Niedere Tauern Alpenhauptkamm</p>	
	<p>Nockberge</p>	
	<p>Osterhorngruppe, Gamsfeldgruppe, Untersbergstock, Chiemgauer Alpen, Heutal, Reiteralpe, Pongauer Grasberge, Niedere Tauern Nord</p>	
	<p>2100 m Kitzbüheler Alpen, Glemmtal, Loferer und Leoganger Steinberge, Dientner Grasberge, Steinernes Meer, Hochkönig, Hagengebirge, Göllstock, Tennengebirge, Gosaukamm</p>	

Avalanche problems



Danger ratings



Expositions

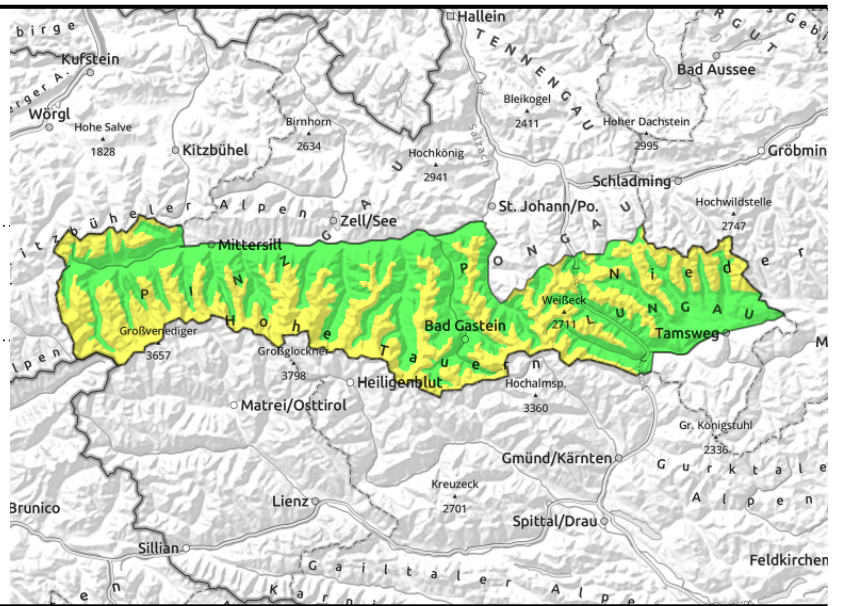


27.03.2021

Oberpinzgauer Grasberge, Großvenedigergruppe Nord, Großvenedigergruppe Alpenhauptkamm, Glocknergruppe Nord, Glocknergruppe Alpenhauptkamm, Goldberggruppe Nord, Goldberggruppe Alpenhauptkamm, Ankogelgruppe, Muhr, Niedere Tauern Süd, Niedere Tauern Alpenhauptkamm



triggerable in transitions from shallow to deep snow, esp. north-facing slopes



Circumvent snowdrifts in extremely steep terrain

As of about 2300 m, esp. on north-facing slopes, isolated slab avalanches can still be triggered. Generally only in extremely steep terrain or by large additional loading. Naturally triggered small-to-medium superficial wet-snow avalanches are possible in extremely steep terrain (glide-snow avalanches will be only isolated), primarily at altitudes of 1600-2300 m.

Snowpack structure

The snowpack has settled well. Melt-freeze crusts often dominate.

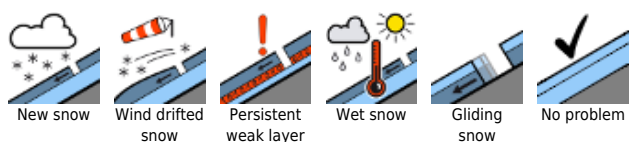
Weather

On Saturday, visibility often reduced due to clouds and fog, also minor snowfall is possible. Sunshine will be evident only occasionally. A brisk NW wind will be blowing. Temperatures will recede at all altitudes. At 2000 m: from +1 to -3 degrees; at 3000 m, from -6 to -9 degrees.

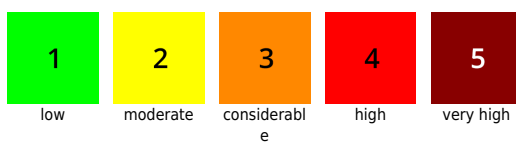
Outlook

On Sunday, slight daytime danger cycle due to renewed sunshine.

Avalanche problems



Danger ratings

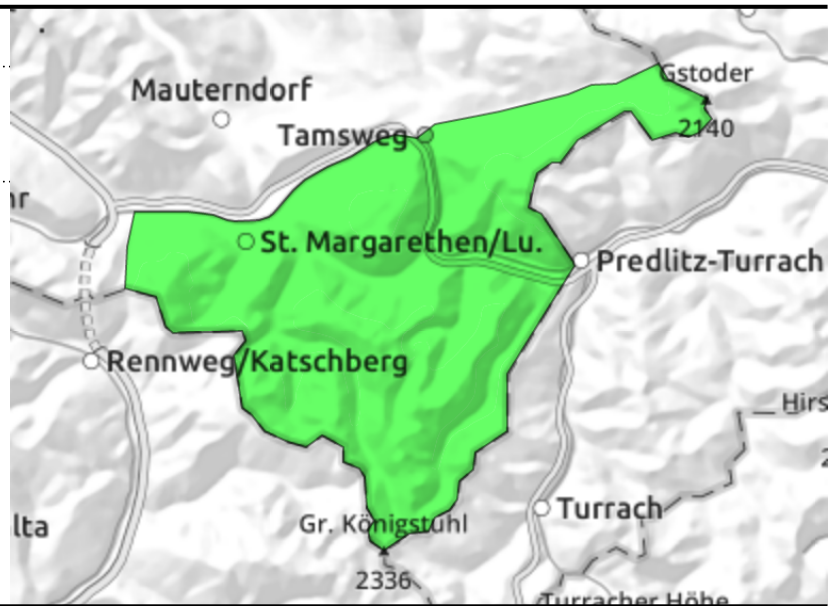
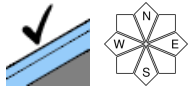


Expositions



27.03.2021

Nockberge



Favourable situation

Hardly any avalanche prone locations. Possibly in extremely steep north-facing terrain, a slab might be triggered.

A glide-snow avalanche or wet-snow slide is possible in isolated cases.

Snowpack structure

Stable snowpack with melt-freeze crusts of varying quality.

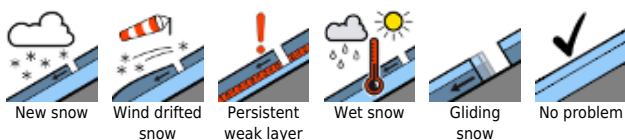
Weather

Good visibility and sunshine during the morning. In the afternoon, more cloud, plus NW winds will intensify. At 2000 m: +1 degree.

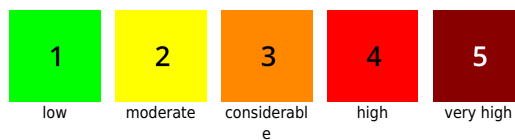
Outlook

Little change

Avalanche problems



Danger ratings

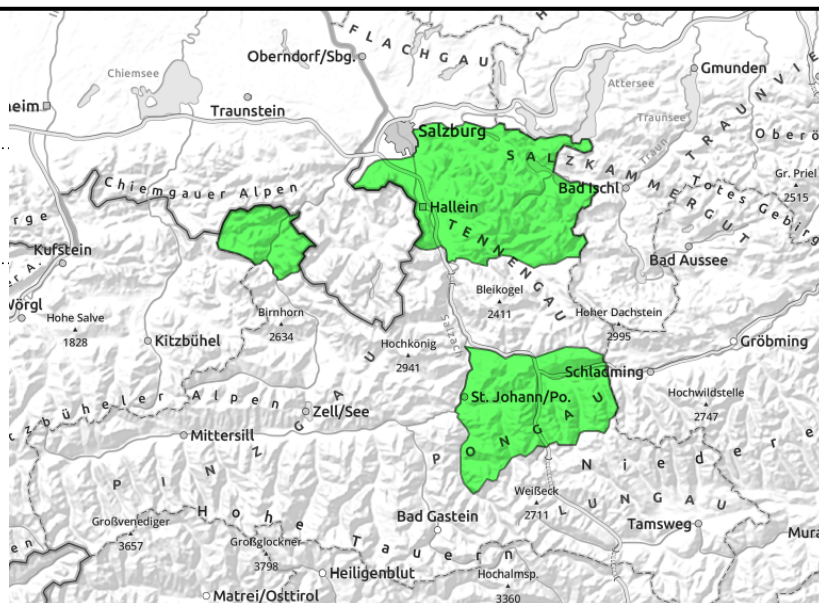
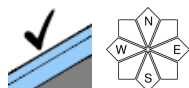


Expositions



27.03.2021

**Osterhorngruppe, Gamsfeldgruppe,
Untersbergstock, Chiemgauer Alpen, Heutal,
Reiteralpe, Pongauer Grasberge, Niedere Tauern
Nord**



Favourable situation

Hardly any avalanche prone locations. Possibly in extremely steep north-facing terrain, a slab might be triggered.

Isolated glide-snow avalanches are possible.

Snowpack structure

Stable snowpack with melt-freeze crusts of varying quality.

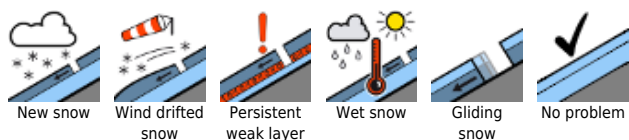
Weather

Clouds and fog will reduce visibility, some minor snowfall is possible. On the summits a bothersome westerly wind will be blowing. Temperatures will drop slightly during the daytime. At 2000 m: from +1 to -4 degrees.

Outlook

On Sunday, a slight daytime danger cycle.

Avalanche problems



Danger ratings



Expositions

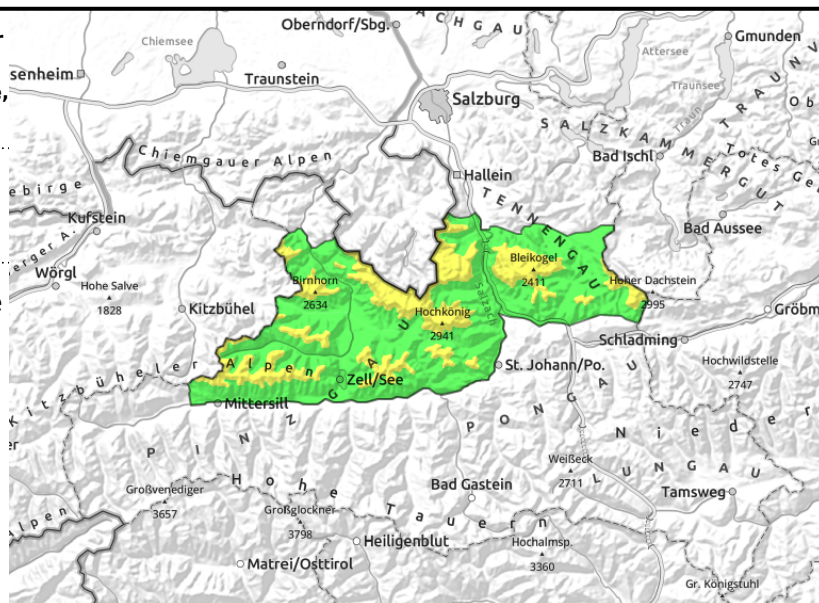


27.03.2021

Kitzbüheler Alpen, Glemmtal, Loferer und Leoganger Steinberge, Dientner Grasberge, Steinernes Meer, Hochkönig, Hagengebirge, Göllstock, Tennengebirge, Gosaukamm



north-facing slopes, triggerable at rims of snowdrift accumulations



Circumvent snowdrifts on north-facing slopes in extremely steep terrain

Starting at about 2100 m, esp. on north-facing slopes, isolated slab avalanches can still be triggered. Generally only in extremely steep terrain or by large additional loading. Naturally triggered avalanches, small-to-medium sized superficial wet-snow releases, are possible in extremely steep terrain (only isolated glide-snow avalanches anticipated), primarily at altitudes of 1600-2300 m.

Snowpack structure

The snowpack has settled well. Melt-freeze crusts often dominate.

Weather

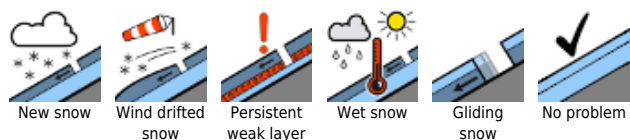
On Saturday, visibility often reduced due to clouds and fog, also minor snowfall is possible. Sunshine will be evident only occasionally. A brisk NW wind will be blowing. Temperatures will recede at all altitudes. At 2000 m: from +1 to -5 degrees; at 3000 m, from -6 to -11 degrees.

Outlook

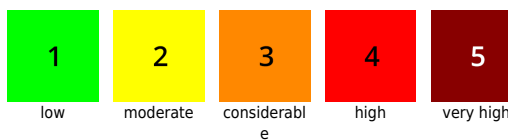
On Sunday, slight daytime danger cycle due to renewed sunshine.

Translated by Jeffrey McCabe, www.creativtrans.com

Avalanche problems



Danger ratings



Expositions

