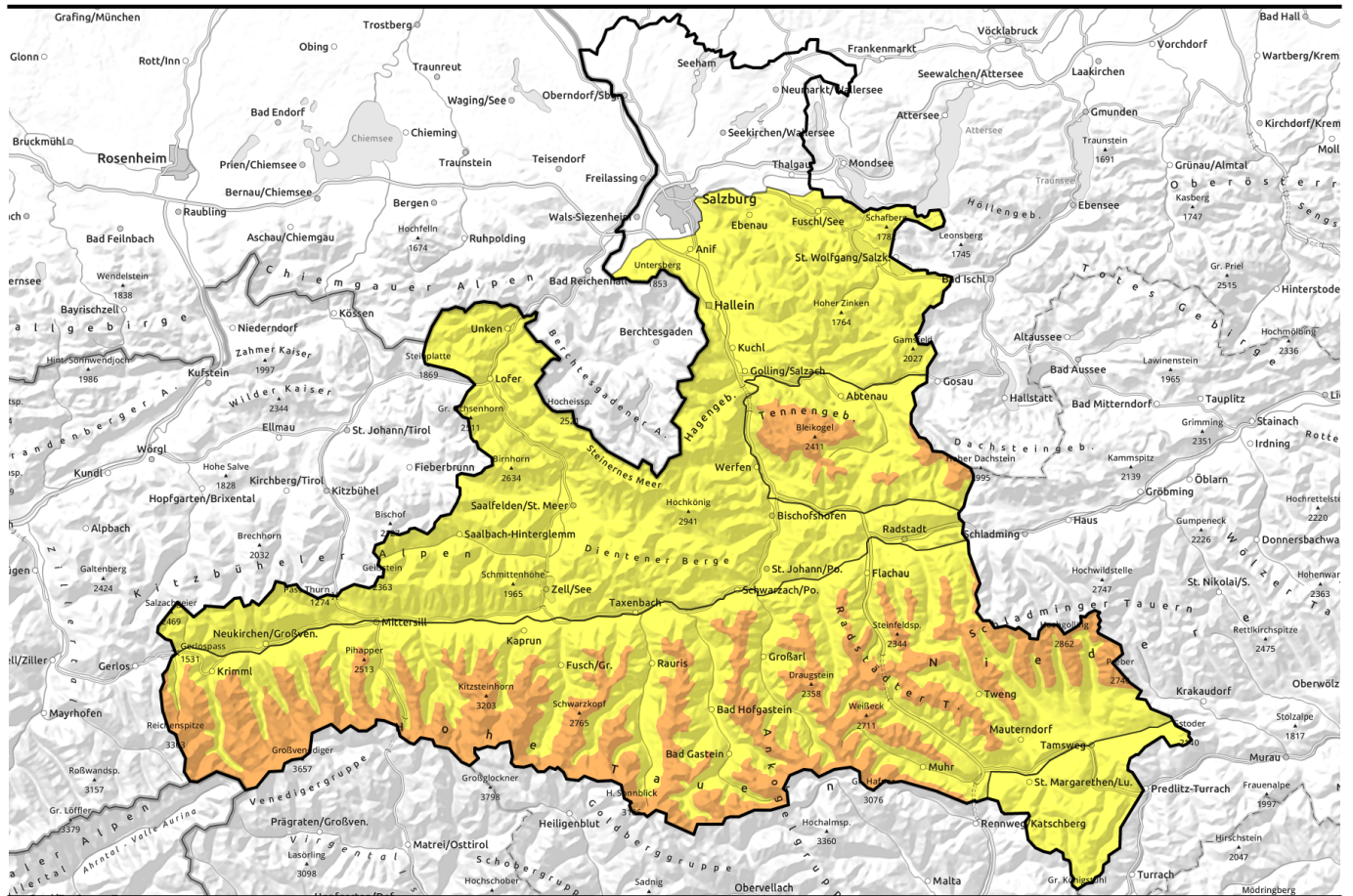


# 25.03.2021, morning



## Rapidly rising avalanche activity due to daytime warmth and solar radiation

	Untersbergstock, Chiemgauer Alpen, Heutal, Reiteralpe, Osterhorngruppe, Gamsfeldgruppe, Kitzbüheler Alpen, Glemmtal, Pongauer Grasberge, Dientner Grasberge, Oberpinzgauer Grasberge, Nockberge, Loferer und Leoganger Steinberge, Steinernes Meer, Hochkönig, Hagengebirge, Göllstock	
	2300 m Großvenedigergruppe Nord, Großvenedigergruppe Alpenhauptkamm, Glocknergruppe Nord, Goldberggruppe Alpenhauptkamm, Goldberggruppe Nord, Glocknergruppe Alpenhauptkamm, Niedere Tauern Nord, Niedere Tauern Süd, Niedere Tauern Alpenhauptkamm, Ankogelgruppe, Muhr	
	2000 m Tennengebirge, Gosaukamm	

### Avalanche problems



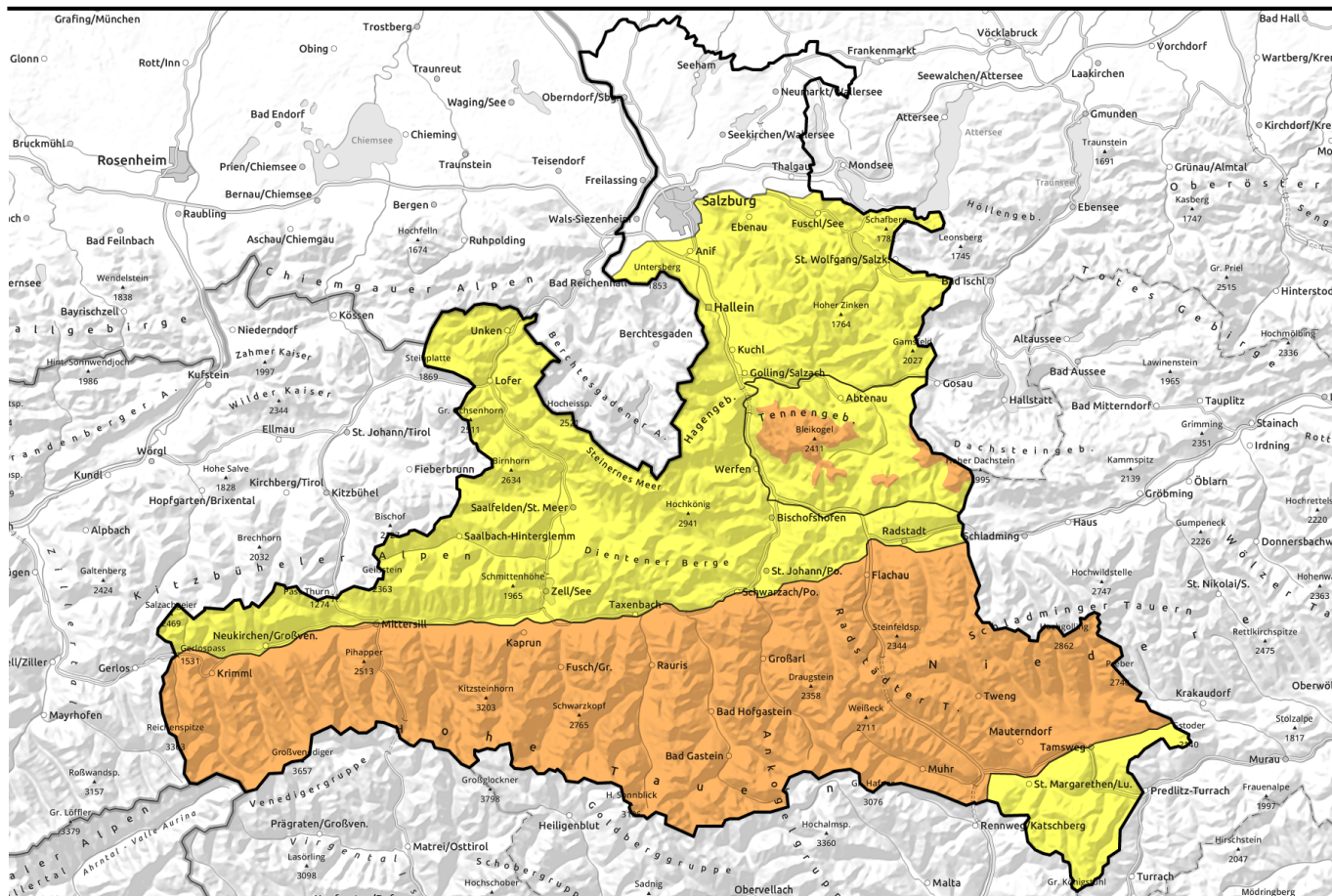
### Danger ratings



### Expositions



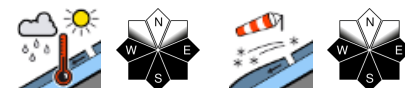
# 25.03.2021, afternoon



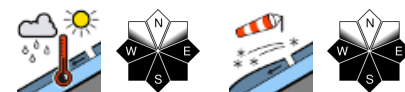
## Rascher Anstieg der Lawinenaktivität durch Wärme und Einstrahlung



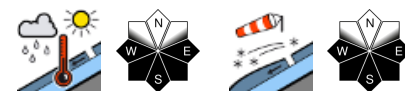
Untersbergstock, Chiemgauer Alpen, Heutal, Reitalpe, Osterhorngruppe, Gamsfeldgruppe, Kitzbüheler Alpen, Glemmtal, Pongauer Grasberge, Dientner Grasberge, Oberpinzgauer Grasberge, Nockberge, Loferer und Leoganger Steinberge, Steinernes Meer, Hochkönig, Hagengebirge, Göllstock



Großvenedigergruppe Nord, Großvenedigergruppe Alpenhauptkamm, Glocknergruppe Nord, Goldberggruppe Alpenhauptkamm, Goldberggruppe Nord, Glocknergruppe Alpenhauptkamm, Niedere Tauern Nord, Niedere Tauern Süd, Niedere Tauern Alpenhauptkamm, Ankogelgruppe, Muhr

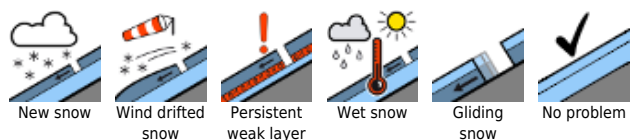


Tennengebirge, Gosaukamm

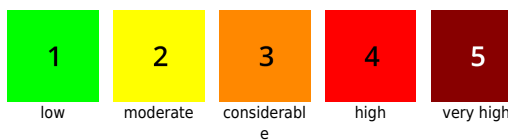


2000 m

### Avalanche problems



### Danger ratings

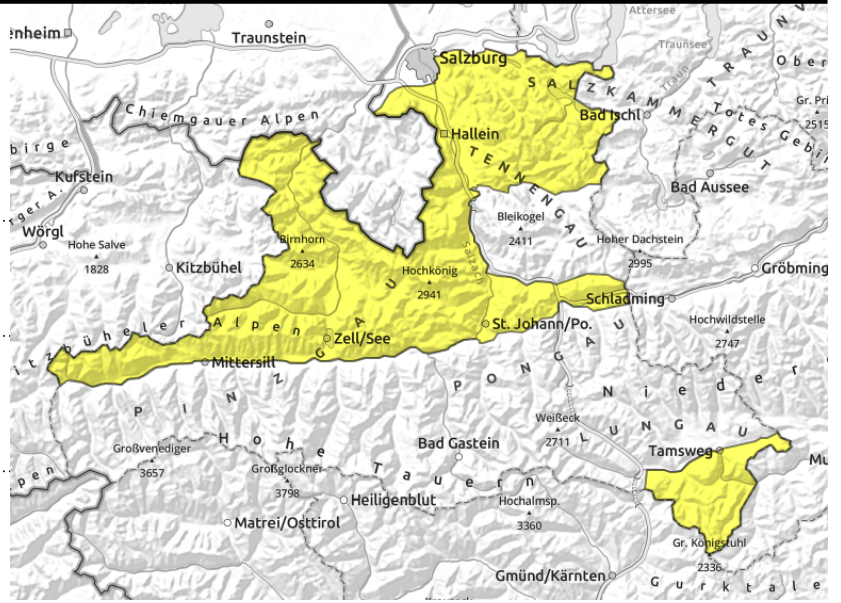


### Expositions



**25.03.2021**

**Untersbergstock, Chiemgauer Alpen, Heutal, Reiteralpe, Osterhorngruppe, Gamsfeldgruppe, Kitzbüheler Alpen, Glemmtal, Pongauer Grasberge, Dientner Grasberge, Oberpinzgauer Grasberge, Nockberge, Loferer und Leoganger Steinberge, Steinernes Meer, Hochkönig, Hagengebirge, Göllstock**



daytime cycle of naturally triggered avalanche activity below 2200 m



near to ridges, above 2000 m, in transitions to wind-loaded zones and in gullies

## Loss of snowpack firmness on sunny slopes and snowdrift problem at high altitudes

**Wet-snow problem:** Conditions in early morning at low and intermediate altitudes are generally favourable. As a result of daytime warming and solar radiation, avalanche danger below 2200 m increases to MODERATE during the morning. On sun-drenched steep slopes, some medium, in isolated cases also large-sized loose-snow and slab avalanches are then possible.

**Snowdrift problem:** with ascending altitude (above 2200 m), older snowdrift accumulations are triggerable primarily by large additional loading, in isolated cases also large-sized slab avalanches. Most danger zones are near ridgelines in E-S-W aspects in very steep terrain, but also behind protruberances distant from ridgelines.

### Snowpack structure

The fresh snow and drifts from last week have settled significantly under the influence of milder temperatures and high solar radiation. Snowdrift masses generated by intermittently stormy N/NW winds have gained in firmness but are still prone to triggering in high altitudes due to the loosely-packed base beneath them. On steep south-facing slopes below 2200 m, the melt-freeze crusts are often breakable. Strong daytime warming is leading to the snowpack losing superficial firmness during the morning.

### Weather

On **Thursday**, very favourable mountain weather. Mild and dry, mostly sunshine, only a few cirrus clouds. Solar radiation will be high- Visibility in the afternoon will be slightly diffuse, but still outstanding. Towards evening the cloud cover will become denser. At 2000 m at midday: 0 degrees in the Northern Alps and +2 degrees in Upper Pinzgau and Nockberge; at 3000 m, -7 degrees.

On **Friday**, nocturnal cloudbanks will pass through, but unperturbed sunshine is often expected. Strong daytime warming, little wind.

### Outlook

On Friday, little change, swift daytime increase in naturally triggered avalanche activity below 2500 m

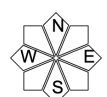
#### Avalanche problems



#### Danger ratings

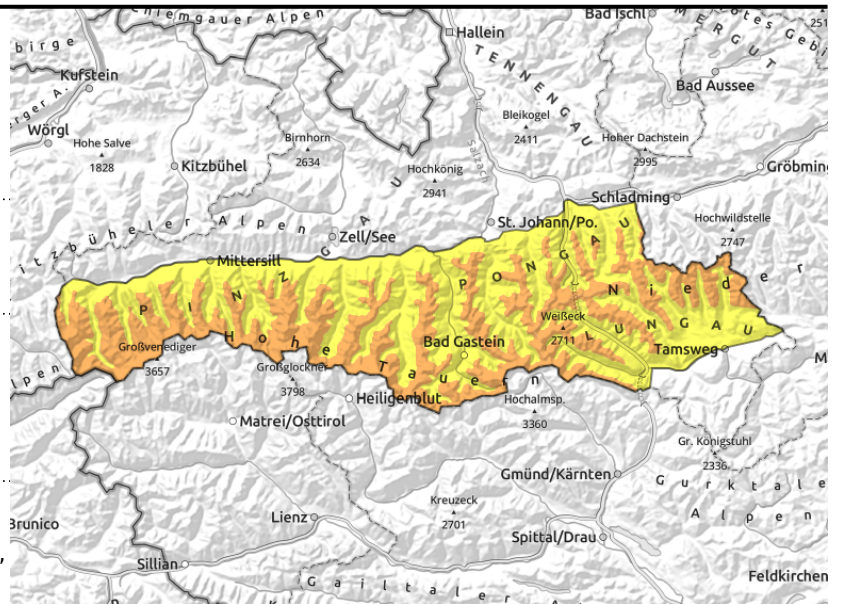


#### Expositions



# 25.03.2021, morning

**Großvenedigergruppe Nord, Großvenedigergruppe Alpenhauptkamm, Glocknergruppe Nord, Goldberggruppe Alpenhauptkamm, Goldberggruppe Nord, Glocknergruppe Alpenhauptkamm, Niedere Tauern Nord, Niedere Tauern Süd, Niedere Tauern Alpenhauptkamm, Ankogelgruppe, Muhr**



daytime cycle of naturally triggered avalanche activity, strong warming impulse below 2500 m



near ridges, behind protruberances, above 2300 m, esp. triggerable at snowdrift rims

## Sunny-slope loss of firmness and snowdrift problem at high altitudes

**Wet-snow problem:** Conditions in early morning at low and intermediate altitudes are generally favourable. As a result of daytime warming and solar radiation, avalanche danger below 2200 m increases to MODERATE during the morning. On sun-drenched steep slopes, some medium, in isolated cases also large-sized loose-snow and slab avalanches are then possible.

**Snowdrift problem:** with ascending altitude (above 2200 m), older snowdrift accumulations are triggerable primarily by large additional loading, in isolated cases also large-sized slab avalanches. Most danger zones are near ridgelines in E-S-W aspects in very steep terrain, but also behind protruberances distant from ridgelines.

### Snowpack structure

The fresh snow and drifts from last week have settled significantly under the influence of milder temperatures and high solar radiation. Snowdrift masses generated by intermittently stormy N/NW winds have gained in firmness but are still prone to triggering in high altitudes due to the loosely-packed base beneath them. On steep south-facing slopes below 2200 m, the melt-freeze crusts are often breakable. Strong daytime warming is leading to the snowpack losing superficial firmness during the morning.

### Weather

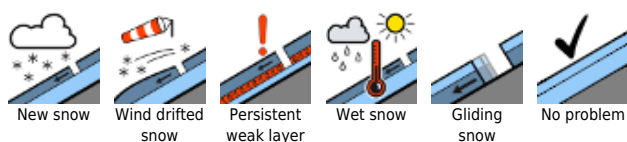
On **Thursday**, very favourable mountain weather. Mild and dry, mostly sunshine, only a few cirrus clouds. Solar radiation will be high- Visiblity in the afternoon will be slightly diffuse, but still outstanding. Towards evening the cloud cover will become denser. At 2000 m at midday: 0 degrees in the Northern Alps and +2 degrees in Upper Pinzgau and Nockberge; at 3000 m, -7 degrees.

On **Friday**, nocturnal cloudbanks will pass through, but unperturbed sunshine is often expected. Strong daytime warming, little wind.

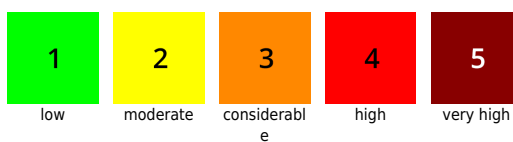
### Outlook

On Friday, little change, swift daytime increase in naturally triggered avalanche activity below 2500 m. In high alpine regions, small fresh snowdrifts on north-facing slopes.

#### Avalanche problems



#### Danger ratings

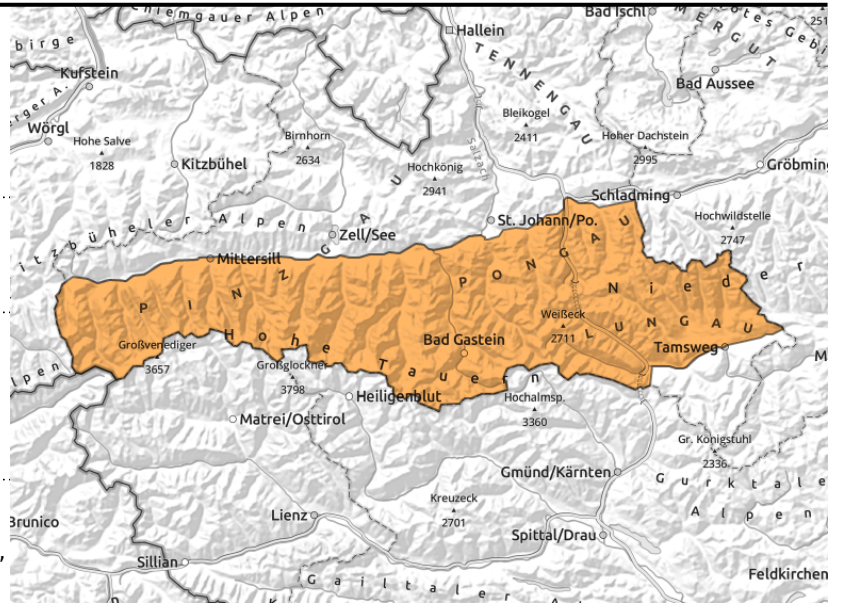


#### Expositions



# 25.03.2021, afternoon

Großvenedigergruppe Nord, Großvenedigergruppe Alpenhauptkamm, Glocknergruppe Nord, Goldberggruppe Alpenhauptkamm, Goldberggruppe Nord, Glocknergruppe Alpenhauptkamm, Niedere Tauern Nord, Niedere Tauern Süd, Niedere Tauern Alpenhauptkamm, Ankogelgruppe, Muhr



daytime cycle of naturally triggered avalanche activity, strong warming impulse below 2500 m



near ridges, behind protruberances, above 2300 m, esp. triggerable at snowdrift rims

## Sunny-slope loss of firmness and snowdrift problem at high altitudes

**Wet-snow problem:** Conditions in early morning at low and intermediate altitudes are generally favourable. As a result of daytime warming and solar radiation, avalanche danger below 2200 m increases to MODERATE during the morning. On sun-drenched steep slopes, some medium, in isolated cases also large-sized loose-snow and slab avalanches are then possible.

**Snowdrift problem:** with ascending altitude (above 2200 m), older snowdrift accumulations are triggerable primarily by large additional loading, in isolated cases also large-sized slab avalanches. Most danger zones are near ridgelines in E-S-W aspects in very steep terrain, but also behind protruberances distant from ridgelines.

### Snowpack structure

The fresh snow and drifts from last week have settled significantly under the influence of milder temperatures and high solar radiation. Snowdrift masses generated by intermittently stormy N/NW winds have gained in firmness but are still prone to triggering in high altitudes due to the loosely-packed base beneath them. On steep south-facing slopes below 2200 m, the melt-freeze crusts are often breakable. Strong daytime warming is leading to the snowpack losing superficial firmness during the morning.

### Weather

On **Thursday**, very favourable mountain weather. Mild and dry, mostly sunshine, only a few cirrus clouds. Solar radiation will be high- Visiblity in the afternoon will be slightly diffuse, but still outstanding. Towards evening the cloud cover will become denser. At 2000 m at midday: 0 degrees in the Northern Alps and +2 degrees in Upper Pinzgau and Nockberge; at 3000 m, -7 degrees.

On **Friday**, nocturnal cloudbanks will pass through, but unperturbed sunshine is often expected. Strong daytime warming, little wind.

### Outlook

On Friday, little change, swift daytime increase in naturally triggered avalanche activity below 2500 m. In high alpine regions, small fresh snowdrifts on north-facing slopes.

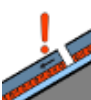
#### Avalanche problems



New snow



Wind drifted snow



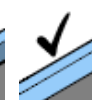
Persistent weak layer



Wet snow

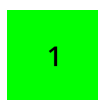


Gliding snow



No problem

#### Danger ratings



1

low



2

moderate



3

considerabl

e



4

high



5

very high



#### Expositions





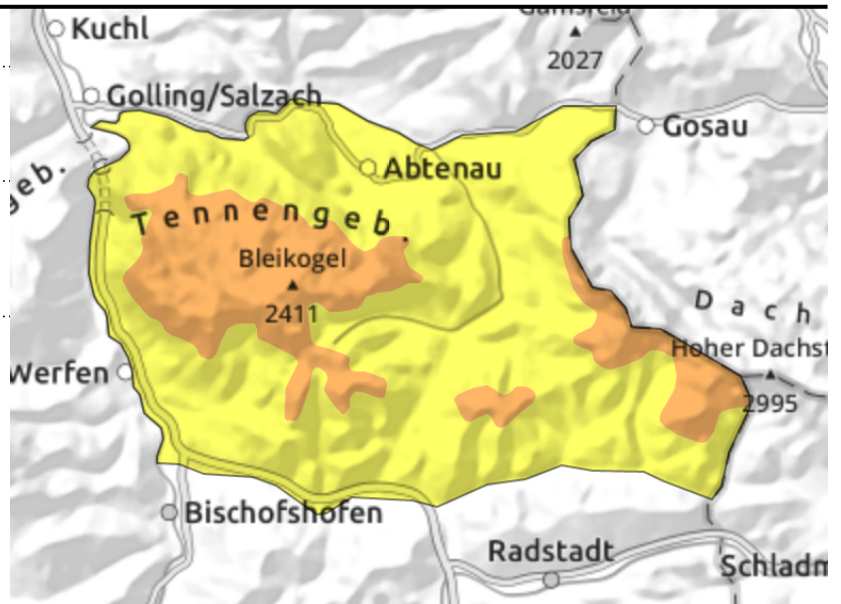
**25.03.2021**

**Tennengebirge, Gosaukamm**



  daytime cycle of naturally triggered avalanche activity below 2000 m

  near ridges, behind protruberances, in gullies, steep bowls



**Wet-snow problem at intermediate altitudes. Snowdrift problem at high altitudes.**

**Wet-snow problem:** Conditions in early morning at low and intermediate altitudes are generally favourable. As a result of daytime warming and solar radiation, avalanche danger below 2200 m increases to MODERATE during the morning. On sun-drenched steep slopes, some medium, in isolated cases also large-sized loose-snow and slab avalanches are then possible.

**Snowdrift problem:** with ascending altitude (above 2200 m), older snowdrift accumulations are triggerable primarily by large additional loading, in isolated cases also large-sized slab avalanches. Most danger zones are near ridgelines in E-S-W aspects in very steep terrain, but also behind protruberances distant from ridgelines.

**Snowpack structure**

The fresh snow and drifts from last week have settled significantly under the influence of milder temperatures and high solar radiation. Snowdrift masses generated by intermittently stormy N/NW winds have gained in firmness but are still prone to triggering in high altitudes due to the loosely-packed base beneath them. On steep south-facing slopes below 2200 m, the melt-freeze crusts are often breakable. Strong daytime warming is leading to the snowpack losing its firmness during the morning.

**Weather**

On **Thursday**, very favourable mountain weather. Mild and dry, mostly sunshine, only a few cirrus clouds. Solar radiation will be high- Visiblity in the afternoon will be slightly diffuse, but still outstanding. Towards evening the cloud cover will become denser. At 2000 m at midday: 0 degrees in the Northern Alps and +2 degrees in Upper Pinzgau and Nockberge; at 3000 m, -7 degrees.

On **Friday**, nocturnal cloudbanks will pass through, but unperturbed sunshine is often expected. Strong daytime warming, little wind.

**Outlook**

On Friday, little change, swift daytime increase in naturally triggered avalanche activity below 2500 m.

**Avalanche problems**



**Danger ratings**



**Expositions**



**25.03.2021**

Translated by Jeffrey McCabe, [www.creativtrans.com](http://www.creativtrans.com)

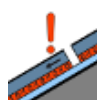
**Avalanche problems**



New snow



Wind drifted  
snow



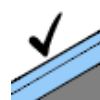
Persistent  
weak layer



Wet snow



Gliding  
snow



No problem

**Danger ratings**



1

low



2

moderate



3

considerabl  
e



4

high



5

very high

**Expositions**

