

Marked snowdrift accumulation above the timberline

	1400 m	Osterhorngruppe, Gamsfeldgruppe, Untersbergstock				
		Steinernes Meer, Hochkönig, Hagengebirge, Göllstock, Tennengebirge, Gosaukamm				
	1500 m	Chiemgauer Alpen, Heutal, Reiteralpe, Loferer und Leoganger Steinberge, Kitzbüheler Alpen, Glemmtal, Dientner Grasberge, Pongauer Grasberge, Niedere Tauern Nord, Goldberggruppe Nord, Glocknergruppe Nord, Großvenedigergruppe Nord, Oberpinzgauer Grasberge				
		Großvenedigergruppe Alpenhauptkamm, Glocknergruppe Alpenhauptkamm, Goldberggruppe Alpenhauptkamm, Niedere Tauern Alpenhauptkamm, Niedere Tauern Süd, Ankogelgruppe, Muhr				
	1800 m	Nockberge				

Avalanche problems



Danger ratings



Expositions



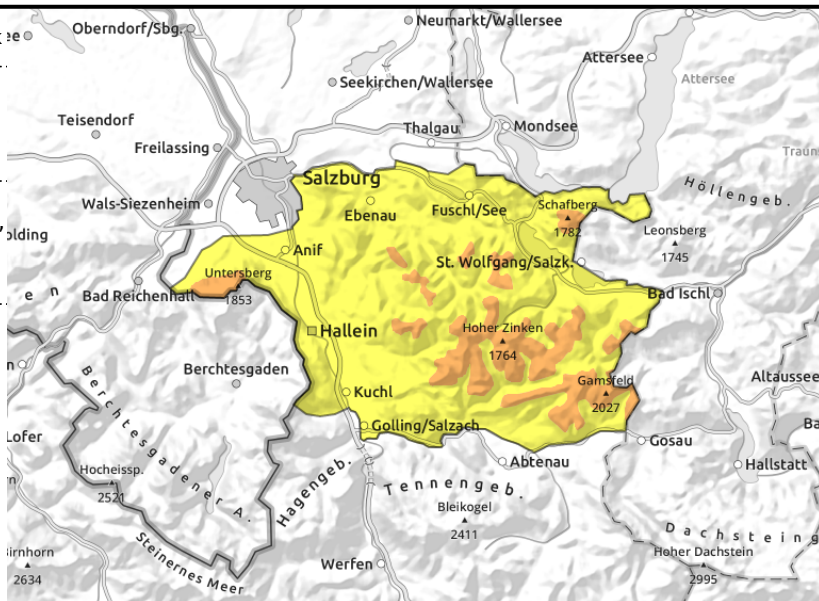
23.03.2021

Osterhorngruppe, Gamsfeldgruppe, Untersbergstock



near to and distant from ridges, also at forest rims

increasing glide-snow activity



Avoid snowdrift accumulations in steep outlying terrain!

Avalanche danger above 1400 m is still **CONSIDERABLE**. **Triggering the latest snowdrifts** even by the weight of one single skier is possible on many steep slopes. This applies to steep south-facing and W-S-E-NE facing slopes as well as gullies in all aspects, terrain near to and distant from ridgelines, in wind-exposed terrain also in forest rimline areas.

In extremely steep slopes, isolated **glide-snow avalanches** are possible on grass-covered slopes which were previously bare of snow. These can grow to medium size.

Snowpack structure

On Monday many wide-ranging snowdrift accumulations were deposited. These compact layers were often deposited atop soft layers and are still prone to triggering. Daytime warming will lend an increased impulse to the snowpack. The heavy snowfall of the last few days is relatively homogenous and stable.

Weather

On **Tuesday**, poor visibility will persist. Occasional light snowfall, not much snow will fall. In the afternoon, some sunshine, winds will gradually ease, in exposed areas blowing at 30 km/hr from the northwest. At 1500 m: -5 degrees; at 2000 m: -8 degrees.

On **Wednesday**, rather sunny. Temperatures will rise.

Outlook

Through daytime warming the snowdrift situation will recede, but glide-snow activity will increase slightly. All in all, avalanche danger will decrease another notch.

Avalanche problems



Danger ratings



Expositions



23.03.2021

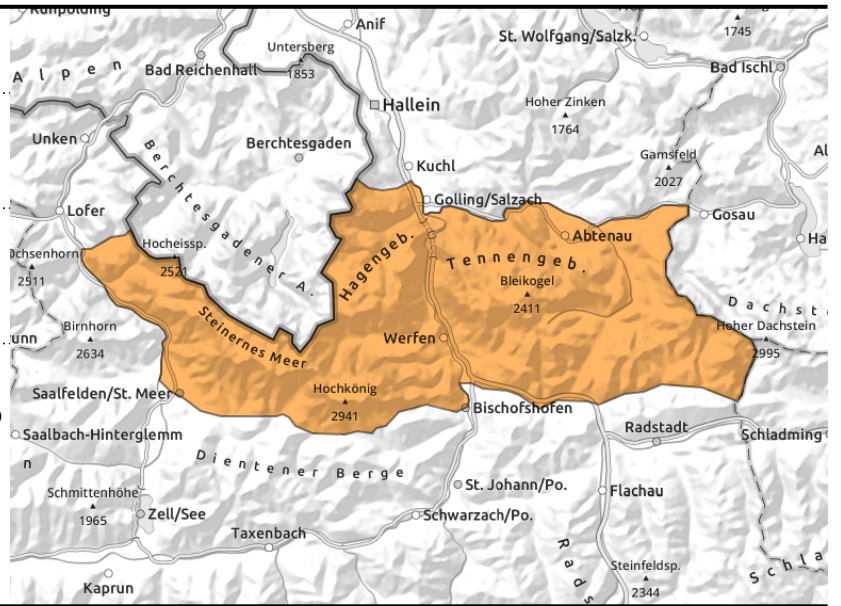
Steinernes Meer, Hochkönig, Hagengebirge, Göllstock, Tennengebirge, Gosaukamm



near to and distant from ridgelines, also at forest rims, easily triggered



glide-snow and loose-snow avalanches on extremely steep slopes



Avoid steep terrain! Heed danger of naturally triggered avalanches.

Avalanche danger is **CONSIDERABLE**.

Main problem: **Monday's snowdrifts** which can be triggered even by the weight of one single skier with ascending altitude on numerous steep slopes. This applies to steep slopes in nearly all aspects, particularly in extended south-facing terrain (W-S-E) and in gullies, both near to and distant from ridgelines, and at forest rims.

Naturally triggered avalanche activity in extremely steep terrain is being stimulated by the settling impulses. On heavily wind-loaded south and east-facing slopes, isolated dry-snow slab avalanches can release; on slopes which were bare prior to the recent snowfall, isolated glide-snow avalanches are possible; loose-snow avalanches are possible in steep rocky terrain. Avalanches can grow to medium size, in isolated cases also to large size.

Snowpack structure

Monday brought an additional 30-50 cm of fresh snow and wide-ranging snowdrift accumulations above the treeline. The compact, bonded snowdrifts are often deposited atop soft layers and are still prone to triggering. Daytime warming generates an additional impulse in the snowpack. The heavy snowfall of the last few days is nonetheless homogenous and largely stable.

Weather

On Tuesday, poor visibility will persist. Occasional light snowfall, without much snow. In the afternoon, a bit of sunshine. Winds will slacken off significantly, blowing at 30 km/hr in exposed terrain from the northwest. At 2000 m: -8 degrees; at 3000 m: -10 degrees.

On Wednesday, rather sunny. Temperatures will rise further.

Outlook

Through the daytime warming the snowdrift situation will recede further, but glide-snow activity will increase, along with loose-snow avalanches in rocky terrain. All in all, avalanche danger will recede another notch.

Avalanche problems



New snow



Wind drifted snow



Persistent weak layer



Wet snow



Gliding snow



No problem

Danger ratings



1

low



2

moderate



3

considerable



4

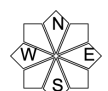
high



5

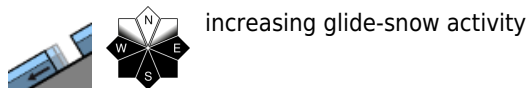
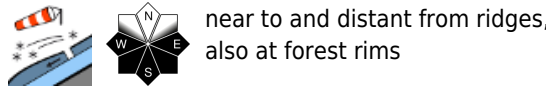
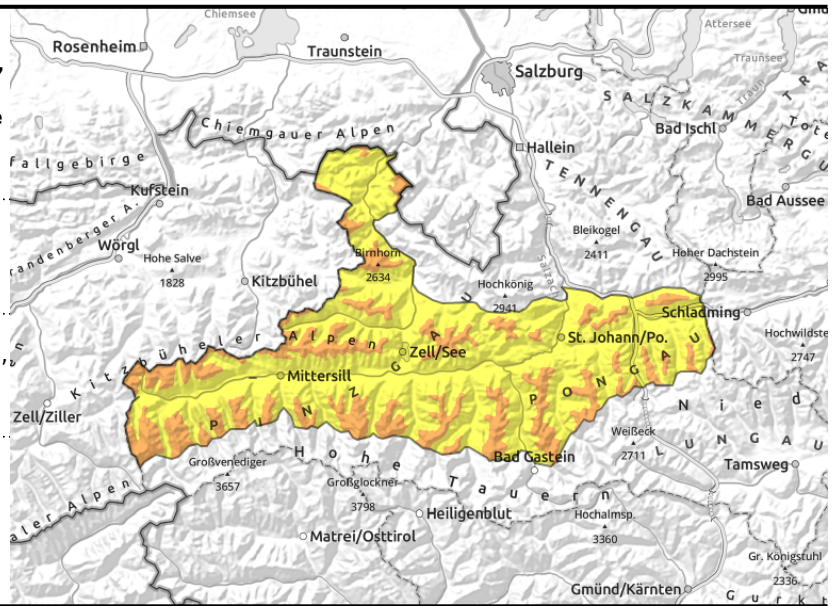
very high

Expositions



23.03.2021

Chiemgauer Alpen, Heutal, Reiteralpe, Loferer und Leoganger Steinberge, Kitzbüheler Alpen, Glemmtal, Dientner Grasberge, Pongauer Grasberge, Niedere Tauern Nord, Goldberggruppe Nord, Glocknergruppe Nord, Großvenedigergruppe Nord, Oberpinzgauer Grasberge



Easily triggered snowdrifts between treeline and summits

Avalanche danger above 1500 m is **CONSIDERABLE**. On some steep slopes above the treeline **the latest snowdrifts can be triggered** by the weight of one single skier, particularly on steep extended south-facing slopes (W-S-E) in terrain near to and distant from ridgelines. In starkly wind-exposed zones also at forest rims.

On extremely steep slopes, isolated **glide-snow avalanches** are possible on terrain which was bare prior to recent snowfall, possibly growing to medium size.

Snowpack structure

On Monday many wide-ranging snowdrift accumulations were deposited. These compact layers were often deposited atop soft layers and are still prone to triggering. Daytime warming will lend an increased impulse to the snowpack. The heavy snowfall of the last few days is relatively homogenous and stable.

Weather

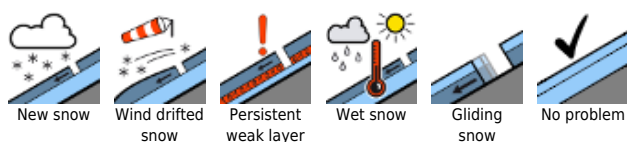
On Tuesday, poor visibility will persist. Occasional light snowfall, not much snow will fall. In the afternoon, some sunshine, winds will gradually ease, in exposed areas blowing at 30 km/hr from the northwest. At 1500 m: -5 degrees; at 2000 m: -8 degrees; at 3000 m, -10 degrees.

On Wednesday, rather sunny. Temperatures will rise further.

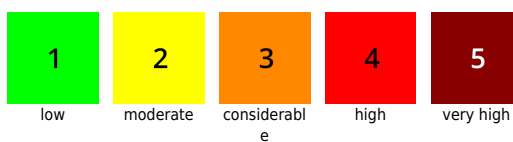
Outlook

Through daytime warming the snowdrift situation will recede, but the glide-snow activity will increase slightly. All in all, avalanche danger will decrease another notch.

Avalanche problems



Danger ratings



Expositions



23.03.2021

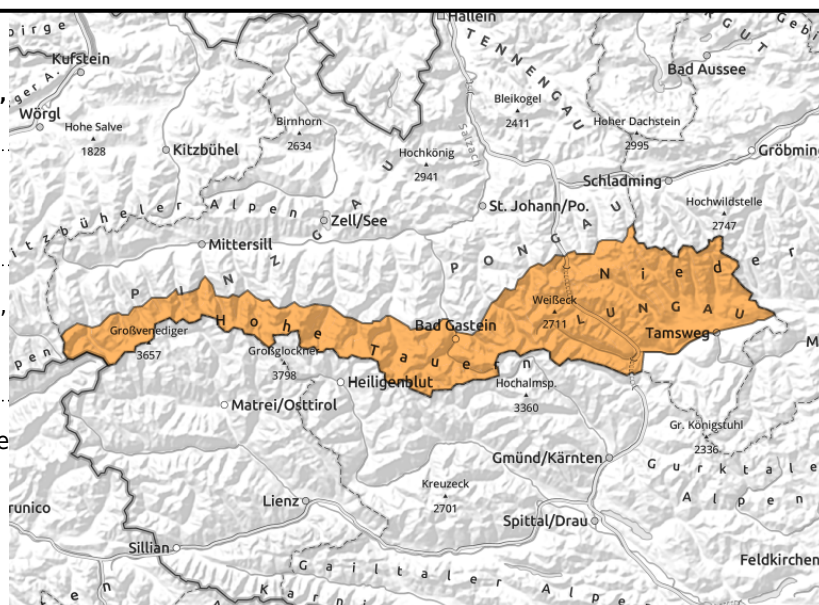
Großvenedigergruppe Alpenhauptkamm, Glocknergruppe Alpenhauptkamm, Goldberggruppe Alpenhauptkamm, Niedere Tauern Alpenhauptkamm, Niedere Tauern Süd, Ankogelgruppe, Muhr



near to and distant from ridges, easily triggered, wide-ranging in wind-exposed zones



where steep grassy slopes were bare two weeks ago



Wide-ranging snowdrifts in the wind-exposed zones

Avalanche danger is **CONSIDERABLE**, even below the treeline.

Triggering a slab avalanche is possible in very steep terrain near to and distant from ridgelines even by minimum additional loading. In wind-exposed zones (Lungau Tauern valleys) there are wide-ranging snowdrift accumulations also below the treeline and in the high valleys, mostly in W-S-E aspects and in steep gullies. Potential slab avalanches are medium-sized, in isolated cases large-sized.

In starkly wind-loaded zones **isolated naturally triggered avalanches** (slab) are possible. Isolated glide-snow avalanches are also possible on slopes which were bare of snow prior to the recent snowfall.

Snowpack structure

Monday brought an additional 20-40 cm of fresh snow accompanied by storm strength winds and thus, wide-ranging snowdrift accumulations were generated. In the storm-wind lanes the hard old snow was windblown, exposed summits were also windblown. Wide-ranging snowdrifts are found in gullies, in forests distant from ridges and far removed from leeward slopes. The bonded and compact snowdrifts were often deposited atop soft layers and are still prone to triggering. Daytime warming adds an additional impulse to the settling snowpack.

Weather

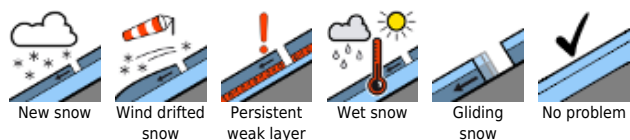
On **Tuesday**, poor visibility will persist. Occasional light snowfall, not much snow will fall. In the afternoon, some sunshine, winds will gradually ease, in exposed areas blowing at 30 km/hr from the northwest. At 2000 m: -8 degrees; at 3000 m, -10 degrees.

On **Wednesday**, rather sunny. Temperatures will rise further.

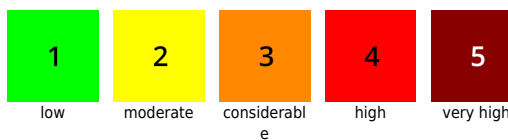
Outlook

Through daytime warming the snowdrift situation will recede, but the glide-snow activity will increase slightly. All in all, avalanche danger will decrease another notch.

Avalanche problems



Danger ratings





Expositions

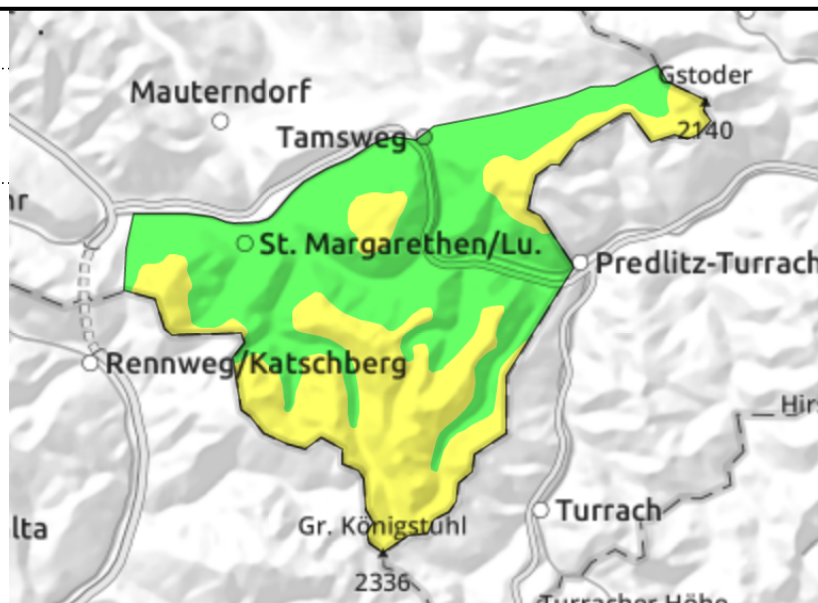


23.03.2021

Nockberge



  in gullies, leeward slopes, directly adjacent to hardened surfaces



Attention: fresh snowdrifts in gullies and steep leeward terrain

Avalanche danger above 1800 m is **CONSIDERABLE**, below that altitude danger is **LOW**. Triggering a slab avalanche is possible **primarily by large additional loading**, mostly in W-S-E aspects near to and distant from ridgelines and in steep gullies and **leeward terrain** in W-S-E aspects. Potential slab avalanches are small-to-medium sized. Avalanche prone locations lie directly adjacent to windblown, hard surfaces and are easy to recognize.

Snowpack structure

There was average 20 cm of dry fresh snow in recent days. Above the treeline there are fresh, generally compact snowdrift masses in gullies and on some leeward slopes. Elsewhere the terrain is windblown and hard. The old snowpack beneath is generally stable.

Weather

On **Tuesday** the summits will be free. In the morning hours clouds will pass through, in the afternoon sunshine is expected. North winds will slacken off significantly, reach only 30 km/hr, in the upper zones 40 km/hr. Temperatures will rise: at 2000 m, -7 degrees; at 2500 m, -8 degrees. On **Wednesday**, rather sunny. Temperatures will rise.

Outlook

All in all, avalanche danger will decrease another notch in the next few days.

Translated by Jeffrey McCabe, www.creativtrans.com

Avalanche problems



Danger ratings



Expositions

