

Caution: shifting winds creating instable snowdrifts

	<p>1600 m Osterhorngruppe, Gamsfeldgruppe, Untersbergstock, Steinernes Meer, Hochkönig, Hagengebirge, Göllstock, Chiemgauer Alpen, Heutal, Reiteralpe, Loferer und Leoganger Steinberge, Kitzbüheler Alpen, Glemmtal, Oberpinzgauer Grasberge, Dientner Grasberge, Tennengebirge, Gosaukamm, Pongauer Grasberge, Niedere Tauern Nord, Goldberggruppe Nord, Glocknergruppe Nord, Großvenedigergruppe Nord</p>	
	<p>Großvenedigergruppe Alpenhauptkamm, Glocknergruppe Alpenhauptkamm, Goldberggruppe Alpenhauptkamm, Niedere Tauern Alpenhauptkamm, Niedere Tauern Süd, Ankogelgruppe, Muhr</p>	
	<p>1800 m Nockberge</p>	

Avalanche problems



Danger ratings

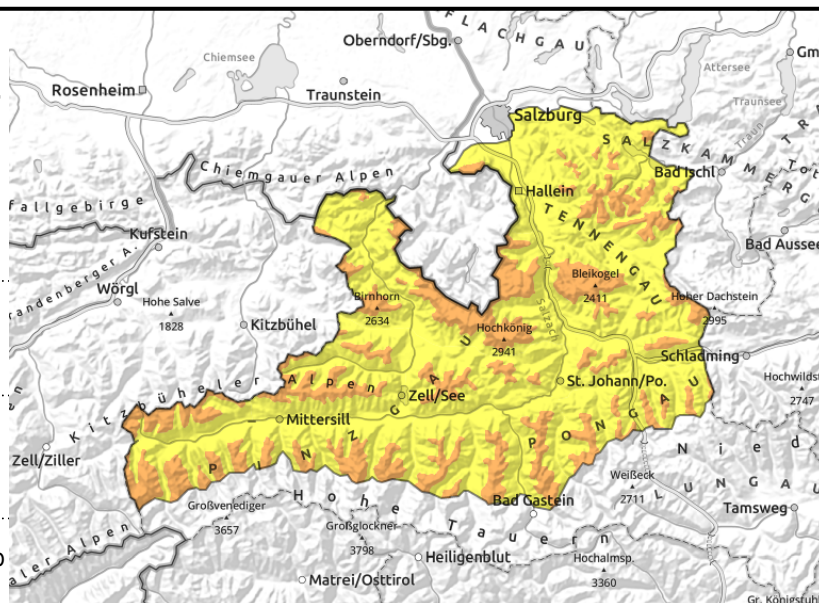


Expositions



21.03.2021

Osterhorngruppe, Gamsfeldgruppe, Untersbergstock, Steinernes Meer, Hochkönig, Hagengebirge, Göllstock, Chiemgauer Alpen, Heutal, Reiteralpe, Loferer und Leoganger Steinberge, Kitzbüheler Alpen, Glemmtal, Oberpinzgauer Grasberge, Dientner Grasberge, Tennengebirge, Gosaukamm, Pongauer Grasberge, Niedere Tauern Nord, Goldberggruppe Nord, Glocknergruppe Nord, Großvenedigergruppe Nord



1600 m



freshly drifted masses, near to and distant from ridges



loose-snow avalanches in steep rocky terrain (from settling impulses), increasing glide-snow

Avoid steep wind-loaded slopes in outlying terrain

Avalanche danger **above 1600m is CONSIDERABLE due to fresh snowdrifts**, below that altitude danger is MODERATE (due to naturally triggered glide-snow and loose-snow avalanches). Above the treeline, defensive conduct and careful tracking are important in backcountry.

Slab avalanches can be triggered in very steep ridgeline terrain **even by the weight of one single skier**. This applies to ridges and, in wind-exposed zones, also steep slopes distant from ridgelines in W-S-E aspects, as well as steep gullies. Potential slab avalanches are medium-sized. On extremely steep and rocky slopes, naturally triggered small-to-medium sized avalanches are possible (**loose-snow avalanches** with powder cloud). Isolated **glide-snow avalanches** are also possible on grass-covered slopes which were bare before the recent snowfall.

Snowpack structure

Intensifying winds on Sunday will immediately transport the latest fresh snow (15-30 cm on Fri-Sat). In the wind-exposed zones, even the fresh snow from the previous day will be swept up. Fresh snowdrifts will be deposited atop loosely-packed snow or atop a thin layer of surface hoar. The heavy snow of recent days forms a homogenous layer in the interim. Bonding to the base is generally good. In isolated cases there were fractures at the borderline to the old snow, particularly on steep south and southeast-facing slopes above 2200 m.

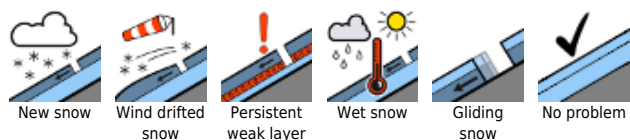
Weather

During the course of the morning, heavy cloud cover will move in, the light will become diffuse, the peaks will mostly remain free. Starting at midday, light snowfall will set in. **Above the treeline, NW winds will intensify (40 km/hr)**. Temperatures will **rise** by 5-8 degrees: at 2000 m: -10 degrees; at 3000 m: -13 degrees.

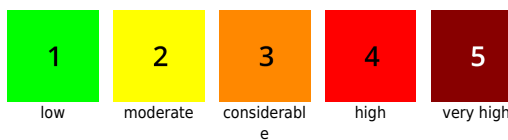
On **Monday**, variable conditions will continue with lots of clouds, some sunshine and a few snow showers. Above the treeline, strong-to-**stormy northerly winds** will be blowing. At 2000 m: -11 degrees; at 3000 m: -17 degrees.

Fresh snow between Sunday afternoon and Monday afternoon: 15 to 30 cm, depending on altitude.

Avalanche problems



Danger ratings



Expositions

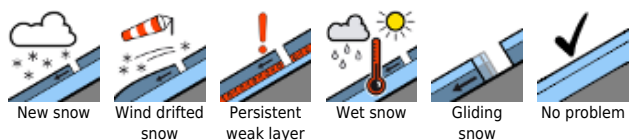


21.03.2021

Outlook

On **Monday** as a result of fresh snow and storm-strength winds, there will be more avalanche prone locations. The **snowdrift situation will reach a new climax**. CONSIDERABLE avalanche danger widespread above the treeline.

Avalanche problems



Danger ratings



Expositions

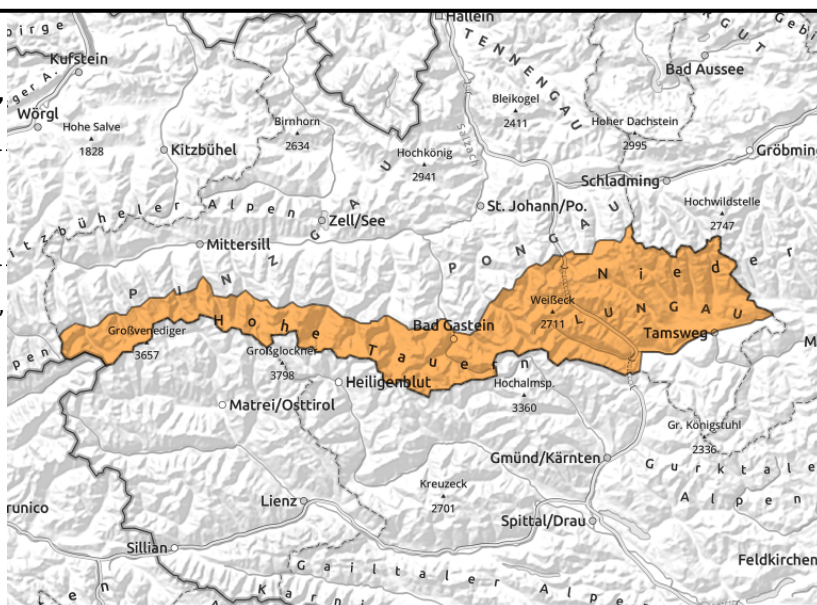


21.03.2021

Großvenedigergruppe Alpenhauptkamm,
Glocknergruppe Alpenhauptkamm, Goldberggruppe
Alpenhauptkamm, Niedere Tauern Alpenhauptkamm,
Niedere Tauern Süd, Ankogelgruppe, Muhr



near to and distant from ridges,
easily triggered, wide-ranging
in wind-exposed zones



Wide-ranging snowdrifts generating in wind-exposed zones

Avalanche danger is **CONSIDERABLE** widespread due to fresh snowdrifts, also below the treeline. Defensive conduct and careful tracking are imperative in outlying terrain. Triggering a slab avalanches in very steep terrain near to and distant from ridgelines is possible **even by the weight of one single skier**. In the **wind-exposed zones (Lungau Tauern valleys) wide-ranging snowdrift accumulations will be generated, extending to below the treeline** and in the high-altitude valleys. This applies to slopes in W-S-E aspects as well as steep gullies. Potential slab avalanches are medium-to-large sized.

On extremely steep and rocky slopes, naturally triggered small-to-medium sized avalanches are possible (loose-snow and slab avalanches). Isolated glide-snow avalanches are also possible on grass-covered slopes where were bare before the recent snowfall.

Snowpack structure

Intensifying winds on Sunday will immediately transport the latest fresh snow (15-30 cm on Fri-Sat). In the wind-exposed zones, even the fresh snow from the previous day will be swept up. Fresh snowdrifts will be deposited atop loosely-packed snow or atop a thin layer of surface hoar. The heavy snow of recent days forms a homogenous layer in the interim. Bonding to the base is generally good. In isolated cases there were fractures at the line to the old snow, particularly on steep south and south-facing slopes above 2200 m.

Weather

During the course of the morning, heavy cloud cover will move in, the light will become diffuse, the peaks will mostly remain free. Starting at midday, light snowfall will set in. Above the treeline, NW winds will intensify (50-70 km/hr). Temperatures will rise by 5-8 degrees: at 2000 m: -10 degrees; at 3000 m: -13 degrees.

On Monday, the variably conditions will continue with lots of clouds, some sunshine and a few snow showers. Above the treeline, strong-to-stormy northerly winds will be blowing. At 2000 m: -11 degrees; at 3000 m: -17 degrees.

Fresh snow between Sunday afternoon and Monday afternoon: 15 to 30 cm, depending on altitude.

Avalanche problems



New snow



Wind drifted snow



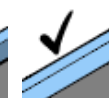
Persistent weak layer



Wet snow



Gliding snow



No problem

Danger ratings



1

low



2

moderate



3

considerabl

e



4

high



5

very high

Expositions

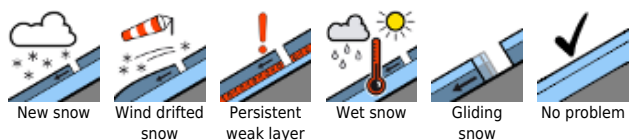


21.03.2021

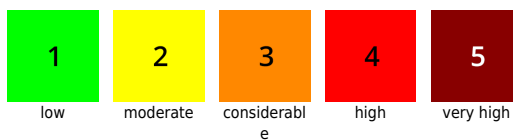
Outlook

On Monday as a result of fresh snow and storm-strength winds, there will be more avalanche prone locations. The snowdrift situation will reach a new climax. Widespread CONSIDERABLE avalanche danger even below the treeline.

Avalanche problems



Danger ratings

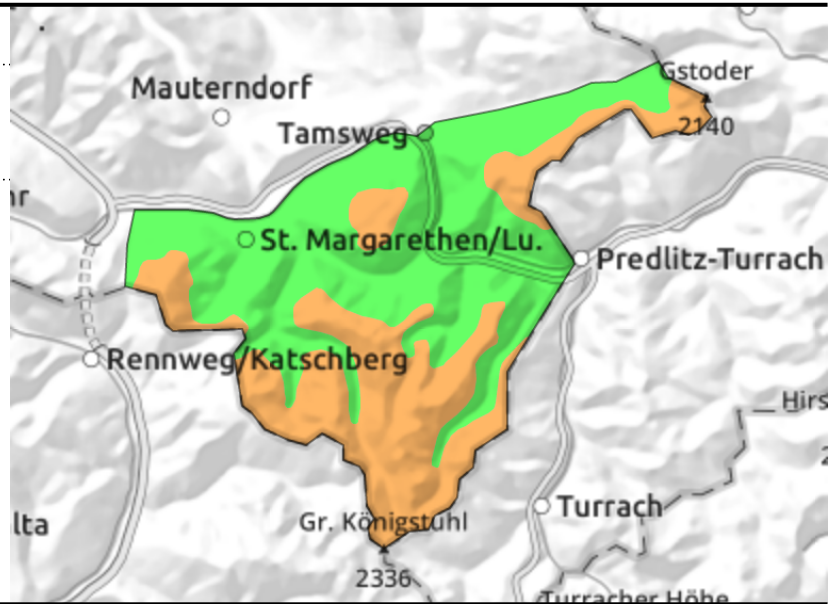
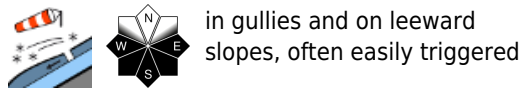
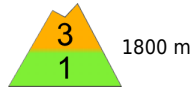


Expositions



21.03.2021

Nockberge



Stormy north winds generating new snowdrifts

Avalanche danger above 1800 m is **CONSIDERABLE** due to **fresh snowdrift accumulations**, below that altitude danger is MODERATE. Steep wind-loaded slopes should be avoided. Triggering a slab avalanche is possible even by minimum additional loading. This applies to slopes near to and distant from ridgelines in W-S-E aspects, as well as to steep gullies. Potential slab avalanches are small-to-medium sized. Avalanche prone locations lie immediately adjacent to windblown, hardened surfaces, and are easy to recognize.

Snowpack structure

There is about 20-30 cm of old powder below 1900 m which will be swept away by the intensifying winds. Fresh snowdrift accumulations will be generated, deposited in gullies and often on leeward slopes. Elsewhere the terrain is windblown and hard. The old snowpack below is generally stable.

Weather

Initially some sunshine, then heavy cloud cover will move in. Visibility will become diffuse, but the peaks will remain free. Starting in the evening hours, light snowfall will set in. Strong to storm-strength NW winds will **intensify (50-70 km/hr)**, extending down to the valleys. Temperatures will rise by 5-8 degrees. At 2000 m: -10 degrees.

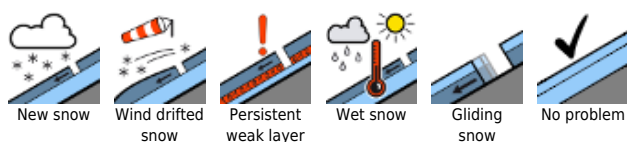
On Monday, variable weather conditions will continue with lots of clouds, some sunshine, and a few snow showers. Strong-to-**storm strength northerly winds** will be blowing. At 2000 m: -11 degrees. Fresh snow between Sunday afternoon and Monday afternoon: about 5 cm.

Outlook

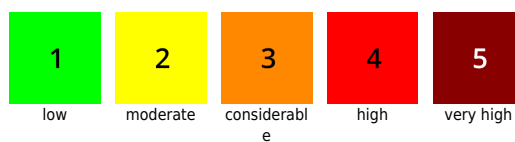
On Monday, northerly winds will ensure that there is no decrease in avalanche danger.

Translated by Jeffrey McCabe, www.creativtrans.com

Avalanche problems



Danger ratings



Expositions

