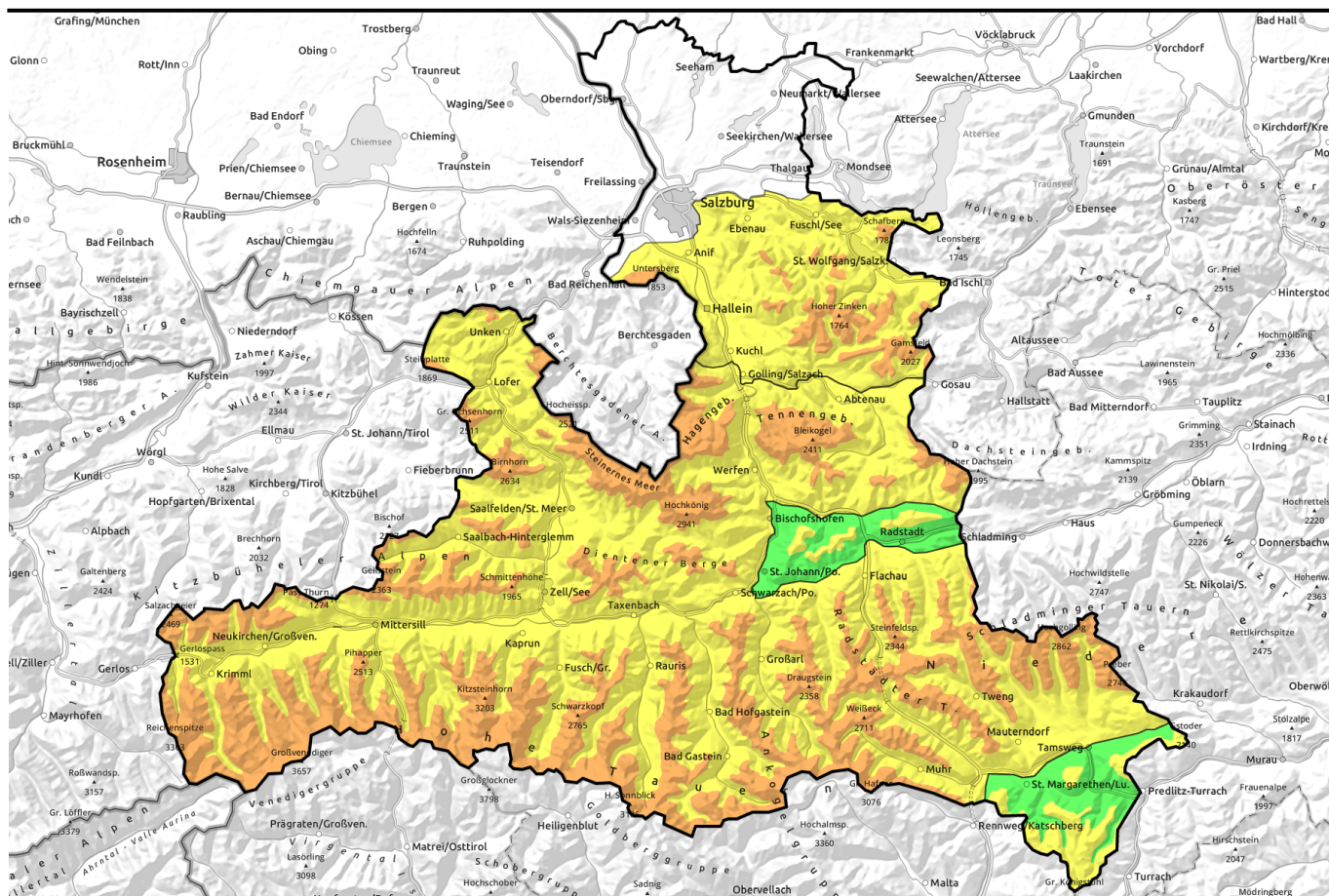


20.03.2021



Restraint is called for! Ridgeline snowdrift situation, fresh-snow situation.

	<p>1800 m</p>	
<p>Chiemgauer Alpen, Heutal, Reiteralpe, Loferer und Leoganger Steinberge, Steinernes Meer, Hochkönig, Hagengebirge, Göllstock, Tennengebirge, Gosaukamm, Dientner Grasberge, Kitzbüheler Alpen, Glemmtal, Oberpinzgauer Grasberge, Großvenedigergruppe Nord, Großvenedigergruppe Alpenhauptkamm, Glocknergruppe Nord, Glocknergruppe Alpenhauptkamm, Goldberggruppe Nord, Niedere Tauern Alpenhauptkamm, Niedere Tauern Süd, Ankogelgruppe, Muhr, Goldberggruppe Alpenhauptkamm, Niedere Tauern Nord</p>		
	<p>1500 m</p>	
<p>Osterhorngruppe, Gamsfeldgruppe, Untersbergstock</p>		
	<p>1600 m</p>	
<p>Pongauer Grasberge</p>		
	<p>1800 m</p>	
<p>Nockberge</p>		

Avalanche problems



Danger ratings

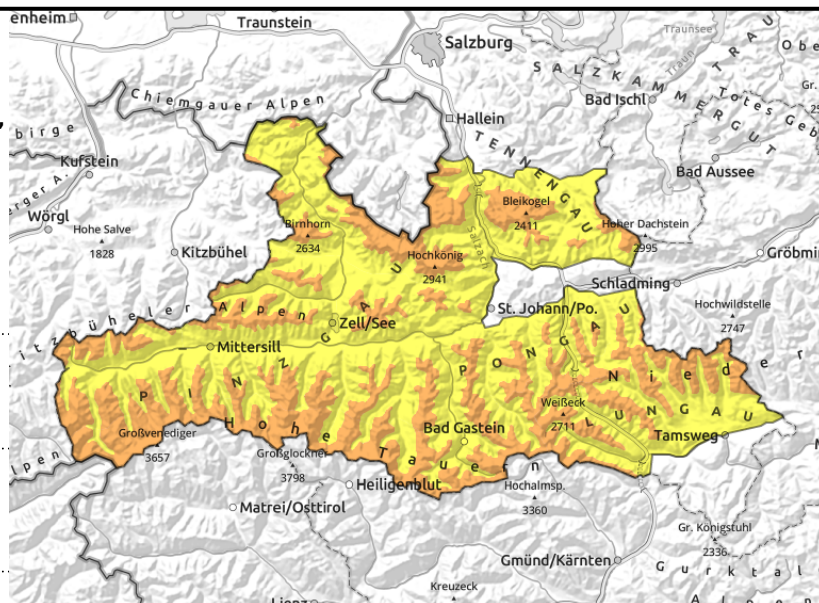


Expositions



20.03.2021

Chiemgauer Alpen, Heutal, Reiteralpe, Loferer und Leoganger Steinberge, Steinernes Meer, Hochkönig, Hagengebirge, Göllstock, Tennengebirge, Gosaukamm, Dientner Grasberge, Kitzbüheler Alpen, Glemmtal, Oberpinzgauer Grasberge, Großvenedigergruppe Nord, Großvenedigergruppe Alpenhauptkamm, Glocknergruppe Nord, Glocknergruppe Alpenhauptkamm, Goldberggruppe Nord, Niedere Tauern Alpenhauptkamm, Niedere Tauern Süd, Ankogelgruppe, Muhr, Goldberggruppe Alpenhauptkamm, Niedere Tauern Nord



near ridgelines, often easily triggered



loose-snow avalanches in steep terrain

Avoid very steep terrain above 1800 m

Avalanche danger above 1800 m is CONSIDERABLE due to ridgeline snowdrifts, below that altitude danger is MODERATE (due mainly to glide-snow and loose-snow). Defensive conduct and careful tracking are imperative in backcountry, more so with ascending altitude.

Triggering a slab avalanche is possible by the weight of one single skier in steep and ridgeline terrain, particularly in W-S-E aspects and in steep gullies. Potential slab avalanches are generally medium-to-large sized.

On extremely steep slopes and in rocky steep terrain, naturally triggered small-to-medium avalanches are possible (loose-snow avalanches with powder cloud). Isolated glide-snow avalanches are possible over slopes which were bare before recent snowfall.

Snowpack structure

The great amounts of fresh snow over the last few days have formed a rather homogenous layer. Test and analysis on Friday showed a positive development. In a few cases there were fractures in the old snow, particularly on steep S-E facing slopes. There, at altitudes above 2200 m there were isolated remote triggerings and settling noises observed.

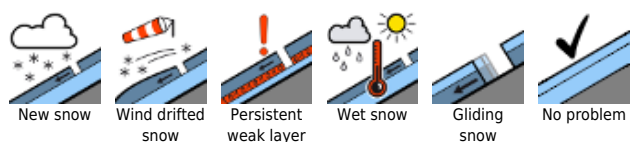
On Friday night, 15-30 cm of cold, loose fresh snow will be added to this. With ascending altitude it will be transported, and will generate fresh, soft snowdrifts.

Weather

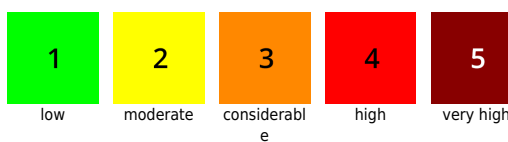
On Saturday, fog will dominate, visibility will be limited by snowfall. In the afternoon it will become drier, some sunshine is anticipated. A moderate northerly wind will be blowing, stronger at high altitudes. Temperature at 2000 m: -15 degrees; at 3000 m: -22 degrees.

On Sunday, heavy cloud cover will move in during the daytime, visibility will initially be adequate. As of midday, light snowfall will set in. Above the treeline it will be heavy, at high altitudes there will also be stormy northerly winds. At 2000 m: -13 to -10 degrees; at 3000 m, -13 degrees.

Avalanche problems



Danger ratings



Expositions

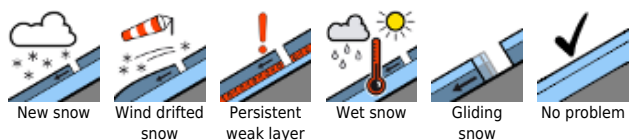


20.03.2021

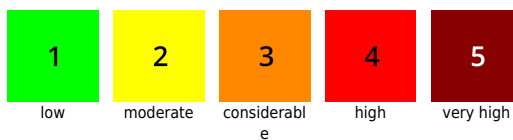
Outlook

On Sunday, northerly wind will intensify above the treeline. Caution: wind could intensify the snowdrift situation noticeably. **CONSIDERABLE** avalanche danger.

Avalanche problems



Danger ratings



Expositions



20.03.2021

Osterhorngruppe, Gamsfeldgruppe, Untersbergstock



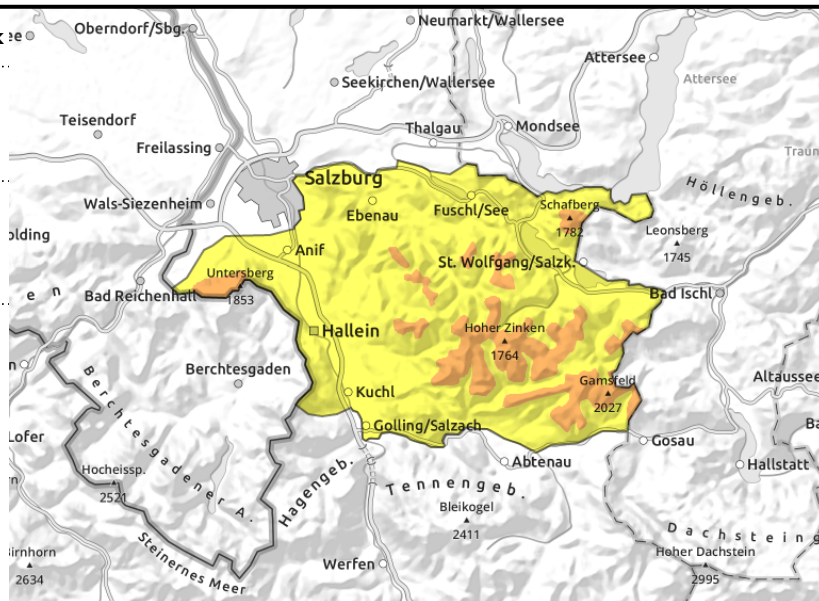
1500 m



ridgeline zones, often easily triggerable



on steep grassy slopes which previously were bare



Ridgeline snowdrifts, isolated large-sized glide-snow avalanches

Avalanche danger above 1500 m is CONSIDERABLE due to ridgeline snowdrifts, below that altitude danger is MODERATE (due to snowdrifts).

On very steep and ridgeline slopes, isolated slab avalanches can be triggered even by the weight of one single skier. This applies particularly to ridgeline steep terrain in W-S-NE aspects. Potential slab avalanches are mostly medium-to-large sized.

The homogenous snow mass is leading to the first glide-snow avalanches on extremely steep grass-covered slopes. These can grow to large size.

Snowpack structure

The great amounts of fresh snow over recent days have formed a rather homogenous layer. The sink-in depths have receded significantly. The uppermost layer of fresh snow was deposited as snowdrifts in exposed high altitude terrain in ridgeline zones.

On Friday night: 20-30 cm of cold, loosely-packed fresh snow. This will be transported, increasingly with ascending altitude, and will generate fresh soft snowdrifts.

Weather

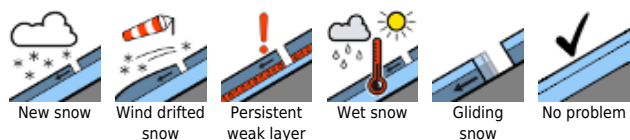
On Saturday, fog will dominate, visibility will be limited by snowfall. In the afternoon it will become drier, some sunshine is anticipated. A moderate northerly wind will be blowing, stronger at high altitudes. Temperature at 1500 m: -11 degrees; at 2000 m: -15 degrees.

On Sunday, heavy cloud cover will move in during the daytime, visibility will initially be adequate. As of midday, light snowfall will set in. Above the treeline it will be heavy, at high altitudes there will also be stormy northerly winds. At 1500 m: -9 degrees.

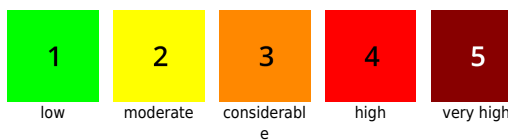
Outlook

On Sunday, northerly wind will intensify above the treeline. Caution: wind could intensify the snowdrift situation noticeably. CONSIDERABLE avalanche danger.

Avalanche problems



Danger ratings

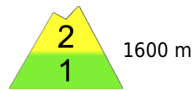


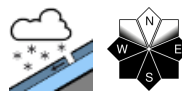
Expositions

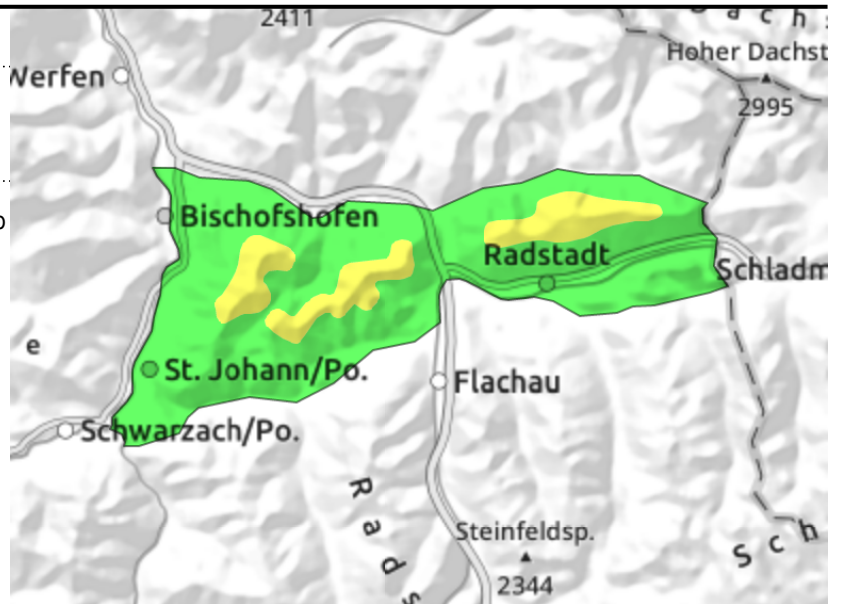


20.03.2021

Pongauer Grasberge



 loose-snow avalanches in steep terrain



Loose-snow avalanches in steep terrain

Avalanche danger above 1600 m is MODERATE.

Triggering a small slab avalanche is conceivable in very steep ridgeline terrain. This applies to steep ridgeline zones in W-S-E aspects.

On extremely steep slopes, slides of fresh snow and loose-snow avalanches (small) can be triggered.

Snowpack structure

The great amounts of fresh snow recently are rather homogenous. The sink-in depths have receded significantly. On Friday night, an additional 10-20 cm of cold, loose fresh snow will be added to it. Snow transport is anticipated only in the summit zones.

Weather

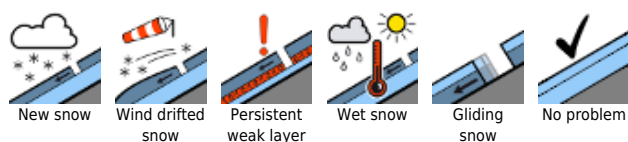
On Saturday, fog will dominate, visibility will be limited by snowfall. In the afternoon it will become drier, some sunshine is anticipated. A moderate northerly wind will be blowing, stronger at high altitudes. Temperature at 1500 m: -11 degrees; at 2000 m: -15 degrees.

On Sunday, heavy cloud cover will move in during the daytime, visibility will initially be adequate. As of midday, light snowfall will set in. Above the treeline it will be heavy, at high altitudes there will also be stormy northerly winds. At 1500 m: -9 degrees.

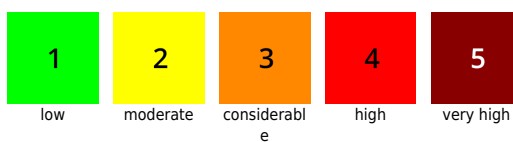
Outlook

On Sunday, northerly wind will intensify above the treeline. Caution: wind could intensify the snowdrift situation noticeably. CONSIDERABLE avalanche danger.

Avalanche problems



Danger ratings





Expositions

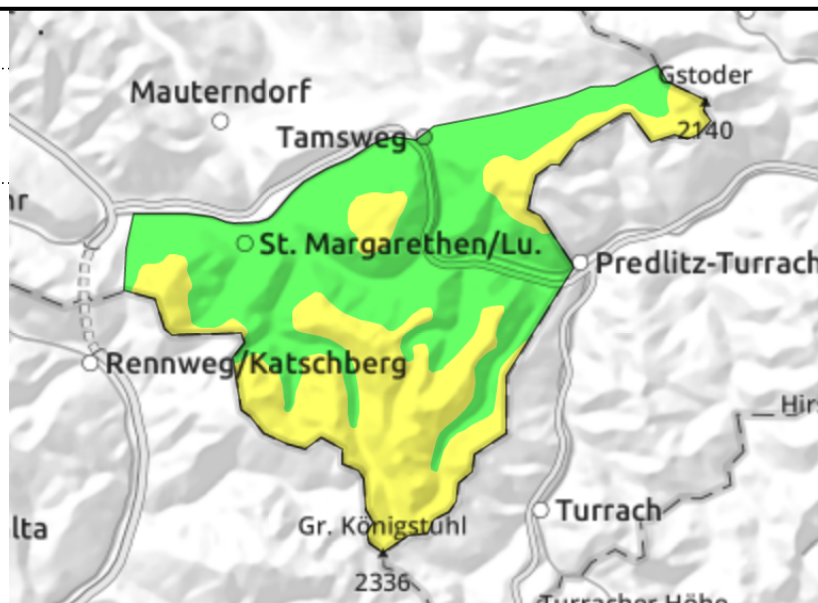


20.03.2021

Nockberge



  in gullies, mostly by large additional loading



Caution urged in gullies

Avalanche danger is MODERATE above 1800 m due to snowdrift masses in gullies. These are triggerable, primarily by large additional loading (not maintaining distances, a fall, etc.) Potential avalanches can be medium-sized. Avalanche prone locations are found immediately adjacent to windblown surfaces, are easy to recognize.

Snowpack structure

There is about 20-30 cm of older fresh snow below 1900 m due to the drifted masses in gullies. Further up, the terrain is windblown and hard. The most recent snowdrifts are found in gullies in all aspects. Below the treeline and in wind-protected zones there is beautiful powder. The old snowpack beneath it is generally stable.

Weather

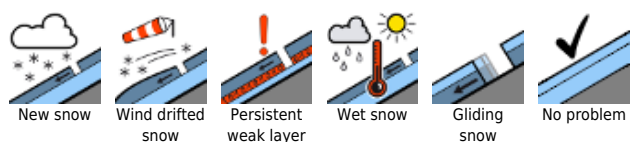
On Saturday, more cloud cover, adequate visibility. The northerly wind will intensify (30-40 km/hr). Temperature at 2000 m: -12 degrees.
 On Sunday, strong / nearly storm-strength northerly winds (50- km/hr). Sunshine and clouds will alternate. Cold: -13 degrees at 2000 m.

Outlook

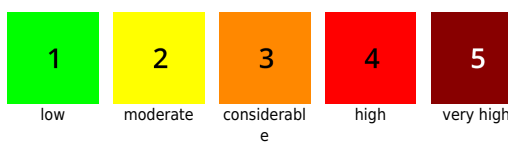
On Sunday, northerly winds will generate fresh snowdrifts. The danger of slab avalanches will increase somewhat. Avalanche prone locations will mostly be in gullies.

Translated by Jeffrey McCabe, www.creativtrans.com

Avalanche problems



Danger ratings



Expositions

