

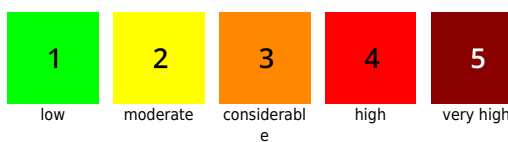
Treacherous! Lots of fresh snow, many freshly-generated snowdrifts, highly varied conditions over small spaces

	<p>1800 m</p>	<p>Tennengebirge, Gosaukamm, Steinernes Meer, Hochkönig, Hagengebirge, Göllstock, Loferer und Leoganger Steinberge, Großvenedigergruppe Nord, Großvenedigergruppe Alpenhauptkamm, Glocknergruppe Alpenhauptkamm, Goldberggruppe Alpenhauptkamm, Glocknergruppe Nord</p>	
		<p>Osterhorngruppe, Gamsfeldgruppe, Untersbergstock, Chiemgauer Alpen, Heutal, Reiteralpe, Oberpinzgauer Grasberge, Goldberggruppe Nord, Niedere Tauern Nord, Niedere Tauern Alpenhauptkamm, Niedere Tauern Süd, Ankogelgruppe, Muhr</p>	
	<p>1500 m</p>	<p>Pongauer Grasberge, Dientner Grasberge, Kitzbüheler Alpen, Glemmtal</p>	
	<p>1800 m</p>	<p>Nockberge</p>	

Avalanche problems



Danger ratings

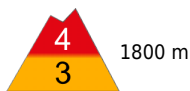


Expositions



17.03.2021

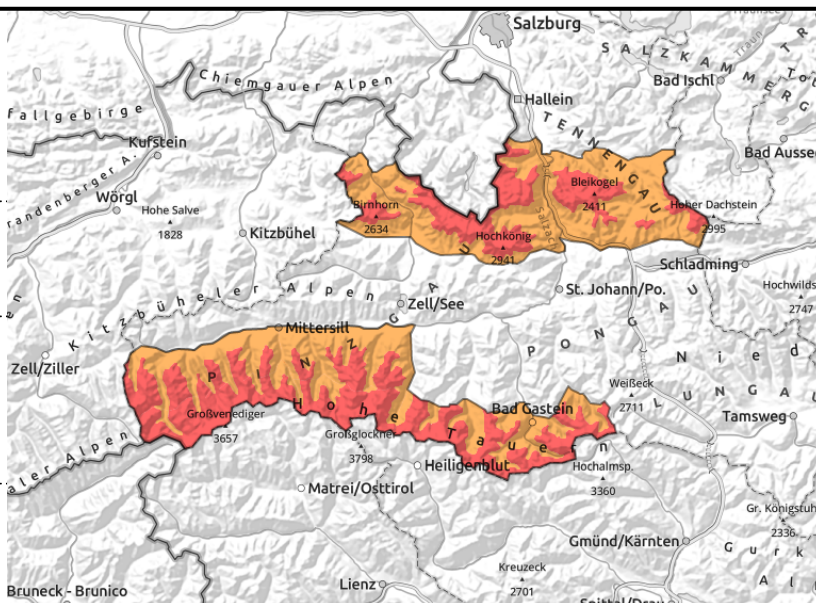
Tennengebirge, Gosaukamm, Steinernes Meer, Hochkönig, Hagengebirge, Göllstock, Loferer und Leoganger Steinberge, Großvenedigergruppe Nord, Großvenedigergruppe Alpenhauptkamm, Glocknergruppe Alpenhauptkamm, Goldberggruppe Alpenhauptkamm, Glocknergruppe Nord



heavy snowfall, more with ascending altitude, naturally triggered avalanches possible on steep slopes



wide-ranging snowdrifts, even below treeline, easily triggered



HIGH avalanche danger in some places

Avalanche danger **above about 1800 m is HIGH**. Conditions in outlying terrain away from secured ski runs are extremely unfavourable due to poor visibility and the potential of naturally triggered avalanches in high starting zones. We advise against all backcountry tours.

Triggering a slab avalanche in steep terrain is likely even by the weight of one single skier.

Moreover, due to poor visibility, the potential for naturally triggered avalanches in high-altitude starting zones forces us to urge all skiers: undertake no backcountry tours!

In very steep wind-loaded zones and steep, rocky terrain, also **naturally triggered medium-to-large sized avalanches are possible**. Releases at high altitudes can develop powder clouds and thereby reach far greater runout zones.

Snowpack structure

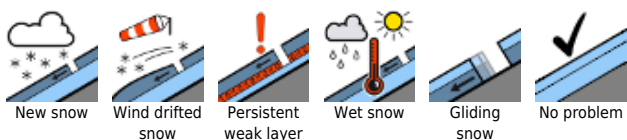
During the last three days there has been heavy snowfall. Winds have transported snow even below the treeline. The overall amounts of fresh snow range between 50 and 90 cm, higher with ascending altitude. The old snowpack is stable overall. But there are potential weak layers at the borderlines to the old snowpack or in the uppermost layers of the snowpack, e.g. beneath sunny-side melt-freeze crusts, or on shady slopes in blanketed-over hoar. A further potential fracture point lies in the fresh snow itself.

Weather

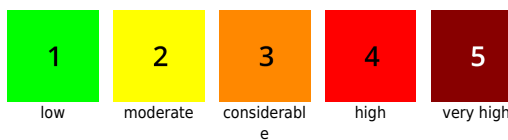
On **Wednesday**, visibility will be poor. Peaks will be veiled in fog. Repeated heavy snow showers will pass through. In the afternoon, clouds could disperse, somewhat. Fresh snow: all in all, on Tuesday night and on Wednesday there will be an additional 30-40 cm. Winds will be blowing at 30-40 km/hr from the northwest in exposed terrain. Temperature at 2000 m: -10 degrees; at 3000 m: -17 degrees.

On **Thursday**, visibility will still be reduced. Fog, low-lying clouds, some snow showers. Snowfall will slacken off significantly during the day. A few bright intervals (diffuse light) are expected now and again. NW winds will be blowing at 30 km/hr. It will remain cold. Temperature at 2000 m: -10 degrees, at 3000 m: -17 degrees.

Avalanche problems



Danger ratings



Expositions

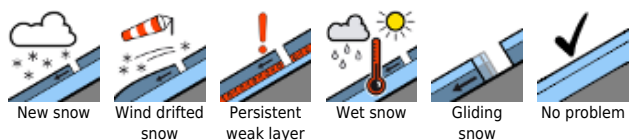


17.03.2021

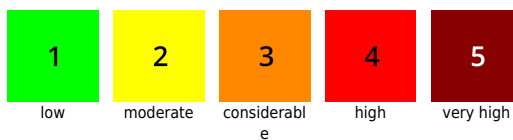
Outlook

On Thursday and Friday, avalanche danger will remain treacherous, particularly above the timberline. Steep terrain should be avoided under all circumstances. Wait it out! **CONSIDERABLE** danger prevails.

Avalanche problems



Danger ratings

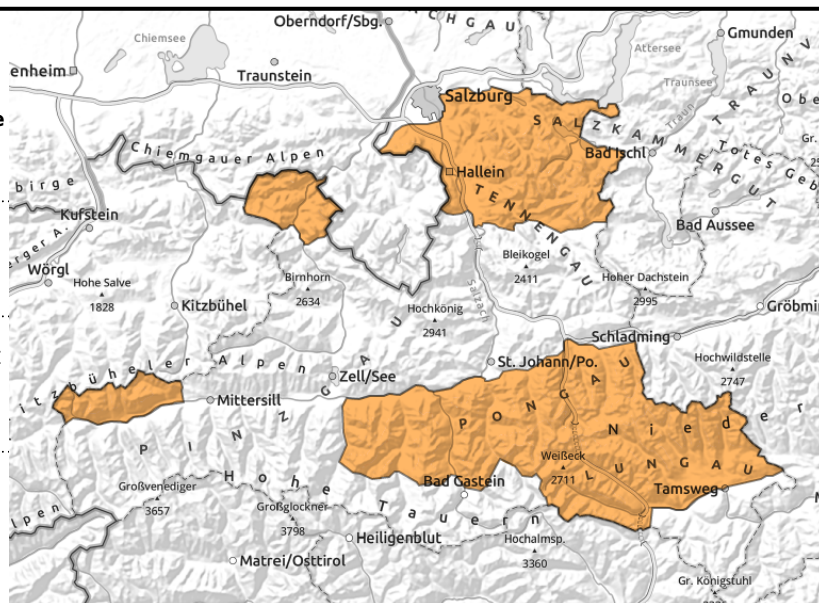


Expositions



17.03.2021

Osterhorngruppe, Gamsfeldgruppe, Untersbergstock, Chiemgauer Alpen, Heutal, Reiteralpe, Oberpinzgauer Grasberge, Goldberggruppe Nord, Niedere Tauern Nord, Niedere Tauern Alpenhauptkamm, Niedere Tauern Süd, Ankogelgruppe, Muhr



far-reaching snowdrifts, distant from ridgelines, also below treeline, often easily triggered



swiftly increasing with ascending altitude, loose-snow avalanches in steep terrain

Avalanche danger is **CONSIDERABLE**. Backcountry tours demand restraint, knowledge of local terrain and, most of all, circumventing all steep terrain. In many places in steep terrain, **even minimum additional loading can trigger a slab avalanche**. Avalanche prone locations occur in gullies and bowls in all aspects and in steep N-E-S terrain. This applies also to protruberances distant from ridgelines and to steep forest lanes.

On very steep wind-loaded slopes and in rocky steep terrain, **naturally triggered avalanches are possible**. Loose-snow and slab avalanches will be medium sized for the most part, in isolated cases large-sized.

Snowpack structure

Over the last three days there has been heavy snowfall. Winds have transported snow even below the treeline. The overall amounts of fresh snow range between 50 and 90 cm, more with ascending altitude. The old snowpack is stable overall. But there are potential weak layers at the borderlines to the old snowpack or in the uppermost layers of the snowpack, e.g. beneath sunny-side melt-freeze crusts, or on shady slopes in blanketed-over hoar. A further potential fracture point lies in the fresh snow itself.

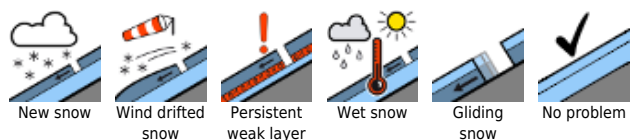
Weather

On **Wednesday**, visibility will be poor. Peaks will be veiled in fog. Repeated heavy snow showers will pass through. In the afternoon, clouds could disperse, somewhat. Fresh snow: all in all, on Tuesday night and on Wednesday there will be an additional 30-40 cm. Winds will be blowing at 30-40 km/hr from the northwest in exposed terrain. Temperature at 2000 m: -10 degrees; at 3000 m: -17 degrees. On **Thursday**, visibility will still be reduced. Fog, low-lying clouds, some snow showers. Snowfall will slacken off significantly during the day. A few bright intervals (diffuse light) are expected now and again. NW winds will be blowing at 30 km/hr. It will remain cold. Temperature at 2000 m: -11 degrees.

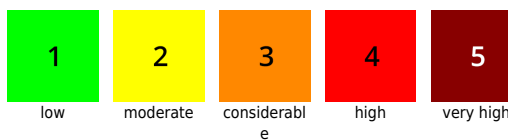
Outlook

On Thursday and Friday, avalanche danger will remain treacherous especially above the timberline. Steep terrain should be circumvented under all circumstances. Wait it out! Danger level **CONSIDERABLE** prevails.

Avalanche problems



Danger ratings

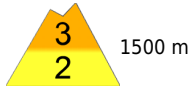


Expositions



17.03.2021

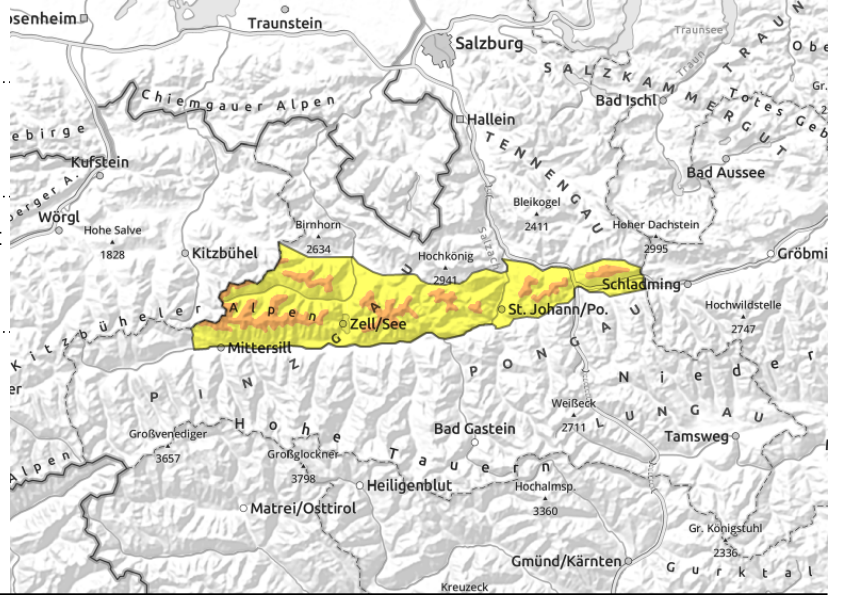
Pongauer Grasberge, Dientner Grasberge, Kitzbüheler Alpen, Glemmtal



far-reaching snowdrifts, distant from ridgelines, also below treeline, often easily triggered



swiftly increasing with ascending altitude, loosely-packed avalanches in steep terrain



Avalanche danger **above 1500 m is CONSIDERABLE**. Backcountry tours demand restraint, knowledge of local terrain and, most of all, circumventing all steep terrain. In many places in steep terrain, **even minimum additional loading can trigger a slab avalanche**. Avalanche prone locations occur in gullies and bowls in all aspects and in steep N-E-S terrain. This applies also to protruberances distant from ridgelines and to steep forest lanes. In very steep wind-loaded zones and rocky steep terrain, **isolated naturally triggered avalanches are possible**. Loose-snow and slab avalanches are generally medium-sized.

Snowpack structure

Over the last three days there has been heavy snowfall. Winds have transported snow even below the treeline. The overall amounts of fresh snow range between 50 and 90 cm, more with ascending altitude. The old snowpack is stable overall. But there are potential weak layers at the borderlines to the old snowpack or in the uppermost layers of the snowpack, e.g. beneath sunny-side melt-freeze crusts, or on shady slopes in blanketed-over hoar. A further potential fracture point lies in the fresh snow itself.

Weather

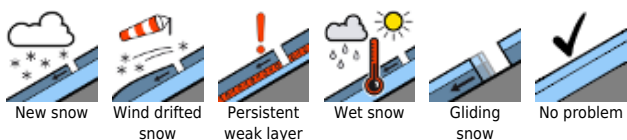
On **Wednesday**, visibility will be poor. Peaks will be veiled in fog. Repeated heavy snow showers will pass through. In the afternoon, some clouds might disperse, somewhat. Fresh snow: all in all, on Tuesday night and on Wednesday there will be an additional 30-40 cm. Winds will be blowing at 30-40 km/hr from the northwest in exposed terrain. Temperature at 2000 m: -10 degrees; at 3000 m: -17 degrees.

On **Thursday**, visibility will still be reduced. Fog, low-lying clouds, some snow showers. Snowfall will slacken off significantly during the day. A few bright intervals (diffuse light) are expected now and again. NW winds will be blowing at 30 km/hr. It will remain cold. Temperature at 2000 m: -11 degrees.

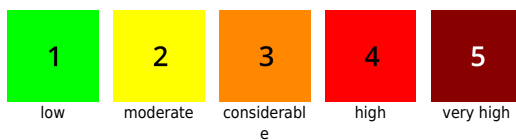
Outlook

On Thursday and Friday, avalanche danger will remain treacherous, especially above the timberline. Steep terrain should be circumvented under all circumstances. Wait it out! **CONSIDERABLE** danger prevails.

Avalanche problems



Danger ratings





Expositions

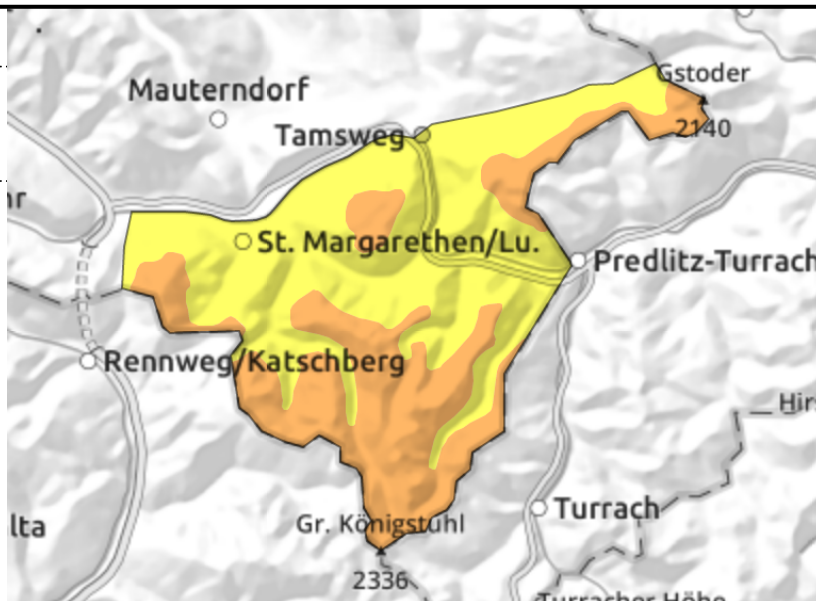


17.03.2021

Nockberge



  far-reaching snowdrifts above treeline, also distant from ridgelines



AVOID steep wind-loaded zones!

Avalanche danger above 1800 m is **CONSIDERABLE** due to freshly generated snowdrifts. The drifts **can be easily triggered in some places on steep slopes**, even the impulse of one single skier can release a medium-sized slab avalanche. Avalanche prone locations are found in gullies and very steep leeward terrain (NE-S-W). Danger zones are easily recognized.

Snowpack structure

The last few days have brought about 20 cm of fresh snow accompanied by strong-velocity northerly winds. Above the treeline massive snowdrift accumulations have been generated. Below the treeline and in wind-protected zones there is beautiful powder. The old snowpack beneath this is generally stable. But there are potential weak layers at the borderlines to the old snowpack and in the uppermost layers of the snowpack.

Weather

On **Wednesday**, sunshine will alternate with cloud cover passing through. Occasional snow showers are possible, but all in all there will be little relevant fresh snow. Visibility will be adequate to good, the peaks will remain free. Winds will be northerly, blowing at 30-40 km/hr. Temperature at 1500 m: -6 degrees; at 2500 m: -13 degrees.

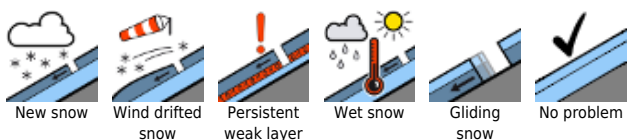
On **Thursday**, similar conditions will reign, Sunshine and clouds will alternate, visibility will be adequate, no precipitation. Cold northerly wind at 30 km/hr. Temperature at 2500 m: -13 degrees.

Outlook

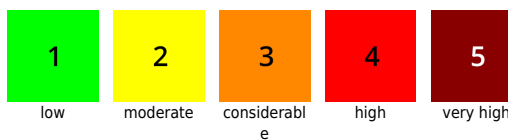
On Thursday the danger of slab avalanches above 1800 m will remain **CONSIDERABLE**. As of Friday or Saturday, the likelihood of avalanches triggering will diminish, danger level will sink to **MODERATE**.

Translated by Jeffrey McCabe, www.creativtrans.com

Avalanche problems



Danger ratings



Expositions

