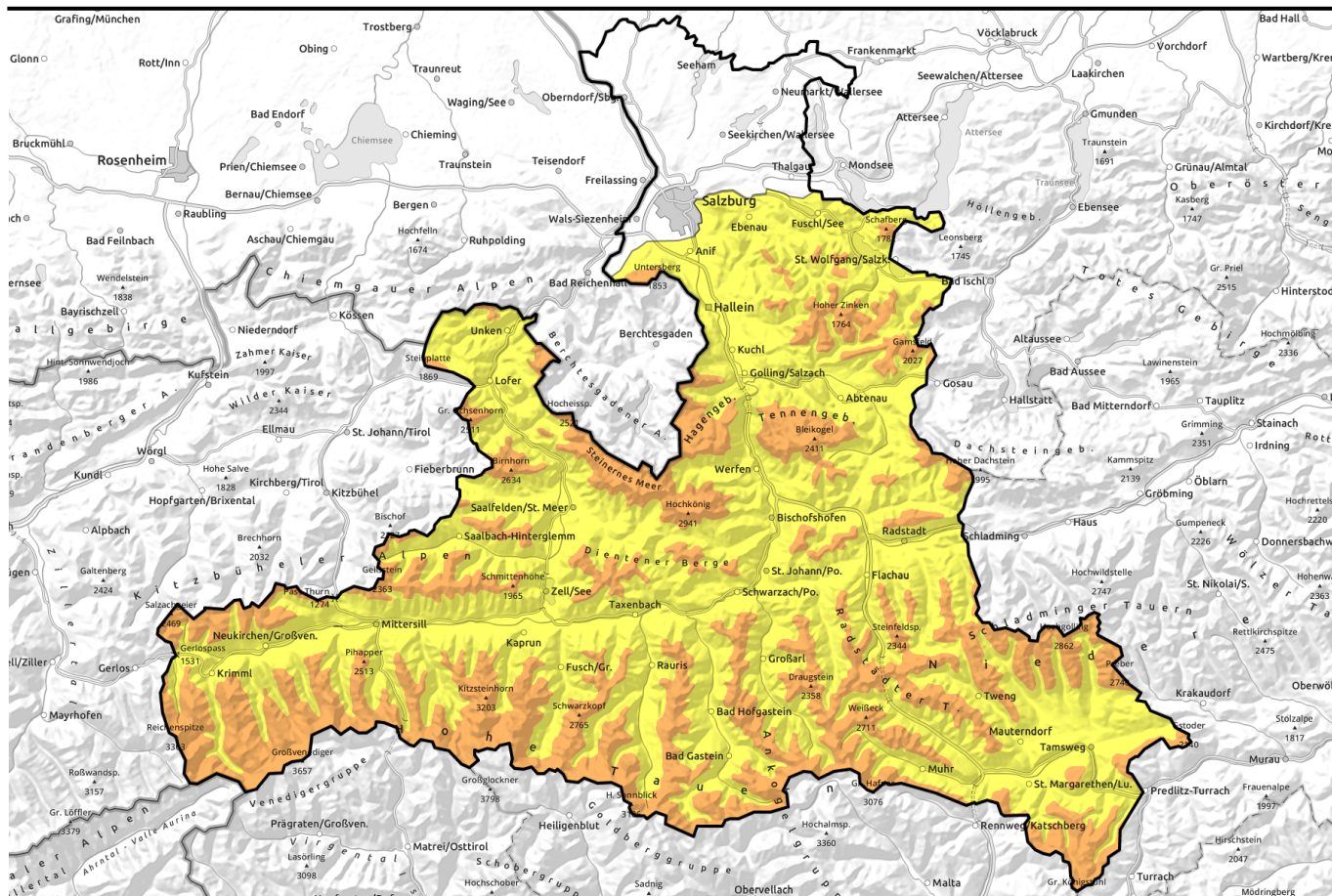


**15.03.2021**



## Heavy snowfall plus heavy wind impact from west-to-northwest

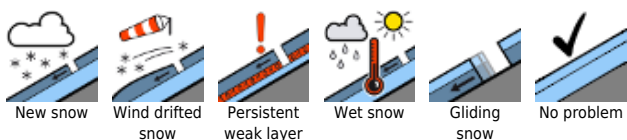


1600 m

Großenedigergruppe Nord, Großenedigergruppe Alpenhauptkamm, Glocknergruppe Nord, Glocknergruppe Alpenhauptkamm, Goldberggruppe Nord, Goldberggruppe Alpenhauptkamm, Niedere Tauern Alpenhauptkamm, Osterhorngruppe, Gamsfeldgruppe, Untersbergstock, Chiemgauer Alpen, Heutal, Reiteralpe, Loferer und Leoganger Steinberge, Kitzbüheler Alpen, Oberpinzgauer Grasberge, Dientner Grasberge, Steinernes Meer, Hochkönig, Hagengebirge, Göllstock, Nockberge, Niedere Tauern Süd, Pongauer Grasberge, Tennengebirge, Gosaukamm, Niedere Tauern Nord, Ankogelgruppe, Muhr



### Avalanche problems



### Danger ratings

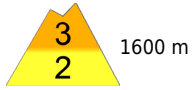
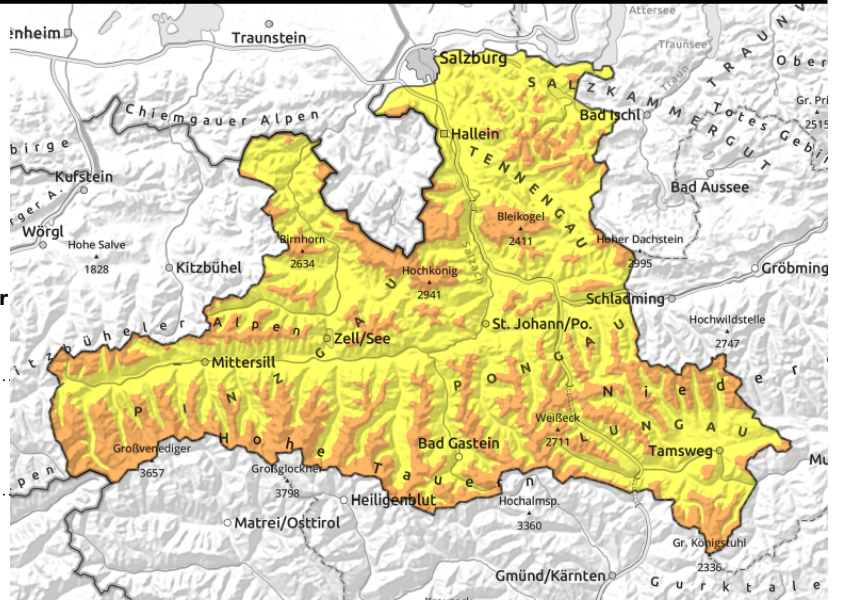


### Expositions



**15.03.2021**

Großvenedigergruppe Nord, Großvenedigergruppe Alpenhauptkamm, Glocknergruppe Nord, Glocknergruppe Alpenhauptkamm, Goldberggruppe Nord, Goldberggruppe Alpenhauptkamm, Niedere Tauern Alpenhauptkamm, Osterhorngruppe, Gamsfeldgruppe, Untersbergstock, Chiemgauer Alpen, Heutal, Reiteralpe, Loferer und Leoganger Steinberge, Kitzbüheler Alpen, Glemmtal, Oberpinzgauer Grasberge, Dientner Grasberge, Steinernes Meer, Hochkönig, Hagengebirge, Göllstock, Nockberge, Niedere Tauern Süd, Pongauer Grasberge, Tennengebirge, Gosaukamm, Niedere Tauern Nord, Ankogelgruppe, Muhr



1600 m



far-reaching snowdrifts, exposed terrain is windblown



fresh snow increases rapidly with ascending altitude, atop unfavourable base

## Wind-impacted fresh snow and weak uppermost layers

Avalanche danger above sparsely wooded zones is **CONSIDERABLE**. Danger derives directly from the amount of fresh snow and wind impact. In many places, a medium-sized slab avalanche can be triggered even by the weight of one single skier. Avalanche prone locations are found in gullies in all aspects, in steep NW-N-E-S facing ridgeline slopes. Poor visibility makes on-site assessment of risks more difficult. In outlying terrain experience in evaluating avalanche dangers on-site is imperative.

### Snowpack structure

Since Saturday evening there has been 15-30 cm, as much as 40 cm of fresh snow registered in high altitude terrain of the Tauern and Northern Alps, often riddled with graupel. The snowfall was accompanied by strong-to-storm strength W/NW winds which often extended down to higher-altitude forested zones. Along the Tauern the fresh fallen snow blankets over the wide-ranging foehn-induced snowdrift accumulations from Saturday. Older snowdrifts also exist on east-facing slopes. Potential fracture points lurk inside the fresh snowdrifts and in the superficial weak layers or blanketed-over loosely-packed snow atop melt-freeze crusts.

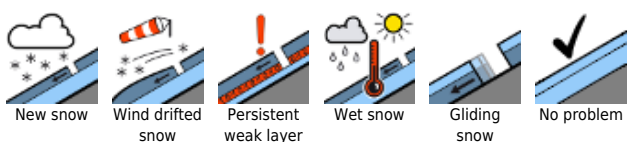
### Weather

On Monday, low-lying clouds, fog and snow showers will often reduce visibility. Around midday conditions will frequently be more pleasant, with more extended phases of dispersed cloud, particularly in the Nockberge. In the afternoon, snowfall from the northwest will intensify and be persistent. Winds will be blowing at moderate to brisk strength, at high altitudes at strong velocity, from westerly to northwesterly directions. At 2000 m, -8 to -6 degrees; at 3000 m, -16 to -14 degrees.

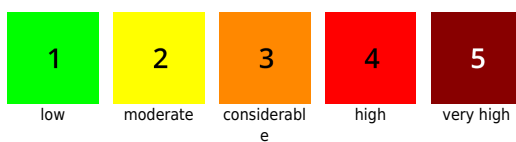
### Outlook

On Monday night and also during the day on Tuesday, persistent snowfall amid strong wind impact will continue. Danger of slab avalanches will be at least **CONSIDERABLE** widespread, requires

#### Avalanche problems



#### Danger ratings



#### Expositions



**15.03.2021**

experience and restraint in outlying terrain. Danger of naturally triggered avalanches on heavily wind-loaded slopes will increase.

Translated by Jeffrey McCabe, [www.creativtrans.com](http://www.creativtrans.com)

---

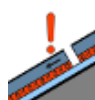
**Avalanche problems**



New snow



Wind drifted snow



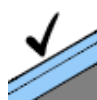
Persistent weak layer



Wet snow

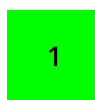


Gliding snow



No problem

**Danger ratings**



1

low



2

moderate



3

considerable



4

high



5

very high

**Expositions**

