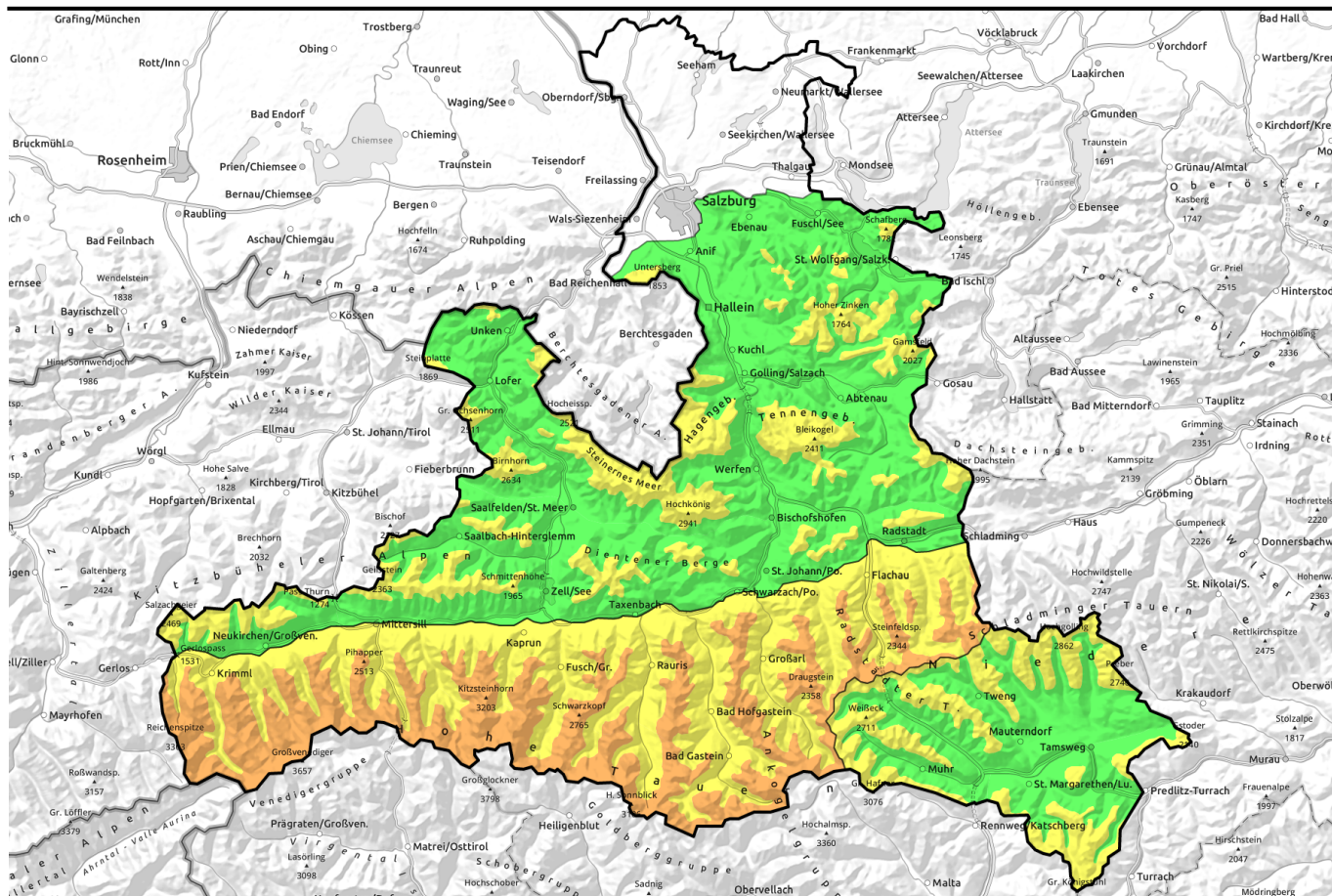


14.03.2021



Some fresh snow and stark wind impact from west-to-northwest



1600 m

Loferer und Leoganger Steinberge, Steinernes Meer, Hochkönig, Hagengebirge, Göllstock, Tennengebirge, Gosaukamm, Niedere Tauern Süd, Ankogelgruppe, Muhr, Chiemgauer Alpen, Heutal, Reiteralpe, Osterhorngruppe, Gamsfeldgruppe, Oberpinzgauer Grasberge, Kitzbüheler Alpen, Glemmtal, Dientner Grasberge, Pongauer Grasberge, Untersbergstock, Nockberge

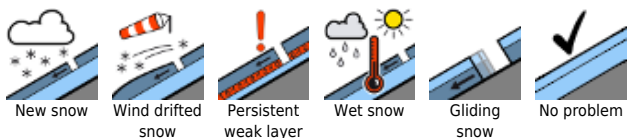


2100 m

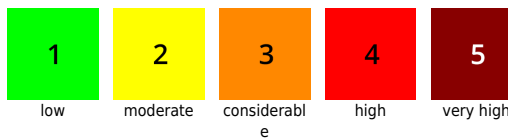
Großvenedigergruppe Nord, Großvenedigergruppe Alpenhauptkamm, Glocknergruppe Nord, Glocknergruppe Alpenhauptkamm, Goldberggruppe Nord, Goldberggruppe Alpenhauptkamm, Niedere Tauern Alpenhauptkamm, Niedere Tauern Nord



Avalanche problems



Danger ratings



Expositions

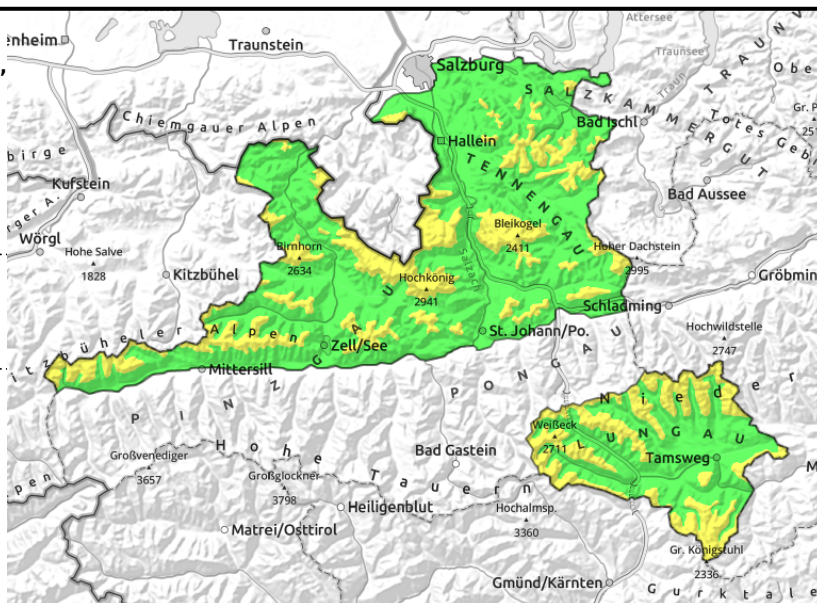


14.03.2021

Loferer und Leoganger Steinberge, Steinernes Meer, Hochkönig, Hagengebirge, Göllstock, Tennengebirge, Gosaukamm, Niedere Tauern Süd, Ankogelgruppe, Muhr, Chiemgauer Alpen, Heutal, Reiteralpe, Osterhorngruppe, Gamsfeldgruppe, Oberpinzgauer Grasberge, Kitzbüheler Alpen, Glemmtal, Dientner Grasberge, Pongauer Grasberge, Untersbergstock, Nockberge



shallow snowdrifts, near to and distant from ridgelines, in gullies, steep bowls



Caution: snowdrifts in steep terrain

Avalanche danger above sparsely wooded zones is MODERATE, below that altitude LOW. A small (in isolated cases medium-sized) slab avalanche can in some places be triggered by the weight of one single skier. Avalanche prone locations are found primarily in steep ridgeline terrain in N-E aspects and in wind-loaded gullies and bowls.

Snowpack structure

Cold, wind-impacted fresh snow (5-15 cm) has been deposited on top of a slightly moistened, often superficially encrusted old snowpack surface. On shady slopes in wind-protected zones, the base below 2300 m is still loosely-packed and dry. Strong (above 2000 m also stormy) W/NW winds (in the Nockberge also southerly) have generated shallow snowdrift accumulations. Older snowdrifts in N-E aspects have been blanketed over, particularly in the high alpine zones of Northern Alps and Tauern. Potential fracture points lie inside the fresh snowdrifts and at the borders to the older drifts.

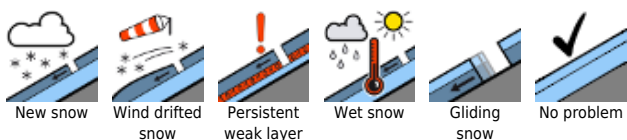
Weather

On Sunday, visibility will fluctuate radically, from some sunshine with no precipitation to snow-plus-graupel showers with zero visibility. In addition, strong-to-storm strength W/NW winds will frequently be blowing. Temperature: 5-10 degrees lower than recently: at 2000 m, -8 degrees; at 3000 m, -15 degrees.

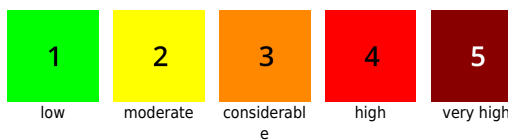
Outlook

As a result of further snowfall and wind impact on Monday, avalanche prone locations will increase. At high altitudes, CONSIDERABLE danger of slab avalanches.

Avalanche problems



Danger ratings



Expositions



14.03.2021

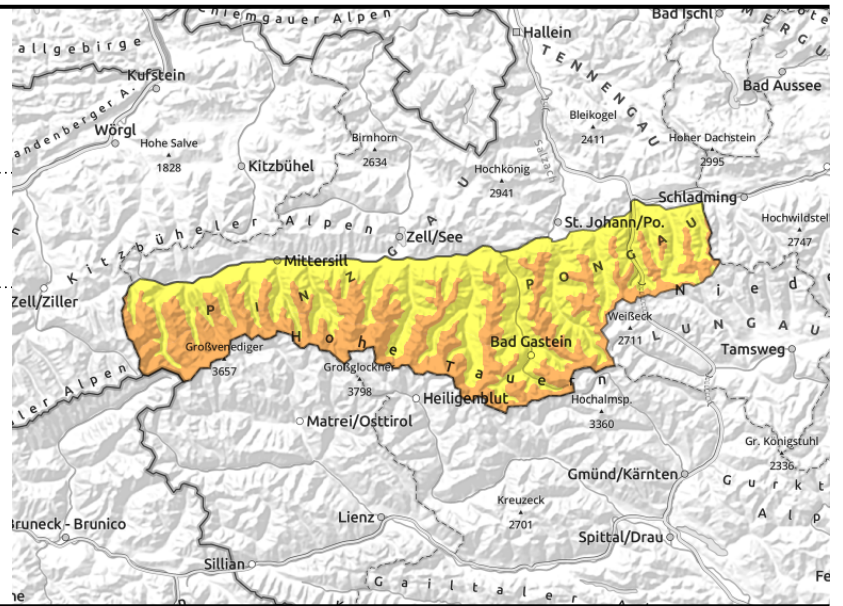
Großvenedigergruppe Nord, Großvenedigergruppe Alpenhauptkamm, Glocknergruppe Nord, Glocknergruppe Alpenhauptkamm, Goldberggruppe Nord, Goldberggruppe Alpenhauptkamm, Niedere Tauern Alpenhauptkamm, Niedere Tauern Nord



2100 m



wide-ranging snowdrifts, exposed terrain is windblown



Trigger-sensitive snowdrifts at high altitude, some hoar blanketed over

Avalanche danger above 2100 m is CONSIDERABLE, below that altitude down to sparsely wooded zones danger is MODERATE. At high altitudes, even minimum additional loading can trigger a medium-sized slab avalanche. Avalanche prone locations occur in gullies in all aspects, in steep terrain NW-N-E facing, also in terrain distant from ridgelines, and in ridgeline (extended) south-facing slopes. Also in north-facing sparsely wooded zones, danger of slab avalanches.

Snowpack structure

Cold, frequently wind-impacted fresh snow (10-20 cm) blankets wide-ranging foehn-induced snowdrift accumulations at high altitudes from Saturday and older snowdrifts on east-facing slopes. Away from foehn exposure, the base is at least slightly moistened, superficially encrusted. On shady, wind-protected slopes above 2300 m the snow is loosely-packed and dry. As a result of strong W/NW winds, fresh shallow snowdrift accumulations will be generated during the daytime. Apart from the unfavourable bonding of the drifts with each other, particularly on north-facing slopes near the timberline, blanketed-over surface hoar will be a potential fracture zone on Wednesday.

Weather

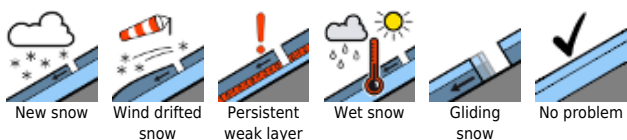
On Sunday, visibility will fluctuate radically, from some sunshine with no precipitation to snow-plus-graupel showers with zero visibility. In addition, strong-to-storm strength W/NW winds will frequently be blowing. Temperature: 5-10 degrees lower than recently: at 2000 m, -8 degrees; at 3000 m, -15 degrees.

Outlook

As a result of further snowfall and wind impact on Monday, avalanche prone locations will increase. At high altitudes, CONSIDERABLE danger of slab avalanches.

Translated by Jeffrey McCabe, www.creativtrans.com

Avalanche problems



Danger ratings



Expositions

