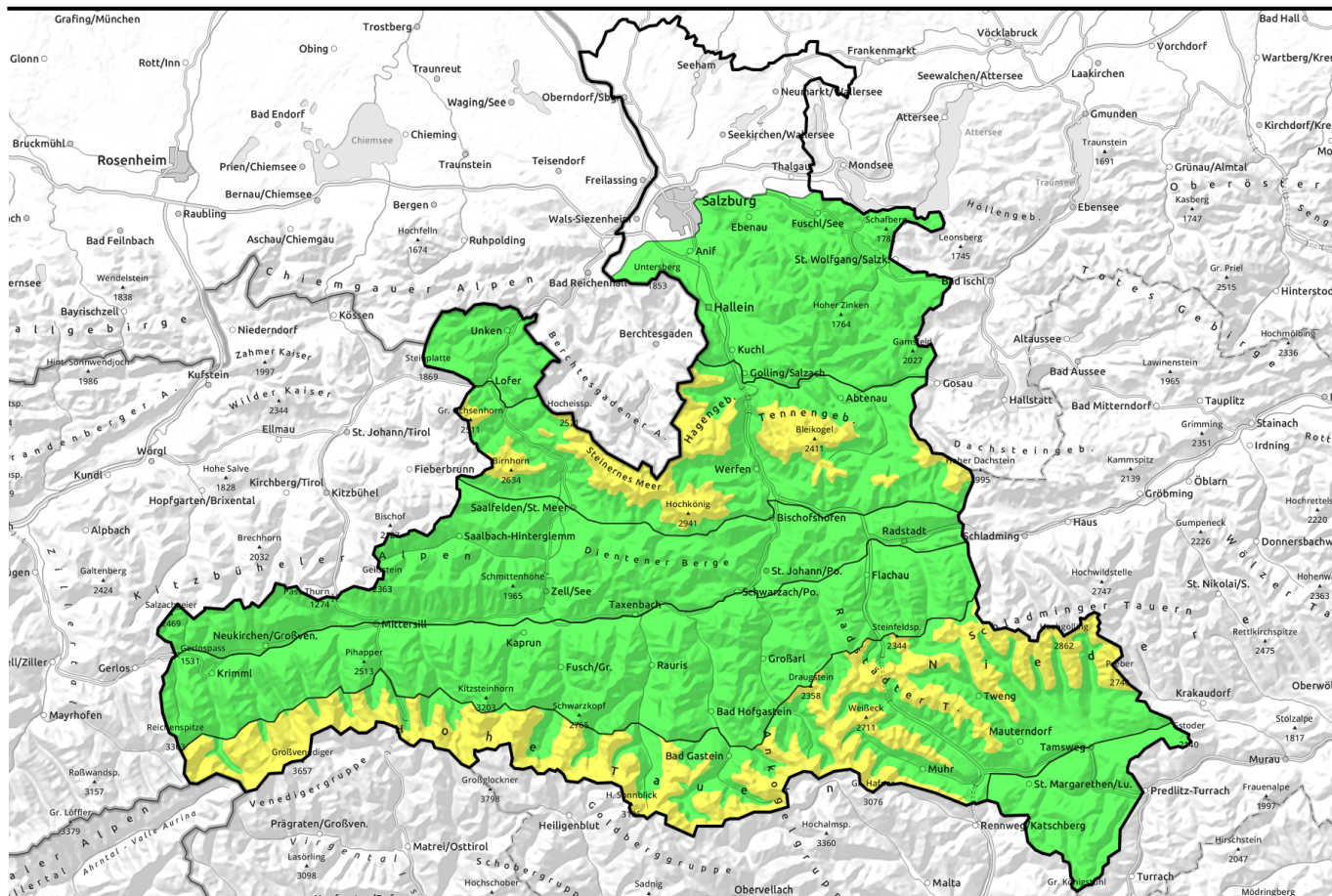





# 13.03.2021, morning




## Ridgeline snowdrifts at high and high-alpine altitudes

- 

Chiemgauer Alpen, Heutal, Reiteralpe, Untersbergstock, Osterhorngruppe, Gamsfeldgruppe, Pongauer Grasberge, Dientner Grasberge, Kitzbüheler Alpen, Glemmtal, Oberpinzgauer Grasberge






---


- 

2200 m



Loferer und Leoganger Steinberge, Steinernes Meer, Hochkönig, Hagengebirge, Göllstock, Tennengebirge, Gosaukamm, Großvenedigergruppe Alpenhauptkamm, Glocknergruppe Alpenhauptkamm, Goldberggruppe Alpenhauptkamm, Niedere Tauern Alpenhauptkamm, Niedere Tauern Süd, Ankogelgruppe, Muhr

---

- 

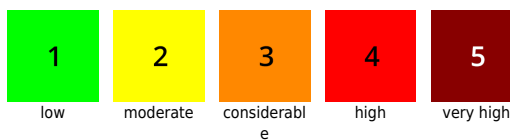
Großvenedigergruppe Nord, Glocknergruppe Nord, Goldberggruppe Nord, Niedere Tauern Nord, Nockberge

### Avalanche problems



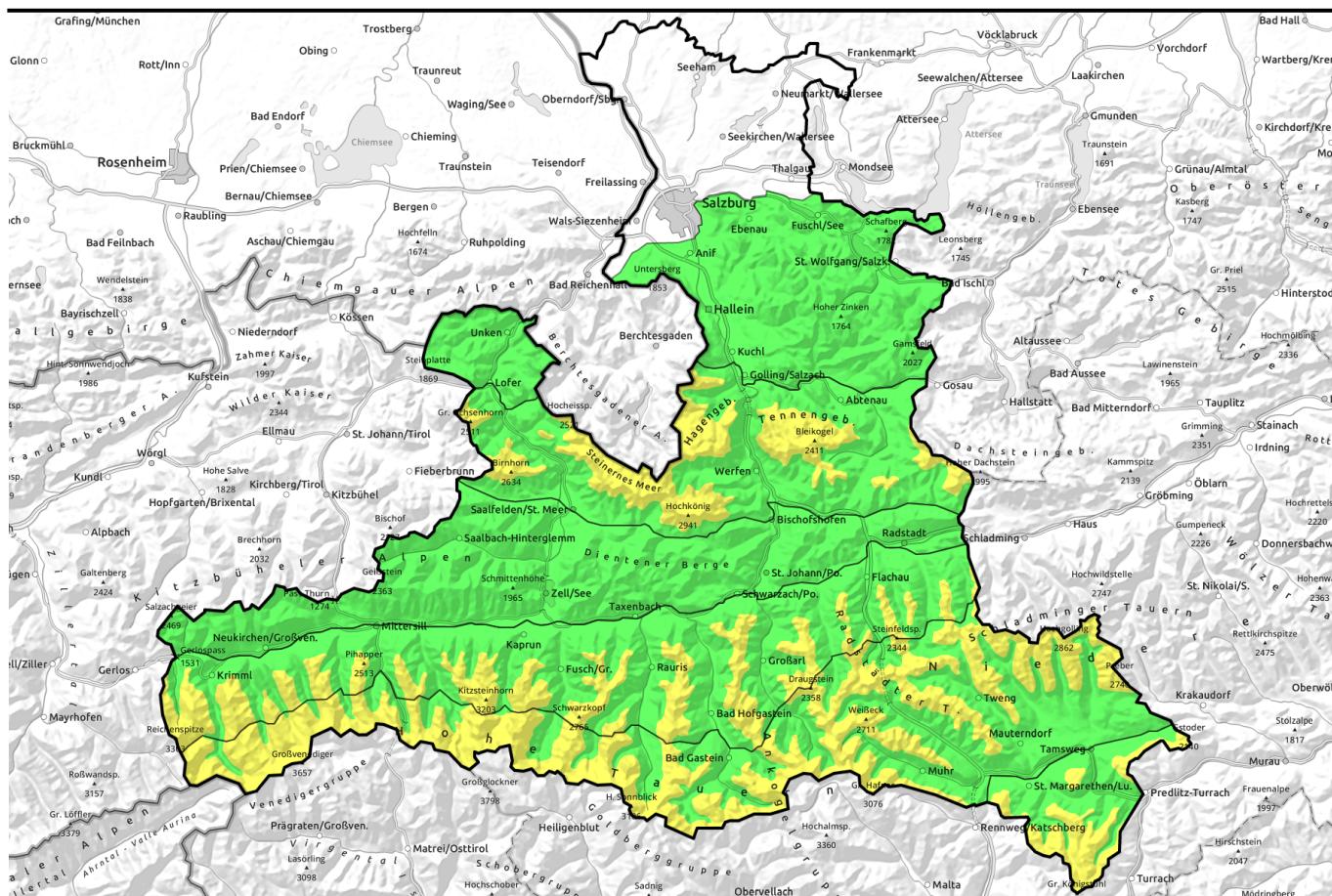
### Danger ratings



### Expositions



# 13.03.2021, afternoon



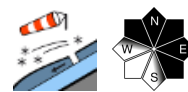
## Kammnahe Tribschneepakete in hohen und hochalpinen Lagen



Chiemgauer Alpen, Heutal, Reiteralpe, Untersbergstock, Osterhorngruppe, Gamsfeldgruppe, Pongauer Grasberge, Dientner Grasberge, Kitzbüheler Alpen, Glemmtal, Oberpinzgauer Grasberge



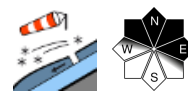
Loferer und Leoganger Steinberge, Steinernes Meer, Hochkönig, Hagengebirge, Göllstock, Tennengebirge, Gosaukamm, Großvenedigergruppe Alpenhauptkamm, Glocknergruppe Alpenhauptkamm, Goldberggruppe Alpenhauptkamm, Niedere Tauern Alpenhauptkamm, Niedere Tauern Süd, Ankogelgruppe, Muhr



2200 m

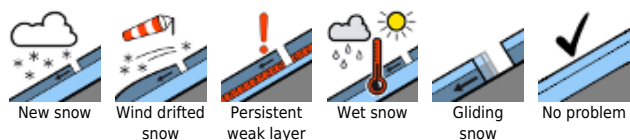


Großvenedigergruppe Nord, Glocknergruppe Nord, Goldberggruppe Nord, Niedere Tauern Nord, Nockberge

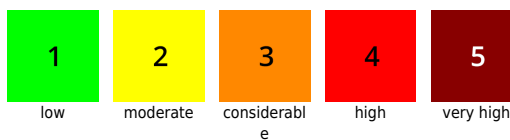


2200 m

### Avalanche problems



### Danger ratings



### Expositions

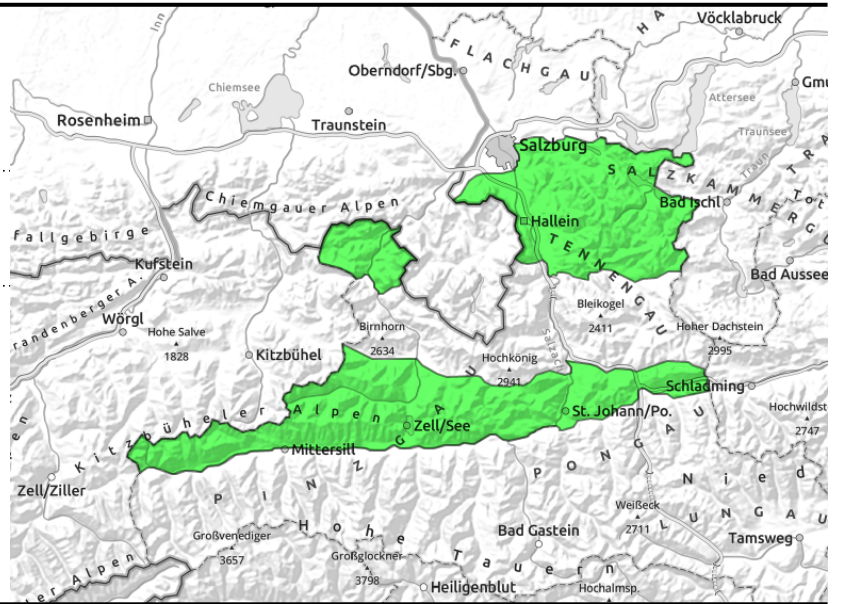


**13.03.2021**

**Chiemgauer Alpen, Heutal, Reiteralpe, Untersbergstock, Osterhorngruppe, Gamsfeldgruppe, Pongauer Grasberge, Dientner Grasberge, Kitzbüheler Alpen, Glemmtal, Oberpinzgauer Grasberge**



isolated danger zones near ridgelines, on extremely steep N-E facing slopes



## Isolated danger zones due to snowdrifts and small loose-snow avalanches

Avalanche danger is LOW. There are only very few avalanche prone locations. A small slab avalanche is most likely in extremely steep N-E facing steep terrain, e.g. at the entry point into a gully. Naturally triggered small loose-snow avalanches are possible.

### Snowpack structure

Following a period of mild temperatures, the fresh snow from mid-week is moistened, even on shady slopes, and has a frequently breakable melt-freeze crust. The old snowpack beneath this is compact and bordered by a melt-freeze crust capable of bearing loads. Near ridgelines, stormy westerly winds have generated small snowdrifts.

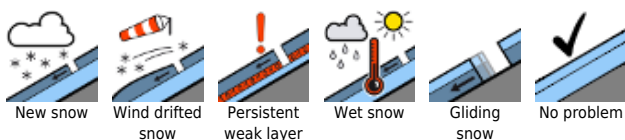
### Weather

On Saturday, high-altitude clouds will move through, intermittently blocking the sun and creating diffuse light. A moderate southerly wind will be blowing, becoming brisk in the afternoon. Temperature at 1500 m: -1 to +4 degrees; at 2000 m: -4 to -1 degree.

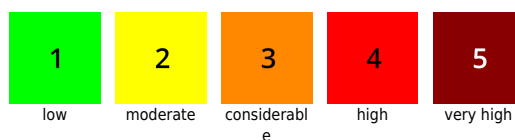
### Outlook

On Sunday, snow showers accompanied by storm-strength NW winds. The frequency of avalanche prone locations will increase at high altitude.

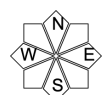
#### Avalanche problems



#### Danger ratings

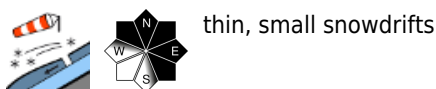
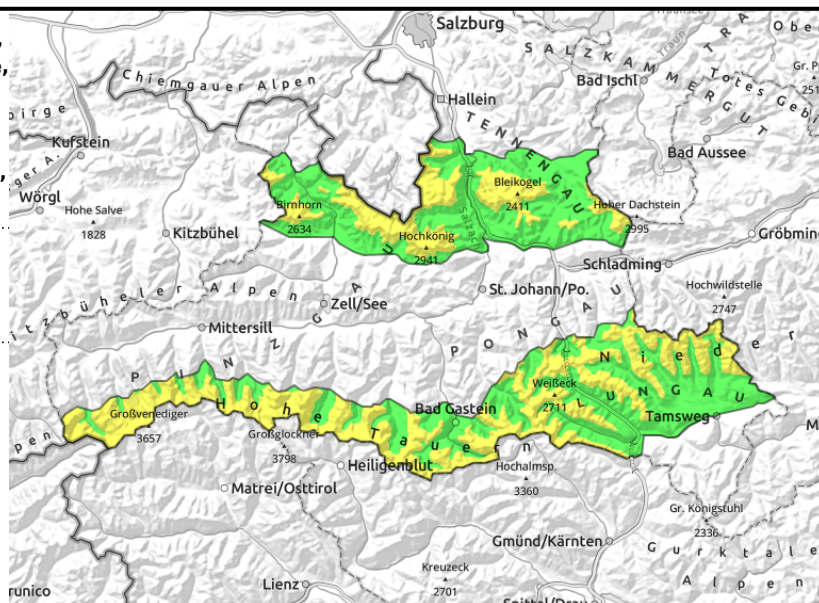


#### Expositions



**13.03.2021**

**Loferer und Leoganger Steinberge, Steinernes Meer, Hochkönig, Hagengebirge, Göllstock, Tennengebirge, Gosaukamm, Großvenedigergruppe Alpenhauptkamm, Glocknergruppe Alpenhauptkamm, Goldberggruppe Alpenhauptkamm, Niedere Tauern Alpenhauptkamm, Niedere Tauern Süd, Ankogelgruppe, Muhr**



### Caution: snowdrifts in steep terrain

Avalanche danger above 2200 m is MODERATE, below that altitude danger is LOW. A small slab can be triggered primarily by large additional loading in very steep to extremely steep terrain on N-E facing slopes and in wind-loaded gullies and bowls.

Naturally triggered small loose-snow avalanches are possible.

### Snowpack structure

Following a period of mild temperatures, the fresh snow from mid-week is at least slightly moistened up to 2300 m even on shady slopes, often has a breakable melt-freeze crust, above which on shady and wind-protected slopes the snow is still loosely-packed and dry. The old snowpack is compact, bordered by a melt-freeze crust capable of bearing loads. Near ridgelines, stormy S-W winds have generated small snowdrifts at high altitudes. As the foehn wind intensifies, the drifts on north-facing slopes will increase, particularly in the Tauern region.

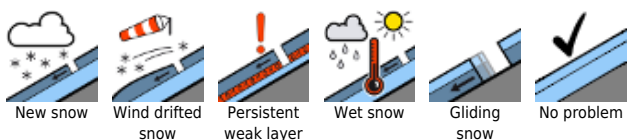
### Weather

On Saturday, high-altitude clouds will move through, intermittently blocking the sun and creating diffuse light. An increasingly strong southerly wind will be blowing, becoming stormy in the foehn lanes on the Main Tauern Ridge in the morning, later on in northern regions as well. Temperature at 2000 m: -4 to -1 degree, at 3000 m -10 degrees..

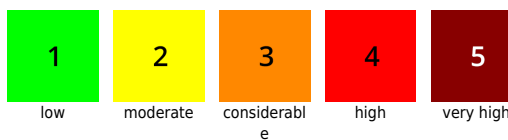
### Outlook

On Sunday, snow showers accompanied by storm-strength NW winds. The frequency of avalanche prone locations will increase at high altitude.

#### Avalanche problems



#### Danger ratings

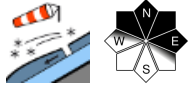


#### Expositions

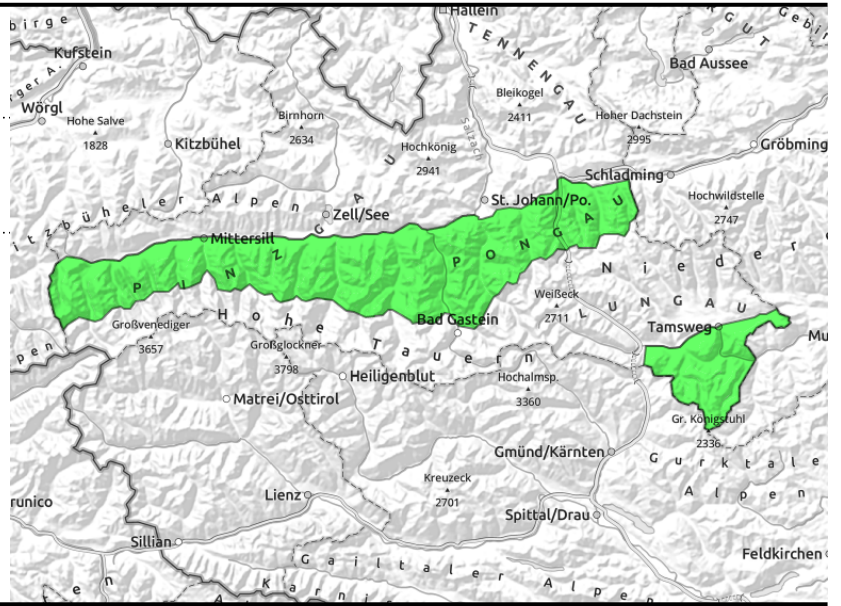


# 13.03.2021, morning

Großvenedigergruppe Nord, Glocknergruppe Nord, Goldberggruppe Nord, Niedere Tauern Nord, Nockberge



thin, small snowdrifts



## Avalanche prone locations due to snowdrifts will increase at high altitudes during the day.

Avalanche danger is initially low, then will increase to MODERATE above 2200 m during the day. Isolated medium slabs can be triggered primarily by large additional loading. Avalanche prone locations occur primarily in very steep to extremely steep terrain on N-E facing slopes and in wind-loaded gullies and bowls. Naturally triggered small loose-snow avalanches are possible.

### Snowpack structure

Following a period of mild temperatures, the fresh snow from mid-week is at least slightly moistened up to 2300 m even on shady slopes, often has a breakable melt-freeze crust, above which on shady and wind-protected slopes the snow is still loosely-packed and dry. The old snowpack is compact, bordered by a melt-freeze crust capable of bearing loads. Near ridgelines, stormy S-W winds have generated small snowdrifts at high altitudes. As the foehn wind intensifies, the drifts on north-facing slopes will increase.

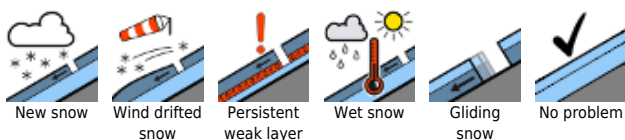
### Weather

On Saturday, high-altitude clouds will move through, intermittently blocking the sun and creating diffuse light. An increasingly strong southerly wind will be blowing, becoming stormy in the foehn lanes on the Main Tauern Ridge in the morning, later on in northern regions as well. Temperature at 2000 m: -4 to -1 degree, at 3000 m -10 degrees..

### Outlook

On Sunday, snow showers accompanied by storm-strength NW winds. The frequency of avalanche prone locations will increase at high altitude.

#### Avalanche problems



#### Danger ratings

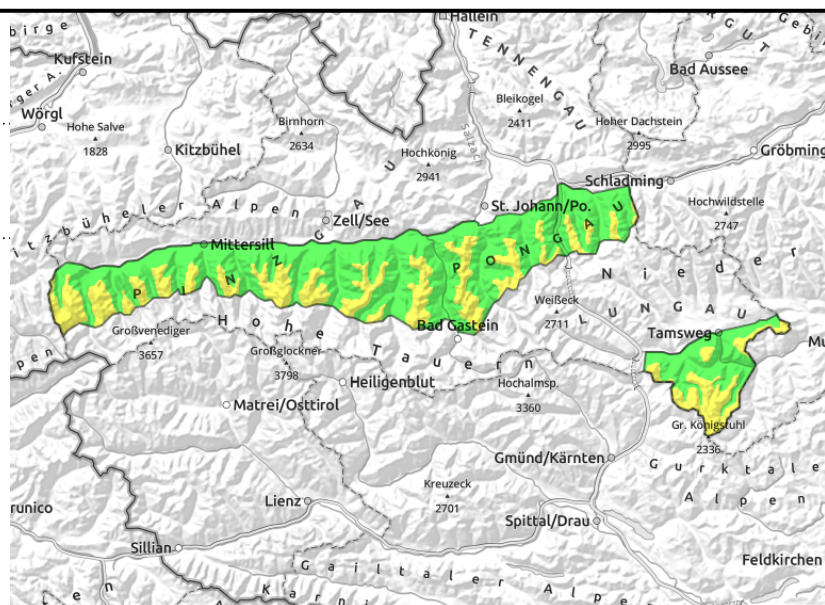
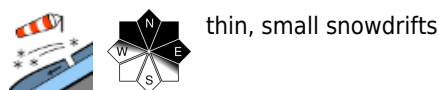


#### Expositions



# 13.03.2021, afternoon

Großvenedigergruppe Nord, Glocknergruppe Nord, Goldberggruppe Nord, Niedere Tauern Nord, Nockberge



## Avalanche prone locations due to snowdrifts will increase at high altitudes during the day.

Avalanche danger is initially low, then will increase to MODERATE above 2200 m during the day. Isolated medium slabs can be triggered primarily by large additional loading. Avalanche prone locations occur primarily in very steep to extremely steep terrain on N-E facing slopes and in wind-loaded gullies and bowls. Naturally triggered small loose-snow avalanches are possible.

### Snowpack structure

Following a period of mild temperatures, the fresh snow from mid-week is at least slightly moistened up to 2300 m even on shady slopes, often has a breakable melt-freeze crust, above which on shady and wind-protected slopes the snow is still loosely-packed and dry. The old snowpack is compact, bordered by a melt-freeze crust capable of bearing loads. Near ridgelines, stormy S-W winds have generated small snowdrifts at high altitudes. As the foehn wind intensifies, the drifts on north-facing slopes will increase.

### Weather

On Saturday, high-altitude clouds will move through, intermittently blocking the sun and creating diffuse light. An increasingly strong southerly wind will be blowing, becoming stormy in the foehn lanes on the Main Tauern Ridge in the morning, later on in northern regions as well. Temperature at 2000 m: -4 to -1 degree, at 3000 m -10 degrees..

### Outlook

On Sunday, snow showers accompanied by storm-strength NW winds. The frequency of avalanche prone locations will increase at high altitude.

Translated by Jeffrey McCabe, [www.creativtrans.com](http://www.creativtrans.com)

#### Avalanche problems



#### Danger ratings



#### Expositions

