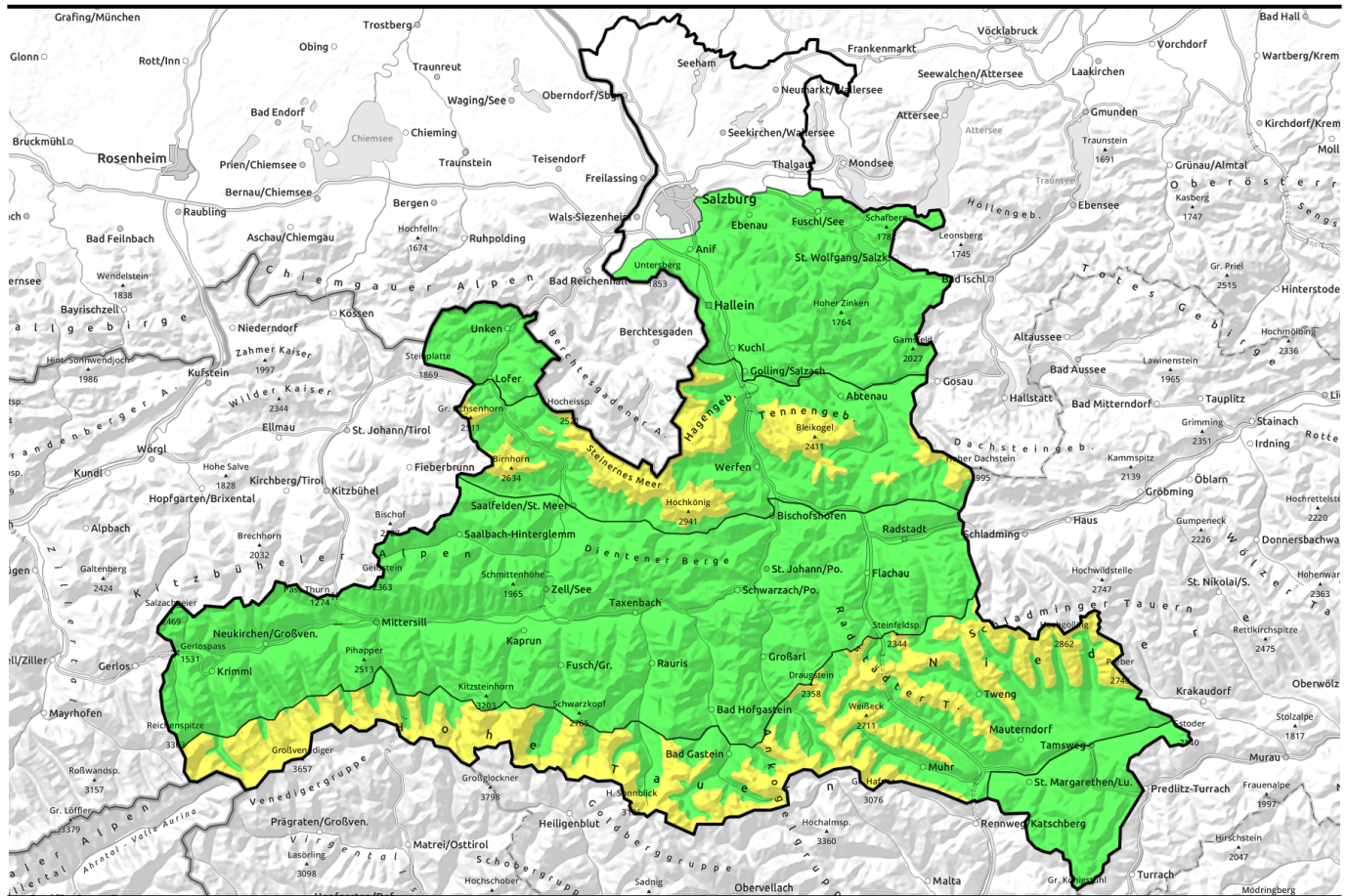


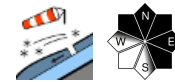
12.03.2021



Ridgeline snowdrifts at high and high-alpine altitudes

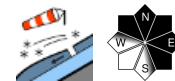


Chiemgauer Alpen, Heutal, Reiteralpe, Untersbergstock, Osterhorngruppe, Gamsfeldgruppe, Pongauer Grasberge, Niedere Tauern Nord, Dientner Grasberge, Goldberggruppe Nord, Kitzbüheler Alpen, Glemmtal, Glocknergruppe Nord, Großvenedigergruppe Nord, Oberpinzgauer Grasberge, Nockberge

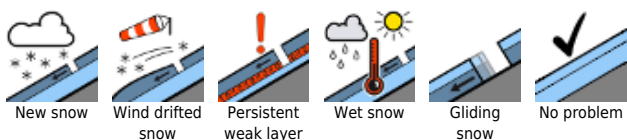


2200 m

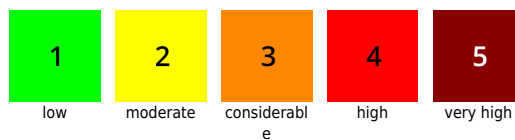
Loferer und Leoganger Steinberge, Steinernes Meer, Hochkönig, Hagengebirge, Göllstock, Tennengebirge, Gosaukamm, Großvenedigergruppe Alpenhauptkamm, Glocknergruppe Alpenhauptkamm, Goldberggruppe Alpenhauptkamm, Niedere Tauern Alpenhauptkamm, Niedere Tauern Süd, Ankogelgruppe, Muhr



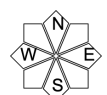
Avalanche problems



Danger ratings

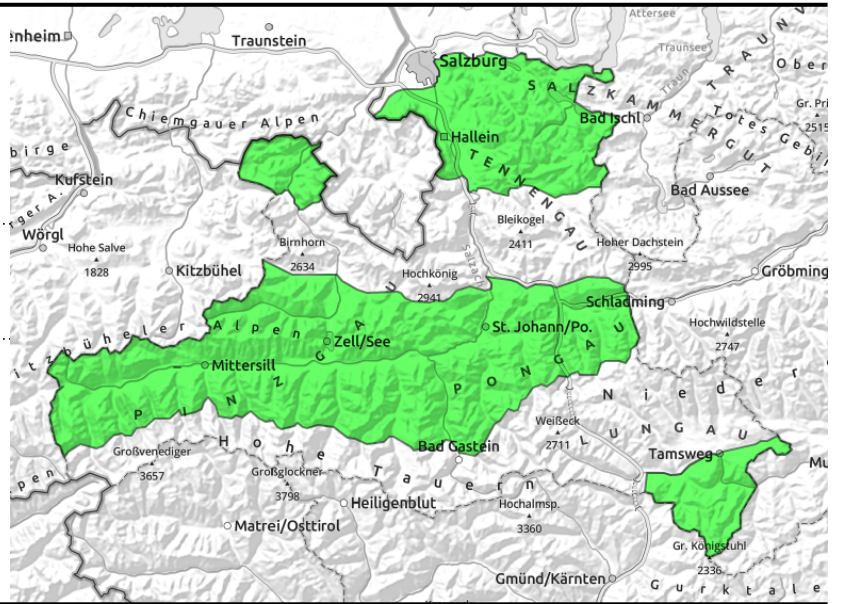


Expositions



12.03.2021

Chiemgauer Alpen, Heutal, Reiteralpe, Untersbergstock, Osterhorngruppe, Gamsfeldgruppe, Pongauer Grasberge, Niedere Tauern Nord, Dientner Grasberge, Goldberggruppe Nord, Kitzbüheler Alpen, Glemmtal, Glocknergruppe Nord, Großvenedigergruppe Nord, Oberpinzgauer Grasberge, Nockberge



isolated danger zones near ridgelines, on extremely steep N-E facing slopes

Isolated snowdrifts and small loose-snow avalanches in extremely steep terrain

Avalanche danger is LOW. There are only very few avalanche prone locations. A small slab avalanche is most likely in extremely steep N-E facing steep terrain, e.g. at the entry point into a gully. Naturally triggered small loose-snow avalanches are possible.

Snowpack structure

Compact old snowpack. Lots of (breakable) melt-freeze crusts. Some fresh snow and fresh snowdrifts.

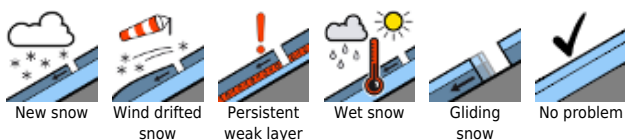
Weather

Still strong westerly winds in early morning. Little wind during the day. Visibility mostly adequate, intermittent sunshine is possible. At 2000 m: -5 degrees.

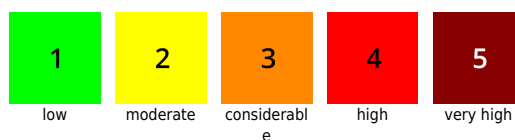
Outlook

On Saturday, sunny weather, little change. Starting on Sunday: wintery conditions, lots of wind, fresh snow.

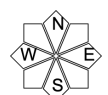
Avalanche problems



Danger ratings

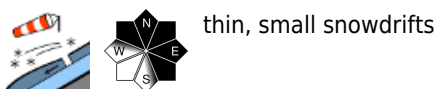
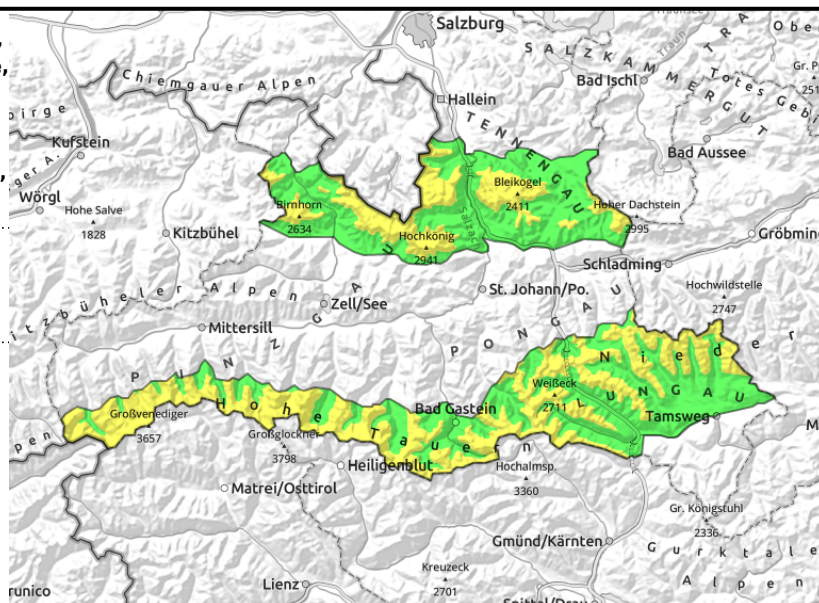


Expositions



12.03.2021

Loferer und Leoganger Steinberge, Steinernes Meer, Hochkönig, Hagengebirge, Göllstock, Tennengebirge, Gosaukamm, Großvenedigergruppe Alpenhauptkamm, Glocknergruppe Alpenhauptkamm, Goldberggruppe Alpenhauptkamm, Niedere Tauern Alpenhauptkamm, Niedere Tauern Süd, Ankogelgruppe, Muhr



Caution: snowdrifts in high and high-alpine terrain

Avalanche danger above 2200 m is MODERATE, below that altitude danger is LOW. A small slab can be triggered primarily by large additional loading in very steep to extremely steep terrain on N-E facing slopes and in wind-loaded gullies and bowls. Naturally triggered small loose-snow avalanches are possible.

Snowpack structure

The old snowpack is compact, covered by (breakable) melt-freeze crusts. Atop that is some fresh snow / snowdrifts.

Weather

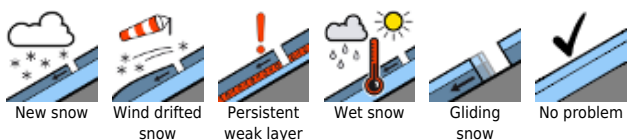
Strong westerly winds will slacken off in the morning. Visibility is mostly adequate, intermittent sunshine is expected. AT 2000 m: -5 degrees; at 3000 m: -12 degrees.

Outlook

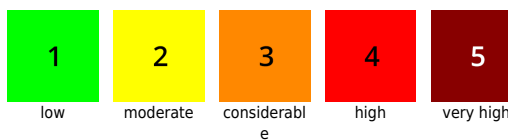
On Saturday, good visibility, little change. Starting on Sunday, strong winds, fresh snow, rising avalanche danger.

Translated by Jeffrey McCabe, www.creativtrans.com

Avalanche problems



Danger ratings



Expositions

