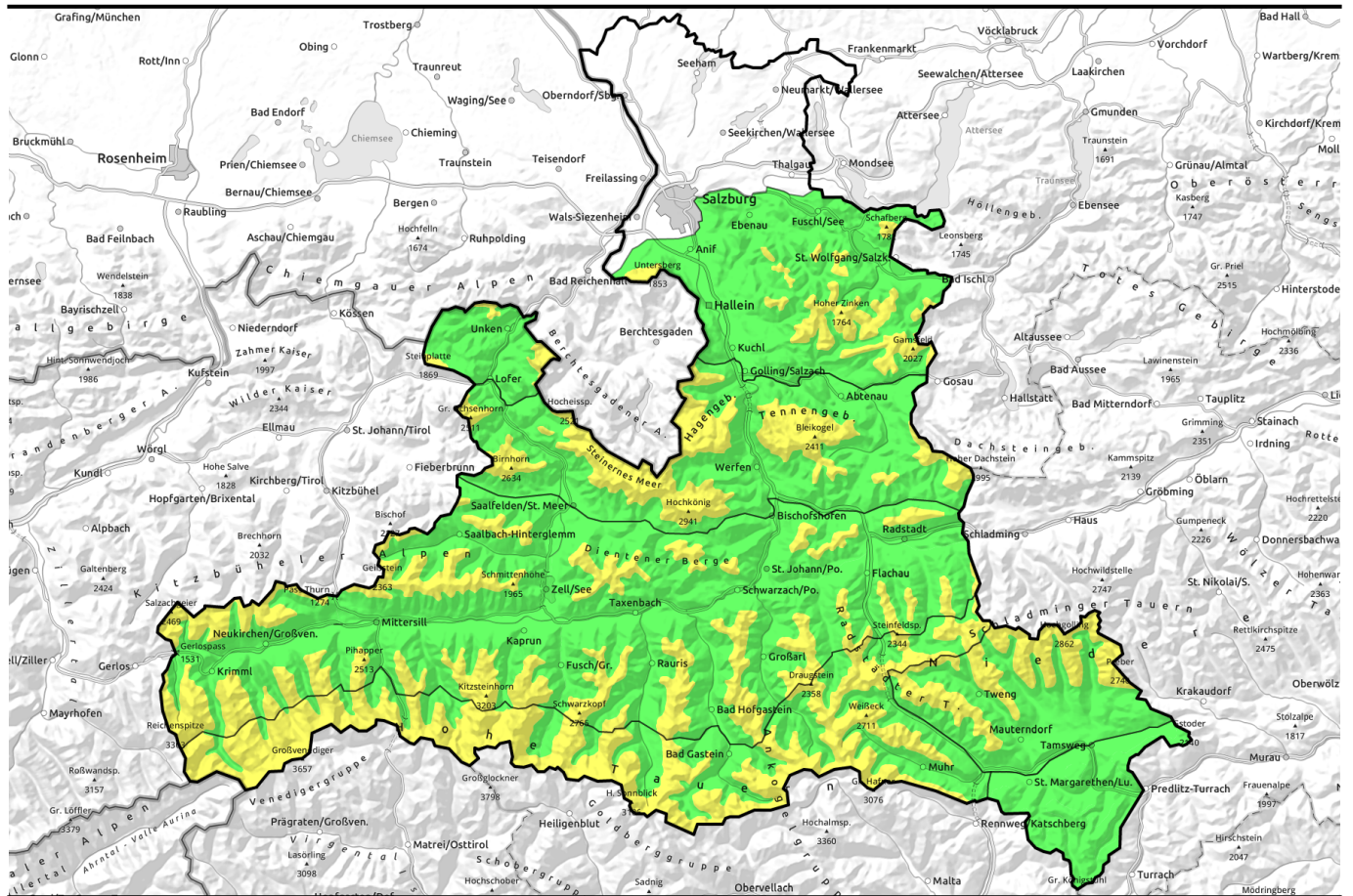


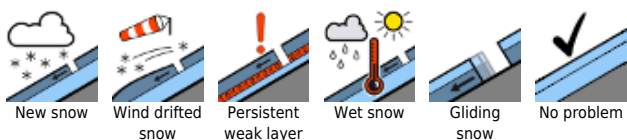
**11.03.2021**



## Beware fresh snowdrifts

	<p>1900 m Loferer und Leoganger Steinberge, Steinernes Meer, Hochkönig, Hagengebirge, Göllstock, Tennengebirge, Gosaukamm, Großvenedigergruppe Alpenhauptkamm, Glocknergruppe Alpenhauptkamm, Goldberggruppe Alpenhauptkamm, Niedere Tauern Alpenhauptkamm, Ankogelgruppe, Muhr</p>	
	<p>1500 m Chiemgauer Alpen, Heutal, Reiteralpe, Untersbergstock, Osterhorngruppe, Gamsfeldgruppe</p>	
	<p>1900 m Oberpinzgauer Grasberge, Kitzbüheler Alpen, Glemmtal, Dientner Grasberge, Pongauer Grasberge, Großvenedigergruppe Nord, Glocknergruppe Nord, Goldberggruppe Nord, Niedere Tauern Nord, Niedere Tauern Süd</p>	
	<p>Nockberge</p>	

### Avalanche problems



### Danger ratings



### Expositions

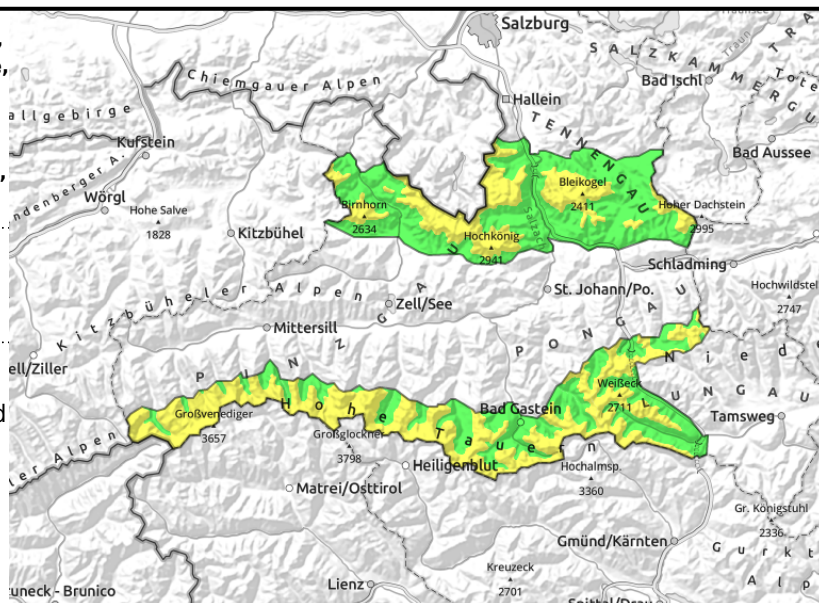


**11.03.2021**

**Loferer und Leoganger Steinberge, Steinernes Meer, Hochkönig, Hagengebirge, Göllstock, Tennengebirge, Gosaukamm, Großvenedigergruppe Alpenhauptkamm, Glocknergruppe Alpenhauptkamm, Goldberggruppe Alpenhauptkamm, Niedere Tauern Alpenhauptkamm, Ankogelgruppe, Muhr**



near ridgelines, in foehn lanes also distant from ridges, behind protruberances, thin, small snowdrifts



## Snowdrift masses and small loose-snow avalanches

Avalanche danger above 1900 m is MODERATE, below that altitude danger is LOW. Dry powder and NW winds generated snowdrifts on east-facing slopes on Wednesday, also on south-facing slopes at high altitude. Moderate-strength foehn wind will generate further snowdrifts on Thursday. Small slab avalanches can be triggered even by the weight of one single skier in very steep to extremely steep terrain, particular near ridgelines, in foehn lanes and (distant from ridges) behind protruberances in the landscape. The snowdrifts are easily recognized if visibility permits.

In steep rocky terrain, naturally triggered superficial loose-snow avalanches can release.

### Snowpack structure

Atop a stable old snowpack surface which is generally melt-freeze encrusted, 10-40 cm of loosely-packed, very dry powder was deposited in wind-protected terrain. Wind-exposed surfaces (especially in N-E aspects) have snowdrift accumulations. Potential fracture points for a slab avalanche are the snow which fell last Friday and the (now blanketed-over) surface hoar which formed on Monday night. As a result of daytime warming the snow will become superficially moist on sunny slopes, making it heavier.

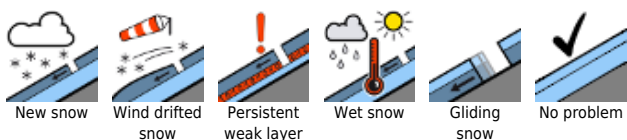
### Weather

In the morning hours, heavy cloud will pass through, possibly veiling the peaks in fog. A bit of snowfall is possible. In the afternoon, visibility will be good, the sun will make an appearance. Brisk to strong-velocity southerly winds will be blowing. Temperatures will rise significantly: at 2000 m, from -4 to +4 degrees; at 3000 m, at -4 degrees.

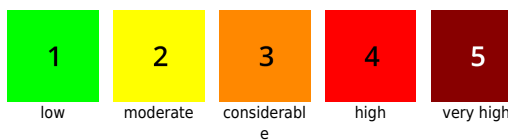
### Outlook

Wintery conditions and moderate snowdrift problem continue

#### Avalanche problems



#### Danger ratings

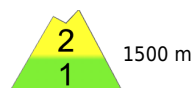


#### Expositions

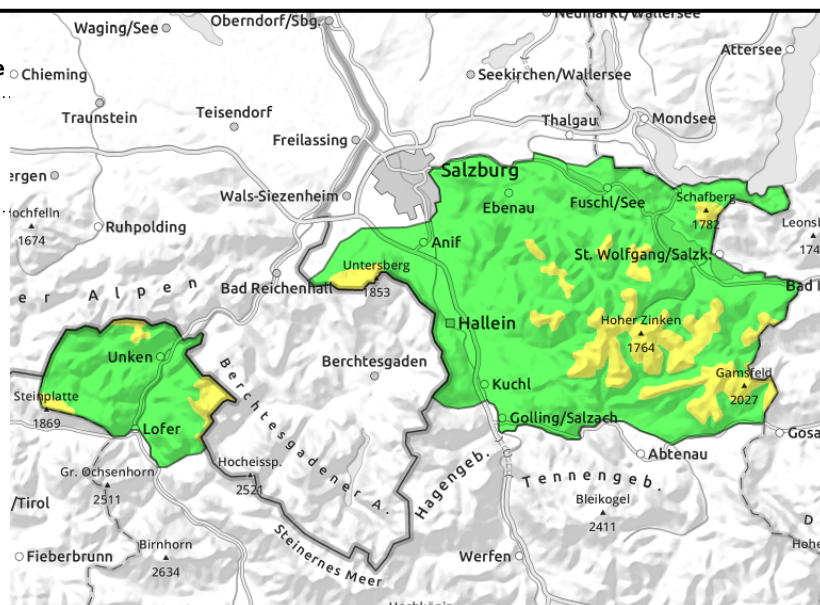


**11.03.2021**

**Chiemgauer Alpen, Heutal, Reiteralpe, Untersbergstock, Osterhorngruppe, Gamsfeldgruppe**



near ridgelines, thin, small snowdrifts



### Caution towards snowdrift masses in very steep terrain

Avalanche danger above 1500 m is MODERATE, below that altitude danger is LOW. Fresh snowdrift masses can be triggered by one single skier in steep ridgeline east-facing terrain as a small slab avalanche. Risks of falling outweigh those of being buried in snow. In steep rocky terrain, isolated naturally triggered superficial loose-snow avalanches can release.

### Snowpack structure

Snowpack is stable, a layer of cold powder on top, partly transported by W/NW winds. Starting at midday, the snowpack on sunny slopes will become moister, heavier.

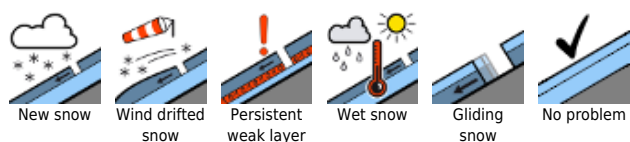
### Weather

Visibility is adequate, some sunshine is possible in the afternoon. Winds will remain mostly light. Temperatures will rise during the daytime. At 1500 m, from -3 to +6 degrees.

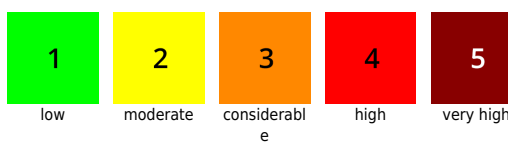
### Outlook

Little change.

#### Avalanche problems



#### Danger ratings

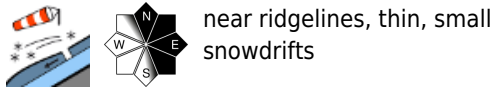
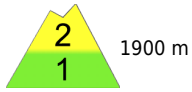


#### Expositions

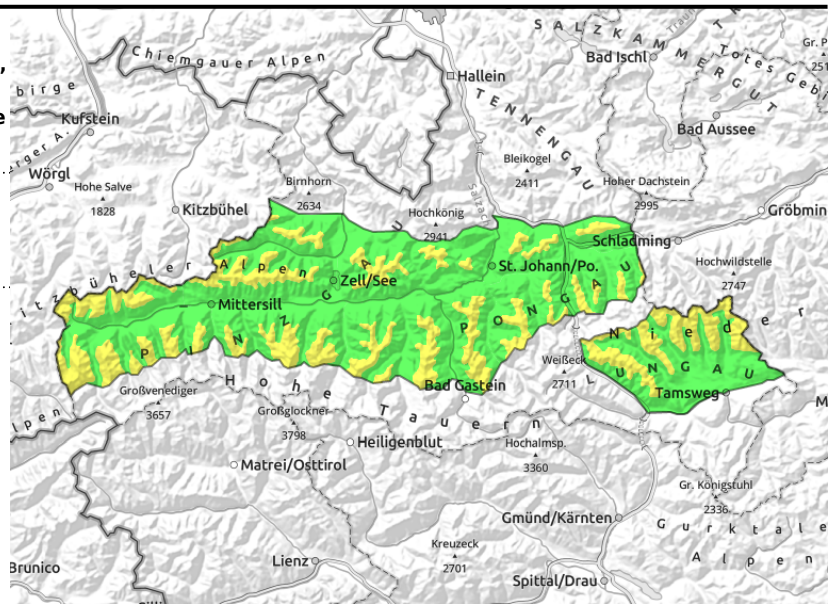


**11.03.2021**

**Oberpinzgauer Grasberge, Kitzbüheler Alpen, Glemmtal, Dientner Grasberge, Pongauer Grasberge, Großvenedigergruppe Nord, Glocknergruppe Nord, Goldberggruppe Nord, Niedere Tauern Nord, Niedere Tauern Süd**



near ridgelines, thin, small snowdrifts



## Caution towards snowdrift masses in very steep terrain

Avalanche danger above 1500 m is MODERATE, below that altitude danger is LOW. Fresh snowdrift masses can be triggered by one single skier in steep ridgeline east-facing terrain as a small slab avalanche. Risks of falling outweigh those of being buried in snow.

In steep rocky terrain, isolated naturally triggered superficial loose-snow avalanches can release.

### Snowpack structure

Snowpack is stable, a layer of cold powder on top, partly transported by W/NW winds. Starting at midday, the snowpack on sunny slopes will become moister, heavier.

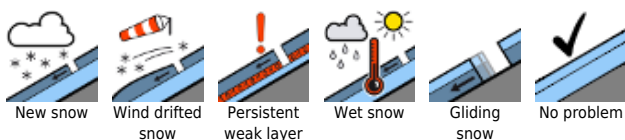
### Weather

Visibility is adequate, some sunshine is possible in the afternoon. Winds will remain mostly light. Temperatures will rise during the daytime. At 2000 m, from -4 to +4 degrees.

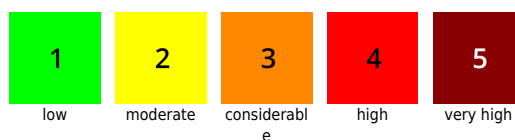
### Outlook

Little change.

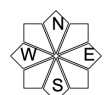
#### Avalanche problems



#### Danger ratings



#### Expositions

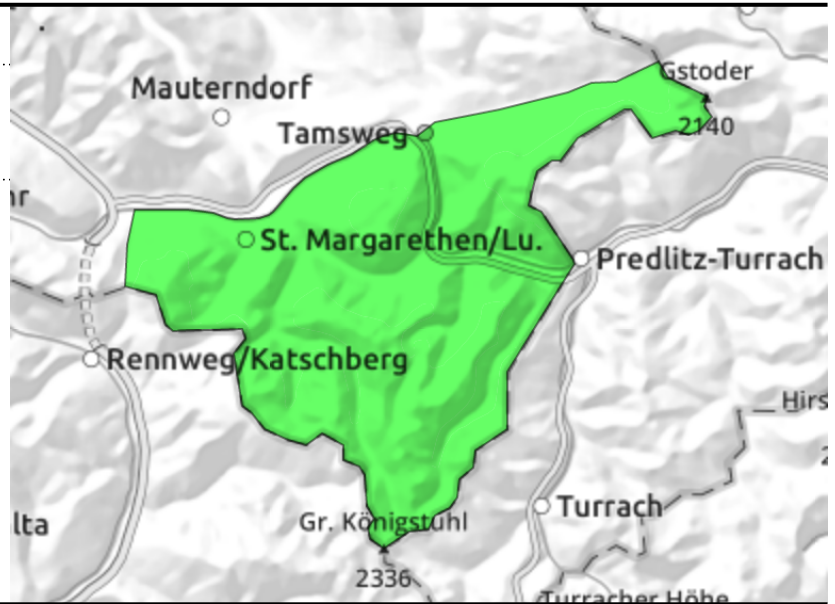


**11.03.2021**

**Nockberge**



Favourable snowpack layering



**Few avalanche prone locations**

Avalanche danger is LOW. There are hardly any danger zones. The risks of falling outweigh those of being buried in snow.

**Snowpack structure**

Little or no fresh snow lies atop varyingly hard wind-crusts and melt-freeze crusts. The old snowpack is stable.

**Weather**

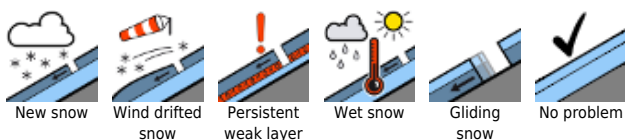
Visibility is adequate, some sunshine is possible through the cloudbanks. Winds will remain light. At 2000 m: -6 to -2 degrees.

**Outlook**

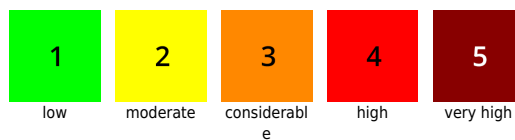
Little change.

Translated by Jeffrey McCabe, [www.creativtrans.com](http://www.creativtrans.com)

**Avalanche problems**



**Danger ratings**



**Expositions**

