

## A little fresh snow, strong NW winds



Chiemgauer Alpen, Heutal, Reiteralpe, Untersbergstock, Osterhorngruppe, Gamsfeldgruppe, Pongauer Grasberge, Dientner Grasberge, Niedere Tauern Nord



2000 m

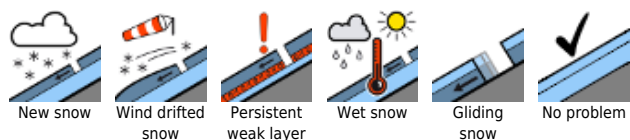
Tennenengebirge, Gosaukamm, Steinernes Meer, Hochkönig, Hagengebirge, Göllstock, Loferer und Leoganger Steinberge, Kitzbüheler Alpen, Glemmtal, Oberpinzgauer Grasberge, Großvenedigergruppe Nord, Großvenedigergruppe Alpenhauptkamm, Glocknergruppe Nord, Glocknergruppe Alpenhauptkamm, Goldberggruppe Alpenhauptkamm, Goldberggruppe Alpenhauptkamm, Ankogelgruppe, Muhr, Niedere Tauern Süd



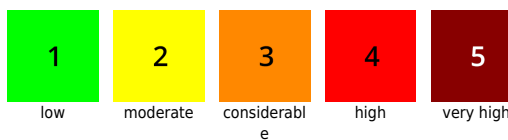
Nockberge



### Avalanche problems



### Danger ratings

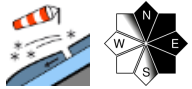


### Expositions

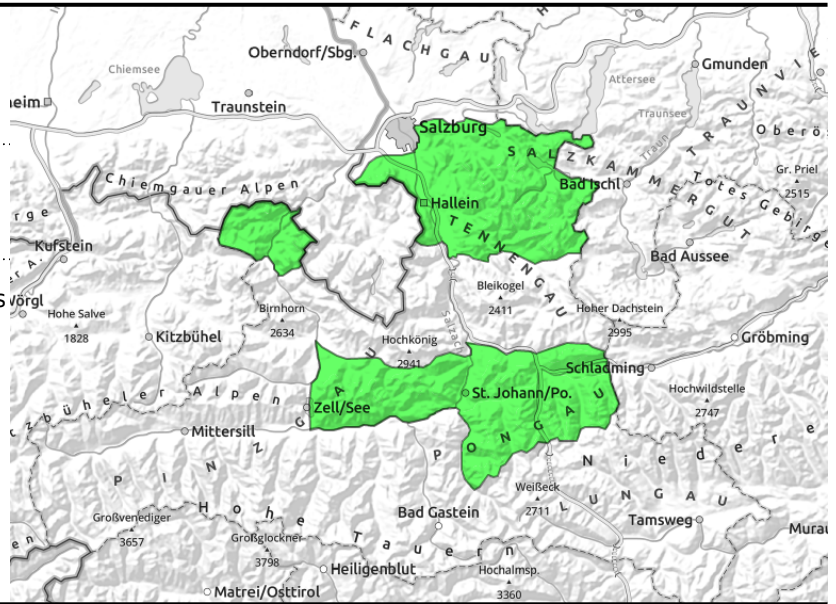


**10.03.2021**

**Chiemgauer Alpen, Heutal, Reiteralpe, Untersbergstock, Osterhorngruppe, Gamsfeldgruppe, Pongauer Grasberge, Dientner Grasberge, Niedere Tauern Nord**



thin ridgeline snowdrift patches



## Relatively stable snowpack, beware ridgeline snowdrift patches

Avalanche danger is LOW. A slab is most likely to be triggered in extremely steep ridgeline terrain where there are small snowdrift patches in N-SE aspects. Risks of falling outweigh those of being buried in snow.

### Snowpack structure

Some powder has been deposited atop the stable old snowpack. In wind-exposed and ridgeline terrain there are small, thin snowdrift patches. On sunny slopes the snow has a moist crust.

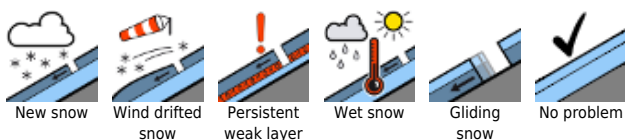
### Weather

Visibility in the morning hours and into the afternoon is generally poor, amid intermittent snowfall (only minor amounts of fresh snow expected). Brisk cold NW winds will be blowing, strongest at midday. In the afternoon visibility will improve, clouds disperse somewhat, the winds ease. At 1500 m: -5 degrees; at 2000 m: -8 degrees.

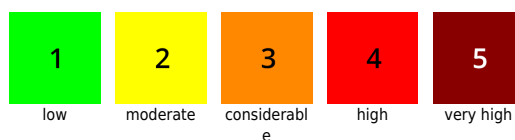
### Outlook

Little change.

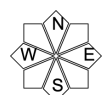
#### Avalanche problems



#### Danger ratings

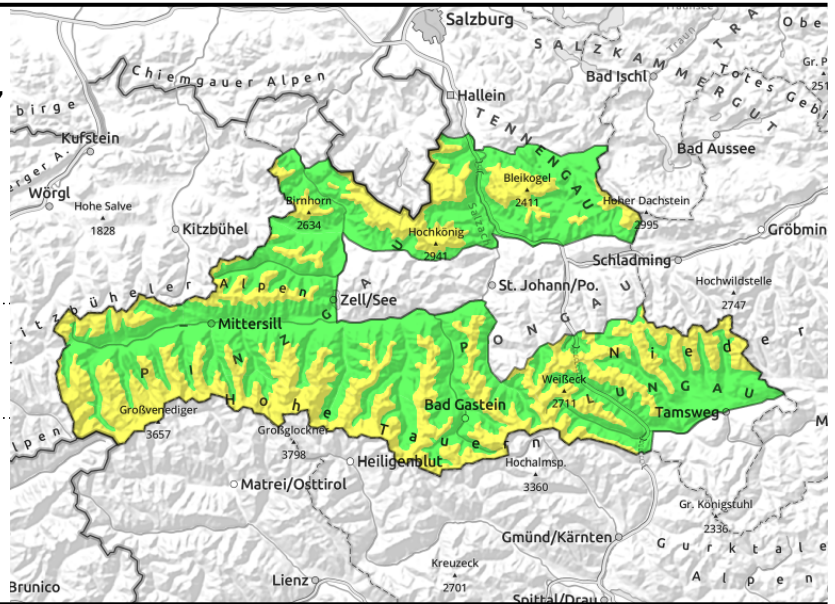


#### Expositions



**10.03.2021**

Tennengebirge, Gosaukamm, Steinernes Meer, Hochkönig, Hagengebirge, Göllstock, Loferer und Leoganger Steinberge, Kitzbüheler Alpen, Glemmtal, Oberpinzgauer Grasberge, Großvenedigergruppe Nord, Großvenedigergruppe Alpenhauptkamm, Glocknergruppe Nord, Glocknergruppe Alpenhauptkamm, Goldberggruppe Nord, Goldberggruppe Alpenhauptkamm, Niedere Tauern Alpenhauptkamm, Ankogelgruppe, Muhr, Niedere Tauern Süd



near ridgelines, thin, small snowdrift patches

## Beware snowdrift patches in steep ridgeline terrain

Avalanche danger above 2000 m is MODERATE, danger below that altitude is LOW. Caution is urged primarily in steep ridgeline terrain on NE-E-S facing slopes. Especially by large additional loading, a small-to-medium slab can be triggered there.

### Snowpack structure

Some powder has been deposited atop a stable old snowpack surface. Thin snowdrift patches have been generated by strong NW winds primarily in ridgeline terrain and in extended eastern aspects, also on south-facing slopes with ascending altitude. A slab can fracture in the fresh snow, in some places there is hoar.

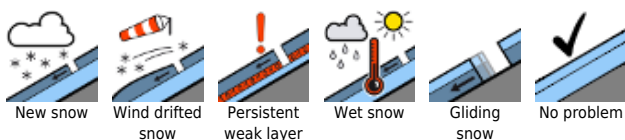
### Weather

Visibility in the morning hours and into the afternoon will be generally poor amid intermittent snowfall (up to 15 cm). Strong-to-stormy NW winds will be blowing, 70 km/hr at midday. In the afternoon visibility will improve, clouds disperse somewhat, the winds ease. At 2000 m: -8 degrees; at 3000 m: -14 degrees.

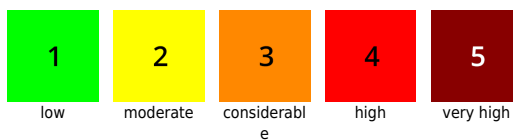
### Outlook

As southerly foehn wind arises, fresh snowdrift accumulations will be generated on north-facing slopes. However there is not much snow to be transported and the foehn phase is expected to be brief. Therefore: MODERATE danger.

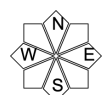
#### Avalanche problems



#### Danger ratings



#### Expositions

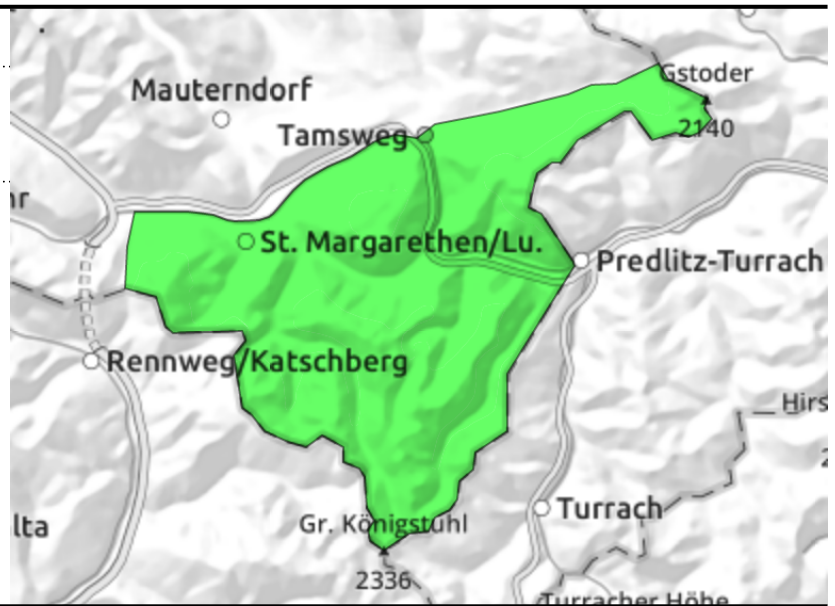


**10.03.2021**

**Nockberge**



Favourable layering



**Very few danger zones**

Avalanche danger is LOW. Hardly any avalanche prone locations, risks of falling outweigh those of being buried in snow.

**Snowpack structure**

Very little if any fresh snow has been deposited atop varying hard wind-crusts and melt-freeze crusts. The old snowpack is stable.

**Weather**

Cold NW winds. Visibility is adequate. At 2000 m: -7 degrees.

**Outlook**

Little change.

Translated by Jeffrey McCabe, [www.creativtrans.com](http://www.creativtrans.com)

**Avalanche problems**



New snow



Wind drifted snow



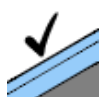
Persistent weak layer



Wet snow



Gliding snow



No problem

**Danger ratings**



1

low



2

moderate



3

considerable



4

high



5

very high

**Expositions**

