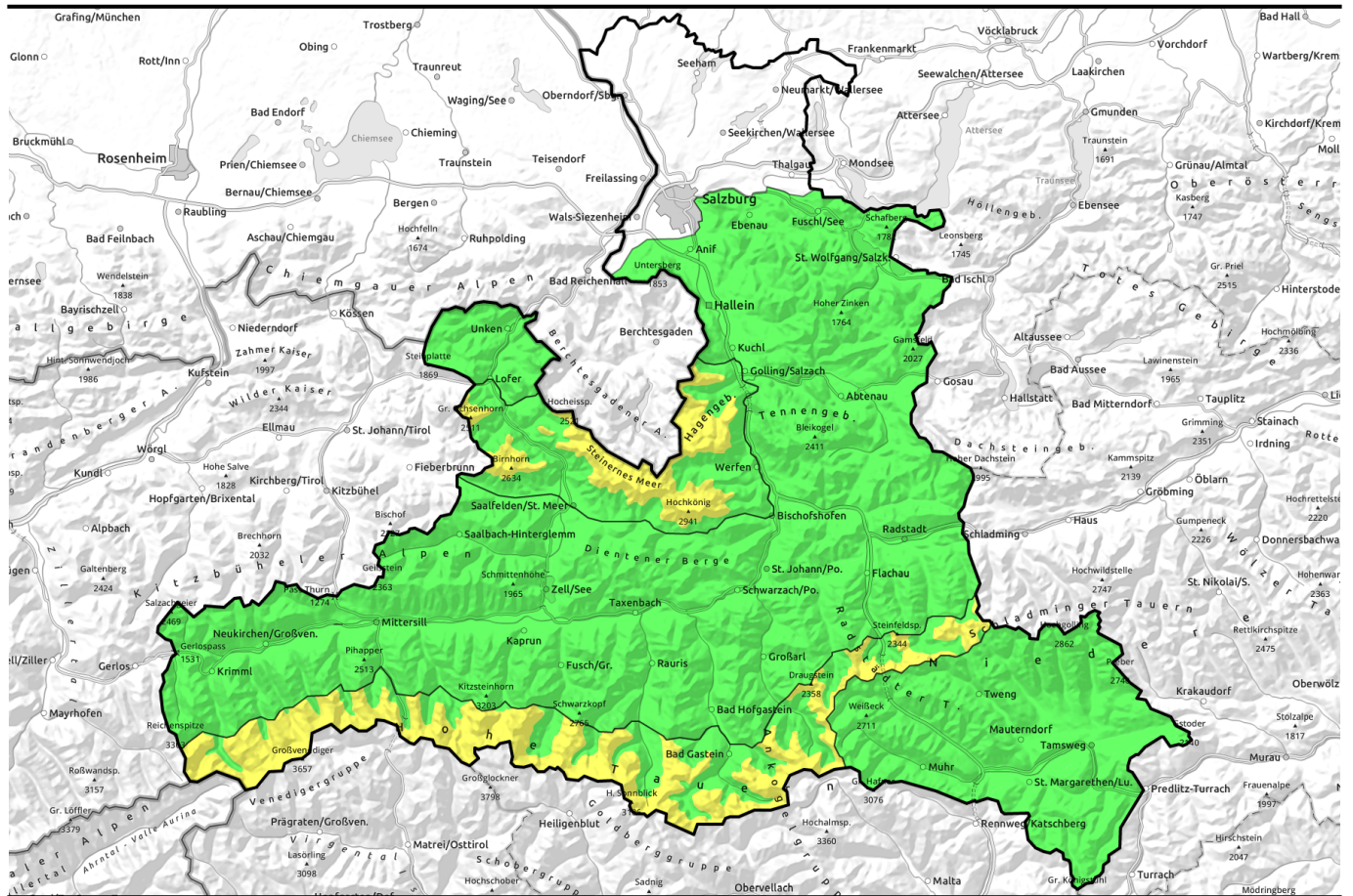



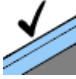
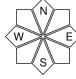
08.03.2021




Ongoing favourable conditions. Fresh snow atop hard base.

- 



Niedere Tauern Süd, Ankogelgruppe, Muhr, Nockberge





- 

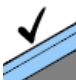

2000 m

Steinernes Meer, Hochkönig, Hagengebirge, Göllstock, Loferer und Leoganger Steinberge, Großvenedigergruppe Alpenhauptkamm, Glocknergruppe Alpenhauptkamm, Goldberggruppe Alpenhauptkamm, Niedere Tauern Alpenhauptkamm

- 

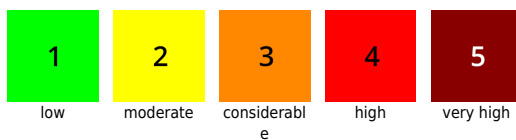
Chiemgauer Alpen, Heutal, Reiteralpe, Untersbergstock, Osterhorngruppe, Gamsfeldgruppe, Tennengebirge, Gosaukamm, Pongauer Grasberge, Goldberggruppe Nord, Dientner Grasberge, Kitzbüheler Alpen, Glemmtal, Glocknergruppe Nord, Großvenedigergruppe Nord, Oberpinzgauer Grasberge, Niedere Tauern Nord

Avalanche problems



Danger ratings



Expositions

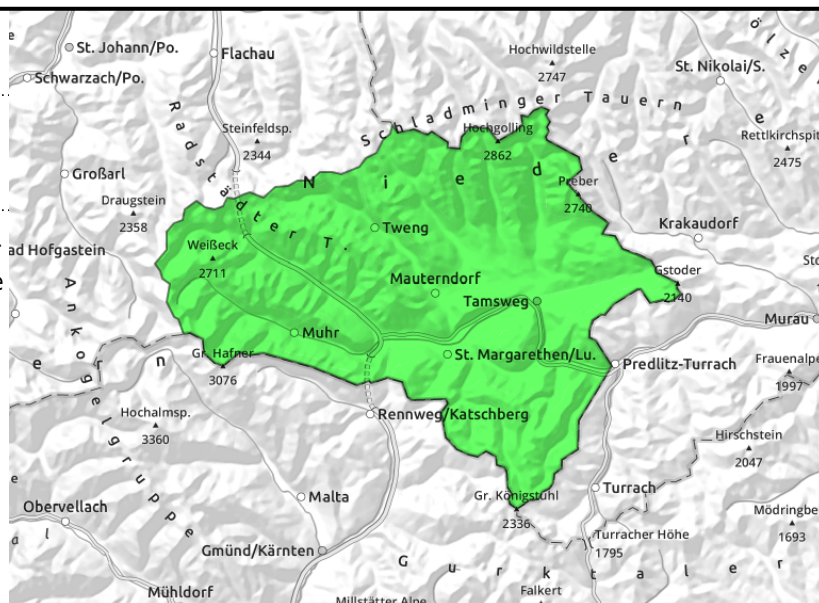


08.03.2021

Niedere Tauern Süd, Ankogelgruppe, Muhr, Nockberge



favourable layering, only minor fresh snow atop hardened base



Few avalanche prone locations. Favourable conditions.

Avalanche danger is LOW. Few danger zones, more frequent near Tauern Main Ridge than in the south, occur in steep ridgeline terrain and in very steep gullies, the risks of falling on hard surfaces outweigh those of being buried in snow. On sun-drenched and rocky steep slopes, small superficial fresh-snow avalanches are possible. Glide-snow avalanches are no longer likely, most have already discharged.

Snowpack structure

The last weather front brought only minor fresh snow apart from Main Tauern Ridge. It was deposited atop hard wind-crusted and melt-freeze crusts. Since there was so little snow, winds played no major part in generating snowdrifts. The old snowpack is stable, the inner layers are blanketed-over sufficiently.

Weather

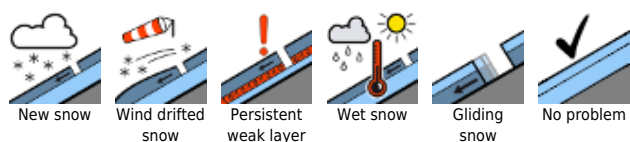
On **Monday**, rather sunny right from the start. From Tauern regions a few clouds could persist, further south it will be mostly clear. Wintery cold temperatures amid strong northerly winds. At 2000 m: -7 to -4 degrees; at 3000 m: -12 degrees.

On **Tuesday**, diffuse light, heavy cloud for a time, the higher peaks could be shrouded. In the afternoon, brisk NW winds (30-40 km/hr), light snowfall is possible. At 2000 m: -8 degrees; at 3000 m: -14 degrees.

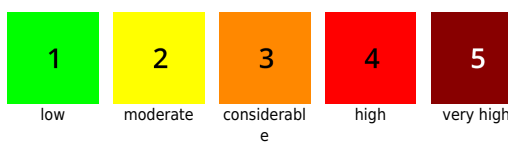
Outlook

No significant change is expected in the next few days. We are still closer to winter than to firm snow.

Avalanche problems



Danger ratings





Expositions

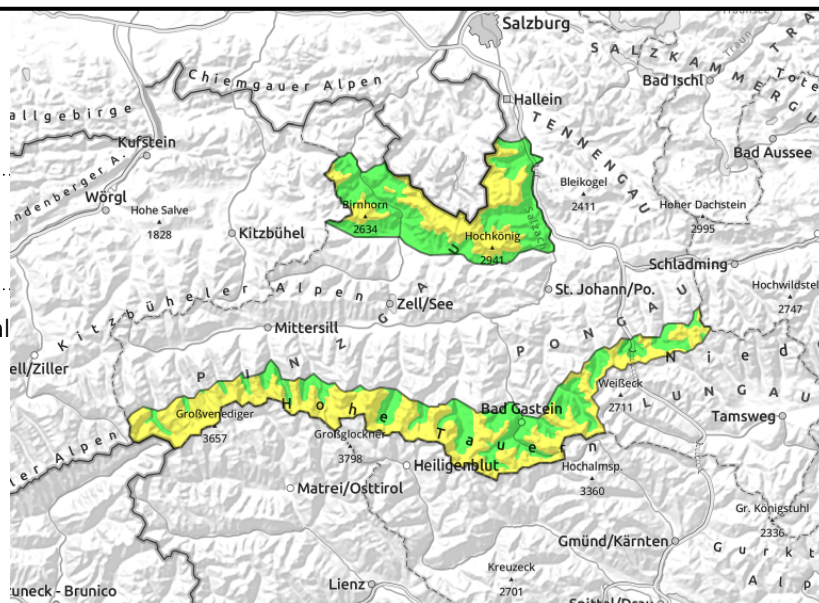


08.03.2021

Steinernes Meer, Hochkönig, Hagengebirge, Göllstock, Loferer und Leoganger Steinberge, Großvenedigergruppe Alpenhauptkamm, Glocknergruppe Alpenhauptkamm, Goldberggruppe Alpenhauptkamm, Niedere Tauern Alpenhauptkamm



  ridgeline drifts small, superficial slabs possible above 2000 m



Circumvent ridgeline drifts, otherwise great conditions

Avalanche danger above 2000 m is MODERATE, below that altitude danger is LOW. Avalanche prone locations occur in steep ridgeline terrain, mainly in NE-E-S aspects. There, **isolated superficial slabs can be triggered**, small-to-medium size, some even triggerable by one single person. **Danger zones are easily recognized.** Where there is little wind, conditions are still quite favourable. Naturally triggered avalanches are possible in sunny, rocky steep terrain (small-to-medium sized) loose-snow.

Snowpack structure

Fresh dry powder snow (10-20 cm, locally up to 30 cm) was deposited atop varyingly hard melt-freeze or wind crusts. Bonding between the layers is generally good. On south-facing slopes up to 2000 m there is a thin crust, not a big disturbance. In exposed and ridgeline terrain small snowdrifts have been generated. The old snowpack beneath them is stable. Inside the snowpack are weak layers, well blanketed over by hardened layers.

Weather

On **Monday**, rather sunny right from the start. From Tauern regions a few clouds could persist, further south it will be mostly clear. Wintery cold temperatures amid strong northerly winds. At 2000 m: -7 to -4 degrees; at 3000 m: -12 degrees.

On **Tuesday**, diffuse light, heavy cloud for a time, the higher peaks could be shrouded. In the afternoon, brisk NW winds (30-40 km/hr), light snowfall is possible. At 2000 m: -8 degrees; at 3000 m: -14 degrees.

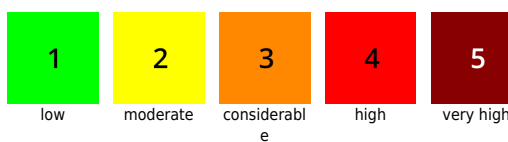
Outlook

No significant change is expected in the next few days. We are still closer to winter than to firn snow.

Avalanche problems



Danger ratings



Expositions

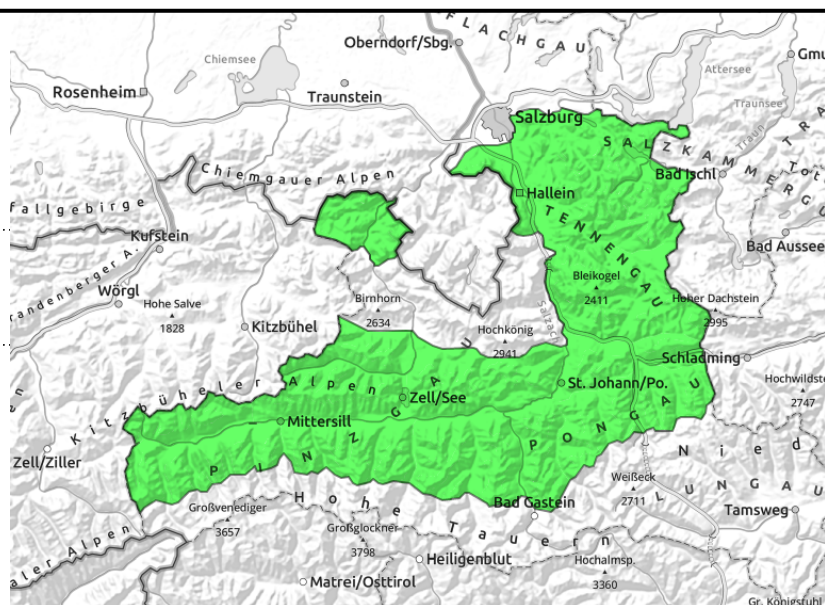


08.03.2021

Chiemgauer Alpen, Heutal, Reiteralpe, Untersbergstock, Osterhorngruppe, Gamsfeldgruppe, Tennengebirge, Gosaukamm, Pongauer Grasberge, Goldberggruppe Nord, Dientner Grasberge, Kitzbüheler Alpen, Glemmtal, Glocknergruppe Nord, Großvenedigergruppe Nord, Oberpinzgauer Grasberge, Niedere Tauern Nord



mostly loose powder, heed
ridgeline snowdrift patches



Good conditions, heed steep ridgeline slopes

Avalanche danger is LOW. Avalanche prone locations hardly exist. Caution necessary on extremely steep ridgeline slopes where **small snowdrift patches** have been deposited (N-SE). These danger zones are easily recognized. **Risks of falling outweigh those of being buried in snow.**

Naturally triggered loose-snow avalanches are possible on sunny rocky steep slopes (small-to-medium).

Snowpack structure

Fresh dry powder snow (10-20 cm, locally up to 30 cm) was deposited atop varyingly hard melt-freeze or wind crusts. Bonding between the layers is generally good. On south-facing slopes up to 2000 m there is a thin crust, not a big disturbance. In exposed and ridgeline terrain small snowdrifts have been generated. The old snowpack beneath them is stable. Inside the snowpack are weak layers, well blanketed over by hardened layers.

Weather

On **Monday**, rather sunny right from the start. From Tauern regions a few clouds could persist, further south it will be mostly clear. Wintery cold temperatures amid strong northerly winds. At 2000 m: -7 to -4 degrees; at 3000 m: -12 degrees.

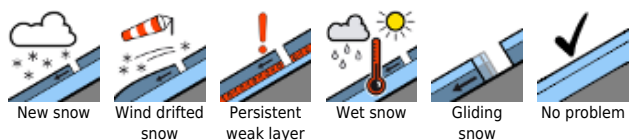
On **Tuesday**, diffuse light, heavy cloud for a time, the higher peaks could be shrouded. In the afternoon, brisk NW winds (20-30 km/hr), light snowfall is possible. At 2000 m: -8 degrees; at 3000 m: -14 degrees.

Outlook

No significant change is expected in the next few days. We are still closer to winter than to firn snow.

Translated by Jeffrey McCabe, www.creativtrans.com

Avalanche problems



Danger ratings



Expositions

