

Limited avalanche prone locations from fresh snowdrifts

	<p>forestline Osterhorngruppe, Gamsfeldgruppe, Chiemgauer Alpen, Heutal, Reiteralpe, Untersbergstock, Oberpinzgauer Grasberge, Großvenedigergruppe Nord, Großvenedigergruppe Alpenhauptkamm, Glocknergruppe Nord, Glocknergruppe Alpenhauptkamm, Loferer und Leoganger Steinberge, Steinernes Meer, Hochkönig, Hagengebirge, Göllstock, Tennengebirge, Gosaukamm</p>	
	<p>1900 m Pongauer Grasberge, Dientner Grasberge, Kitzbüheler Alpen, Glemmtal, Goldberggruppe Nord, Goldberggruppe Alpenhauptkamm, Niedere Tauern Alpenhauptkamm, Niedere Tauern Nord</p>	
	<p>Nockberge, Ankogelgruppe, Muhr, Niedere Tauern Süd</p>	

Avalanche problems



Danger ratings

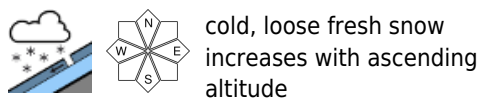
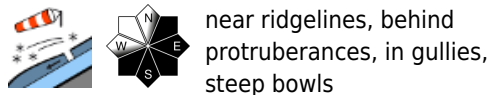
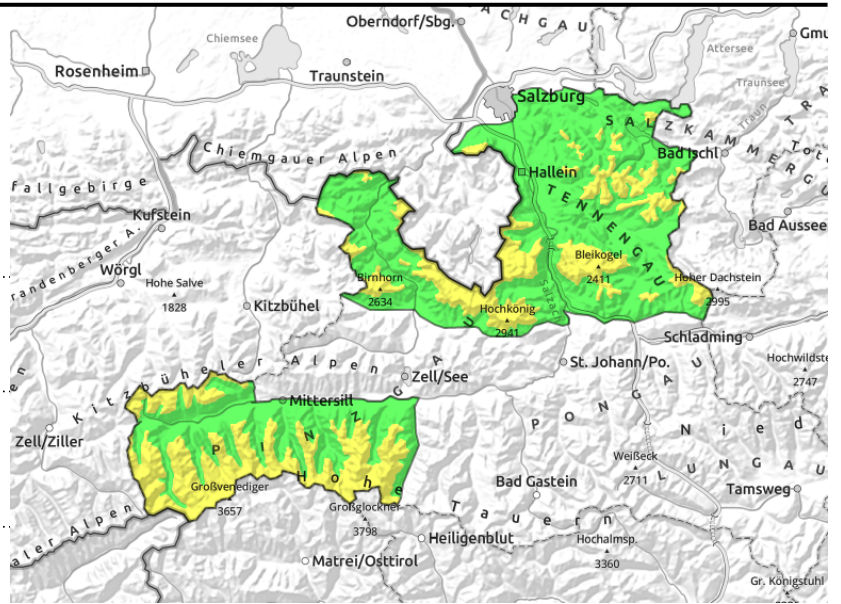


Expositions



06.03.2021

Osterhorngruppe, Gamsfeldgruppe, Chiemgauer Alpen, Heutal, Reiteralpe, Untersbergstock, Oberpinzgauer Grasberge, Großvenedigergruppe Nord, Großvenedigergruppe Alpenhauptkamm, Glocknergruppe Nord, Glocknergruppe Alpenhauptkamm, Loferer und Leoganger Steinberge, Steinernes Meer, Hochkönig, Hagengebirge, Göllstock, Tennengebirge, Gosaukamm



Circumvent fresh snowdrifts. Loose fresh snow atop a hard base in wind-protected terrain.

Danger above the timberline is MODERATE, below that altitude LOW. Avalanche prone locations occur in steep ridgeline terrain in steep gullies and bowls, increasingly often in NE-E-SW aspects. Triggering a small-to-medium slab avalanche in fresh snowdrifts is possible even by minimum additional loading. In wind-protected terrain conditions are favourable, danger zones are limited to extremely steep terrain.

Isolated naturally triggered avalanches are possible in steep sunny rocky terrain - small to medium size.

Snowpack structure

Cold fresh snow (10-20 cm, locally up to 30 cm) was deposited on wind crusts and melt-freeze crusts of varying thickness, on south-facing slopes below 1600 m on bare ground, on north-facing slopes above 1800 m atop faceted, dry powder. Bonding to the base varies, for the most part it is adequate. In wind-exposed terrain above the timberline, intermittently strong W/NW winds transported the snow in phases. Potential fracture lines for slabs are likeliest in blanketed-over fresh powder (limited spread) and on shady slopes also in the faceted old snow.

The old snowpack has settled well and is generally stable. More deeply embedded weak layers of faceted crystals are usually well covered.

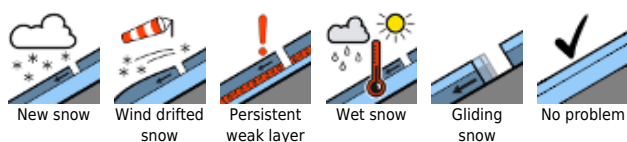
Weather

Sunshine in the mountains right from the start on Saturday. Early residual fog will recede, temperatures will rise, winds will ease. At 2000 m: -10 to -5 degrees, at 3000 m: -13 to -10 degrees.

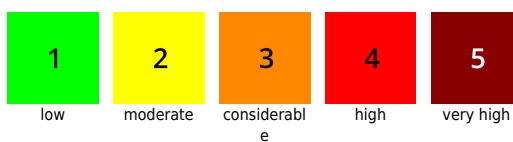
Outlook

Local snowdrifts on steep leeward slopes should be circumvented on Sunday. Moderate snowdrift problem at high altitudes. On steep sunny slopes the last fresh snow is moist up to intermediate altitudes. Thus, a daytime danger cycle of wet-snow avalanches (maximum magnitude 2) in extremely steep zones.

Avalanche problems



Danger ratings

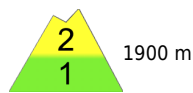




Expositions

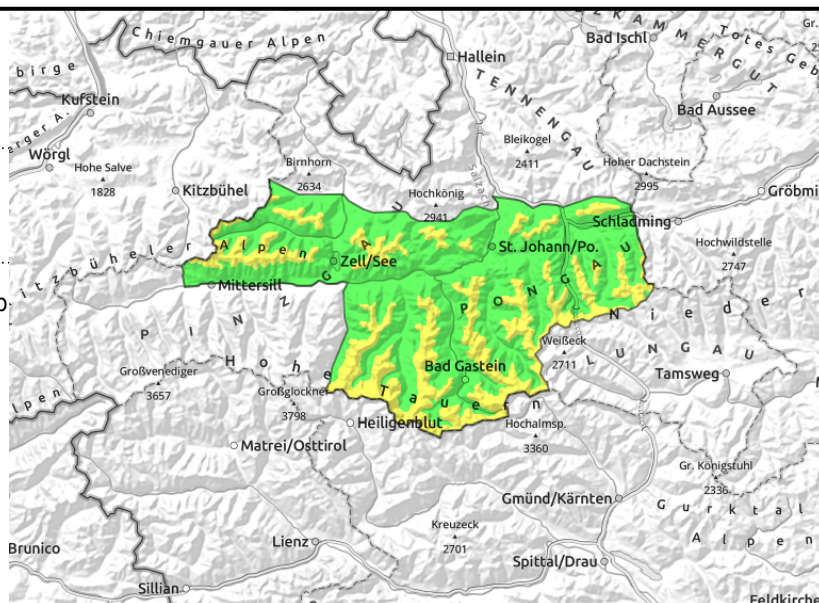


06.03.2021

Pongauer Grasberge, Dientner Grasberge, Kitzbüheler Alpen, Glemmtal, Goldberggruppe Nord, Goldberggruppe Alpenhauptkamm, Niedere Tauern Alpenhauptkamm, Niedere Tauern Nord



  near ridgelines, in gullies, steep bowls



Circumvent fresh snowdrifts. Loose fresh snow atop hard base in wind-protected terrain.

Danger above the timberline is MODERATE, below that altitude LOW. Avalanche prone locations occur in steep ridgeline terrain in steep gullies and bowls, increasingly often in NE-E-SW aspects. Triggering a small-to-medium slab avalanche in fresh snowdrifts is possible even by minimum additional loading. In wind-protected terrain conditions are favourable, danger zones are limited to extremely steep terrain.

Isolated naturally triggered avalanches are possible in steep sunny rocky terrain - small to medium size.

Snowpack structure

Cold fresh snow (10-20 cm, locally up to 30 cm) was deposited on wind crusts and melt-freeze crusts of varying thickness, on south-facing slopes below 1600 m on bare ground, on north-facing slopes above 1800 m atop faceted, dry powder. Bonding to the base varies, for the most part it is adequate. In wind-exposed terrain above the timberline, intermittently strong W/NW winds transported the snow in phases. Potential fracture lines for slabs are likeliest in blanketed-over fresh powder (limited spread) and on shady slopes also in the faceted old snow.

The old snowpack has settled well and is generally stable. More deeply embedded weak layers of faceted crystals are usually well covered.

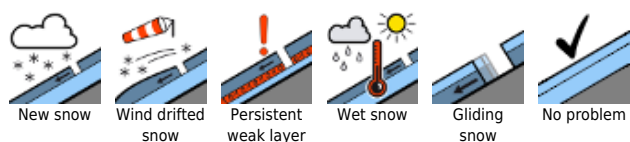
Weather

Sunshine in the mountains right from the start on Saturday. Early residual fog will recede, temperatures will rise, winds will ease. At 2000 m: -10 to -5 degrees, at 3000 m: -13 to -10 degrees.

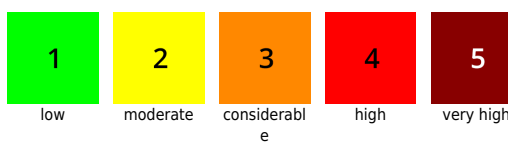
Outlook

Local snowdrifts on steep leeward slopes should be circumvented on Sunday. Moderate snowdrift problem at high altitudes. On steep sunny slopes the last fresh snow is moist up to intermediate altitudes. Thus, a daytime danger cycle of wet-snow avalanches (maximum magnitude 2) in extremely steep zones.

Avalanche problems



Danger ratings



Expositions



06.03.2021

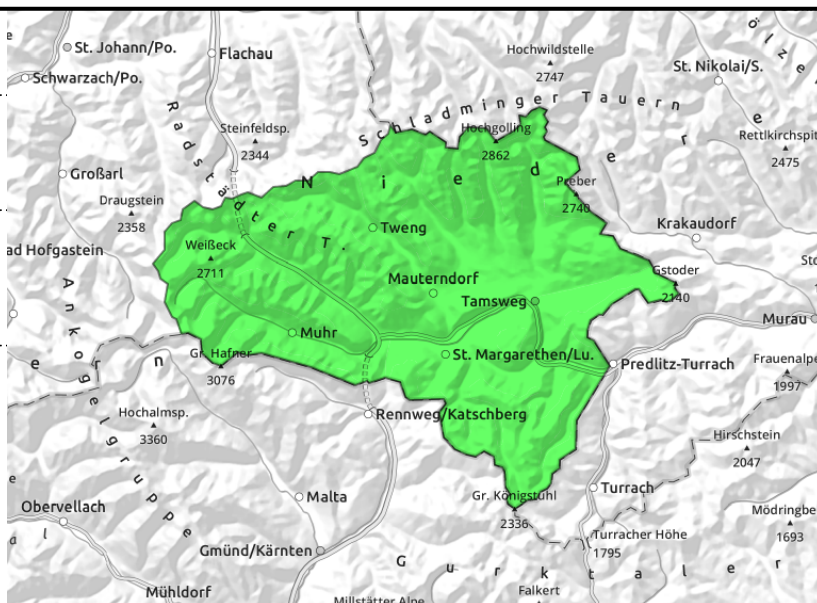
Nockberge, Ankogelgruppe, Muhr, Niedere Tauern Süd



favourable snowpack layering, only thin layer of fresh snow atop hard base



thin, small-spread snowdrifts increasingly frequent near Tauern Main Ridge



Minor snowfall atop stable old snowpack surface

Danger of avalanches is LOW. Isolated avalanche prone locations - more frequent near Main Tauern Ridge than in the south - occur in extremely steep ridgeline terrain and in very steep gullies, mostly is the risk of falling on the hard surfaces greater than avalanche danger. Glide-snow avalanches in steep grassy terrain are unlikely, most avalanche prone locations have already discharged.

Snowpack structure

Minor snowfall was deposited on wind crusts and melt-freeze crusts of varying thickness, on south-facing slopes below 1600 m on bare ground, on north-facing slopes above 1800 m atop faceted, dry powder. Bonding to the base varies, for the most part it is adequate. In wind-exposed terrain above the timberline, intermittently strong W/NW winds transported the snow in phases. Potential fracture lines for slabs are likeliest in blanketed-over fresh powder (limited spread) and on shady slopes also in the faceted old snow. The old snowpack has settled well and is generally stable.

Weather

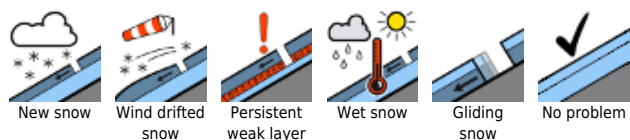
On Saturday in the Lungau mountains, cloudless skies and unhampered sunshine right from the start. Temperatures will rise, winds will be light. At 2000 m: -10 to -5 degrees; at 3000 m: -13 to -10 degrees.

Outlook

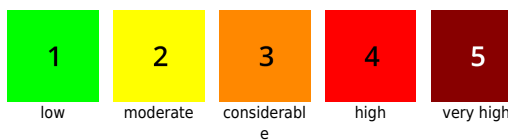
Sunshine, noticeably milder temperatures on Sunday. Steep sunny slopes will moisten on the surface, thus, a slight daytime danger cycle of naturally triggered avalanches is possible, but in all probability this will take place within Danger Level LOW.

Translated by Jeffrey McCabe, www.creativtrans.com

Avalanche problems



Danger ratings



Expositions

