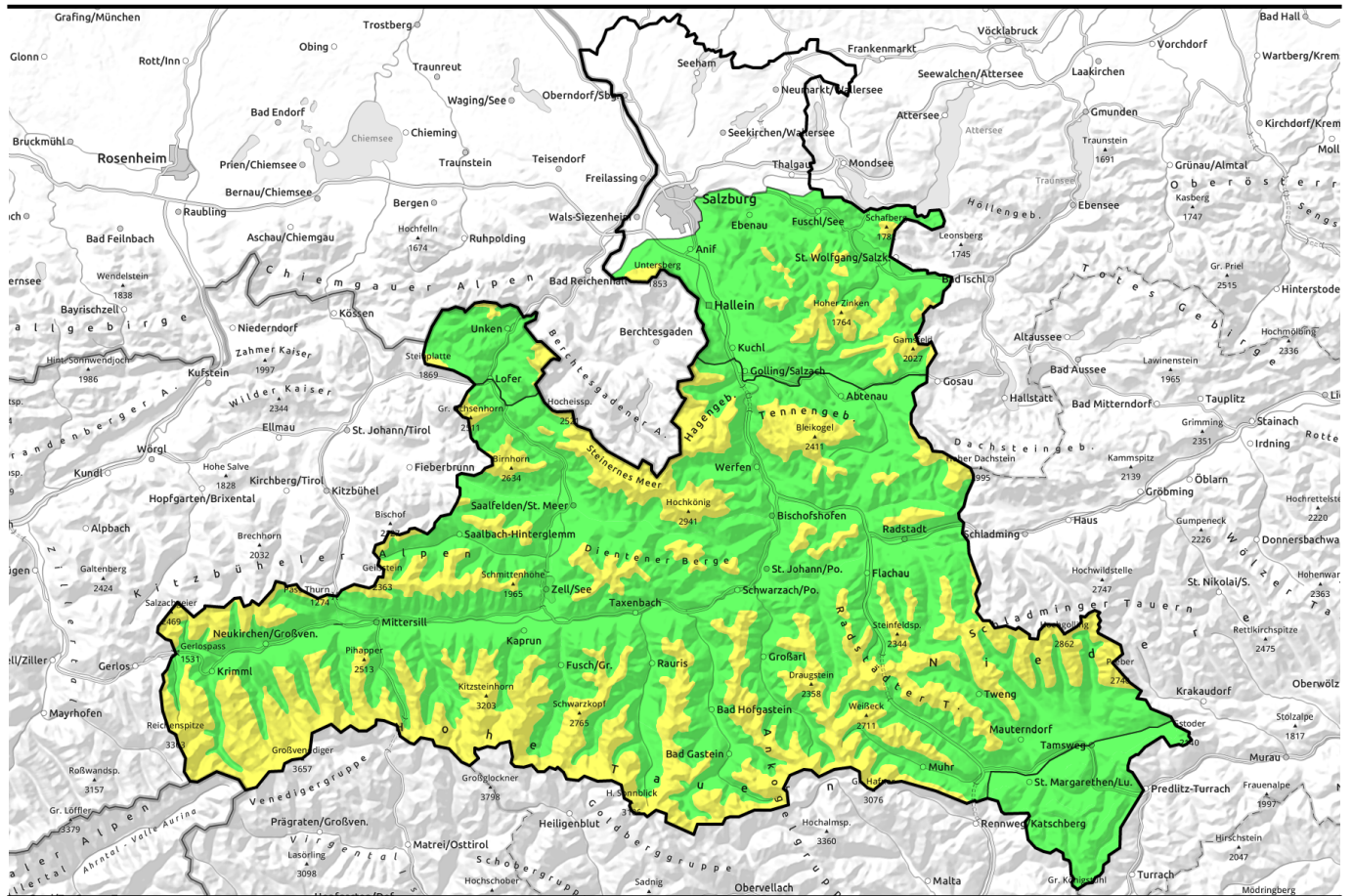


05.03.2021



Moderate fresh snow in Northern Alps and Tauern, small new danger zones



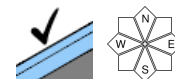
Osterhorngruppe, Gamsfeldgruppe, Chiemgauer Alpen, Heutal, Reiteralpe, Untersbergstock



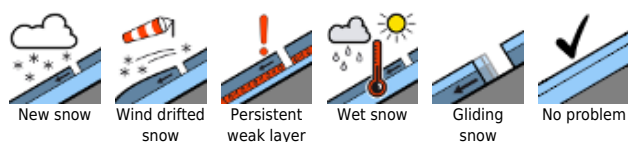
Loferer und Leoganger Steinberge, Tennengebirge, Gosaukamm, Pongauer Grasberge, Steinernes Meer, Hochkönig, Hagengebirge, Göllstock, Dientner Grasberge, Kitzbüheler Alpen, Glemmtal, Oberpinzgauer Grasberge, Großvenedigergruppe Nord, Großvenedigergruppe Alpenhauptkamm, Glocknergruppe Nord, Glocknergruppe Alpenhauptkamm, Goldberggruppe Nord, Goldberggruppe Alpenhauptkamm, Niedere Tauern Alpenhauptkamm, Niedere Tauern Nord, Ankogelgruppe, Muhr, Niedere Tauern Süd



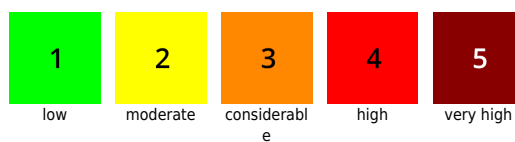
Nockberge



Avalanche problems



Danger ratings



Expositions

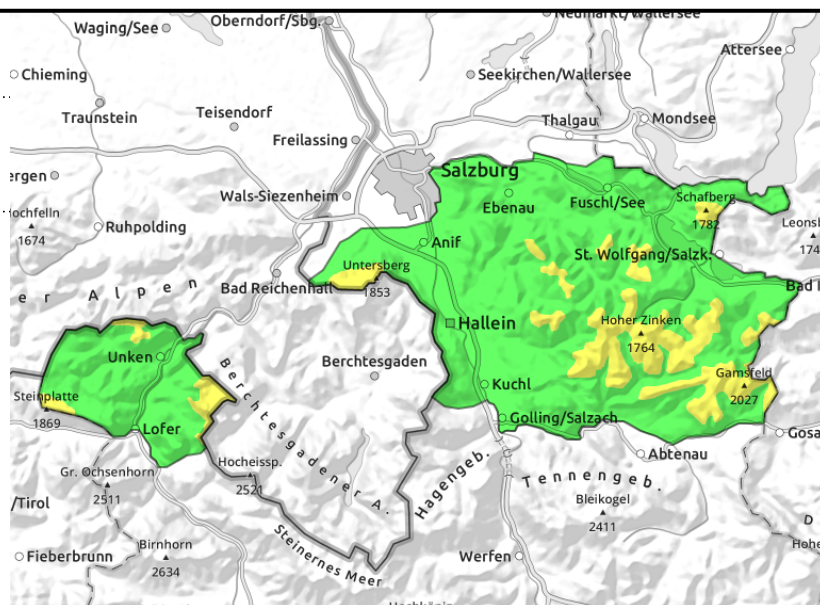


05.03.2021

Osterhorngruppe, Gamsfeldgruppe, Chiemgauer Alpen, Heutal, Reiteralpe, Untersbergstock



near ridgelines, behind protruberances, in gullies, steep bowls



Avoid fresh snowdrifts and wind-protected fresh snow on hard base

Danger above 1600 m is MODERATE, danger zones prevail in ridgeline steep terrain, in steep gullies and bowls, esp. on NW-E-SW slopes. Triggering a small-to-medium slab avalanche is possible in the fresh drifts, even be minimum additional loading.

Snowpack structure

Fresh snow on sunny slopes is being deposited on rough melt-freeze crusts (below 1600 m on bare ground), in wind-exposed west-and-east facing terrain atop melt-freeze crusts, on north-facing slopes above 1800 m atop old, mostly dry powder. Bonding to the base is generally good. Potential fracture lines for slabs are likeliest in blanketed fresh powder, but will rarely be large-spread. The old snowpack has settled well, is generally stable. More deeply embedded weak layers of faceted crystals are sufficiently covered-over.

Weather

Low, heavy cloud will hamper visibility on Friday, moderate snowfall, sometimes with graupel is expected (snowfall level descending from 1200 m in early morning). All in all, 10-20 cm of fresh snow is expected by Friday evening. Winds will be blowing at 40-60 km/hr from NW to N, bringing ever-colder air masses as the day unfolds. At 2000 m: -8 to -6 degrees in the afternoon; at 3000 m, -14 degrees.

Outlook

Moderate snowdrift problem on Saturday. In sun-drenched extremely steep terrain, some naturally triggered small loose-snow avalanches will be possible.

Avalanche problems



Danger ratings

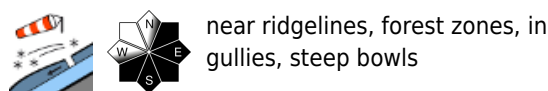
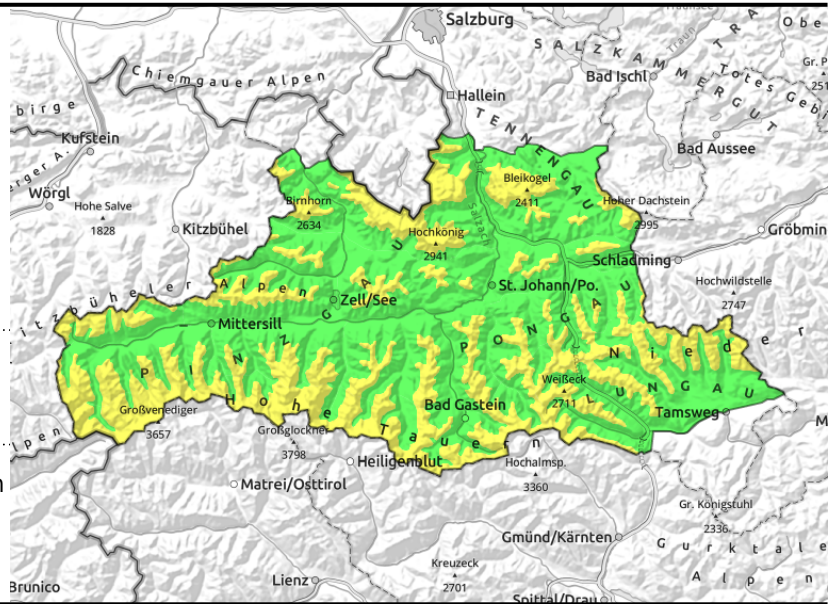


Expositions



05.03.2021

Loferer und Leoganger Steinberge, Tennengebirge, Gosaukamm, Pongauer Grasberge, Steinernes Meer, Hochkönig, Hagengebirge, Göllstock, Dientner Grasberge, Kitzbüheler Alpen, Glemmtal, Oberpinzgauer Grasberge, Großvenedigergruppe Nord, Großvenedigergruppe Alpenhauptkamm, Glocknergruppe Nord, Glocknergruppe Alpenhauptkamm, Goldberggruppe Nord, Goldberggruppe Alpenhauptkamm, Niedere Tauern Alpenhauptkamm, Niedere Tauern Nord, Ankogelgruppe, Muhr, Niedere Tauern Süd



Avoid fresh snowdrifts and wind-protected fresh snow on hard base

Danger above 1600 m is MODERATE, danger zones prevail in ridgeline steep terrain, in steep gullies and bowls, esp. on NW-E-SW slopes. Triggering a small-to-medium slab avalanche is possible in the fresh drifts, even be minimum additional loading.

Snowpack structure

Fresh snow on sunny slopes is being deposited on rough melt-freeze crusts (below 1600 m on bare ground), in wind-exposed west-and-east facing terrain atop melt-freeze crusts, on north-facing slopes above 1800 m atop old, mostly dry powder. Bonding to the base is generally good. Potential fracture lines for slabs are likeliest in blanketed fresh powder, but will rarely be large-spread.

The old snowpack has settled well, is generally stable. More deeply embedded weak layers of faceted crystals are sufficiently covered-over.

Weather

Low, heavy cloud will hamper visibility on Friday, moderate snowfall, sometimes with graupel is expected (snowfall level descending from 1200 m in early morning). All in all, 10-20 cm of fresh snow is expected by Friday evening (locally up to 30 cm). Winds will be blowing at 30-50 km/hr from NW to N (up to 70 km/hr on exposed Tauern Ridge), bringing ever-colder air masses as the day unfolds. At 2000 m: -8 to -6 degrees in the afternoon; at 3000 m, -14 degrees.

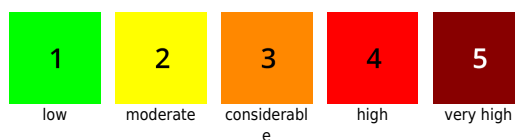
Outlook

Moderate snowdrift problem on Saturday. In sun-drenched extremely steep terrain, some naturally triggered small loose-snow avalanches will be possible.

Avalanche problems



Danger ratings



Expositions

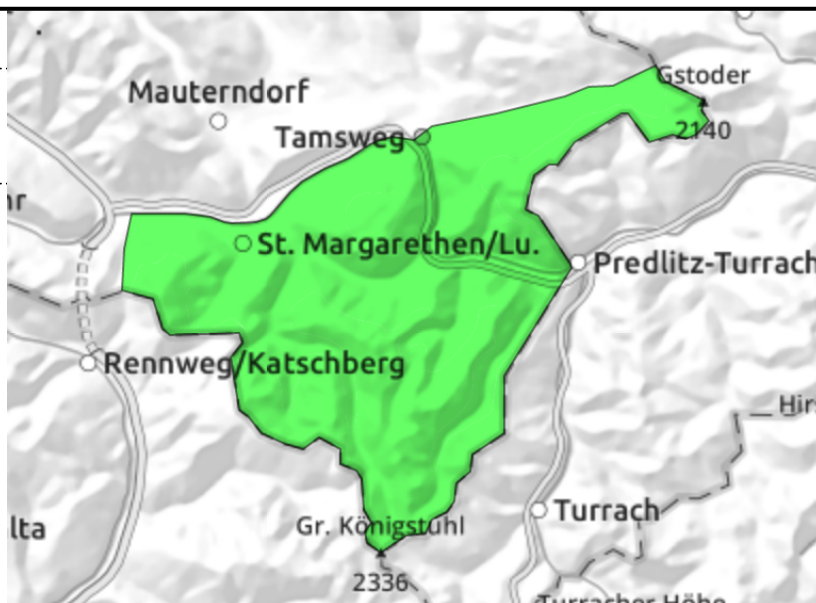


05.03.2021

Nockberge



favourable snowpack layering, only thin fresh snow atop hard base



Minor fresh snow atop stable old snowpack

Danger of avalanches is LOW. Isolated avalanche prone locations are found in extremely steep ridgeline terrain or very steep gullies, but mostly the danger of falling outweighs that of being buried in snow. Glide-snow avalanches on steep grassy slopes are unlikely, most danger zones have already discharged.

Snowpack structure

Minor snowfall will be deposited atop hardened wind-crusts and melt-freeze crusts, up to intermediate altitude on bare ground, on north-facing slopes also on old, mostly dry powder. Area-wide weak layers hardly exists, the old snowpack is stable.

Weather

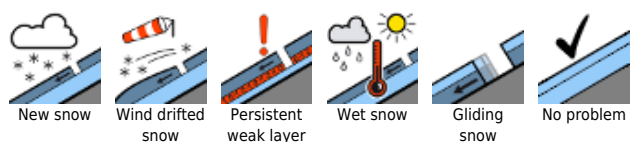
Amid strong N/NW winds (40-60 km/hr) clouds and sunshine will change places repeatedly. Most of the time it will remain dry, intermittent light snow showers could spread this far from the north. Temperatures will drop: at 2000 m, -6 degrees in the afternoon.

Outlook

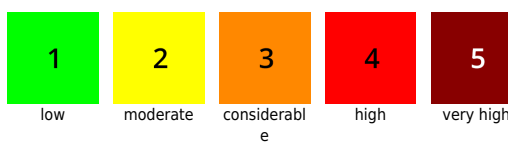
No significant change. Small loose-snow slides of the fresh snow are possible on sun-drenched steep slopes.

Translated by Jeffrey McCabe, www.creativtrans.com

Avalanche problems



Danger ratings



Expositions

