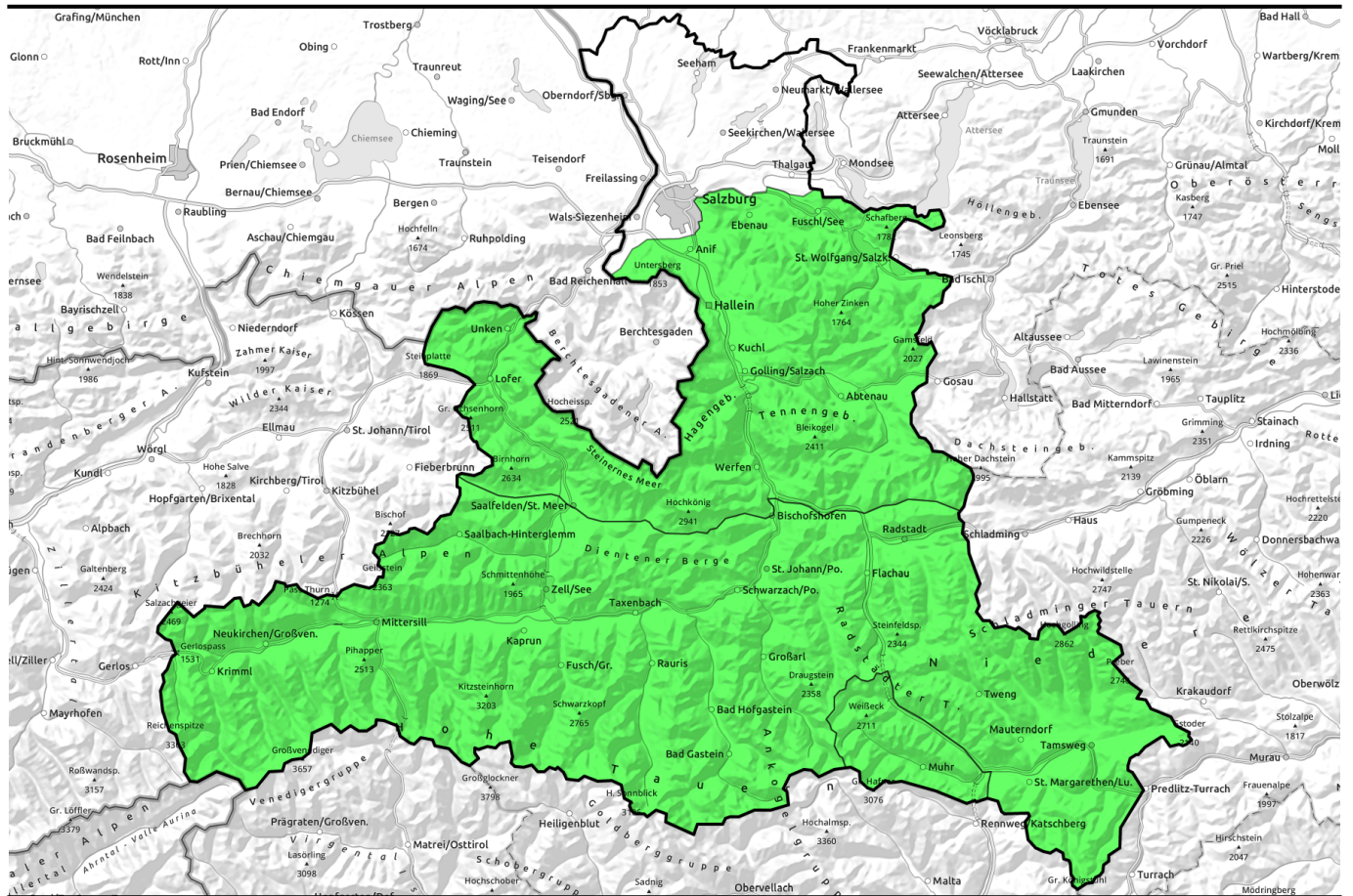



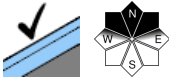

# 28.02.2021, morning



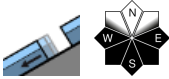

## Favourable conditions. Slight snowpack softening only on south-facing slopes.

- 

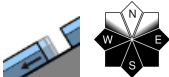
Osterhorngruppe, Gamsfeldgruppe, Steinernes Meer, Hochkönig, Hagengebirge, Göllstock, Tennengebirge, Gosaukamm, Untersbergstock, Chiemgauer Alpen, Heutal, Reiteralpe, Loferer und Leoganger Steinberge


- 

Kitzbüheler Alpen, Glemmtal, Oberpinzgauer Grasberge, Großvenedigergruppe Nord, Großvenedigergruppe Alpenhauptkamm, Glocknergruppe Nord, Dientner Grasberge, Pongauer Grasberge, Niedere Tauern Nord, Goldberggruppe Nord, Glocknergruppe Alpenhauptkamm, Goldberggruppe Alpenhauptkamm, Niedere Tauern Alpenhauptkamm, Niedere Tauern Süd, Nockberge


- 

Ankogelgruppe, Muhr



### Avalanche problems



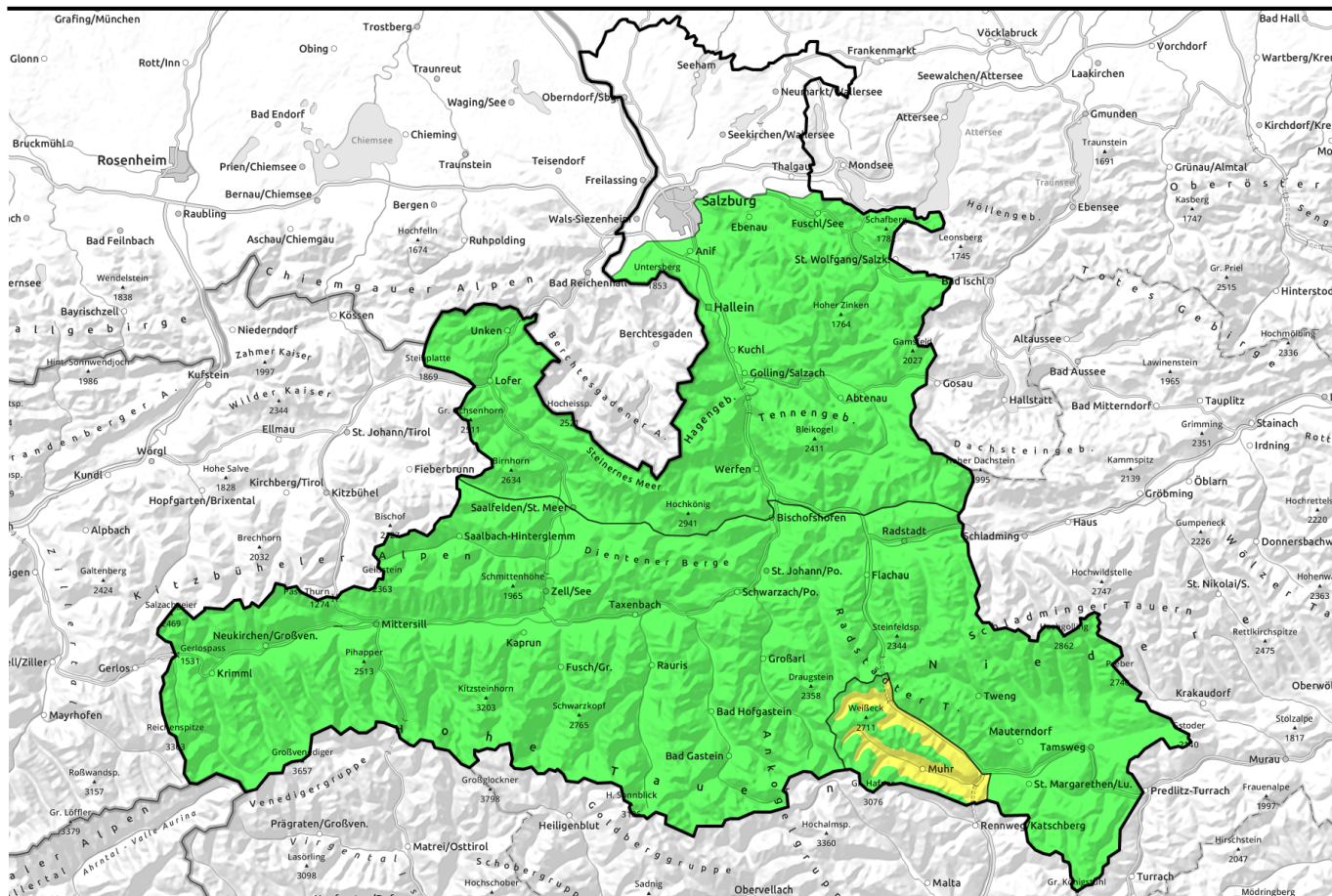
### Danger ratings



### Expositions



# 28.02.2021, afternoon



## Günstig! Nur im Südsektor leichtes oberflächliches Aufweichen



Osterhorngruppe, Gamsfeldgruppe, Steinernes Meer, Hochkönig, Hagengebirge, Göllstock, Tennengebirge, Gosaukamm, Untersbergstock, Chiemgauer Alpen, Heutal, Reiteralpe, Loferer und Leoganger Steinberge



Kitzbüheler Alpen, Glemmtal, Oberpinzgauer Grasberge, Großvenedigergruppe Nord, Großvenedigergruppe Alpenhauptkamm, Glocknergruppe Nord, Dientner Grasberge, Pongauer Grasberge, Niedere Tauern Nord, Goldberggruppe Nord, Glocknergruppe Alpenhauptkamm, Goldberggruppe Alpenhauptkamm, Niedere Tauern Alpenhauptkamm, Niedere Tauern Süd, Nockberge

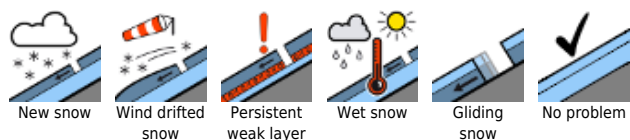


Ankogelgruppe, Muhr

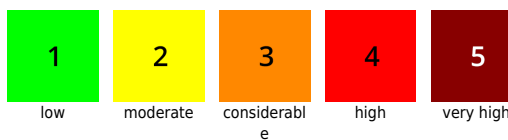


2200 m

### Avalanche problems



### Danger ratings



### Expositions

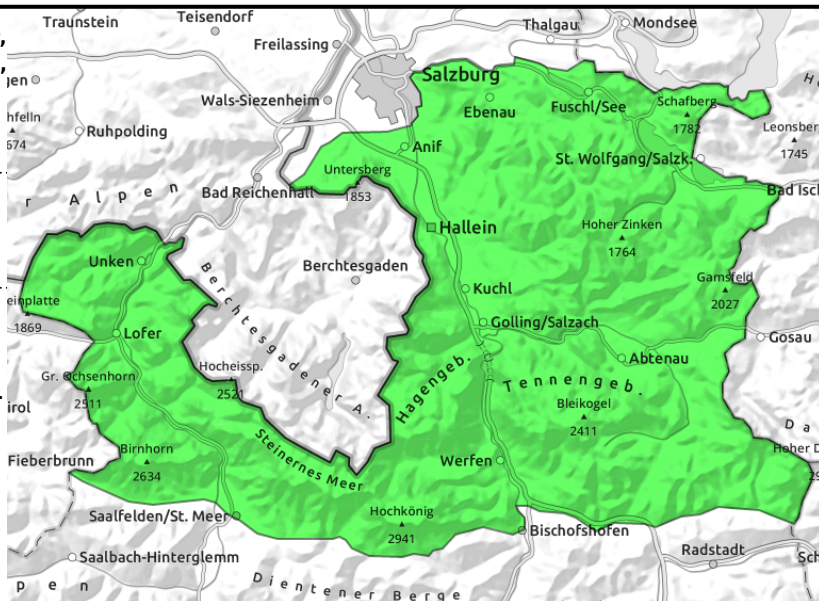


**28.02.2021**

**Osterhorngruppe, Gamsfeldgruppe, Steinernes Meer, Hochkönig, Hagengebirge, Göllstock, Tennengebirge, Gosaukamm, Untersbergstock, Chiemgauer Alpen, Heutal, Reiteralpe, Loferer und Leoganger Steinberge**



Hardly any avalanche prone locations. Where sun shines late, the surface is hard as iron.



## Stable, hard snowpack

Avalanche danger is LOW, hardly any avalanche prone locations. Most likely to trigger are shallow-snow and extremely steep (40°) north-facing slopes above 2400 m where a few snowdrift patches are movable, forcing a fall. Potential for glide-snow avalanches is low, sensitive spots rare, the amounts of snow too little.

## Snowpack structure

A few centimetres of fresh snow on Saturday lie atop a melt-freeze encrusted, stable snowpack. The only potential weak layer is at ground level, but this is unlikely to trigger due to highly variable snow depths.

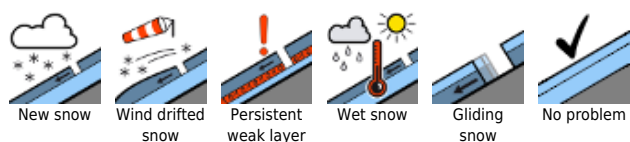
## Weather

Perfect mountain weather on Sunday: cloudless skies, hardly any wind, outstanding visibility, low air moisture. At 1500 m: -1 to +3 degrees; at 2000 m: -2 to +1 degree; at 3000 m: -5 degrees. Outlook: Monday through Wednesday cloudless skies. Temperatures will rise slightly, but it will not be quite as warm as last week. Air moisture will remain low. Thus, adequate nocturnal outgoing radiation, reduced firn, hard surfaces on shady slopes.

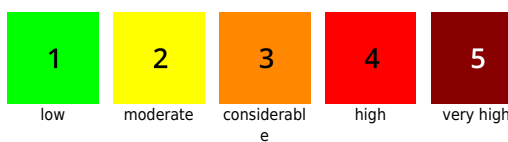
## Outlook

No change. Perfect springtime conditions, only a slight daytime cycle. Change probably coming on Friday.

### Avalanche problems



### Danger ratings

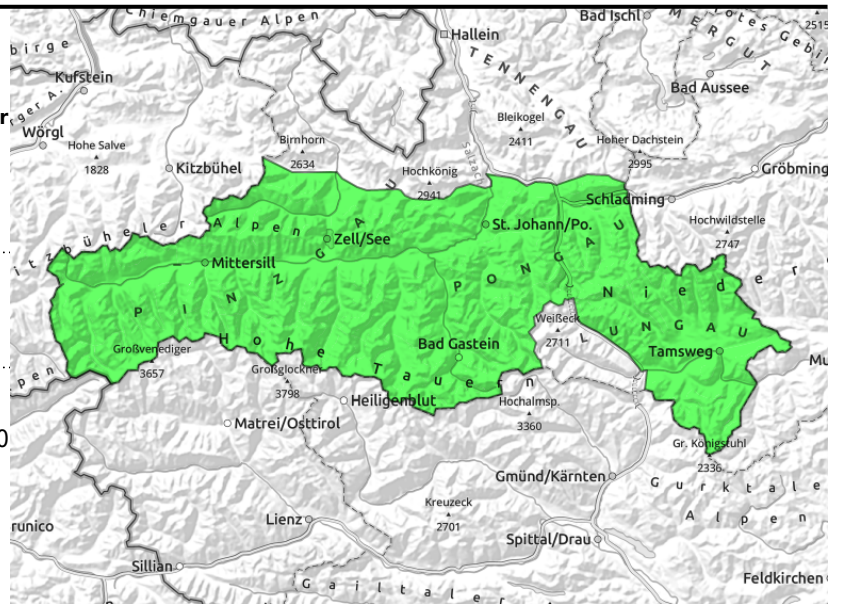


### Expositions



**28.02.2021**

**Kitzbüheler Alpen, Glemmtal, Oberpinzgauer Grasberge, Großvenedigergruppe Nord, Großvenedigergruppe Alpenhauptkamm, Glocknergruppe Nord, Dientner Grasberge, Pongauer Grasberge, Niedere Tauern Nord, Goldberggruppe Nord, Glocknergruppe Alpenhauptkamm, Goldberggruppe Alpenhauptkamm, Niedere Tauern Süd, Nockberge**



on extremely steep grassy slopes, seldom/few, below 2200 m

## Stable snowpack, heed risks of taking a fall on hardened steep slopes

Avalanche danger is LOW, hardly any avalanche prone locations. Most likely to trigger are shallow-snow and extremely steep (40°) north-facing slopes above 2400 m where a few snowdrift patches are movable, forcing a fall. Potential for glide-snow avalanches is low, sensitive spots rare, the amounts of snow too little. Small-to-medium avalanches are possible in extremely steep grassy terrain, mostly outside the classic backcountry routes.

### Snowpack structure

A few centimetres of fresh snow (with graupel) from Saturday lies deposited atop a melt-freeze encrusted snowpack. The snowpack beneath it is well settled and stable. More deeply embedded layers of faceted crystals are generally well covered.

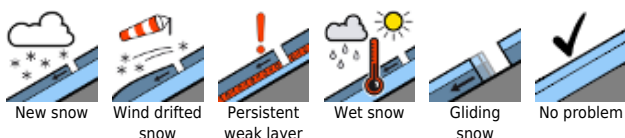
### Weather

Perfect mountain weather on Sunday: cloudless skies, hardly any wind, outstanding visibility, low air moisture. At 1500 m: -1 to +3 degrees; at 2000 m: -2 to +1 degree; at 3000 m: -5 degrees. Outlook: Monday through Wednesday cloudless skies. Temperatures will rise slightly, but it will not be quite as warm as last week. Air moisture will remain low. Thus, adequate nocturnal outgoing radiation, reduced firn, hard surfaces on shady slopes.

### Outlook

No change. Perfect springtime conditions, only a slight daytime cycle. Change probably coming on Friday.

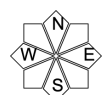
#### Avalanche problems



#### Danger ratings



#### Expositions

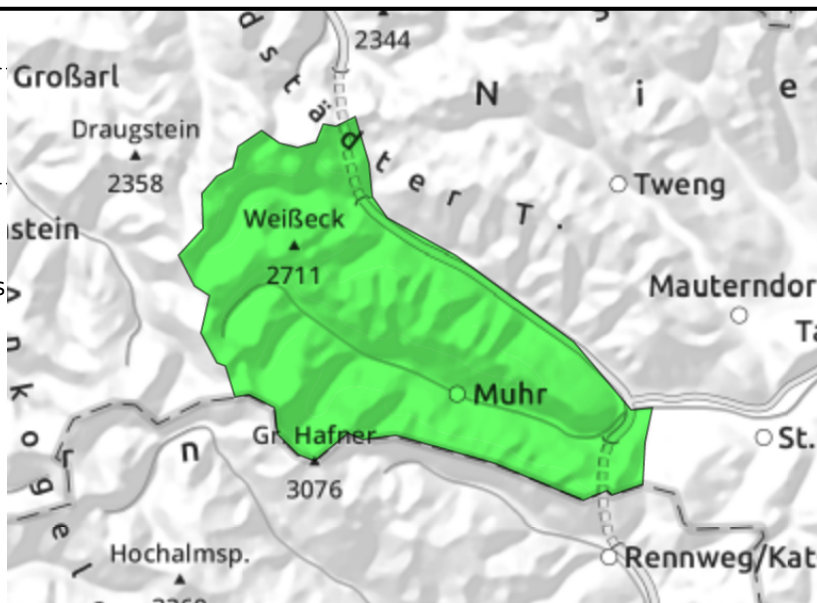


# 28.02.2021, morning

## Ankogelgruppe, Muhr



in extremely steep grassy terrain, esp. in the afternoon: medium-sized, in isolated cases large-sized



## Favourable conditions. Keep in mind: glide-snow avalanches are always possible.

Avalanche danger is LOW, hardly any avalanche prone locations, danger on south-facing slopes rising to MODERATE. Only problem: glide snow, small-to-medium, in isolated cases large-sized glide-snow avalanches in very steep grassy terrain below 2200 m, particularly where fractures are already apparent in the snowpack.

### Snowpack structure

Saturday brought next to no fresh snow. Hardened, encrusted surfaces dominate. The snowpack beneath them has settled well, is stable. More deeply embedded layers of faceted crystals are generally well covered. The only potential weak layer is at ground level, with possible influence on gliding snow.

### Weather

Perfect mountain weather on Sunday: cloudless skies, hardly any wind, outstanding visibility, low air moisture. At 2000 m: -4 to 0 degree; at 3000 m: -5 degrees.

Outlook: Monday through Wednesday cloudless skies. Temperatures will rise slightly, but it will not be quite as warm as last week. Air moisture will remain low. Thus, adequate nocturnal outgoing radiation, reduced firm, hard surfaces on shady slopes.

### Outlook

No change. Perfect springtime conditions, only a slight daytime cycle. Change probably coming on Friday.

#### Avalanche problems



New snow



Wind drifted snow



Persistent weak layer



Wet snow



Gliding snow



No problem

#### Danger ratings



1

low



2

moderate



3

considerable

e



4

high



5

very high



#### Expositions

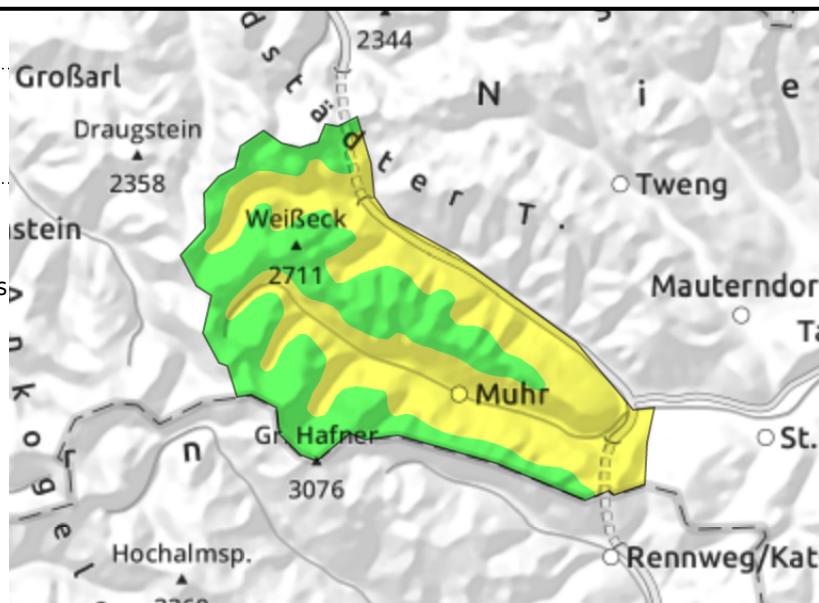


# 28.02.2021, afternoon

## Ankogelgruppe, Muhr



  in extremely steep grassy terrain, esp. in the afternoon: medium-sized, in isolated cases large-sized



### Favourable conditions. Keep in mind: glide-snow avalanches are always possible.

Avalanche danger is LOW, hardly any avalanche prone locations, danger on south-facing slopes rising to MODERATE. Only problem: glide snow, small-to-medium, in isolated cases large-sized glide-snow avalanches in very steep grassy terrain below 2200 m, particularly where fractures are already apparent in the snowpack.

### Snowpack structure

Saturday brought next to no fresh snow. Hardened, encrusted surfaces dominate. The snowpack beneath them has settled well, is stable. More deeply embedded layers of faceted crystals are generally well covered. The only potential weak layer is at ground level, with possible influence on gliding snow.

### Weather

Perfect mountain weather on Sunday: cloudless skies, hardly any wind, outstanding visibility, low air moisture. At 2000 m: -4 to 0 degree; at 3000 m: -5 degrees.

Outlook: Monday through Wednesday cloudless skies. Temperatures will rise slightly, but it will not be quite as warm as last week. Air moisture will remain low. Thus, adequate nocturnal outgoing radiation, reduced firm, hard surfaces on shady slopes.

### Outlook

No change. Perfect springtime conditions, only a slight daytime cycle. Change probably coming on Friday.

Translated by Jeffrey McCabe, [www.creativtrans.com](http://www.creativtrans.com)

#### Avalanche problems



#### Danger ratings



#### Expositions

