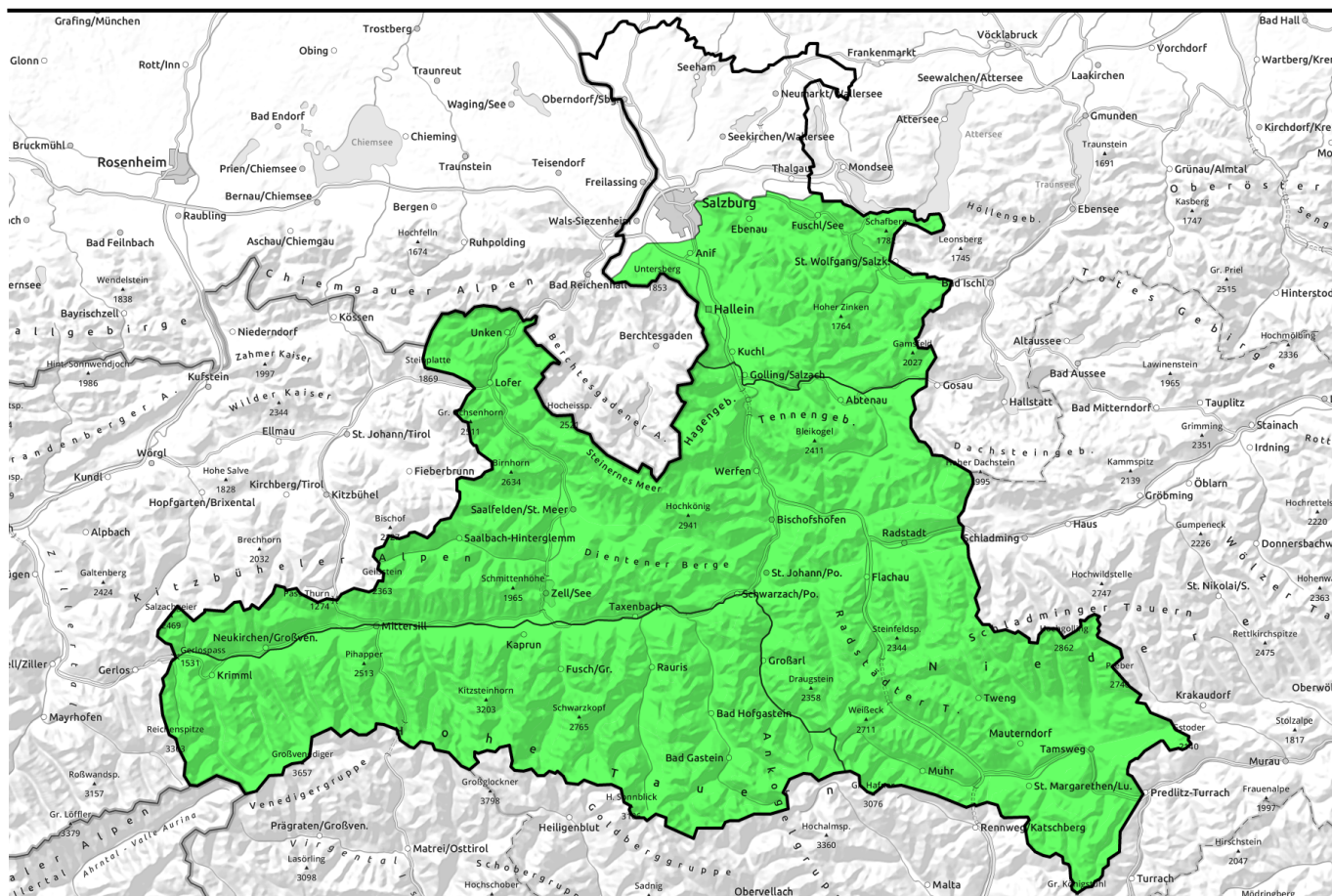


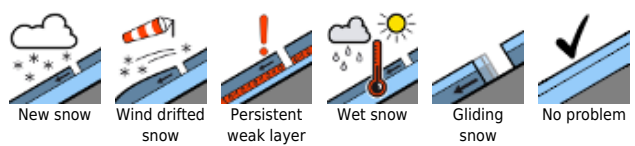
# 25.02.2021, morning



## Naturally triggered avalanche activity due to daytime warming

- Osterhorngruppe, Gamsfeldgruppe, Untersbergstock
- Loferer und Leoganger Steinberge, Kitzbüheler Alpen, Glemmtal, Oberpinzgauer Grasberge, Steinernes Meer, Hochkönig, Hagengebirge, Göllstock, Tennengebirge, Gosaukamm, Pongauer Grasberge, Niedere Tauern Nord, Dientner Grasberge, Niedere Tauern Alpenhauptkamm, Chiemgauer Alpen, Heutal, Reiteralpe, Niedere Tauern Süd, Ankogelgruppe, Muhr, Nockberge
- Glocknergruppe Nord, Glocknergruppe Alpenhauptkamm, Goldberggruppe Nord, Goldberggruppe Alpenhauptkamm, Großvenedigergruppe Nord, Großvenedigergruppe Alpenhauptkamm

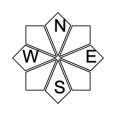
### Avalanche problems



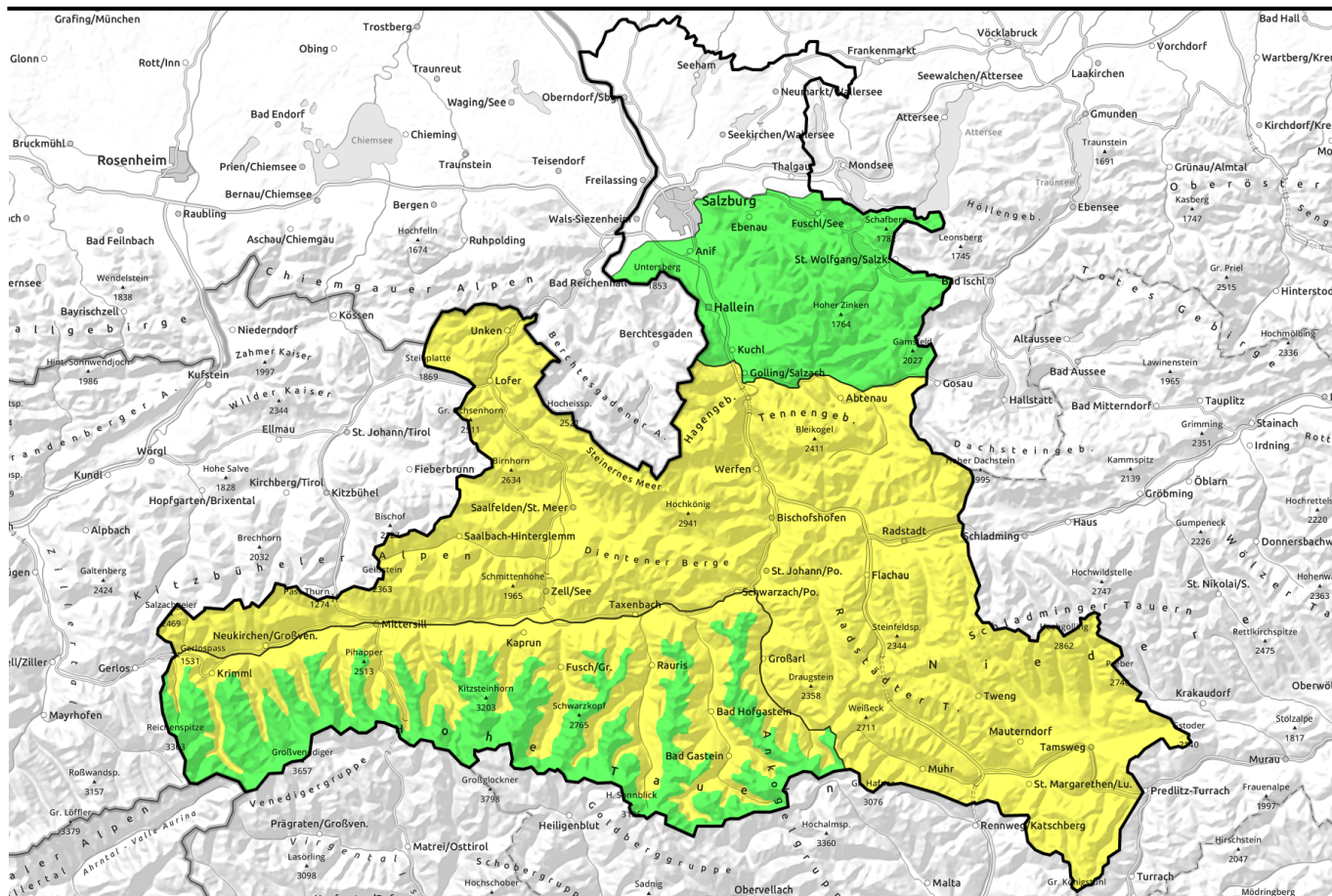
### Danger ratings



### Expositions



# 25.02.2021, afternoon

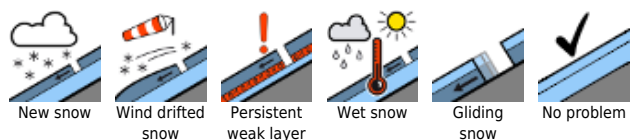


## Spontane Lawinenaktivität mit der Tageserwärmung

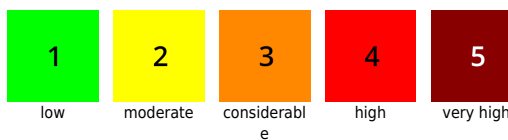
	<p>Osterhorngruppe, Gamsfeldgruppe, Untersbergstock</p>	
	<p>Loferer und Leoganger Steinberge, Kitzbüheler Alpen, Glemmtal, Oberpinzgauer Grasberge, Steinernes Meer, Hochkönig, Hagengebirge, Göllstock, Tennengebirge, Gosaukamm, Pongauer Grasberge, Niedere Tauern Nord, Dientner Grasberge, Niedere Tauern Alpenhauptkamm, Chiemgauer Alpen, Heutal, Reiteralpe, Niedere Tauern Süd, Ankogelgruppe, Muhr, Nockberge</p>	
	<p>Glocknergruppe Nord, Glocknergruppe Alpenhauptkamm, Goldberggruppe Nord, Goldberggruppe Alpenhauptkamm, Großvenedigergruppe Nord, Großvenedigergruppe Alpenhauptkamm</p>	

2600 m

### Avalanche problems



### Danger ratings



### Expositions



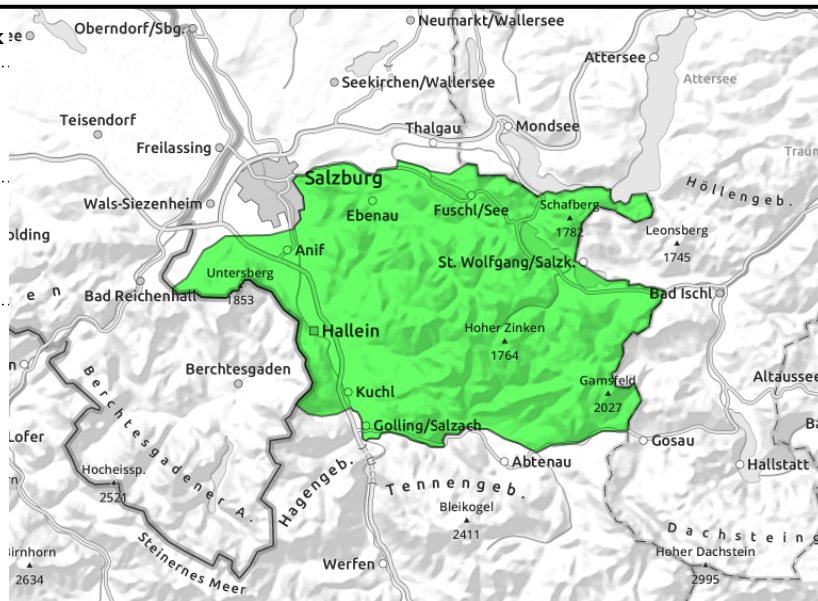
**25.02.2021**

**Osterhorngruppe, Gamsfeldgruppe, Untersbergstock**



daytime cycle of naturally triggered avalanche activity

in extremely steep grassy terrain



**As a result of daytime warming, naturally triggered wet-snow releases**

Avalanche danger is subject to a daytime cycle, although it remains LOW due to the minor amounts of snow. In early and late morning, stable conditions prevail. As of midday, small (in isolated cases also medium-sized) glide-snow or superficial wet-snow avalanches can be expected in very steep south-facing slopes, also triggered by skiers.

**Snowpack structure**

Following a night of clear skies and adequate outgoing radiation, melt-freeze crusts capable of bearing loads dominate. In the course of the morning, firn snow will be generated on sunny slopes, the snowpack moistening continues. The shallow snowpack has settled well, in many zones it is 0-degrees isotherm. On north-facing slopes the snowpack is still dry.

**Weather**

On Friday, weather conditions will be highly pleasant. In the morning the sunshine can only be hampered by dust blown northwards from the Sahara desert. In the afternoon, high-altitude clouds will move in, visibility could become diffuse. A light to moderate-strength westerly wind will be blowing. Temperatures at 1500 m: 7-12 degrees, at 2000 m: 5-10 degrees.

**Outlook**

No significant change is anticipated. Springlike conditions continue, with a daytime danger cycle.

**Avalanche problems**



**Danger ratings**

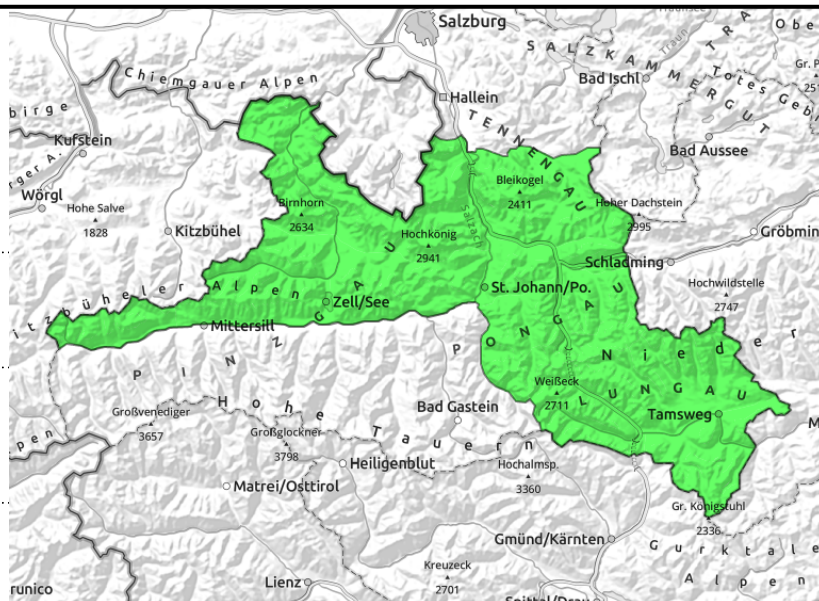


**Expositions**



# 25.02.2021, morning

Loferer und Leoganger Steinberge, Kitzbüheler Alpen, Glemmtal, Oberpinzgauer Grasberge, Steinernes Meer, Hochkönig, Hagengebirge, Göllstock, Tennengebirge, Gosaukamm, Pongauer Grasberge, Niedere Tauern Nord, Dientner Grasberge, Niedere Tauern Alpenhauptkamm, Chiemgauer Alpen, Heutal, Reiteralpe, Niedere Tauern Süd, Ankogelgruppe, Muhr, Nockberge



Daytime danger cycle of avalanche activity on sun-drenched steep slopes



in extremely steep grass-covered terrain

## Naturally triggered wet-snow and glide-snow avalanches on sun-drenched steep slopes

Avalanche danger is subject to a daytime cycle of LOW to MODERATE. In early and later morning, favourable and generally stable conditions reign. In isolated cases at high and high-alpine altitudes, in shady and extremely steep terrain, a dry-snow avalanche could still be triggered. Isolated naturally triggered wet-snow avalanches are possible in the morning, as of midday small-to-medium sized glide-snow and wet-snow releases will increase, also triggerable by skiers in very steep and sunny slopes below about 2600 m.

### Snowpack structure

Following a night of clear skies, melt-freeze crusts dominate. The snowpack has settled well, the inner layers are generally well bonded with one another. During the course of the morning, firn snow will be generated on sunny slopes initially; as daytime warming and solar radiation increase the snowpack will then forfeit its firmness, at least superficially below about 2600 m. On north-facing slopes the snowpack is still dry.

### Weather

On Friday it will be very pleasant in the mountains. In the morning, sunshine can only be hampered by dust driven northwards from the Sahara desert; in the afternoon some high altitude clouds will move in. Visibility could become diffuse. A light to moderate westerly wind will be blowing. Temperature at 2000 m: 5-10 degrees; at 3000 m: -1 to +2 degrees.

### Outlook

On Friday in high-alpine regions, temperatures will drop slightly, otherwise no significant change is anticipated. Springlike conditions, with a typical daytime danger cycle.

#### Avalanche problems



#### Danger ratings

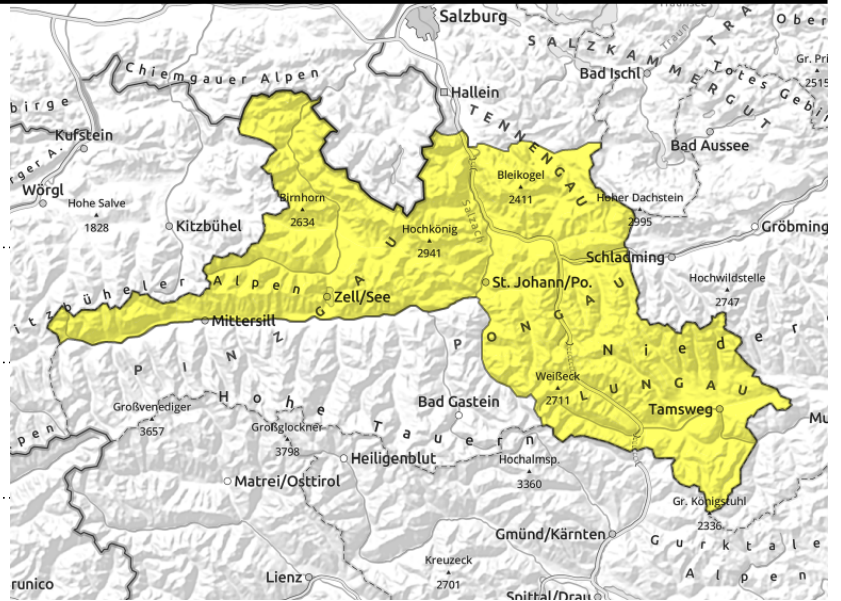


#### Expositions



# 25.02.2021, afternoon

Loferer und Leoganger Steinberge, Kitzbüheler Alpen, Glemmtal, Oberpinzgauer Grasberge, Steinernes Meer, Hochkönig, Hagengebirge, Göllstock, Tennengebirge, Gosaukamm, Pongauer Grasberge, Niedere Tauern Nord, Dientner Grasberge, Niedere Tauern Alpenhauptkamm, Chiemgauer Alpen, Heutal, Reiteralpe, Niedere Tauern Süd, Ankogelgruppe, Muhr, Nockberge



Daytime danger cycle of avalanche activity on sun-drenched steep slopes



in extremely steep grass-covered terrain

## Naturally triggered wet-snow and glide-snow avalanches on sun-drenched steep slopes

Avalanche danger is subject to a daytime cycle of LOW to MODERATE. In early and later morning, favourable and generally stable conditions reign. In isolated cases at high and high-alpine altitudes, in shady and extremely steep terrain, a dry-snow avalanche could still be triggered. Isolated naturally triggered wet-snow avalanches are possible in the morning, as of midday small-to-medium sized glide-snow and wet-snow releases will increase, also triggerable by skiers in very steep and sunny slopes below about 2600 m.

### Snowpack structure

Following a night of clear skies, melt-freeze crusts dominate. The snowpack has settled well, the inner layers are generally well bonded with one another. During the course of the morning, firn snow will be generated on sunny slopes initially; as daytime warming and solar radiation increase the snowpack will then forfeit its firmness, at least superficially below about 2600 m. On north-facing slopes the snowpack is still dry.

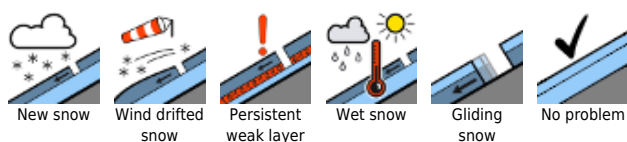
### Weather

On Friday it will be very pleasant in the mountains. In the morning, sunshine can only be hampered by dust driven northwards from the Sahara desert; in the afternoon some high altitude clouds will move in. Visibility could become diffuse. A light to moderate westerly wind will be blowing. Temperature at 2000 m: 5-10 degrees; at 3000 m: -1 to +2 degrees.

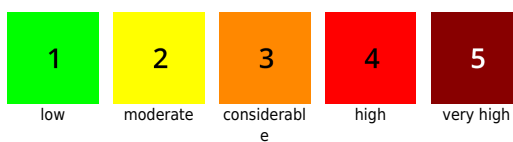
### Outlook

On Friday in high-alpine regions, temperatures will drop slightly, otherwise no significant change is anticipated. Springlike conditions, with a typical daytime danger cycle.

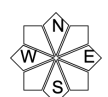
#### Avalanche problems



#### Danger ratings



#### Expositions



# 25.02.2021, morning

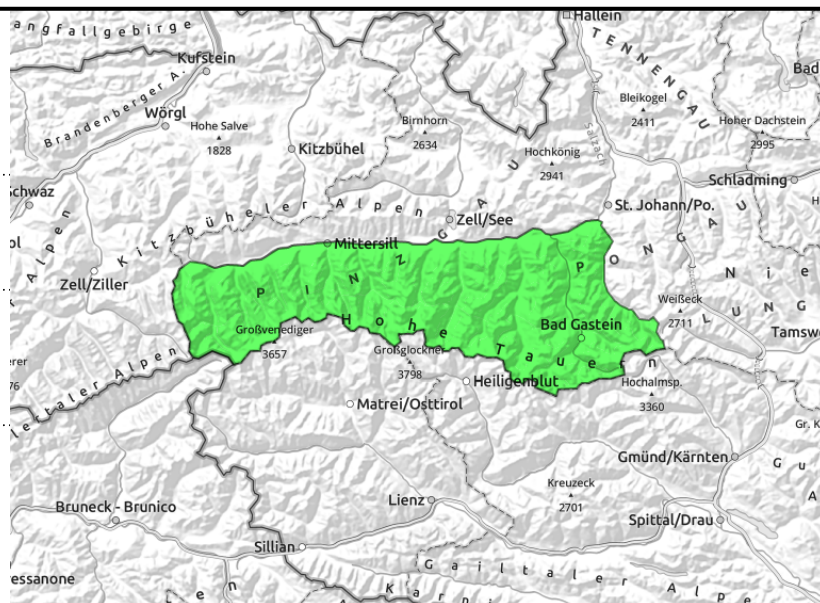
**Glocknergruppe Nord, Glocknergruppe Alpenhauptkamm, Goldberggruppe Nord, Goldberggruppe Alpenhauptkamm, Großvenedigergruppe Nord, Großvenedigergruppe Alpenhauptkamm**



daytime cycle of naturally triggered avalanche danger in sun-drenched steep terrain



in extremely steep grassy terrain



## Naturally triggered wet-snow / glide-snow avalanches below 2600 m

Avalanche danger is subject to a daytime cycle, although it remains LOW accompanied by isolated avalanche prone locations. During the course of the day below 2600 m, MODERATE danger. In isolated cases at high and high-alpine altitudes in shady and extremely steep terrain, a dry-snow avalanche could still trigger. Isolated naturally triggered wet-snow avalanches (up to magnitude 2) are possible during the morning, as of midday small-to-medium sized glide-snow and superficial wet-snow avalanches are possible in very steep, sunny terrain below about 2600 m, also triggered by skiers.

### Snowpack structure

Following a night of clear skies, melt-freeze crusts dominate. The snowpack has settled well, the inner layers are generally well bonded with one another. During the course of the morning, firn snow will be generated on sunny slopes initially; as daytime warming and solar radiation increase the snowpack will then forfeit its firmness, at least superficially below about 2600 m. On north-facing slopes the snowpack is still dry.

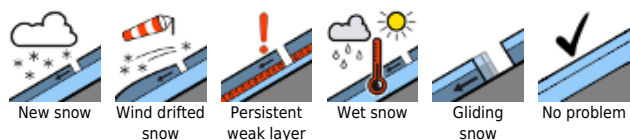
### Weather

On Friday it will be very pleasant in the mountains. In the morning, sunshine can only be hampered by dust driven northwards from the Sahara desert; in the afternoon some high altitude clouds will move in. Visibility could become diffuse. A light to moderate westerly wind will be blowing. Temperature at 2000 m: 5-10 degrees; at 3000 m: -1 to +2 degrees.

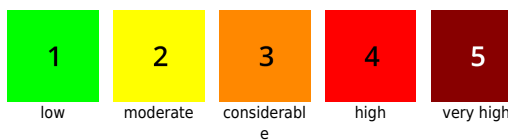
### Outlook

On Friday in high-alpine regions, temperatures will drop slightly, otherwise no significant change is anticipated. Springlike conditions, with a typical daytime danger cycle.

#### Avalanche problems



#### Danger ratings




#### Expositions




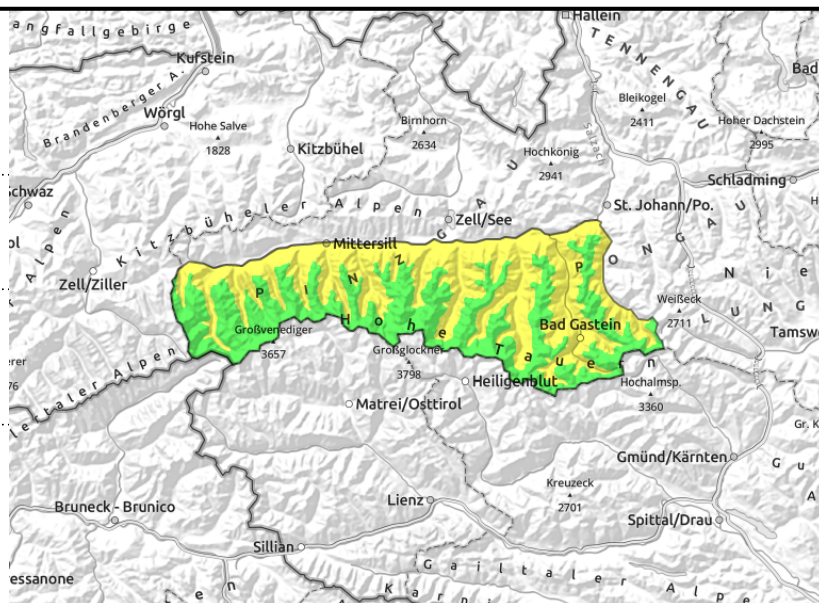
# 25.02.2021, afternoon

**Glocknergruppe Nord, Glocknergruppe Alpenhauptkamm, Goldberggruppe Nord, Goldberggruppe Alpenhauptkamm, Großvenedigergruppe Nord, Großvenedigergruppe Alpenhauptkamm**



 daytime cycle of naturally triggered avalanche danger in sun-drenched steep terrain

 in extremely steep grassy terrain



## Naturally triggered wet-snow / glide-snow avalanches below 2600 m

Avalanche danger is subject to a daytime cycle, although it remains LOW accompanied by isolated avalanche prone locations. During the course of the day below 2600 m, MODERATE danger. In isolated cases at high and high-alpine altitudes in shady and extremely steep terrain, a dry-snow avalanche could still trigger. Isolated naturally triggered wet-snow avalanches (up to magnitude 2) are possible during the morning, as of midday small-to-medium sized glide-snow and superficial wet-snow avalanches are possible in very steep, sunny terrain below about 2600 m, also triggered by skiers.

### Snowpack structure

Following a night of clear skies, melt-freeze crusts dominate. The snowpack has settled well, the inner layers are generally well bonded with one another. During the course of the morning, firn snow will be generated on sunny slopes initially; as daytime warming and solar radiation increase the snowpack will then forfeit its firmness, at least superficially below about 2600 m. On north-facing slopes the snowpack is still dry.

### Weather

On Friday it will be very pleasant in the mountains. In the morning, sunshine can only be hampered by dust driven northwards from the Sahara desert; in the afternoon some high altitude clouds will move in. Visibility could become diffuse. A light to moderate westerly wind will be blowing. Temperature at 2000 m: 5-10 degrees; at 3000 m: -1 to +2 degrees.

### Outlook

On Friday in high-alpine regions, temperatures will drop slightly, otherwise no significant change is anticipated. Springlike conditions, with a typical daytime danger cycle.

Translated by Jeffrey McCabe, [www.creativtrans.com](http://www.creativtrans.com)

#### Avalanche problems



#### Danger ratings



#### Expositions

