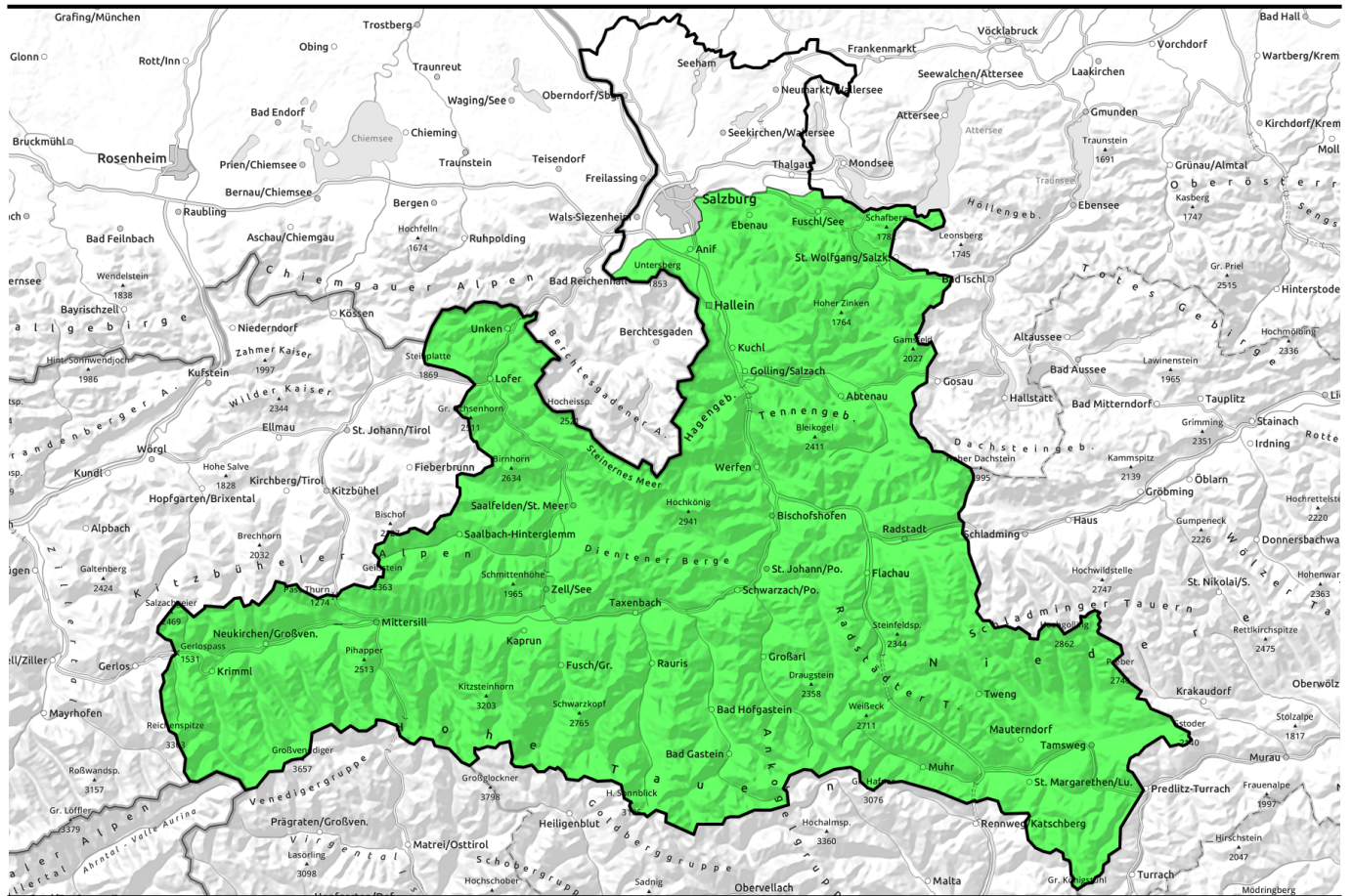


24.02.2021, morning



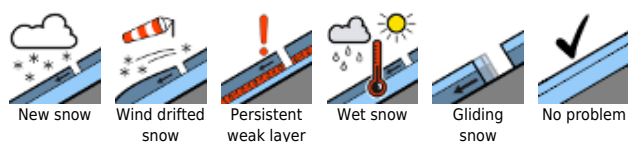
Heed daytime cycle



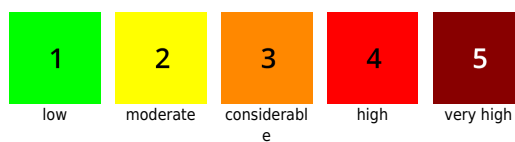
Osterhorngruppe, Gamsfeldgruppe, Untersbergstock, Steinernes Meer, Hochkönig, Hagengebirge, Göllstock, Chiemgauer Alpen, Heutal, Reiteralpe, Loferer und Leoganger Steinberge, Kitzbüheler Alpen, Glemmtal, Oberpinzgauer Grasberge, Großvenedigergruppe Nord, Großvenedigergruppe Alpenhauptkamm, Glocknergruppe Nord, Glocknergruppe Alpenhauptkamm, Dientner Grasberge, Goldberggruppe Nord, Goldberggruppe Alpenhauptkamm, Tennengebirge, Gosaukamm, Pongauer Grasberge, Niedere Tauern Nord, Niedere Tauern Alpenhauptkamm, Niedere Tauern Süd, Ankogelgruppe, Muhr, Nockberge



Avalanche problems



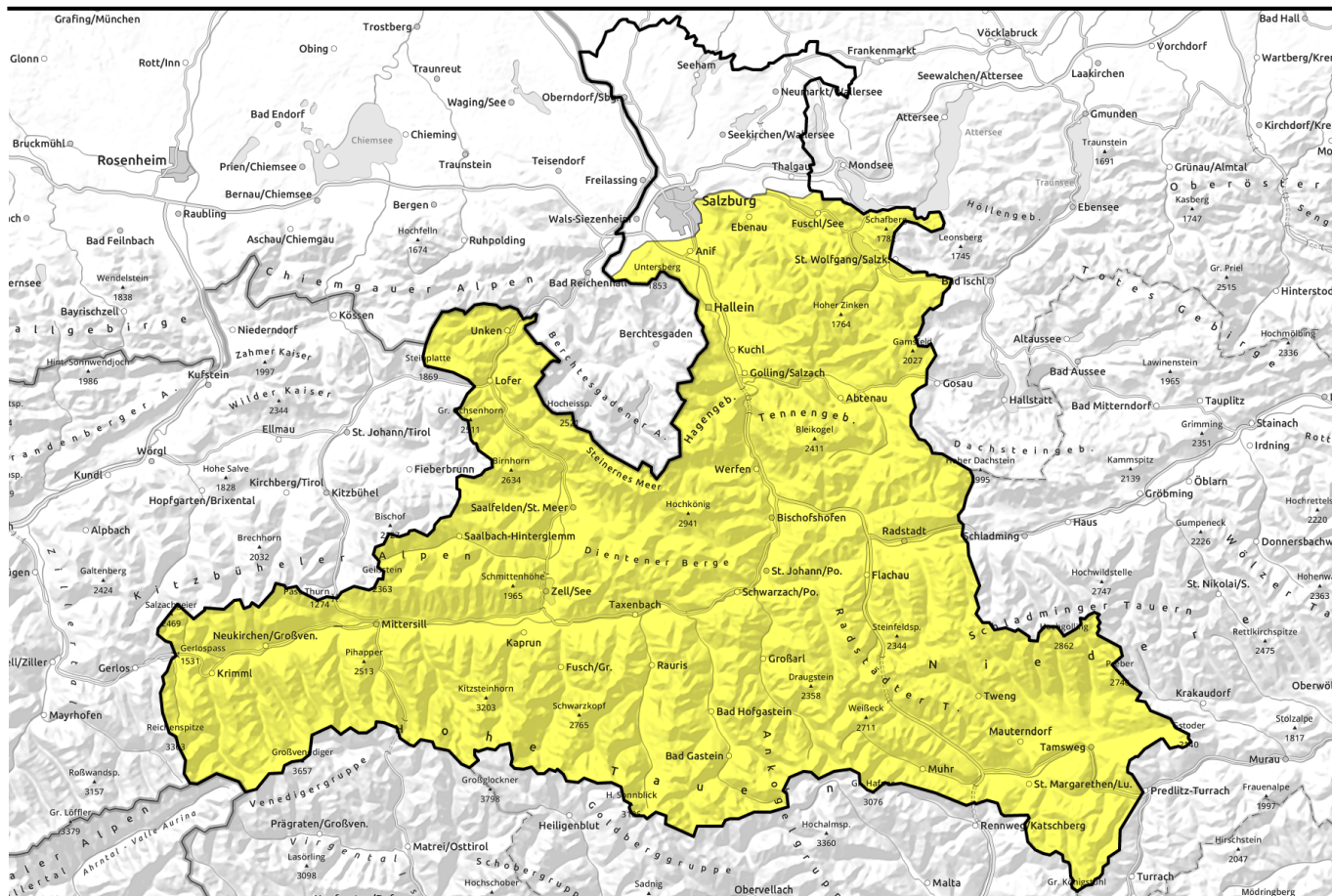
Danger ratings



Expositions



24.02.2021, afternoon



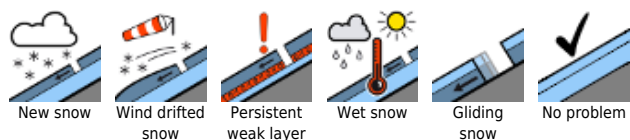
Tagesgang beachten



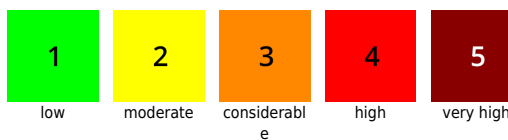
Osterhorngruppe, Gamsfeldgruppe, Untersbergstock, Steinernes Meer, Hochkönig, Hagengebirge, Göllstock, Chiemgauer Alpen, Heutal, Reiteralpe, Loferer und Leoganger Steinberge, Kitzbüheler Alpen, Glemmtal, Oberpinzgauer Grasberge, Großvenedigergruppe Nord, Großvenedigergruppe Alpenhauptkamm, Glocknergruppe Nord, Glocknergruppe Alpenhauptkamm, Dientner Grasberge, Goldberggruppe Nord, Goldberggruppe Alpenhauptkamm, Tennengebirge, Gosaukamm, Pongauer Grasberge, Niedere Tauern Nord, Niedere Tauern Alpenhauptkamm, Niedere Tauern Süd, Ankogelgruppe, Muhr, Nockberge



Avalanche problems



Danger ratings

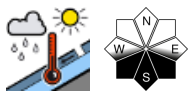
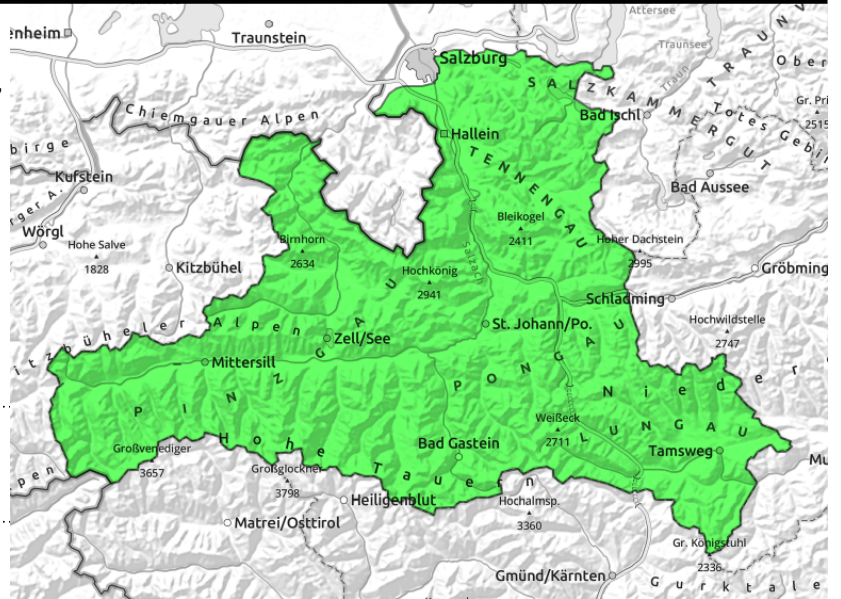


Expositions



24.02.2021, morning

Osterhorngruppe, Gamsfeldgruppe, Untersbergstock, Steinernes Meer, Hochkönig, Hagengebirge, Göllstock, Chiemgauer Alpen, Heutal, Reiteralpe, Loferer und Leoganger Steinberge, Kitzbüheler Alpen, Glemmtal, Oberpinzgauer Grasberge, Großvenedigergruppe Nord, Großvenedigergruppe Alpenhauptkamm, Glocknergruppe Nord, Glocknergruppe Alpenhauptkamm, Dientner Grasberge, Goldberggruppe Nord, Goldberggruppe Alpenhauptkamm, Tennengebirge, Gosaukamm, Pongauer Grasberge, Niedere Tauern Nord, Niedere Tauern Alpenhauptkamm, Niedere Tauern Süd, Ankogelgruppe, Muhr, Nockberge



Daytime cycle of naturally triggered avalanche activity, heavily dependent on aspect of slope

Starting at midday: increasingly frequent ground-level / wet-snow avalanches

Avalanche danger is subject to a daytime cycle ranging from LOW to MODERATE. In early and late morning, mostly stable conditions reign. In isolated cases at high and high-alpine altitudes on shady extremely steep slopes, a dry slab avalanche can trigger. Starting at midday, increasingly frequent small-to-medium sized ground-level and superficial wet-snow avalanches (also triggerable by skiers) can be expected in very steep south-facing terrain.

Snowpack structure

The snowpack has settled well, the layers are generally well bonded with one another. Melt-freeze crusts dominate. During the course of the morning, firn snow is generated on sunny slopes. As of midday the snowpack can be quite wet superficially. On north-facing slopes the snowpack is still dry.

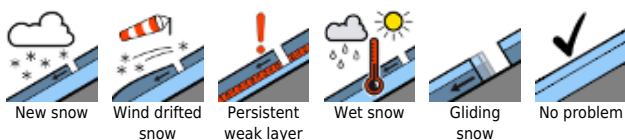
Weather

Following a night of clear skies it will be sunny (but hazy due to Sahara dust, making visibility poor). Winds will be light. At 2000 m: 7 degrees; at 3000 m: 3 degrees.

Outlook

Springtime conditions will continue, with stable conditions in early and late morning.

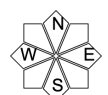
Avalanche problems



Danger ratings

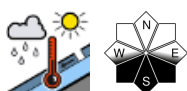
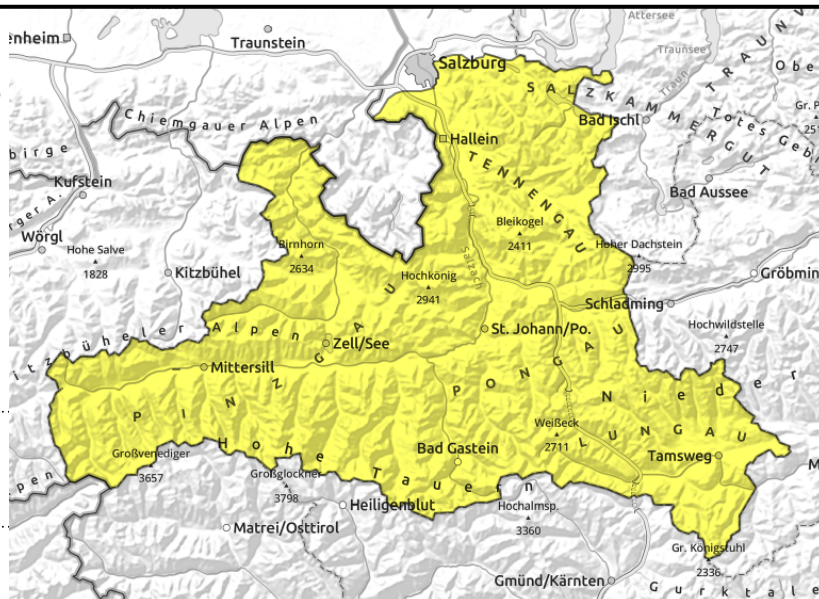


Expositions



24.02.2021, afternoon

Osterhorngruppe, Gamsfeldgruppe, Untersbergstock, Steinernes Meer, Hochkönig, Hagengebirge, Göllstock, Chiemgauer Alpen, Heutal, Reiteralpe, Loferer und Leoganger Steinberge, Kitzbüheler Alpen, Glemmtal, Oberpinzgauer Grasberge, Großvenedigergruppe Nord, Großvenedigergruppe Alpenhauptkamm, Glocknergruppe Nord, Glocknergruppe Alpenhauptkamm, Dientner Grasberge, Goldberggruppe Nord, Goldberggruppe Alpenhauptkamm, Tennengebirge, Gosaukamm, Pongauer Grasberge, Niedere Tauern Nord, Niedere Tauern Alpenhauptkamm, Niedere Tauern Süd, Ankogelgruppe, Muhr, Nockberge



Daytime cycle of naturally triggered avalanche activity, heavily dependent on aspect of slope

Starting at midday: increasingly frequent ground-level / wet-snow avalanches

Avalanche danger is subject to a daytime cycle ranging from LOW to MODERATE. In early and late morning, mostly stable conditions reign. In isolated cases at high and high-alpine altitudes on shady extremely steep slopes, a dry slab avalanche can trigger. Starting at midday, increasingly frequent small-to-medium sized ground-level and superficial wet-snow avalanches (also triggerable by skiers) can be expected in very steep south-facing terrain.

Snowpack structure

The snowpack has settled well, the layers are generally well bonded with one another. Melt-freeze crusts dominate. During the course of the morning, firn snow is generated on sunny slopes. As of midday the snowpack can be quite wet superficially. On north-facing slopes the snowpack is still dry.

Weather

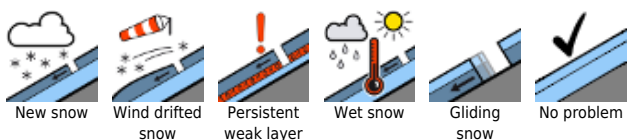
Following a night of clear skies it will be sunny (but hazy due to Sahara dust, making visibility poor). Winds will be light. At 2000 m: 7 degrees; at 3000 m: 3 degrees.

Outlook

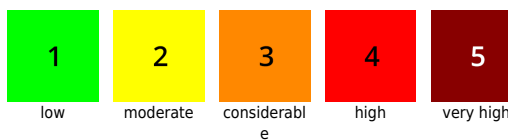
Springtime conditions will continue, with stable conditions in early and late morning.

Translated by Jeffrey McCabe, www.creativtrans.com

Avalanche problems



Danger ratings



Expositions

