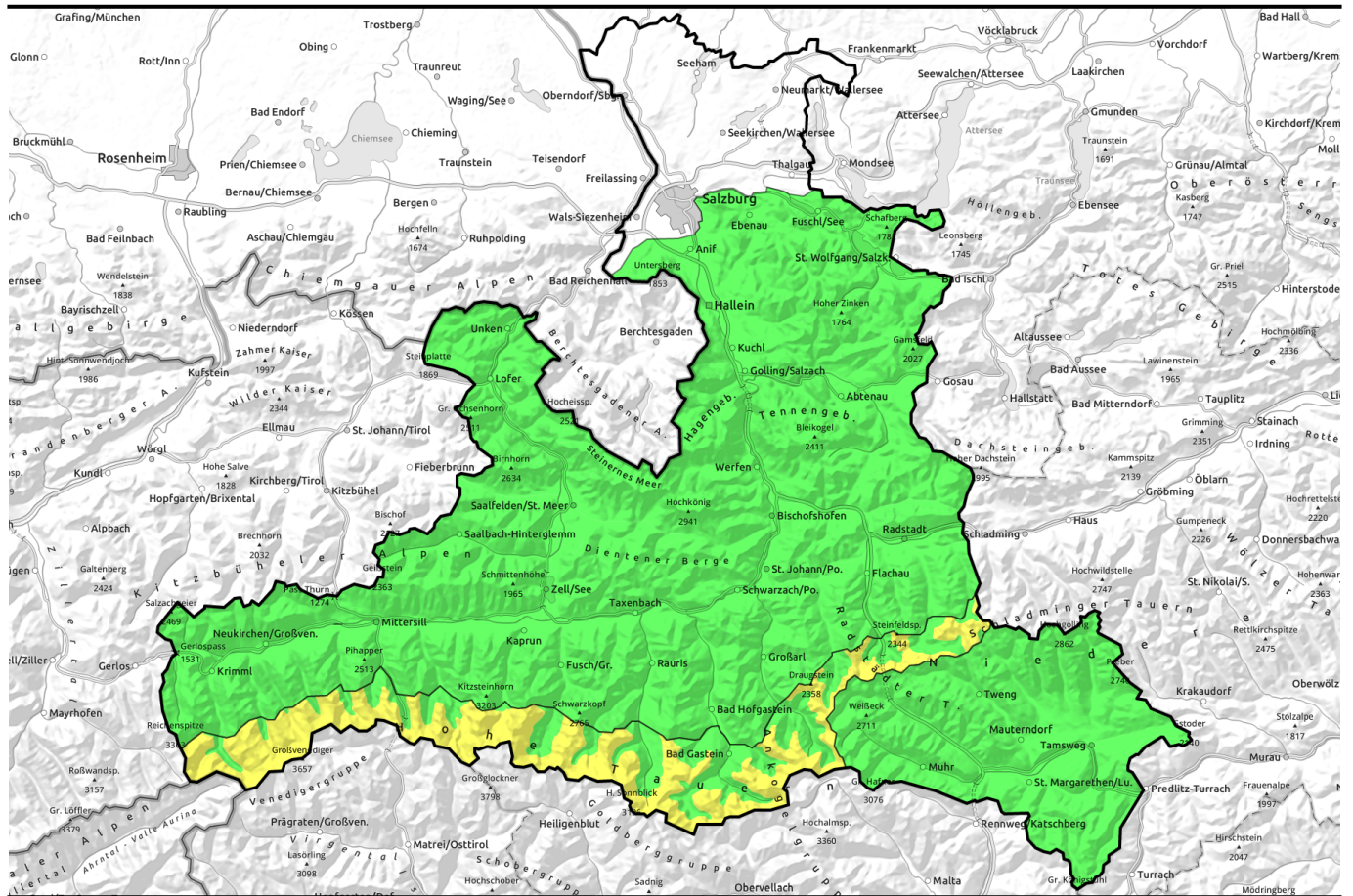


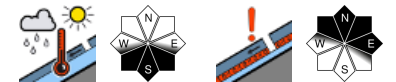
22.02.2021, morning



Springtime conditions with daytime cycle

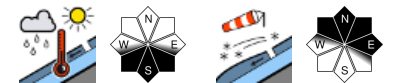


Osterhorngruppe, Gamsfeldgruppe, Untersbergstock, Tennengebirge, Gosaukamm, Steinernes Meer, Hochkönig, Hagengebirge, Göllstock, Chiemgauer Alpen, Heutal, Reiteralpe, Loferer und Leoganger Steinberge, Kitzbüheler Alpen, Glemmtal, Oberpinzgauer Grasberge, Großvenedigergruppe Nord, Glocknergruppe Nord, Goldberggruppe Nord, Dientner Grasberge, Pongauer Grasberge, Niedere Tauern Nord, Niedere Tauern Süd, Ankogelgruppe, Muhr, Nockberge

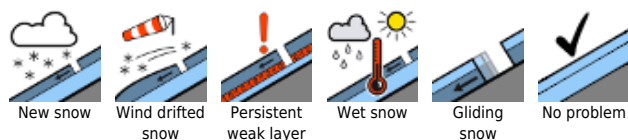


2000 m

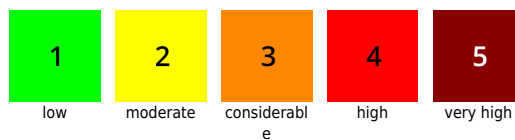
Großvenedigergruppe Alpenhauptkamm, Glocknergruppe Alpenhauptkamm, Niedere Tauern Alpenhauptkamm, Goldberggruppe Alpenhauptkamm



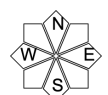
Avalanche problems



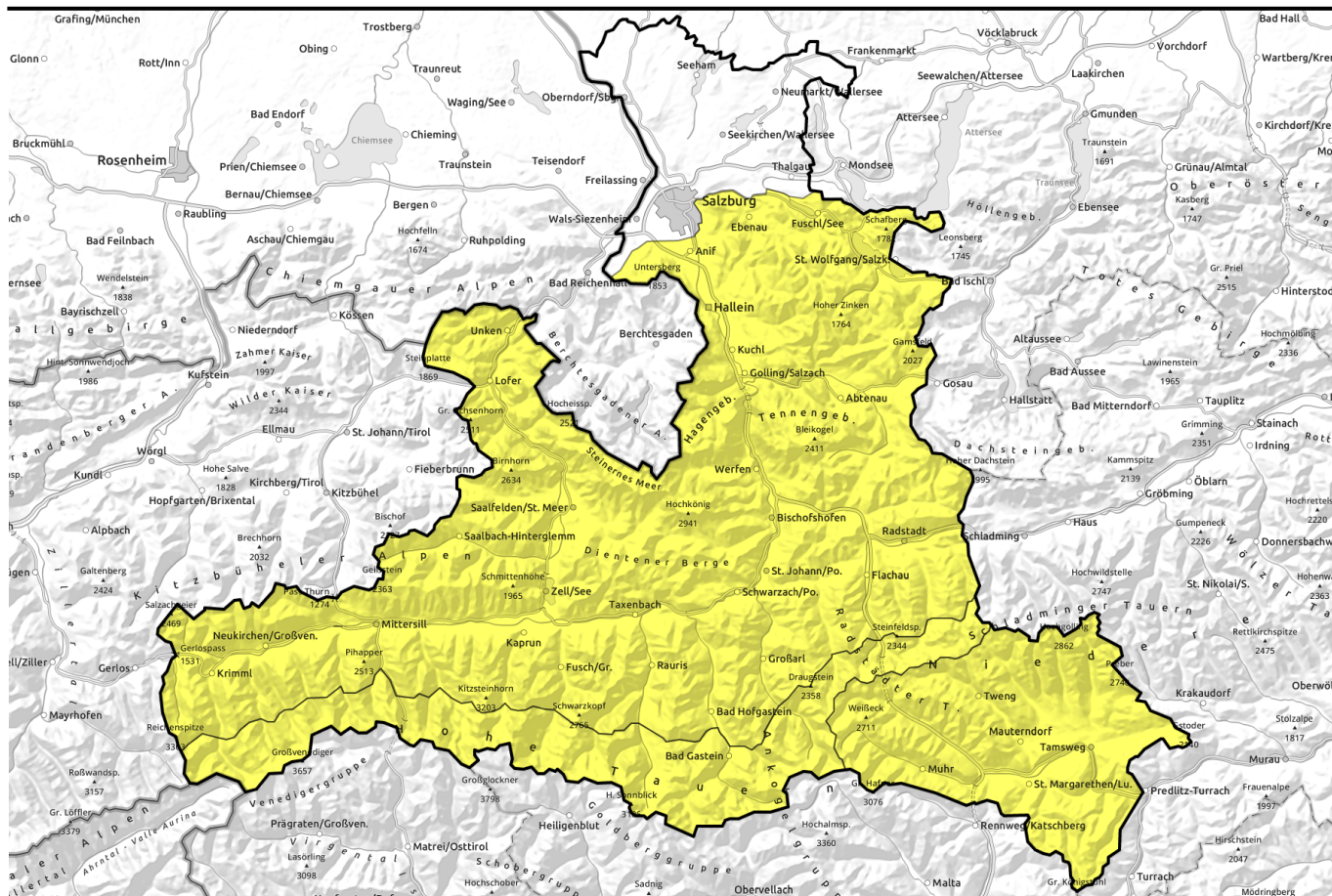
Danger ratings



Expositions



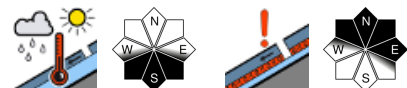
22.02.2021, afternoon



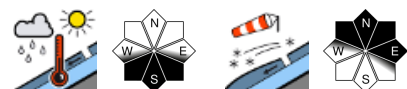
Frühjahrsverhältnisse mit Tagesgang



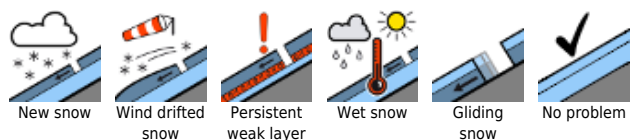
Osterhorngruppe, Gamsfeldgruppe, Untersbergstock, Tennengebirge, Gosaukamm, Steinernes Meer, Hochkönig, Hagengebirge, Göllstock, Chiemgauer Alpen, Heutal, Reiteralpe, Loferer und Leoganger Steinberge, Kitzbüheler Alpen, Glemmtal, Oberpinzgauer Grasberge, Großvenedigergruppe Nord, Glocknergruppe Nord, Goldberggruppe Nord, Dientner Grasberge, Pongauer Grasberge, Niedere Tauern Nord, Niedere Tauern Süd, Ankogelgruppe, Muhr, Nockberge



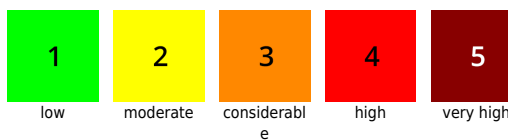
Großvenedigergruppe Alpenhauptkamm, Glocknergruppe Alpenhauptkamm, Niedere Tauern Alpenhauptkamm, Goldberggruppe Alpenhauptkamm



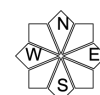
Avalanche problems



Danger ratings

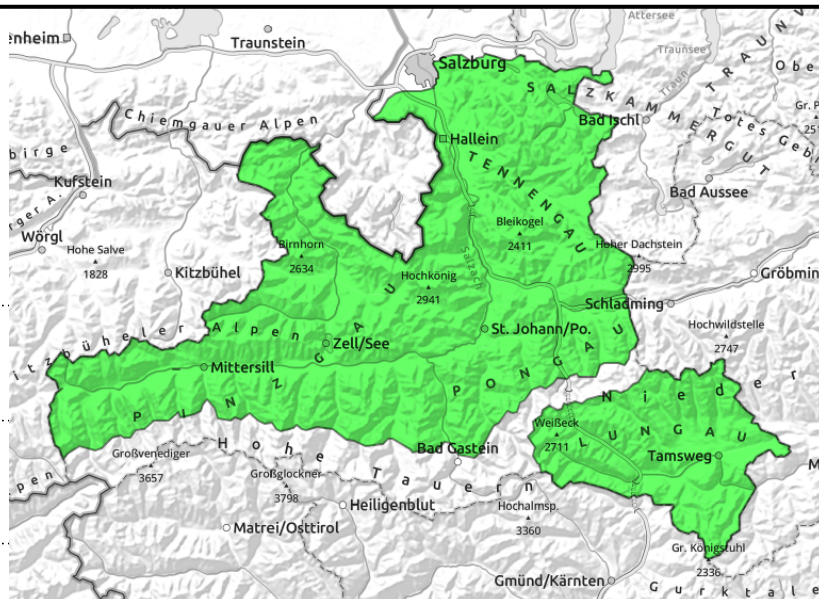


Expositions



22.02.2021, morning

Osterhorngruppe, Gamsfeldgruppe, Untersbergstock, Tennengebirge, Gosaukamm, Steinernes Meer, Hochkönig, Hagengebirge, Göllstock, Chiemgauer Alpen, Heutal, Reiteralpe, Loferer und Leoganger Steinberge, Kitzbüheler Alpen, Glemmtal, Oberpinzgauer Grasberge, Großvenedigergruppe Nord, Glocknergruppe Nord, Goldberggruppe Nord, Dientner Grasberge, Pongauer Grasberge, Niedere Tauern Nord, Niedere Tauern Süd, Ankogelgruppe, Muhr, Nockberge



daytime cycle of naturally triggered avalanche activity



triggerable in few spots in outlying terrain

Southern aspect ground-level and wet-snow avalanches starting at midday

In the morning avalanche danger is LOW. In isolated cases on high and high-alpine shady slopes (NW-N-NE-E) in extremely steep terrain, a slab avalanche can be triggered, though the risk of being forced to take a fall or being swept along outweighs.

In the afternoon, avalanche danger is MODERATE. On south-facing steep slopes, ground-level and superficial wet-snow avalanches can be expected, also triggered by skiers.

Snowpack structure

The snowpack has settled well over the last few days, the intermediate layers are well bonded. Melt-freeze crusts dominate. On sunny slopes, firm snow is generated.

Weather

Sunny and mild. Very good visibility. Winds will remain mostly light. At 2000 m, 7 degrees.

Outlook

Springtime conditions with a slight daytime cycle.

Avalanche problems



New snow



Wind drifted snow



Persistent weak layer



Wet snow



Gliding snow



No problem

Danger ratings



1

low



2

moderate



3

considerable



4

high



5

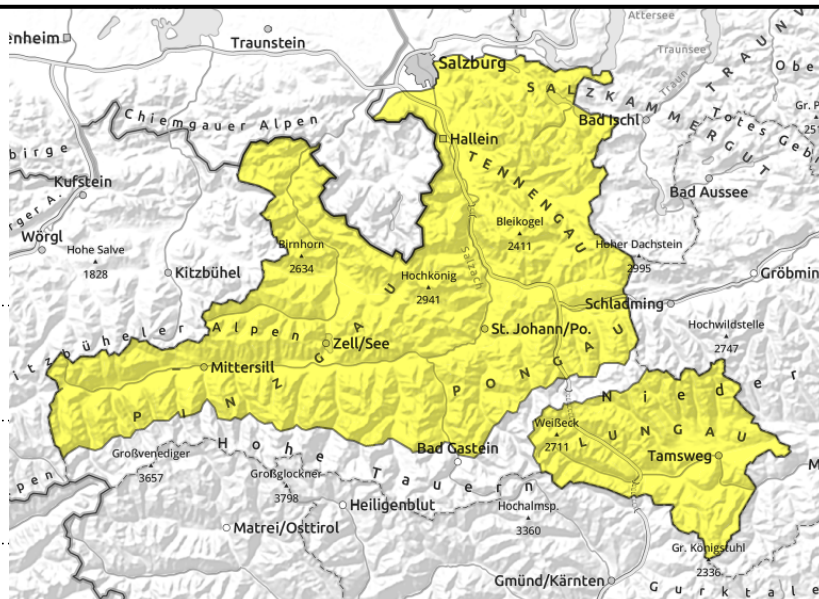
very high

Expositions



22.02.2021, afternoon

Osterhorngruppe, Gamsfeldgruppe, Untersbergstock, Tennengebirge, Gosaukamm, Steinernes Meer, Hochkönig, Hagengebirge, Göllstock, Chiemgauer Alpen, Heutal, Reiteralpe, Loferer und Leoganger Steinberge, Kitzbüheler Alpen, Glemmtal, Oberpinzgauer Grasberge, Großvenedigergruppe Nord, Glocknergruppe Nord, Goldberggruppe Nord, Dientner Grasberge, Pongauer Grasberge, Niedere Tauern Nord, Niedere Tauern Süd, Ankogelgruppe, Muhr, Nockberge



daytime cycle of naturally triggered avalanche activity



triggerable in few spots in outlying terrain

Southern aspect ground-level and wet-snow avalanches starting at midday

In the morning avalanche danger is LOW. In isolated cases on high and high-alpine shady slopes (NW-N-NE-E) in extremely steep terrain, a slab avalanche can be triggered, though the risk of being forced to take a fall or being swept along outweighs.

In the afternoon, avalanche danger is MODERATE. On south-facing steep slopes, ground-level and superficial wet-snow avalanches can be expected, also triggered by skiers.

Snowpack structure

The snowpack has settled well over the last few days, the intermediate layers are well bonded. Melt-freeze crusts dominate. On sunny slopes, firm snow is generated.

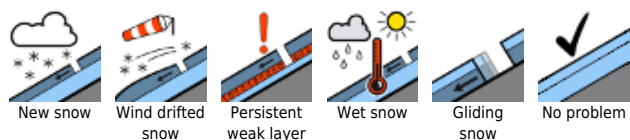
Weather

Sunny and mild. Very good visibility. Winds will remain mostly light. At 2000 m, 7 degrees.

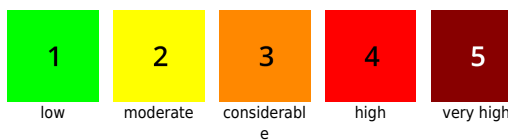
Outlook

Springtime conditions with a slight daytime cycle.

Avalanche problems



Danger ratings



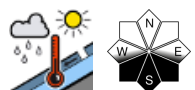
Expositions

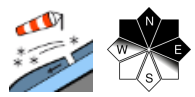


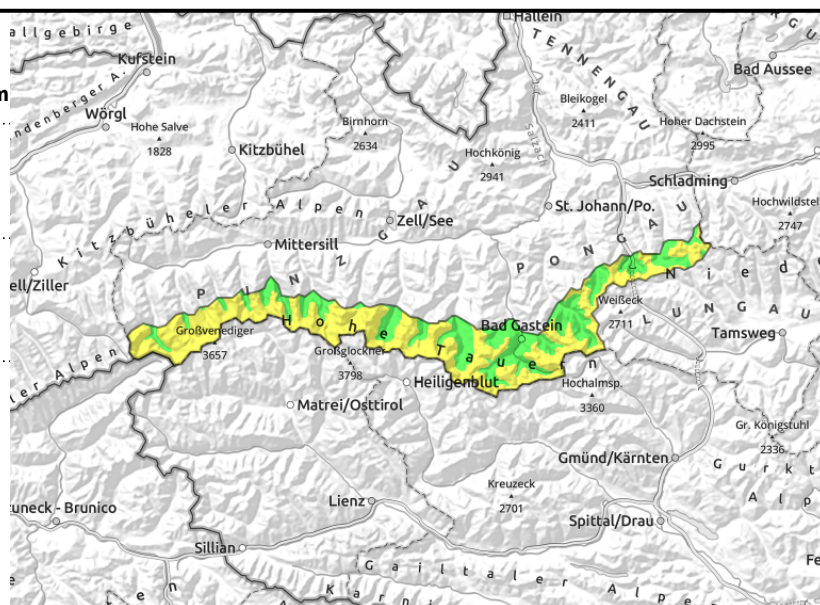
22.02.2021, morning

Großvenedigergruppe Alpenhauptkamm,
Glocknergruppe Alpenhauptkamm, Niedere Tauern
Alpenhauptkamm, Goldberggruppe Alpenhauptkamm



 daytime cycle of naturally triggered avalanche activity

 triggerable in shady and high alpine terrain, in few spots in outlying terrain



Caution: daytime cycle of avalanche danger

In the morning avalanche danger is LOW. In isolated cases on high and high-alpine shady slopes (NW-N-NE-E) in extremely steep terrain, a slab avalanche can be triggered, most likely in transitions from shallow to deeper snow. Southerly winds on Sunday afternoon and during Sunday night is generating hardened snowdrifts.

In the afternoon, avalanche danger is MODERATE. On south-facing steep slopes, ground-level and superficial wet-snow avalanches can be expected, also triggered by skiers.

Snowpack structure

The snowpack has settled well over the last few days. Melt-freeze crusts dominate. Weak layers inside the old snowpack are no longer likely to trigger.

Weather

Sunny and mild. Very good visibility. Morning southerly winds will remain brisk, slackening off significantly during the daytime. At 2000 m, 7 degrees, at 3000 m 3 degrees..

Outlook

Springtime conditions with a slight daytime cycle.

Avalanche problems



Danger ratings



Expositions



22.02.2021, afternoon

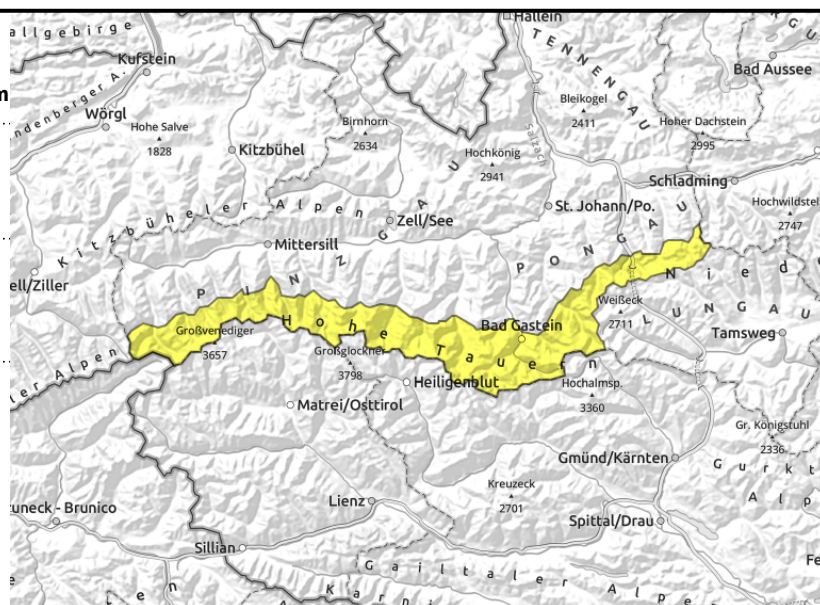
Großvenedigergruppe Alpenhauptkamm,
Glocknergruppe Alpenhauptkamm, Niedere Tauern
Alpenhauptkamm, Goldberggruppe Alpenhauptkamm



daytime cycle of naturally triggered avalanche activity



triggerable in shady and high alpine terrain, in few spots in outlying terrain



Caution: daytime cycle of avalanche danger

In the morning avalanche danger is LOW. In isolated cases on high and high-alpine shady slopes (NW-N-NE-E) in extremely steep terrain, a slab avalanche can be triggered, most likely in transitions from shallow to deeper snow. Southerly winds on Sunday afternoon and during Sunday night is generating hardened snowdrifts.

In the afternoon, avalanche danger is MODERATE. On south-facing steep slopes, ground-level and superficial wet-snow avalanches can be expected, also triggered by skiers.

Snowpack structure

The snowpack has settled well over the last few days. Melt-freeze crusts dominate. Weak layers inside the old snowpack are no longer likely to trigger.

Weather

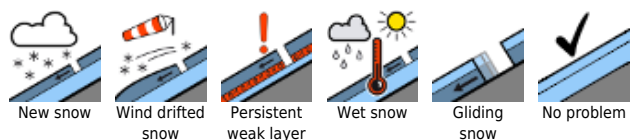
Sunny and mild. Very good visibility. Morning southerly winds will remain brisk, slackening off significantly during the daytime. At 2000 m, 7 degrees, at 3000 m 3 degrees..

Outlook

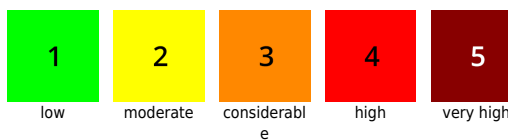
Springtime conditions with a slight daytime cycle.

Translated by Jeffrey McCabe, www.creativtrans.com

Avalanche problems



Danger ratings



Expositions

