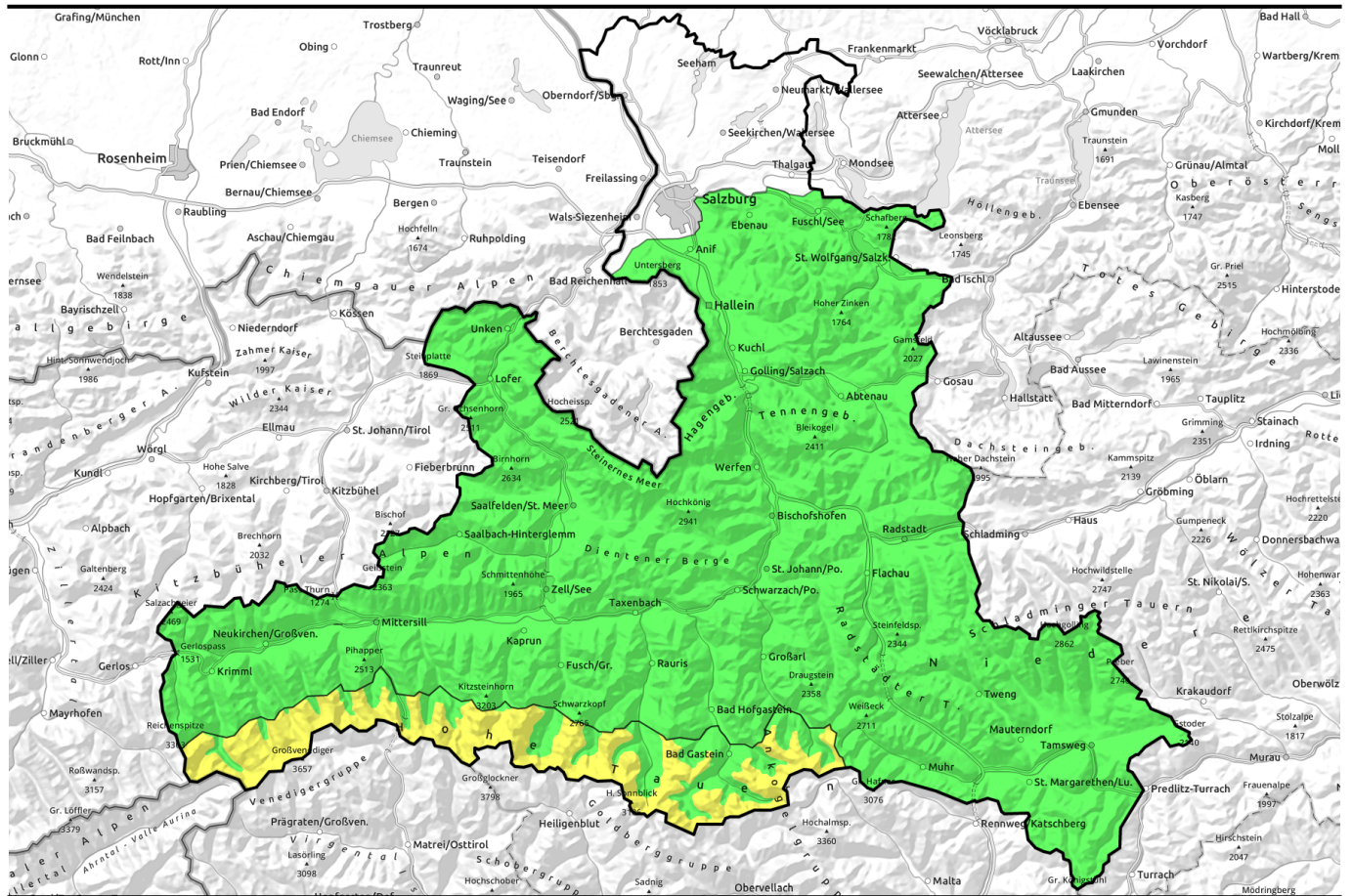


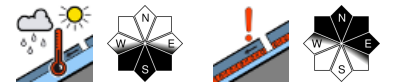
21.02.2021, morning



Springlike conditions with daytime cycle



Osterhorngruppe, Gamsfeldgruppe, Untersbergstock, Steinernes Meer, Hochkönig, Hagengebirge, Göllstock, Chiemgauer Alpen, Heutal, Reiteralpe, Loferer und Leoganger Steinberge, Tennengebirge, Gosaukamm, Pongauer Grasberge, Niedere Tauern Nord, Dientner Grasberge, Goldberggruppe Nord, Glocknergruppe Nord, Großvenedigergruppe Nord, Oberpinzgauer Grasberge, Kitzbüheler Alpen, Glemmtal, Niedere Tauern Alpenhauptkamm, Niedere Tauern Süd, Ankogelgruppe, Muhr, Nockberge

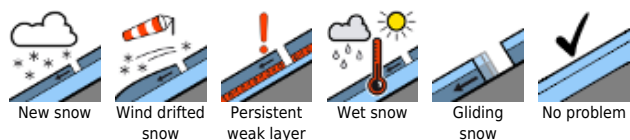


2400 m

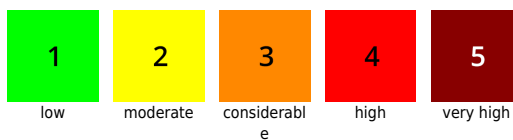
Großvenedigergruppe Alpenhauptkamm, Glocknergruppe Alpenhauptkamm, Goldberggruppe Alpenhauptkamm



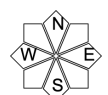
Avalanche problems



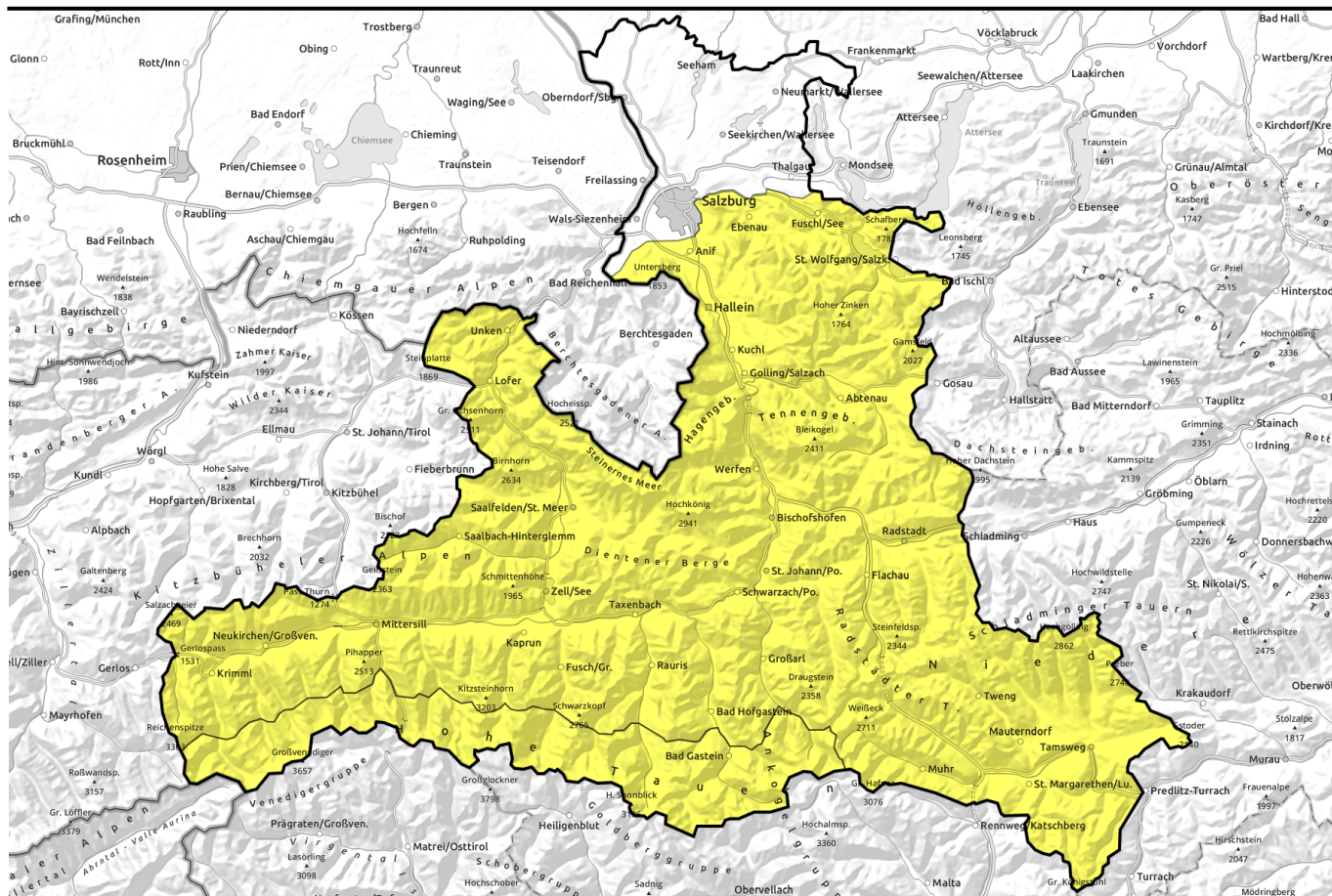
Danger ratings



Expositions



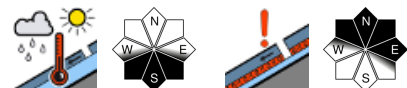
21.02.2021, afternoon



Frühjahrsbedingungen mit Tagesgang



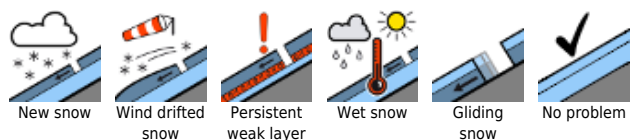
Osterhorngruppe, Gamsfeldgruppe, Untersbergstock, Steinernes Meer, Hochkönig, Hagengebirge, Göllstock, Chiemgauer Alpen, Heutal, Reiteralpe, Loferer und Leoganger Steinberge, Tennengebirge, Gosaukamm, Pongauer Grasberge, Niedere Tauern Nord, Dientner Grasberge, Goldberggruppe Nord, Glocknergruppe Nord, Großvenedigergruppe Nord, Oberpinzgauer Grasberge, Kitzbüheler Alpen, Glemmtal, Niedere Tauern Alpenhauptkamm, Niedere Tauern Süd, Ankogelgruppe, Muhr, Nockberge



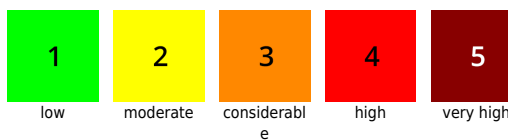
Großvenedigergruppe Alpenhauptkamm, Glocknergruppe Alpenhauptkamm, Goldberggruppe Alpenhauptkamm



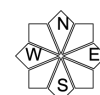
Avalanche problems



Danger ratings

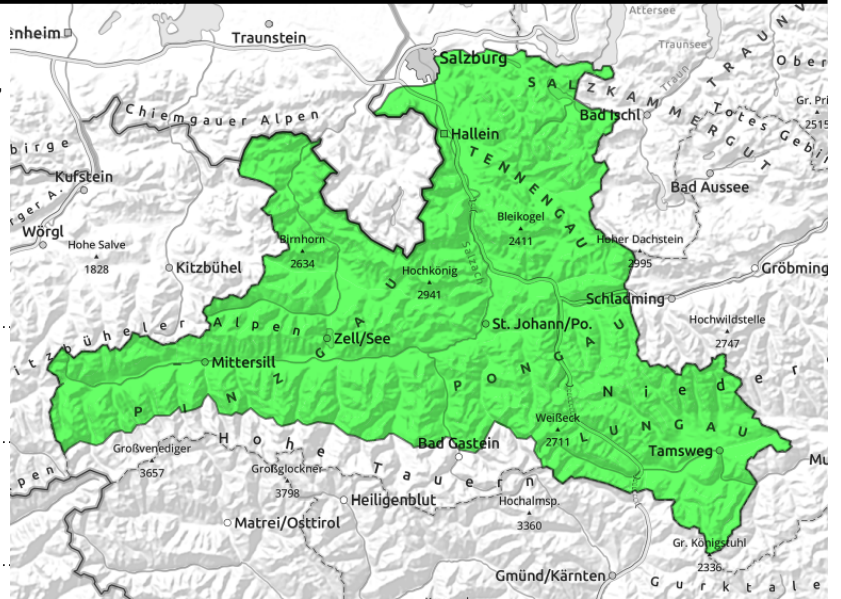


Expositions



21.02.2021, morning

Osterhorngruppe, Gamsfeldgruppe, Untersbergstock, Steinernes Meer, Hochkönig, Hagengebirge, Göllstock, Chiemgauer Alpen, Heutal, Reiteralpe, Loferer und Leoganger Steinberge, Tennengebirge, Gosaukamm, Pongauer Grasberge, Niedere Tauern Nord, Dientner Grasberge, Goldberggruppe Nord, Glocknergruppe Nord, Großvenedigergruppe Nord, Oberpinzgauer Grasberge, Kitzbüheler Alpen, Glemmtal, Niedere Tauern Alpenhauptkamm, Niedere Tauern Süd, Ankogelgruppe, Muhr, Nockberge



daytime cycle of avalanche activity



on north-facing slopes, few backcountry places triggerable

Ground-level + wet-snow avalanches on south-facing slopes as of midday

In the morning, avalanche danger is LOW. Isolated slab triggerings are possible in high and high-alpine terrain on shady, extremely steep slopes, though the risks of falling and being swept along outweigh those of being buried in snow.

In the afternoon, avalanche danger is MODERATE. On steep south-facing slopes, ground-level and superficial wet-snow avalanches can be expected, triggered by winter sports enthusiasts.

Snowpack structure

The snowpack has settled well. Melt-freeze crusts dominate. Firn snow forms on sunny slopes.

Weather

Sunny and top visibility. Warm: 6-10 degrees at 2000 m (zero-degree level over 3000 m). Winds generally light, sometimes moderate, from the south.

Outlook

Springtime conditions in February are expected to continue.

Avalanche problems



New snow



Wind drifted snow



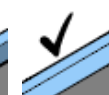
Persistent weak layer



Wet snow



Gliding snow



No problem

Danger ratings



1

low



2

moderate



3

considerable



4

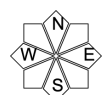
high



5

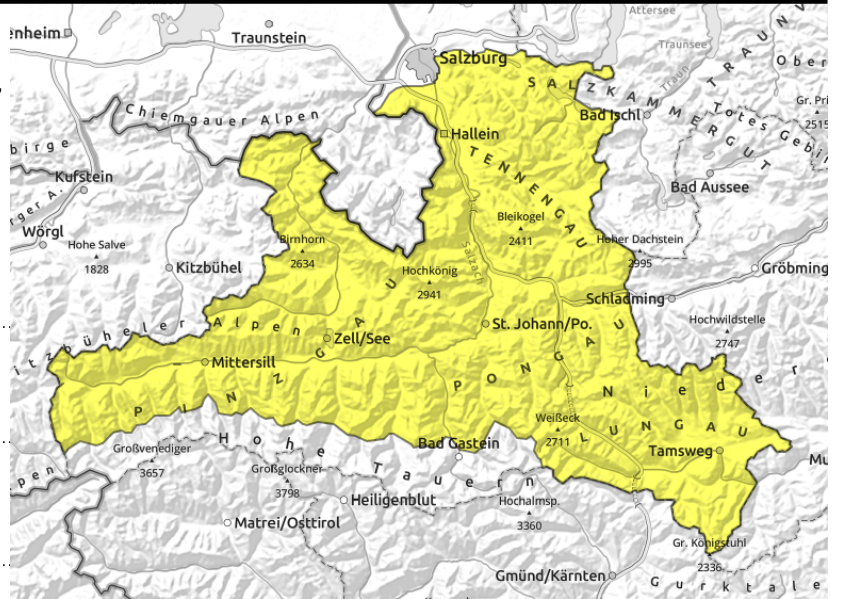
very high

Expositions



21.02.2021, afternoon

Osterhorngruppe, Gamsfeldgruppe, Untersbergstock, Steinernes Meer, Hochkönig, Hagengebirge, Göllstock, Chiemgauer Alpen, Heutal, Reiteralpe, Loferer und Leoganger Steinberge, Tennengebirge, Gosaukamm, Pongauer Grasberge, Niedere Tauern Nord, Dientner Grasberge, Goldberggruppe Nord, Glocknergruppe Nord, Großvenedigergruppe Nord, Oberpinzgauer Grasberge, Kitzbüheler Alpen, Glemmtal, Niedere Tauern Alpenhauptkamm, Niedere Tauern Süd, Ankogelgruppe, Muhr, Nockberge



daytime cycle of avalanche activity



on north-facing slopes, few backcountry places triggerable

Ground-level + wet-snow avalanches on south-facing slopes as of midday

In the morning, avalanche danger is LOW. Isolated slab triggerings are possible in high and high-alpine terrain on shady, extremely steep slopes, though the risks of falling and being swept along outweigh those of being buried in snow.

In the afternoon, avalanche danger is MODERATE. On steep south-facing slopes, ground-level and superficial wet-snow avalanches can be expected, triggered by winter sports enthusiasts.

Snowpack structure

The snowpack has settled well. Melt-freeze crusts dominate. Firn snow forms on sunny slopes.

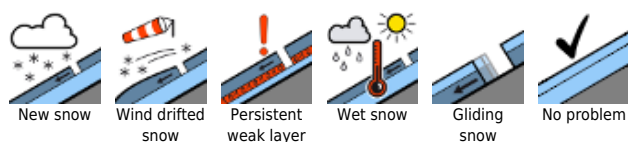
Weather

Sunny and top visibility. Warm: 6-10 degrees at 2000 m (zero-degree level over 3000 m). Winds generally light, sometimes moderate, from the south.

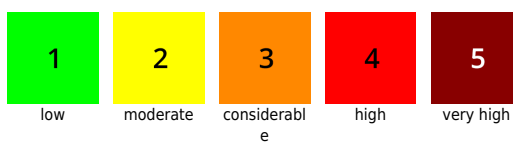
Outlook

Springtime conditions in February are expected to continue.

Avalanche problems



Danger ratings



Expositions



21.02.2021, morning

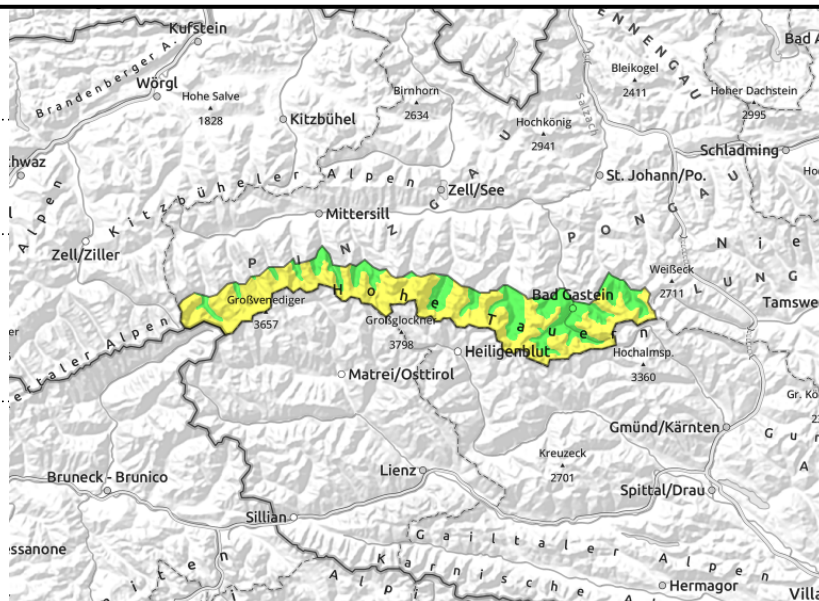
**Großvenedigergruppe Alpenhauptkamm,
Glocknergruppe Alpenhauptkamm, Goldberggruppe
Alpenhauptkamm**



in shady and high alpine terrain, triggerable in transitions from shallow to deep snow



daytime cycle of naturally triggered avalanches



Slab avalanches still triggerable in very steep terrain above 2400 m on shady slopes

Avalanche danger above 2400 m is MODERATE all day long. Slabs are triggerable, particularly by large additional loading in very steep terrain, especially in transitions from shallow to deep snow and in steep gullies.

Avalanche danger is subject to a daily daytime cycle, increasing from LOW to MODERATE below 2400 m on south-facing slopes. Starting at midday, particularly at intermediate altitudes, ground level avalanches can be expected. Also, superficial wet-snow avalanches are to be expected; these can be triggered by winter sports enthusiasts.

Snowpack structure

The snowpack has settled well during the last few days. Melt-freeze crusts dominate, turning to firn snow on sunny slopes as the day unfolds. Weak layers in the old snowpack are unlikely to trigger. The southerly foehn wind in the afternoon will not have much snow to transport, only at high and high-alpine altitudes will thin snowdrift patches be generated.

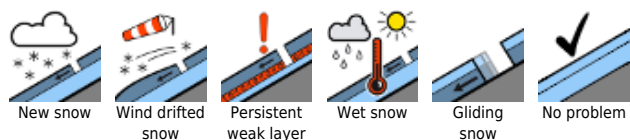
Weather

Sunny, top visibility. In the afternoon, southerly winds will intensify, reach speeds of 50 km/hr. At 2000 m: 7 degrees; at 3000 m; 3 degrees.

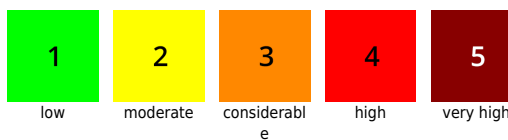
Outlook

Springlike conditions in February will continue.

Avalanche problems



Danger ratings

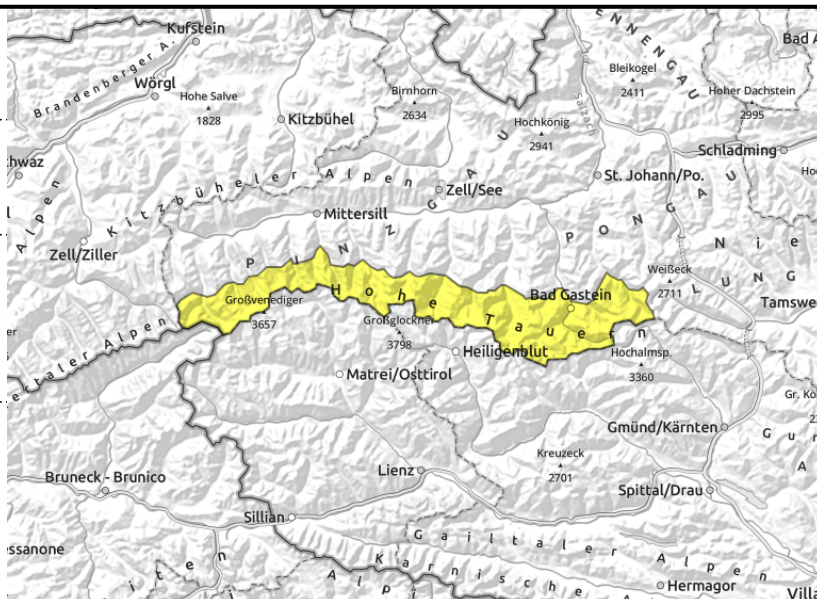


Expositions



21.02.2021, afternoon

Großvenedigergruppe Alpenhauptkamm,
Glocknergruppe Alpenhauptkamm, Goldberggruppe
Alpenhauptkamm



in shady and high alpine terrain, triggerable in transitions from shallow to deep snow



daytime cycle of naturally triggered avalanches

Slab avalanches still triggerable in very steep terrain above 2400 m on shady slopes

Avalanche danger above 2400 m is MODERATE all day long. Slabs are triggerable, particularly by large additional loading in very steep terrain, especially in transitions from shallow to deep snow and in steep gullies.

Avalanche danger is subject to a daily daytime cycle, increasing from LOW to MODERATE below 2400 m on south-facing slopes. Starting at midday, particularly at intermediate altitudes, ground level avalanches can be expected. Also, superficial wet-snow avalanches are to be expected; these can be triggered by winter sports enthusiasts.

Snowpack structure

The snowpack has settled well during the last few days. Melt-freeze crusts dominate, turning to firn snow on sunny slopes as the day unfolds. Weak layers in the old snowpack are unlikely to trigger. The southerly foehn wind in the afternoon will not have much snow to transport, only at high and high-alpine altitudes will thin snowdrift patches be generated.

Weather

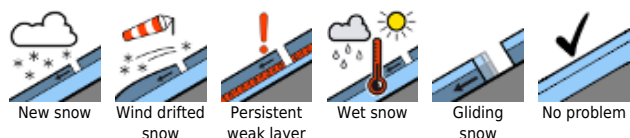
Sunny, top visibility. In the afternoon, southerly winds will intensify, reach speeds of 50 km/hr. At 2000 m: 7 degrees; at 3000 m; 3 degrees.

Outlook

Springlike conditions in February will continue.

Translated by Jeffrey McCabe, www.creativtrans.com

Avalanche problems



Danger ratings



Expositions

