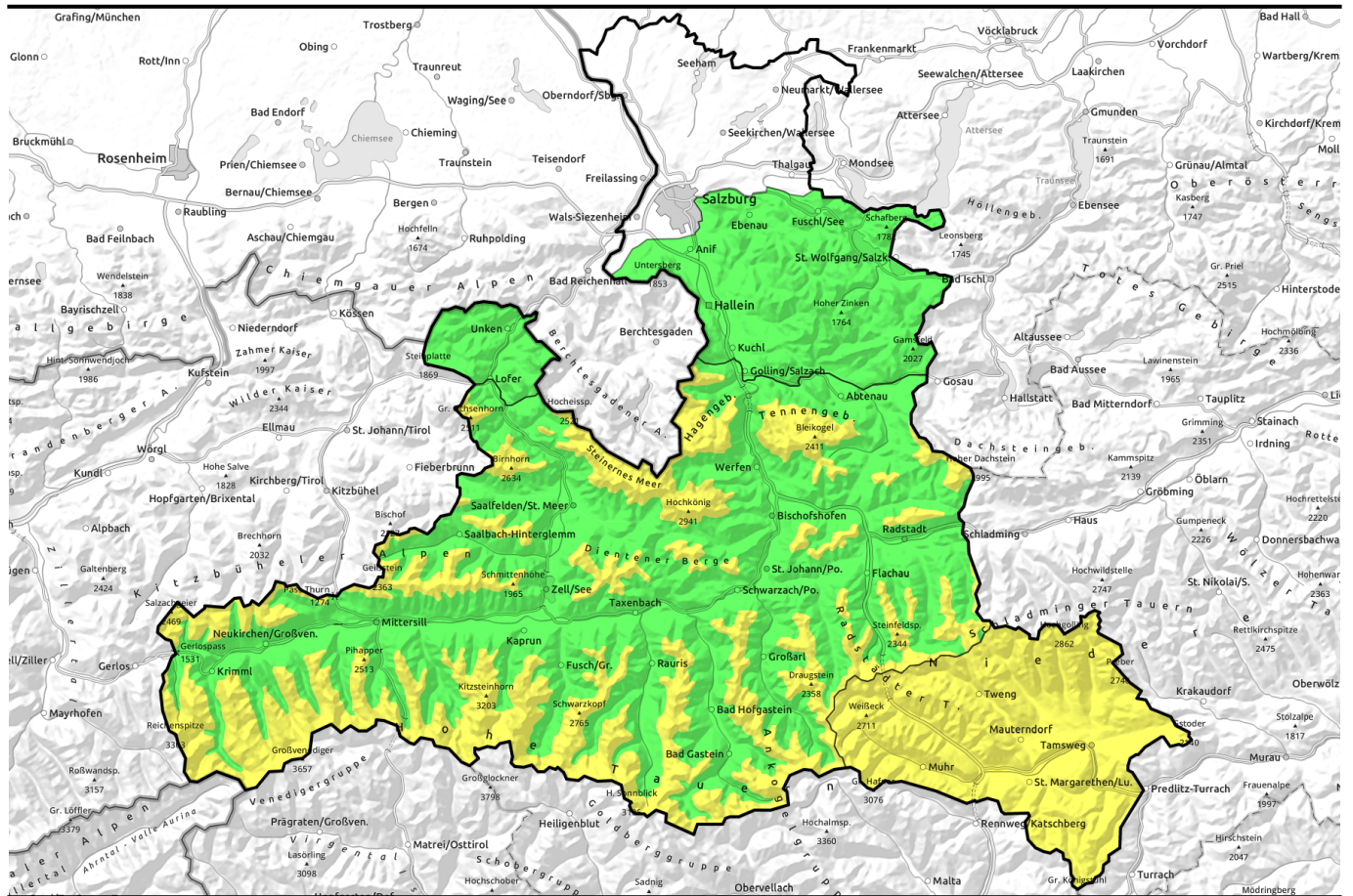


19.02.2021



Caution: old snow/snowdrifts on N/E facing slopes above 2000 m

	<p>Osterhorngruppe, Gamsfeldgruppe, Untersbergstock, Chiemgauer Alpen, Heutal, Reiteralpe</p>	
	<p>2000 m Tennengebirge, Gosaukamm, Steinernes Meer, Hochkönig, Hagengebirge, Göllstock, Loferer und Leoganger Steinberge, Kitzbüheler Alpen, Glemmtal, Oberpinzgauer Grasberge, Großvenedigergruppe Nord, Dientner Grasberge, Pongauer Grasberge, Niedere Tauern Nord, Niedere Tauern Alpenhauptkamm, Goldberggruppe Nord, Goldberggruppe Alpenhauptkamm, Glocknergruppe Nord, Glocknergruppe Alpenhauptkamm, Großvenedigergruppe Alpenhauptkamm</p>	
	<p>Ankogelgruppe, Muhr, Nockberge, Niedere Tauern Süd</p>	

Avalanche problems



Danger ratings

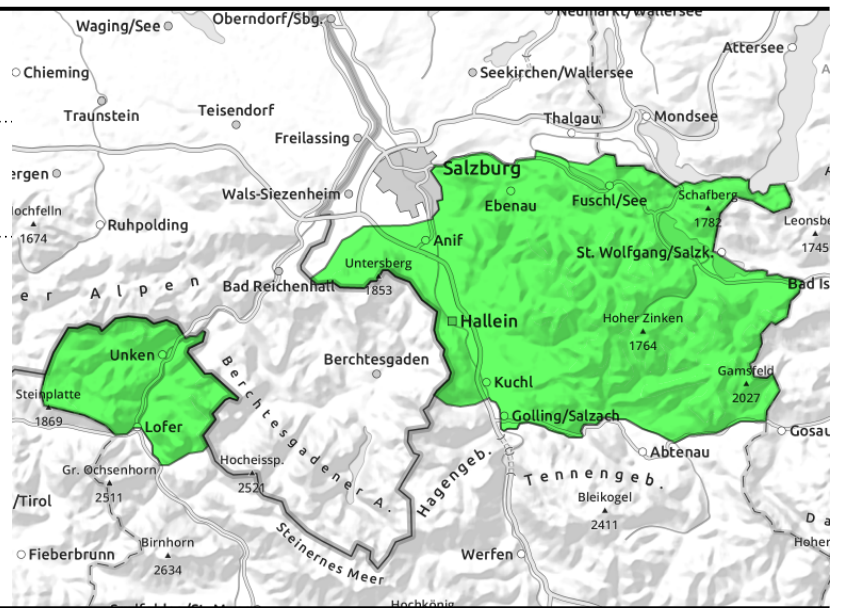
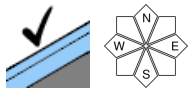


Expositions



19.02.2021

**Osterhorngruppe, Gamsfeldgruppe,
Untersbergstock, Chiemgauer Alpen, Heutal,
Reiteralpe**



Stable snowpack

Low avalanche danger, small slab avalanches possibly triggerable on steep N/E facing slopes, danger of being swept along and taking a fall outweigh.

Snowpack structure

Stable snowpack, melt-freeze crusts dominate. Due to warmth, weak layers have been decimated in old snowpack.

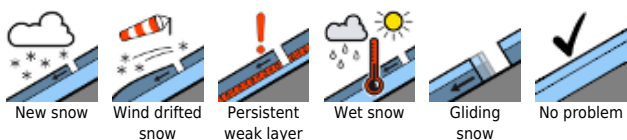
Weather

Clouds dominate, sunshine will be rare. A few snowflakes or raindrops. In the afternoon, improving visibility. Little wind. At 1500 m: 2-5 degrees.

Outlook

Springlike situation starting on Saturday, slight daytime danger cycle.

Avalanche problems



Danger ratings

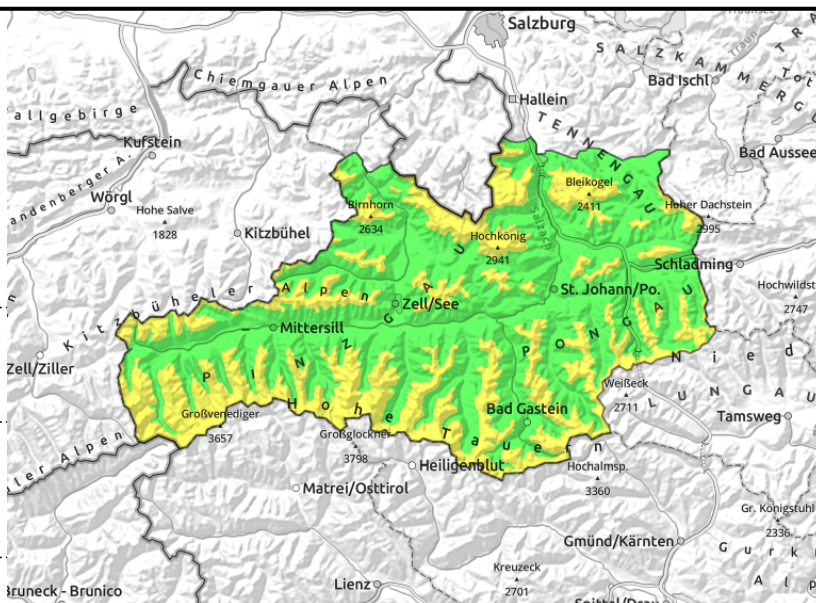


Expositions



19.02.2021

Tennengebirge, Gosaukamm, Steinernes Meer, Hochkönig, Hagengebirge, Göllstock, Loferer und Leoganger Steinberge, Kitzbüheler Alpen, Glemmtal, Oberpinzgauer Grasberge, Großvenedigergruppe Nord, Dientner Grasberge, Pongauer Grasberge, Niedere Tauern Nord, Niedere Tauern Alpenhauptkamm, Goldberggruppe Nord, Goldberggruppe Alpenhauptkamm, Glocknergruppe Nord, Glocknergruppe Alpenhauptkamm, Großvenedigergruppe Alpenhauptkamm



triggerable in transitions from shallow to deep snow, in shady and high alpine terrain



slight daytime danger cycle of naturally triggered avalanches

Avoid very steep terrain at high and high alpine altitudes

Avalanche danger above 2000 m is MODERATE, below that altitude danger is LOW. Small-to-medium slabs can be triggered in E/N facing slopes (most recent snowdrifts + old-snow problem, respectively) in very steep terrain often by minimum additional loading. Transitions from shallow to deep snow and entry points into steep gullies are the most critical.

Slight daytime cycle can lead to isolated glide-snow and small loose-snow avalanches on steep sunny slopes at low and intermediate altitudes.

Snowpack structure

Melt freeze crusts often dominate. On sunny slopes they can transform to firn. West-facing slopes, plateaus and combs are often utterly windblown. Gullies with older drifts are filled. Powder still exists on shady slopes in in wind-protected zones. The most recent snowdrifts from the early part of the week have not bonded well with the old snowpack at high and high alpine altitudes. On north-facing slopes, isolated weak intermediate layers are still evident inside the old snowpack.

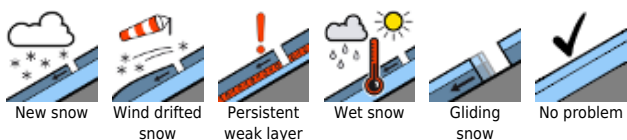
Weather

Visibility is generally good, high peaks can be partly veiled in clouds. Intermittent sunshine. Little wind. At 2000 m: -2 to +2 degrees; at 3000 m, -5 degrees.

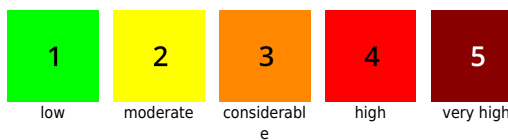
Outlook

The snowdrift-problem / old-snow problem will recede further. Slight daytime cycle / spring situation on the weekend. Air is very dry, delaying the firn, the nights are still longer than the days, thus cooling the snowpack.

Avalanche problems



Danger ratings



Expositions



19.02.2021

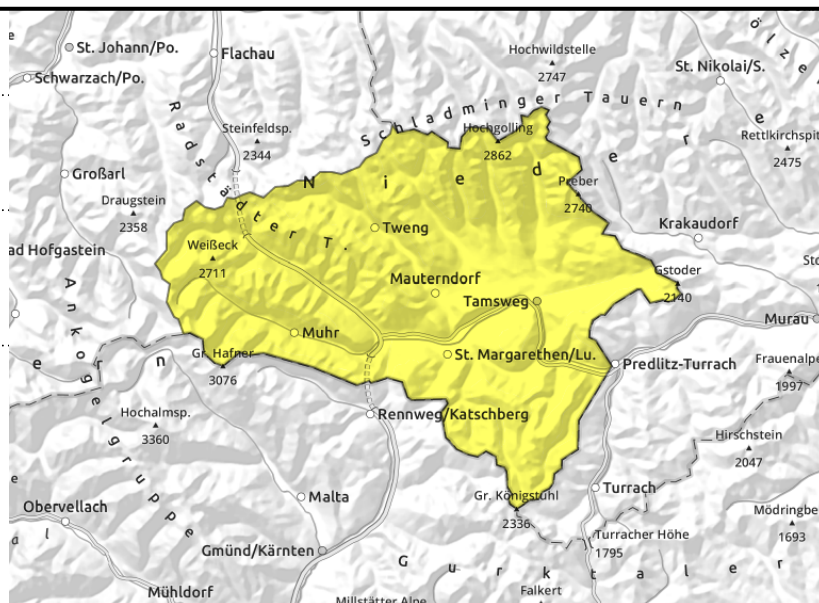
Ankogelgruppe, Muhr, Nockberge, Niedere Tauern Süd



in gullies, steep bowls, triggerable in transitions from shallow to deep snow



in extremely steep, grass-covered terrain



Old-snow problem on shady slopes. Glide-snow avalanches on sunny slopes.

Avalanche danger is MODERATE. A slab can be triggered even by minimum additional loading in extremely steep terrain, more often by large additional loading. Most avalanche prone locations occur on N/E facing slopes and in wind-loaded gullies above 2000 m
Up to 2300 m in extremely steep grass-covered terrain, glide-snow avalanches can trigger.

Snowpack structure

Melt-freeze crusts dominate, many surfaces are utterly windblown, gullies are filled with drifts. On sunny slopes, some transformation to firn is possible, The snowdrifts from the early part of the week have not bonded with the old snowpack well. Inside the old snow are persistent weak layers which, however, are now well-blanketed over.

Weather

Good visibility, quite sunny. Intermittently dense high-altitude cloudbanks will pass through. Little wind. At 2000 m: +1 degree.

Outlook

On the weekend, slight daytime danger cycle. Conditions like in springtime.

Translated by Jeffrey McCabe, www.creativtrans.com

Avalanche problems



Danger ratings



Expositions

