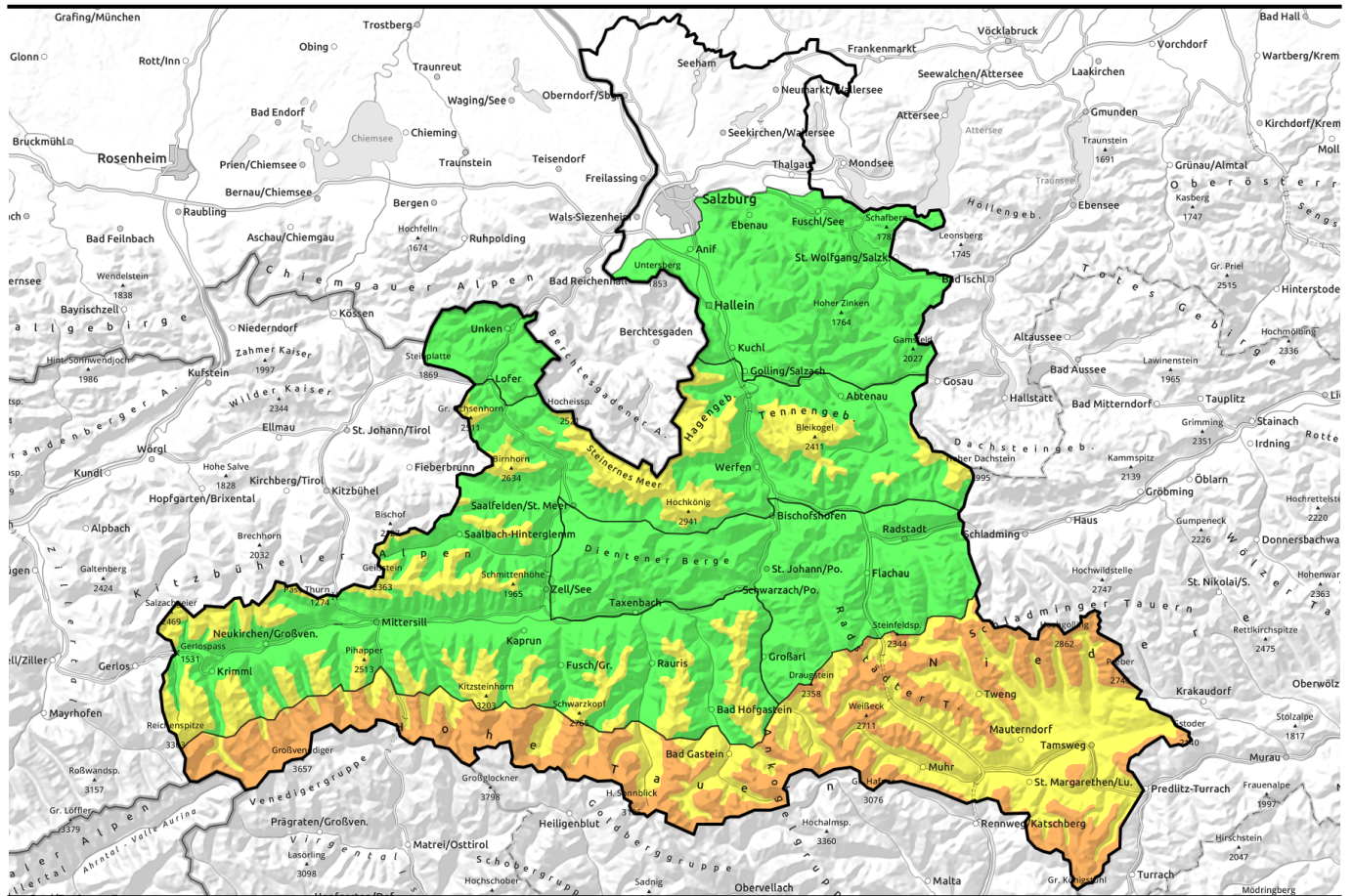


14.02.2021



Continuing caution urged in Lungau and on Tauern Main Ridge

	<p>Osterhorngruppe, Gamsfeldgruppe, Untersbergstock, Chiemgauer Alpen, Heutal, Reiteralpe, Pongauer Grasberge, Dientner Grasberge, Niedere Tauern Nord</p>	
	<p>1900 m Tennengebirge, Gosaukamm, Steinernes Meer, Hochkönig, Hagengebirge, Göllstock, Loferer und Leoganger Steinberge, Kitzbüheler Alpen, Glemmtal, Oberpinzgauer Grasberge, Glocknergruppe Nord, Goldberggruppe Nord, Großvenedigergruppe Nord</p>	
	<p>2000 m Großvenedigergruppe Alpenhauptkamm, Glocknergruppe Alpenhauptkamm, Goldberggruppe Alpenhauptkamm, Niedere Tauern Alpenhauptkamm, Niedere Tauern Süd, Ankogelgruppe, Muhr, Nockberge</p>	

Avalanche problems



Danger ratings



Expositions

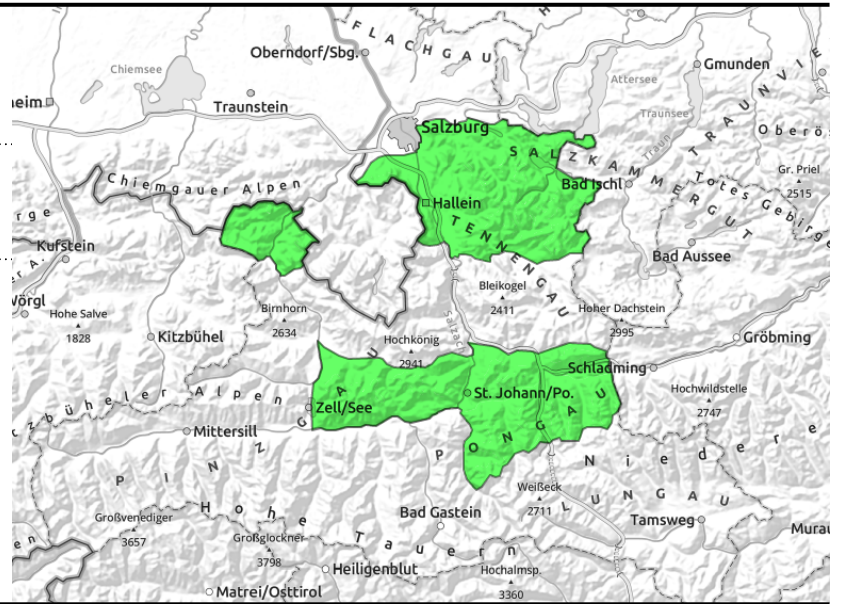


14.02.2021

**Osterhorngruppe, Gamsfeldgruppe,
Untersbergstock, Chiemgauer Alpen, Heutal,
Reiteralpe, Pongauer Grasberge, Dientner
Grasberge, Niedere Tauern Nord**



hardly any danger zones, in extremely steep terrain



Hardly any avalanche prone locations

Avalanche danger continues to be LOW, but not non-existent.

A few centimetres of cold, loose powder were deposited atop a compact old snowpack surface. Thin, small snowdrift patches could be a risk to forcing a fall and sweeping a skier along in extremely steep terrain. The concealed old-snow problem is currently likely to trigger avalanches only in extremely steep terrain where snow is shallow (40° gradients).

Snowpack structure

The 5-10 cm of very cold powder (surface temperature in early morning: -25 to -30 degrees) is quite loose and slightly wind-impacted. Snowdrift patches or masses are shallow in outlying terrain. The old snowpack below is compact. Potential weak layers in the old snow are generally well blanketed-over, unlikely to trigger.

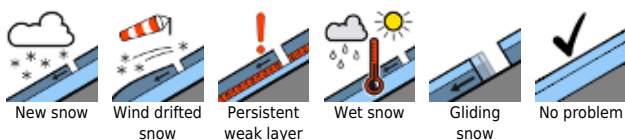
Weather

On Sunday, cloudless skies. Top visibility, very dry air. Generally light winds (max.20 km/hr). Not as cold as on Saturday. At 1500 m: -9 degrees; at 2000 m, -13 degrees.

Outlook

Little change on Monday. With noticeably higher temperatures and sunshine, south-facing slopes will be slightly metamorphosed.

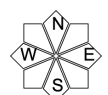
Avalanche problems



Danger ratings

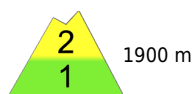


Expositions



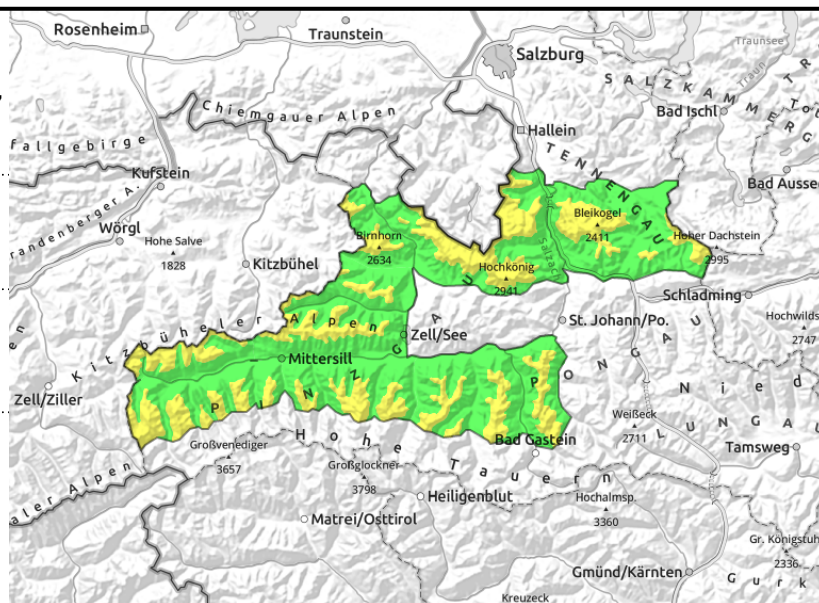
14.02.2021

Tennengebirge, Gosaukamm, Steinernes Meer, Hochkönig, Hagengebirge, Göllstock, Loferer und Leoganger Steinberge, Kitzbüheler Alpen, Glemmtal, Oberpinzgauer Grasberge, Glocknergruppe Nord, Goldberggruppe Nord, Großvenedigergruppe Nord



near ridgelines, generally thin, small

on shallow-snow north-facing slopes, above 2000 m, few spots



Favourable situation. Slight snowdrift problem and old-snow problem.

Avalanche danger above 1900 m is MODERATE, due to thin snowdrifts and the concealed old-snow problem. Below that altitude, danger is LOW.

The most recent snowdrift accumulations are triggerable in some spots in very steep terrain. Danger zones occur on E/W facing slopes and in gullies. They are not deep, easily circumvented, generally a threat to forcing a fall and being swept along. The concealed old-snow problem could lead to triggerings in extremely steep terrain (over 40° gradients) due to large additional loading in shallow-snow zones on NW-NE-E facing slopes.

Snowpack structure

The 10-15 cm of powder is loose, very cold. In early morning, the surface temperature was -25 to -30 degrees. Above 1800/2000 m easterly winds transported the snow, did their work on the surface. Small, generally thin snowdrift patches were generated. The base below is compact on wind-exposed slopes, encrusted on sunny slopes, old-powdery on north-facing slopes. More deeply embedded weak layer in the old snow are generally well blanketed-over, most likely to trigger in N/E aspects above 2000 m.

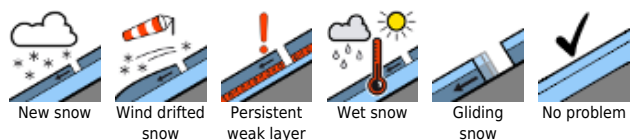
Weather

On Sunday, cloudless skies, top visibility. The air will be very dry. Mostly light winds, at summit levels intermittently at 20-30 km/hr. Not as cold as on Saturday. At 2000 m: -13 degrees; at 3000 m, -21 degrees.

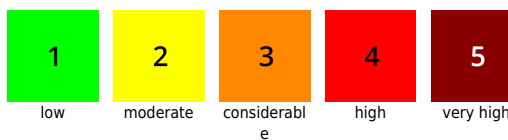
Outlook

Little change on Monday. Due to noticeably higher temperatures and sunshine, steep south-facing slopes will metamorphose slightly.

Avalanche problems



Danger ratings



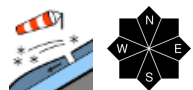
Expositions

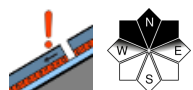


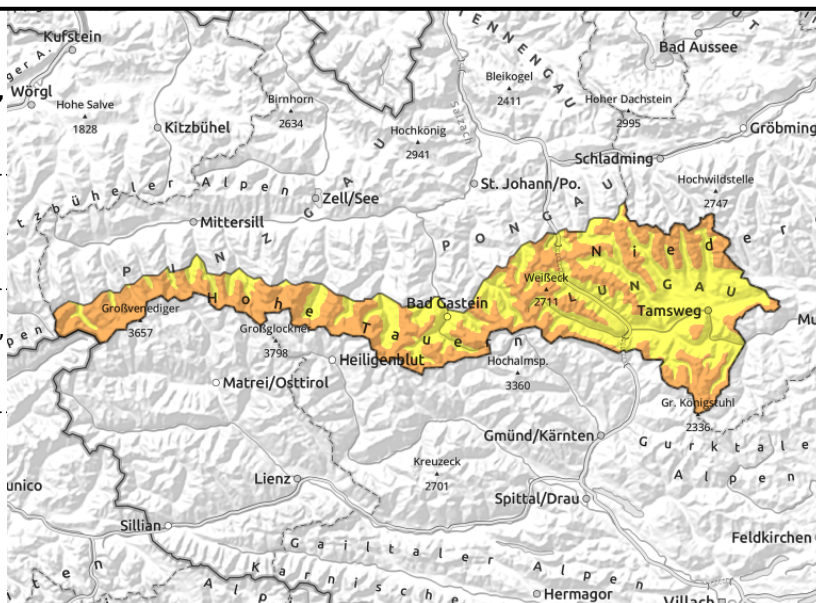
14.02.2021

Großvenedigergruppe Alpenhauptkamm, Glocknergruppe Alpenhauptkamm, Goldberggruppe Alpenhauptkamm, Niedere Tauern Alpenhauptkamm, Niedere Tauern Süd, Ankogelgruppe, Muhr, Nockberge



 near to and distant from ridges, behind protruberances

 caution on steep slopes where snow is shallow



Most recent snowdrifts triggerable in very steep terrain.

Above 2000 m the danger of slab avalanches is **CONSIDERABLE**. Main problem: recently formed snowdrift accumulations. **Restraint and knowledge of local terrain are far more significant here than in the other regions.**

The **most recent snowdrifts** can be triggered even by the weight of one single skier on very steep leeward slopes and in gullies. Avalanche prone locations occur near to and distant from ridgelines, often at forest edges. Pay attention to the signs of wind! Wind-loaded zones are easily recognized, often lie adjacent to windblown hardened surfaces. This applies to all aspects, but especially to extended southern aspects (W-S-E). The snowdrift accumulations are medium to large-sized. Triggered avalanches can, if worse comes to worst, fracture down to more deeply embedded layers of the snowpack and then grow to larger size. Due to the **old-snow problem**, very steep to extremely steep zones are more treacherous, particularly where the snow is shallow or in transitions into wind-loaded areas.

Snowpack structure

Both rounds of snowfall this week had the snow transported by winds. Recently, and also on Sunday, N/NE winds will do their work. Bowls and wind-protected leeward zones are filled to the brim with drifts and with cold powder. Elsewhere there are many surfaces with wind crusts. Inside the old snow are persistent weak layers (now 95% well blanketed-over).

Weather

On Sunday, cloudless skies, top visibility. The air will be very dry. Above the treeline, brisk to strong-velocity northerly winds (40-50 km/hr). Still very cold. At 2000 m: -13 degrees; at 3000 m: -21 degrees.

Outlook

Initially no improvement. The most recent snowdrifts continue to be the main problem.

Translated by Jeffrey McCabe, www.creativtrans.com

Avalanche problems



Danger ratings



Expositions

