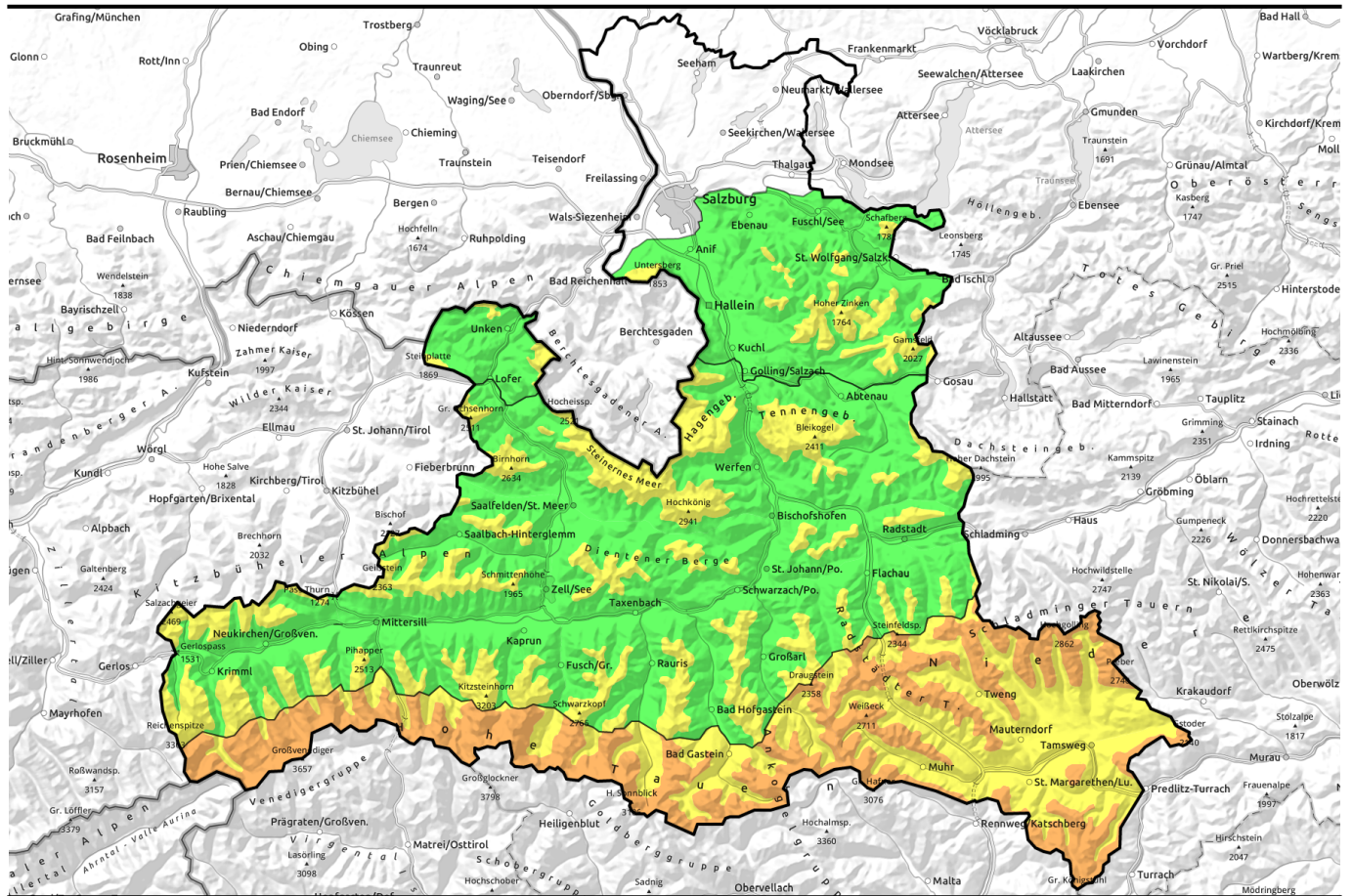


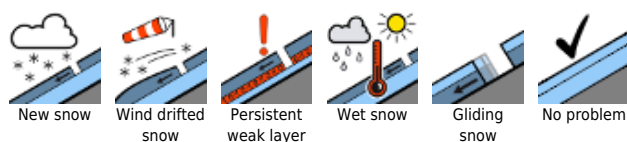
11.02.2021



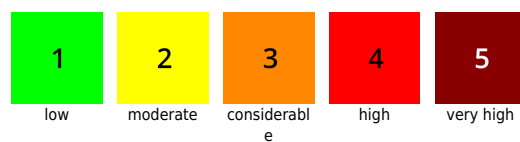
Delicate snowdrifts in Tauern and Lungau. Otherwise, fresh snow is limited.

1400 m	Osterhorngruppe, Gamsfeldgruppe, Untersbergstock, Chiemgauer Alpen, Heutal, Reiteralpe	
1600 m	Niedere Tauern Nord, Pongauer Grasberge, Loferer und Leoganger Steinberge, Kitzbüheler Alpen, Glemmtal, Steinernes Meer, Hochkönig, Hagengebirge, Göllstock, Dientner Grasberge, Tennengebirge, Gosaukamm, Goldberggruppe Nord, Oberpinzgauer Grasberge, Großvenedigergruppe Nord, Glocknergruppe Nord	
1800 m	Großvenedigergruppe Alpenhauptkamm, Glocknergruppe Alpenhauptkamm, Goldberggruppe Alpenhauptkamm, Niedere Tauern Alpenhauptkamm, Niedere Tauern Süd, Ankogelgruppe, Muhr, Nockberge	

Avalanche problems



Danger ratings

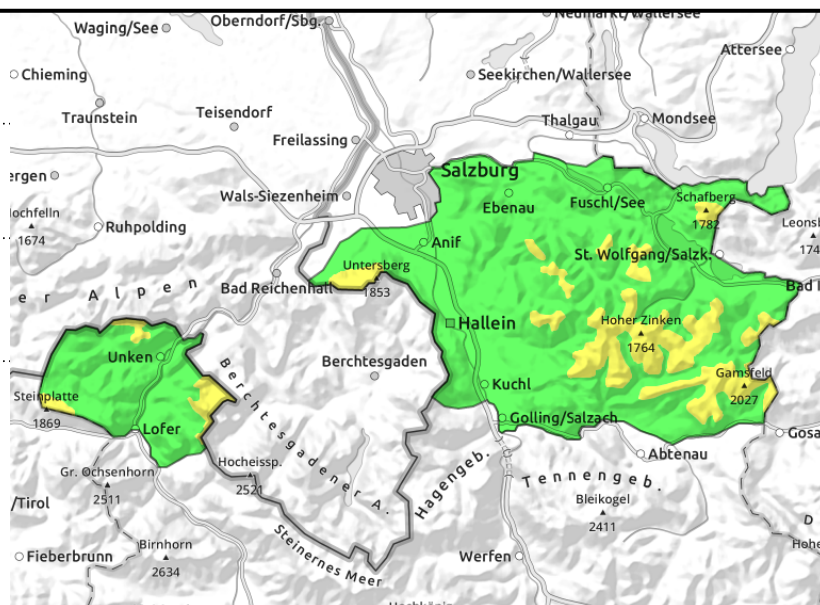
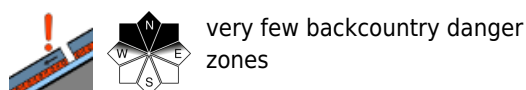
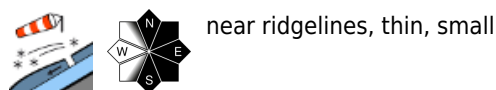


Expositions



11.02.2021

**Osterhorngruppe, Gamsfeldgruppe,
Untersbergstock, Chiemgauer Alpen, Heutal,
Reiteralpe**



Fresh, generally thin, small snowdrift accumulations

Avalanche danger above 1400 m is MODERATE, due to fresh snowdrifts. These are easily triggered in very steep terrain. They are easy to recognize (east-facing slopes, gullies), are small-spread, of limited depth, can easily be circumvented (primarily dangerous to sweep a skier along and force a fall). The concealed old-snow problem can lead to triggerings on isolated steep and extremely steep slopes (above 40° gradients) by large additional loading where the snow is shallow (NW-NE-E aspects).

Snowpack structure

About 10 cm of cold fresh snow, transported by W/NW winds to open terrain above the treeline. The old snowpack beneath it is compact. Potential weak layers inside the old snow are generally well covered, i.e. unlikely to trigger.

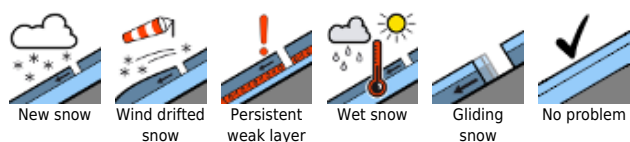
Weather

Bitter cold: at 1500 m, -15 degrees. Winds will make it feel still colder. In the morning, poor visibility, lots of fog, light snowfall. In the afternoon, skies will brighten somewhat. Towards evening, a bit of sunshine is possible. Icy cold NW wind at 30 km/hr.

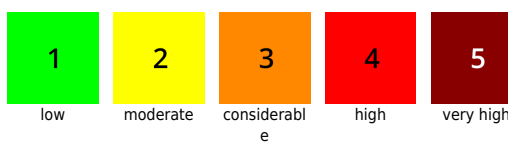
Outlook

Temperature disparities in the uppermost layers of the snowpack will change the snow over the next few days.

Avalanche problems



Danger ratings

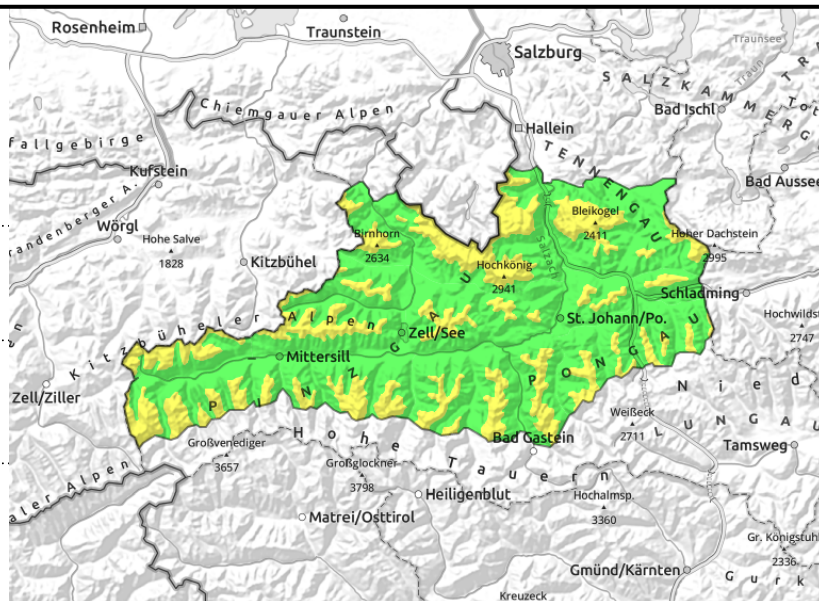


Expositions



11.02.2021

Niedere Tauern Nord, Pongauer Grasberge, Loferer und Leoganger Steinberge, Kitzbüheler Alpen, Glemmtal, Steinernes Meer, Hochkönig, Hagengebirge, Göllstock, Dientner Grasberge, Tennengebirge, Gosaukamm, Goldberggruppe Nord, Oberpinzgauer Grasberge, Großvenedigergruppe Nord, Glocknergruppe Nord



near ridge/lines, mostly thin, small, above 1600 m



avoid northern aspects where snow is shallow above 1800 m

Mixture of snowdrift problem and old-snow problem

The fresh snowdrift accumulations are easily triggered in very steep terrain. Avalanche prone locations are easily recognized (east-facing slopes, gullies). They are small-spread, of limited depth, easily circumvented (primarily a danger to sweep skiers along or force a fall). The concealed old-snow problem can lead to triggerings on extremely steep slopes (above 40° gradients) by large additional loading in shallow-snow zones in NW-NE-E aspects. Such slabs, not easily triggered, could grow to medium-to-large size.

Snowpack structure

About 10 cm of fresh snow was registered, transported by W/NW winds into open terrain above the treeline. The old snowpack beneath the drifts is compact in wind-exposed terrain, encrusted in sunny terrain, with old powder on north-facing slopes which has been partially transported by strong winds in the interim. Deeper-down potential weak layers in the old snow are generally well covered, thus, triggerable mainly in N/E aspects at 1800-2200 m.

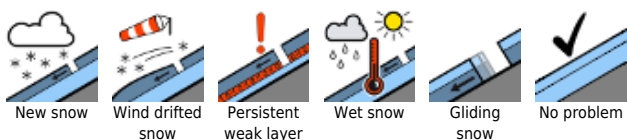
Weather

Bitter cold: at 2000 m, -19 degrees; at 3000 m, -21 degrees. Winds will intensify the feeling of cold. In the morning, a few residual clouds, occasional snowflakes. As of midday, clouds will disperse, the sun come out. Icy NW winds at 30 km/hr, above 2200 m at 40 km/hr.

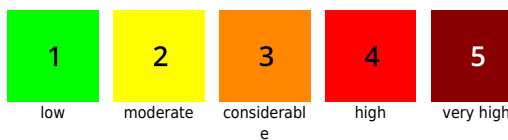
Outlook

Little change as the weekend nears. Clear nocturnal skies, very cold snowpack surfaces. The situation is being preserved by the cold, although temperature disparities in the uppermost layers of the snowpack will change the snow situation in the coming few days.

Avalanche problems



Danger ratings

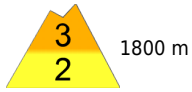


Expositions



11.02.2021

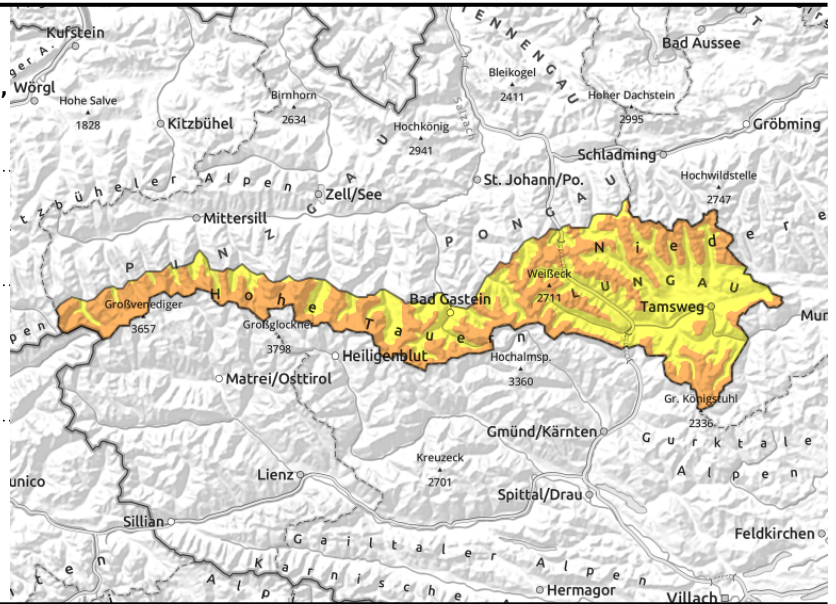
Großvenedigergruppe Alpenhauptkamm, Glocknergruppe Alpenhauptkamm, Goldberggruppe Alpenhauptkamm, Niedere Tauern Alpenhauptkamm, Niedere Tauern Süd, Ankogelgruppe, Muhr, Nockberge



wide-ranging in some areas, near to and distant from ridgelines, easily triggered



triggerable in steep terrain where snow is shallow



Wide-ranging snowdrift accumulations in many directions

Above 1800 m danger of slab avalanches is **CONSIDERABLE**. Main problem: freshly generated snowdrift accumulations.

The fresh snowdrifts are triggerable on steep to very steep slopes and in gullies even by the weight of one single skier. Avalanche prone locations are found both near to and distant from ridgelines, wherever the northerly wind reaches, also at forest edges and lower down. This applies to all aspects. Avalanches triggering from drifts are medium-to-large in size.

If worse comes to worst, triggered avalanches can fracture down deep in the old snowpack and grow to large size. Due to the old-snow problem, very steep to extremely steep zones are quite treacherous wherever snow is shallow or in transitions to windblown zones.

In zones where snowfall has been heavy or which are themselves very steep, isolated naturally triggered loose-snow and slab avalanches are possible.

Snowpack structure

The fresh, cold snow (15-20 cm) and the previous round of snowfall are being transported by strong winds from varying directions (recently from the south, currently from the north) over widespread areas. The fresh snowdrift accumulations are prone to triggering. On the one hand, there is loose powder; on the other, the drifts atop a thin melt-freeze crust. Inside the old snow, in additional, weak layers are persisting. These ugly layers are 95% well covered.

Weather

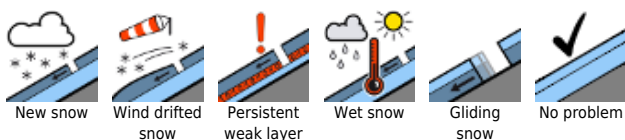
Bitter cold: at 2000 m, -19 degrees; at 3000 m, -21 degrees. Strong winds are intensifying the feeling of cold. During the morning, clouds will disperse, south of the Tauern even sooner. Generally sunny in the afternoon. On the Main Alpine Ridge and in Lungau, storm-strength northerly winds will be blowing (60 km/hr) which can extend to below the timberline.

Outlook

No significant change in avalanche danger is anticipated to begin with. Wide-ranging snowdrifts will continue to be the major threat. It will remain very cold, the northerly wind will endure for awhile.

Restraint and knowledge of local terrain are imperative.

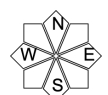
Avalanche problems



Danger ratings



Expositions



11.02.2021

Translated by Jeffrey McCabe, www.creativtrans.com

Avalanche problems



New snow



Wind drifted
snow



Persistent
weak layer



Wet snow



Gliding
snow



No problem

Danger ratings



1

low



2

moderate



3

considerabl
e



4

high



5

very high

Expositions

