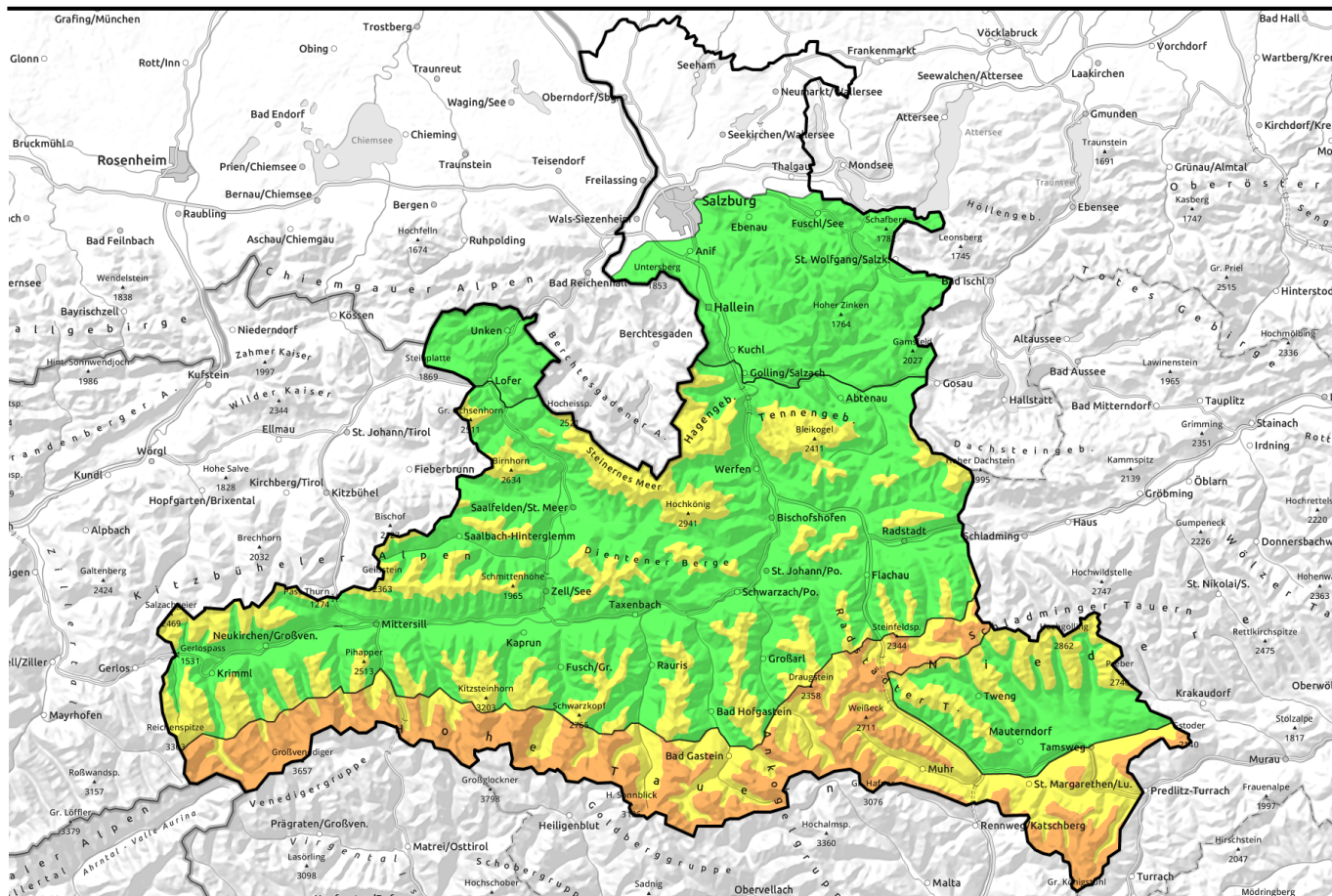


# 10.02.2021, morning



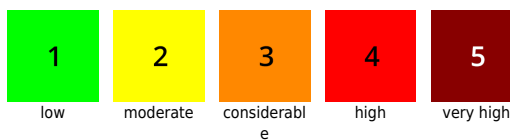
## Many snowdrift accumulations on Main Alpine Ridge. Elsewhere little fresh snow in afternoon.

	<p>Osterhorngruppe, Gamsfeldgruppe, Untersbergstock, Chiemgauer Alpen, Heutal, Reiteralpe</p>	
	<p>1800 m Tennengebirge, Gosaukamm, Steinernes Meer, Hochkönig, Hagengebirge, Göllstock, Loferer und Leoganger Steinberge, Kitzbüheler Alpen, Glemmtal, Oberpinzgauer Grasberge, Großvenedigergruppe Nord, Glocknergruppe Nord, Goldberggruppe Nord, Dientner Grasberge, Pongauer Grasberge, Niedere Tauern Nord</p>	
	<p>2000 m Großvenedigergruppe Alpenhauptkamm, Glocknergruppe Alpenhauptkamm, Goldberggruppe Alpenhauptkamm, Ankogelgruppe, Muhr, Niedere Tauern Alpenhauptkamm, Nockberge</p>	
	<p>1800 m Niedere Tauern Süd</p>	

### Avalanche problems



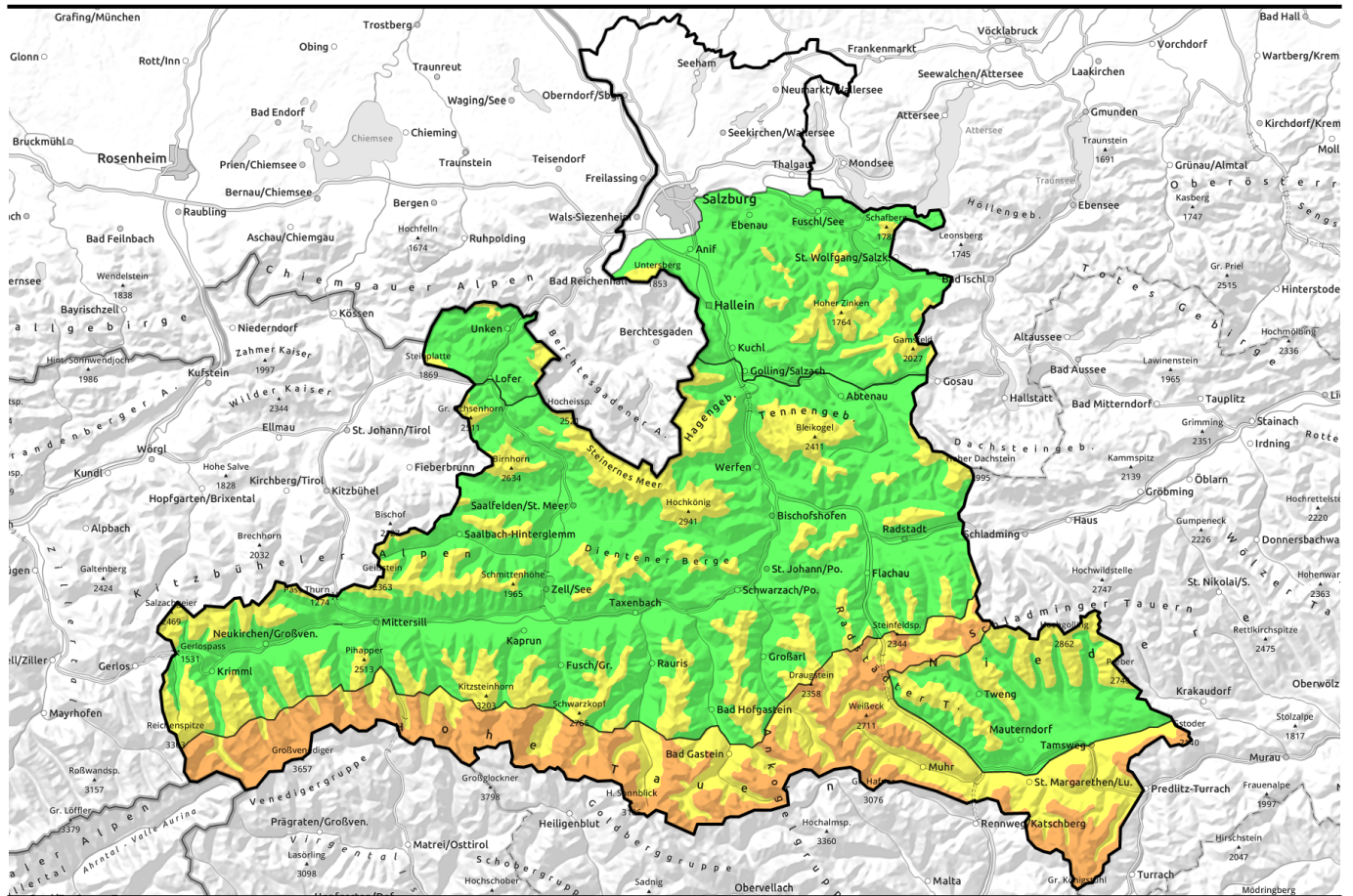
### Danger ratings



### Expositions



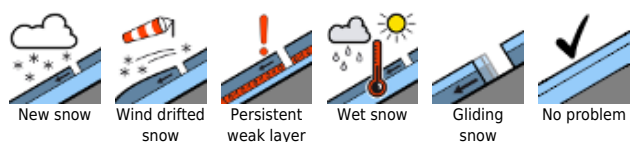
# 10.02.2021, afternoon



## Viel Tribschnee am Alpenhauptkamm, sonst wenig Neuschnee am Nachmittag

<p>1400 m</p>	<p>Osterhorngruppe, Gamsfeldgruppe, Untersbergstock, Chiemgauer Alpen, Heutal, Reiteralpe</p>	
<p>1800 m</p>	<p>Tennengebirge, Gosaukamm, Steinernes Meer, Hochkönig, Hagengebirge, Göllstock, Loferer und Leoganger Steinberge, Kitzbüheler Alpen, Glemmtal, Oberpinzgauer Grasberge, Großvenedigergruppe Nord, Glocknergruppe Nord, Goldberggruppe Nord, Dientner Grasberge, Pongauer Grasberge, Niedere Tauern Nord</p>	
<p>2000 m</p>	<p>Großvenedigergruppe Alpenhauptkamm, Glocknergruppe Alpenhauptkamm, Goldberggruppe Alpenhauptkamm, Ankogelgruppe, Muhr, Niedere Tauern Alpenhauptkamm, Nockberge</p>	

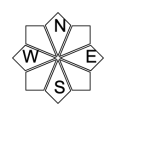
### Avalanche problems



### Danger ratings



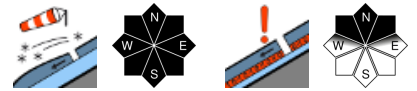
### Expositions



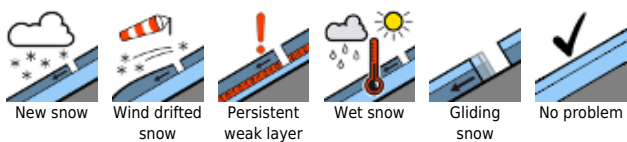
# 10.02.2021, afternoon



Niedere Tauern Süd



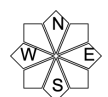
### Avalanche problems



### Danger ratings



### Expositions



# 10.02.2021, morning

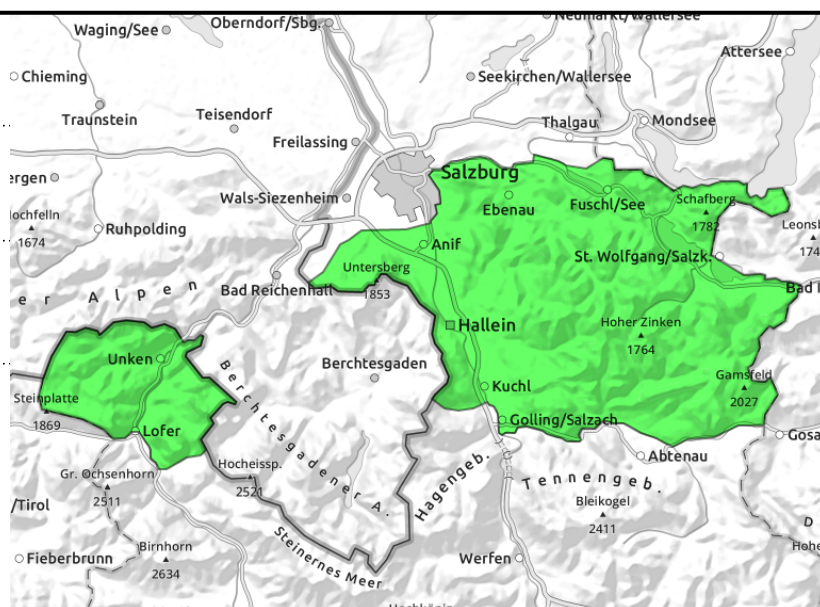
Osterhorngruppe, Gamsfeldgruppe, Untersbergstock, Chiemgauer Alpen, Heutal, Reiteralpe



very few backcountry danger zones



generating in afternoon, near ridgelines, thin, small



## Fresh, mostly thin snowdrifts generating in afternoon

Avalanche danger in the morning is LOW, rising above 1400 m in the afternoon to MODERATE. In afternoon, caution urged towards fresh snowdrifts, they can be easily triggered (small-sized, relatively thin). The covered old snow could be triggered in isolated spots in extremely steep terrain (over 40° gradient) in NW-NE-E aspects by large additional loading where snow is shallow and in transitions.

### Snowpack structure

In the morning the snowpack is stable. Old powder lies atop a firm, compact old snowpack surface. Potential weak layers in the old snow are well covered, unlikely to trigger. In the afternoon, wind and cold fresh snow will generate fresh drifts in ridgeline terrain, initially small and thin.

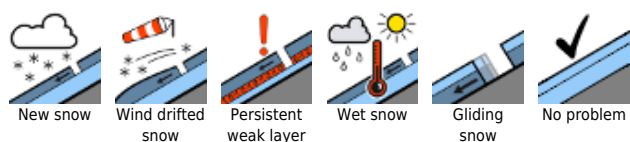
### Weather

On Wednesday the peaks will be free to begin with, although clouds above summit level will be heavy, soon creating diffuse light. As of midday, snowfall will set in. In the afternoon and evening, light to moderate snowfall (fresh snow by evening: 10-15 cm). Winds will initially be southerly, then shift to northerly, be blowing at moderate strength. At 1500 m: -3 degrees at midday, descending in the afternoon. On Wednesday night: temperatures will plummet!

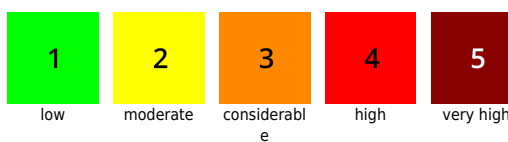
### Outlook

Bitter cold, windy. At 2000 m: -20 degrees, and winds will make it feel like -35°. Snowdrift problem, although a mere 10-15 cm of fresh snow is the source material for the drifts, thus, not too large.

#### Avalanche problems



#### Danger ratings



#### Expositions



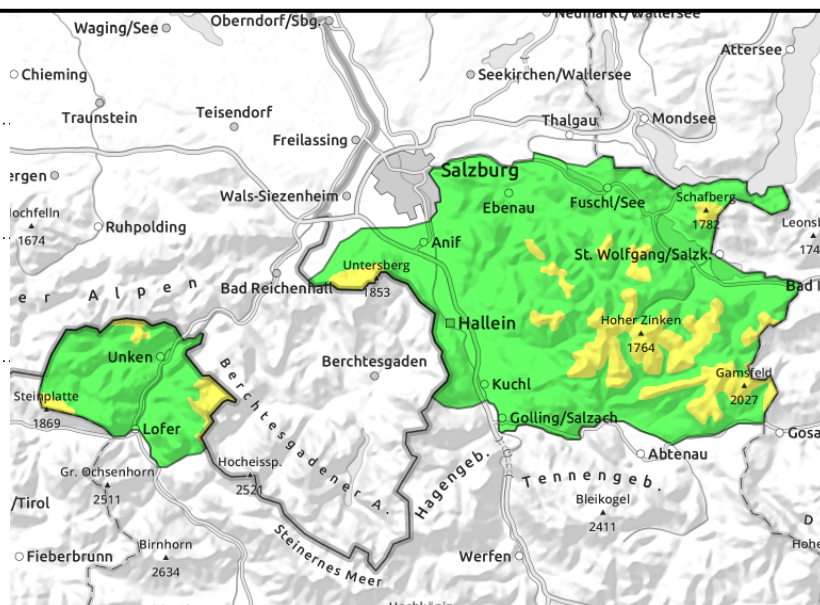
# 10.02.2021, afternoon

**Osterhorngruppe, Gamsfeldgruppe, Untersbergstock, Chiemgauer Alpen, Heutal, Reiteralpe**



very few backcountry danger zones

generating in afternoon, near ridgelines, thin, small



## Fresh, mostly thin snowdrifts generating in afternoon

Avalanche danger in the morning is LOW, rising above 1400 m in the afternoon to MODERATE. In afternoon, caution urged towards fresh snowdrifts, they can be easily triggered (small-sized, relatively thin). The covered old snow could be triggered in isolated spots in extremely steep terrain (over 40° gradient) in NW-NE-E aspects by large additional loading where snow is shallow and in transitions.

### Snowpack structure

In the morning the snowpack is stable. Old powder lies atop a firm, compact old snowpack surface. Potential weak layers in the old snow are well covered, unlikely to trigger. In the afternoon, wind and cold fresh snow will generate fresh drifts in ridgeline terrain, initially small and thin.

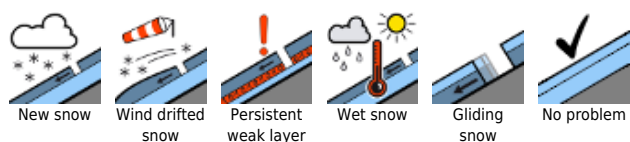
### Weather

On Wednesday the peaks will be free to begin with, although clouds above summit level will be heavy, soon creating diffuse light. As of midday, snowfall will set in. In the afternoon and evening, light to moderate snowfall (fresh snow by evening: 10-15 cm). Winds will initially be southerly, then shift to northerly, be blowing at moderate strength. At 1500 m: -3 degrees at midday, descending in the afternoon. On Wednesday night: temperatures will plummet!

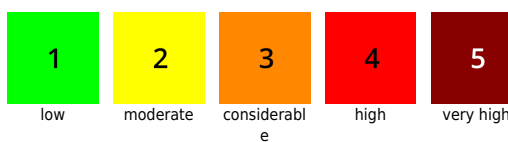
### Outlook

Bitter cold, windy. At 2000 m: -20 degrees, and winds will make it feel like -35°. Snowdrift problem, although a mere 10-15 cm of fresh snow is the source material for the drifts, thus, not too large.

#### Avalanche problems



#### Danger ratings

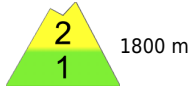
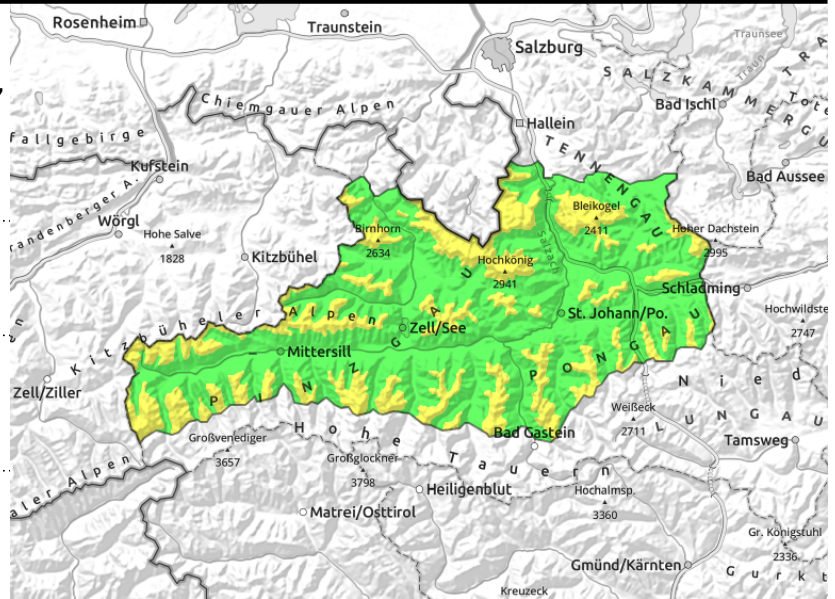



#### Expositions




**10.02.2021**

**Tennengebirge, Gosaukamm, Steinernes Meer, Hochkönig, Hagengebirge, Göllstock, Loferer und Leoganger Steinberge, Kitzbüheler Alpen, Glemmtal, Oberpinzgauer Grasberge, Großvenedigergruppe Nord, Glocknergruppe Nord, Goldberggruppe Nord, Dientner Grasberge, Pongauer Grasberge, Niedere Tauern Nord**



 triggerable in transitions from shallow to deep snow above 2000 m

 near ridgelines, mostly thin, small

## Caution urged in shallow-snow zones and on steep ridgeline slopes

Above 1800 m, slab avalanche danger is MODERATE. Below 1800 m, danger is LOW. Main danger: old-snow problem, even after snowfall sets in during the afternoon. Isolated avalanche prone locations for the old-snow problem occur on NW-NE-E facing slopes. Caution urged on very steep to extremely steep slopes where the snow is shallow or in transitions into wind-loaded zones. Triggering is possible primarily by large additional loading. The slab triggerings can grow to medium size, in isolated cases to large size. Second problem: thin, small drifted masses on N/E facing slopes. Generally near ridgelines. Predominantly small sized.

### Snowpack structure

The latest fresh snow (10-15 cm) is well bonded to the snow base, on south-facing slopes has a slight moist crust. In the old snow are persistent weak layers, especially in N/E aspects at 1800-2200 m. These ugly layers are 95% covered.

### Weather

On Wednesday the peaks will initially be free, the clouds above summit level heavy and soon causing diffuse light. Snowfall will set in during the afternoon, continuing at light to moderate strength until evening. Fresh snow by evening: 5 cm, regionally 10 cm. Winds will initially be southerly, later northerly, blowing at moderate strength. At midday 2000 m: -4 degrees; at 3000 m: -9 degrees. Temperatures will drop in afternoon. On Wednesday night: temperatures will plummet!

### Outlook

**Bitter cold and windy.** At 2000 m: -20 degrees, with the wind seeming like -35°. **Moderate snowdrift problem, concealed old-snow problem where the snow is shallow.**

#### Avalanche problems



#### Danger ratings

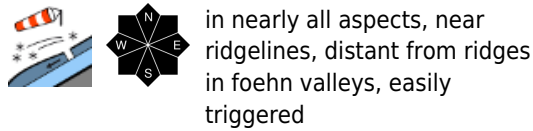


#### Expositions

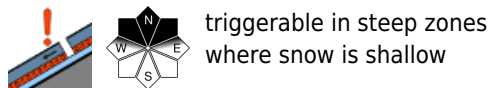


**10.02.2021**

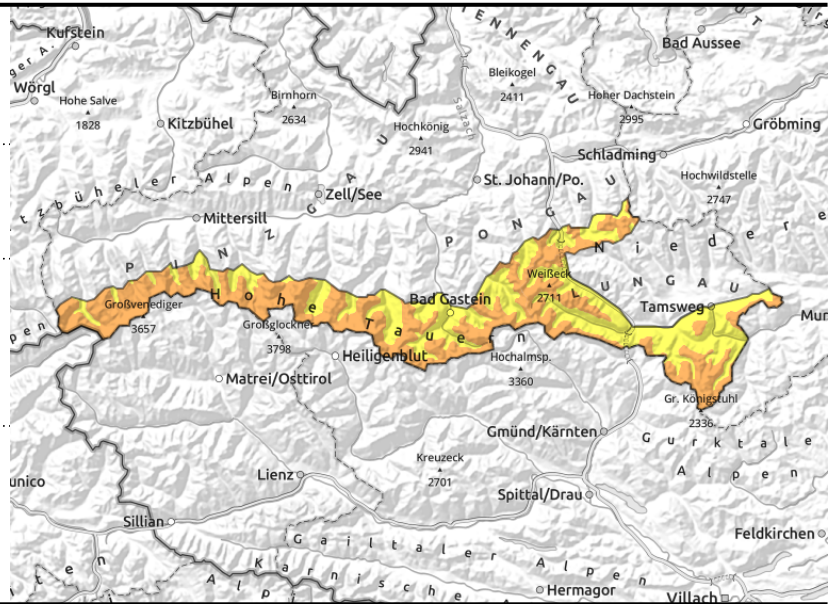
**Großvenedigergruppe Alpenhauptkamm, Glocknergruppe Alpenhauptkamm, Goldberggruppe Alpenhauptkamm, Ankogelgruppe, Muhr, Niedere Tauern Alpenhauptkamm, Nockberge**



in nearly all aspects, near ridgelines, distant from ridges in foehn valleys, easily triggered



triggerable in steep zones where snow is shallow



## Wide-ranging snowdrift accumulations due to fresh snow and shifting winds

Above 2000 m danger of slab avalanches is **CONSIDERABLE**. Main problem: fresh snowdrift accumulations.

The freshly generated snowdrifts on steep to very steep slopes and in gullies can be triggered even by the weight of one singular skier. Avalanche prone locations are frequent near ridgelines, but also evident distant from ridgelines in classic foehn-exposed valleys and lanes, behind protruberances. Avalanches can grow to medium-to-large size.

Second (and secondary) problem: old snow. Triggered avalanches can possible fracture down to deeper layers inside the snowpack and then grow to large size. Steep to extremely steeper slopes are most treacherous when the snow is shallow or in transitions to wind-loaded zones.

In heavily wind-drifted zones, isolated naturally triggered loose-snow and slab avalanches can release.

### Snowpack structure

Fresh snow and strong southerly winds, later shifting to northerly, will generate wide-ranging snowdrift accumulations in all aspects. The fresh drifts are prone to triggering. On the one hand, there is cold powder on north-facing slopes; on the other, snowdrifts and patches of drift lie top a thin melt-freeze crust: triggerable!

### Weather

On Wednesday, fog and moderate snowfall will dominate until evening, generally bringing 20 cm, regionally up to 30 cm. Winds will be strong-to-stormy from the south in foehn-exposed lanes, in the afternoon shifting to northerly. At midday at 2000 m: -4 degrees; at 3000 m: -9 degrees. In the afternoon, temperatures will drop. On Wednesday night: temperatures will plummet!

### Outlook

**Bitter cold and windy.** At 2000 m, -20 degrees, due to wind feeling like -35°. On Wednesday, **considerable danger (3) due to fresh, cold snowdrifts.**

#### Avalanche problems



#### Danger ratings

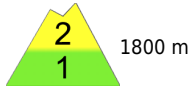




#### Expositions

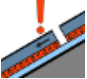



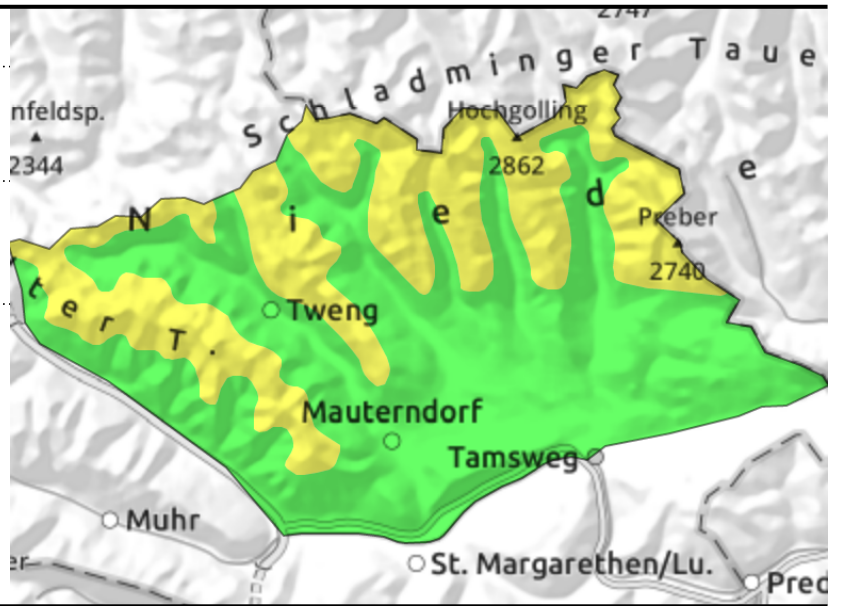
**10.02.2021**

**Niedere Tauern Süd**



  near ridgelines, often easily triggered, above treeline

  triggerable in shallow-snow zones



**Beware snowdrifts above the treeline. Wind direction is shifting.**

Above 2000 m danger of slab avalanches is CONSIDERABLE. Main problem: fresh snowdrift accumulations combined with concealed old-snow problem.

The freshly generated snowdrifts on steep to very steep slopes and in gullies can be triggered even by the weight of one singular skier. Avalanche prone locations are frequent near ridgelines. Avalanches can grow to medium-to-large size.

Second (and secondary) problem: old snow. Triggered avalanches can possible fracture down to deeper layers inside the snowpack and then grow to large size. Steep to extremely steeper slopes are most treacherous when the snow is shallow or in transitions to wind-loaded zones.

**Snowpack structure**

The latest fresh snow (10-15 cm) and the snow on Wednesday will be increasingly transported above the treeline, fresh snowdrift accumulations will be generated which will grow in size during the afternoon. In the old snow are persistent weak layers which are 95% covered.

**Weather**

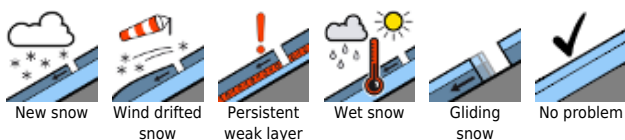
On Wednesday, fog and moderate snowfall will dominate until evening, generally bringing 10 cm, regionally up to 15 cm. Winds will be strong-to-stormy from the south, in the afternoon shifting to northerly. At midday at 2000 m: -4 degrees; at 3000 m: -9 degrees. In the afternoon, temperatures will drop. On Wednesday night: temperatures will plummet!

**Outlook**

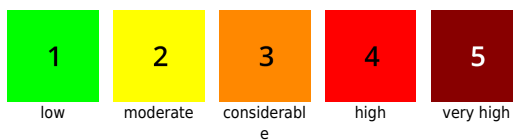
Bitter cold and windy. At 2000 m: -20 degrees, due to wind feeling like -35°. Snowdrift situation above the timberline.

Translated by Jeffrey McCabe, [www.creativtrans.com](http://www.creativtrans.com)

**Avalanche problems**



**Danger ratings**



**Expositions**

