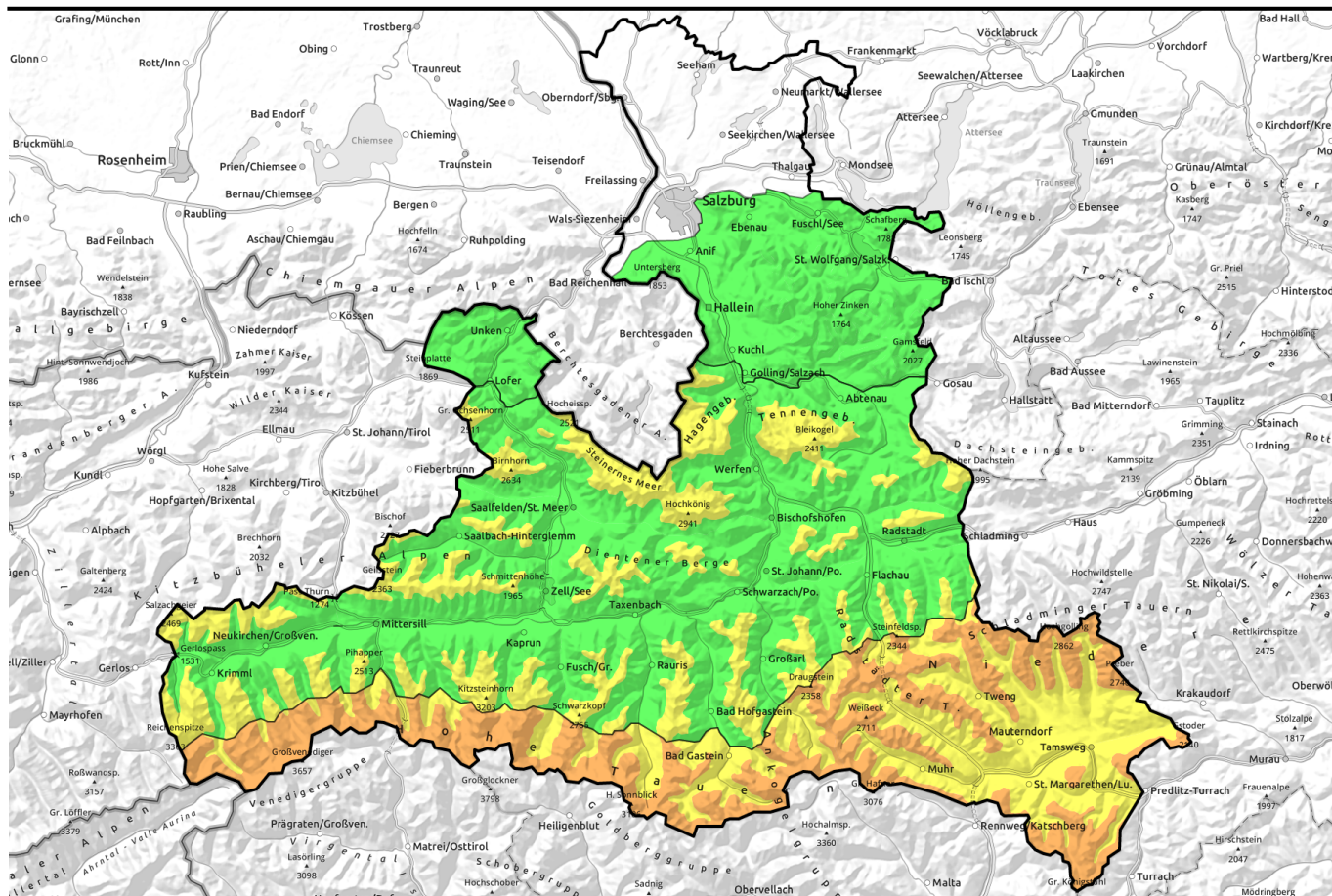


09.02.2021



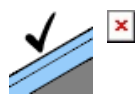
Old-snow problem above 2000 m. Fresh foehn-induced drifts in the south.

	<p>1</p>	<p>Osterhorngruppe, Gamsfeldgruppe, Untersbergstock, Chiemgauer Alpen, Heutal, Reiteralpe</p>				
	<p>2 1 1800 m</p>	<p>Tennengebirge, Gosaukamm, Steinernes Meer, Hochkönig, Hagengebirge, Göllstock, Loferer und Leoganger Steinberge, Kitzbüheler Alpen, Glemmtal, Oberpinzgauer Grasberge, Großvenedigergruppe Nord, Glocknergruppe Nord, Dientner Grasberge, Pongauer Grasberge, Niedere Tauern Nord, Goldberggruppe Nord</p>				
	<p>3 2 2000 m</p>	<p>Großvenedigergruppe Alpenhauptkamm, Glocknergruppe Alpenhauptkamm, Goldberggruppe Alpenhauptkamm, Niedere Tauern Alpenhauptkamm, Ankogelgruppe, Muhr, Niedere Tauern Süd, Nockberge</p>				

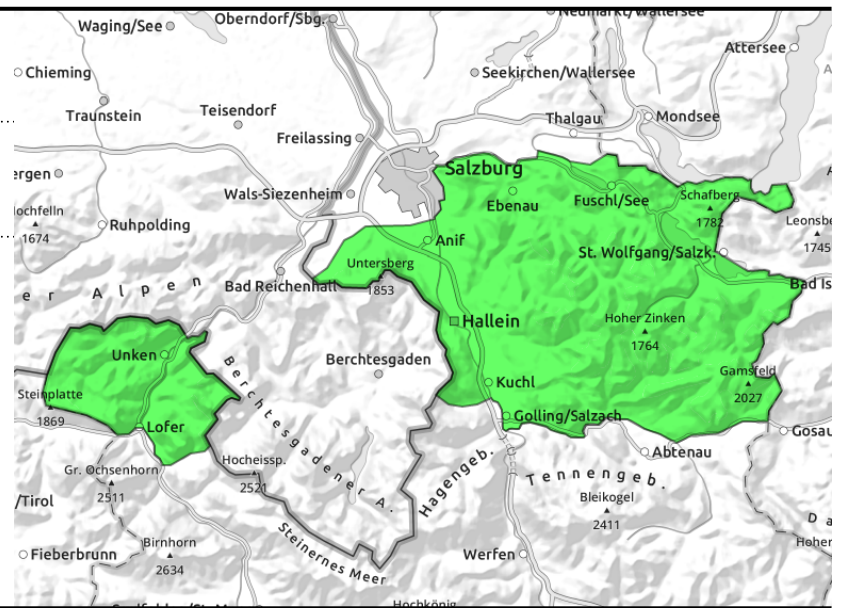
Avalanche problems	Danger ratings	Expositions
New snow Wind drifted snow Persistent weak layer Wet snow Gliding snow No problem	1 low 2 moderate 3 considerable 4 high 5 very high	

09.02.2021

**Osterhorngruppe, Gamsfeldgruppe,
Untersbergstock, Chiemgauer Alpen, Heutal,
Reiteralpe**



very few danger zones



Relatively stable snowpack

Avalanche danger is LOW, but not non-existent. On some spots in steep terrain (über 40° gradients) in NW-NE-E aspects, a slab avalanche can be triggered by large additional loading. Likelihood is low. Mostly applies to shallow-snow zones and transitions. Naturally triggered avalanches are highly unlikely.

Snowpack structure

Dry powder snow (5-10 cm) was deposited on a firm, compact old snowpack surface. Potential weak layers inside the old snow (esp. the loose fundament) are well covered, thus, unlikely to trigger.

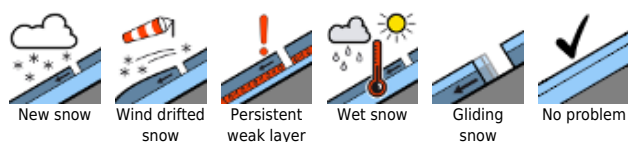
Weather

In early and late morning, cloudy skies. The higher peaks could be veiled in clouds. Light minor snowfall is possible around midday. In the afternoon, skies will brighten, a bit of sunshine is possible. Westerly winds at 20 km/hr. At 1500 m: -5 degrees.

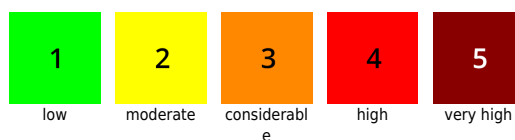
Outlook

No significant change on Wednesday. On Wednesday night: 10 to 15 cm of fresh snow anticipated, with wind and dropping temperatures.

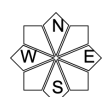
Avalanche problems



Danger ratings

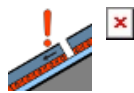
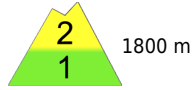
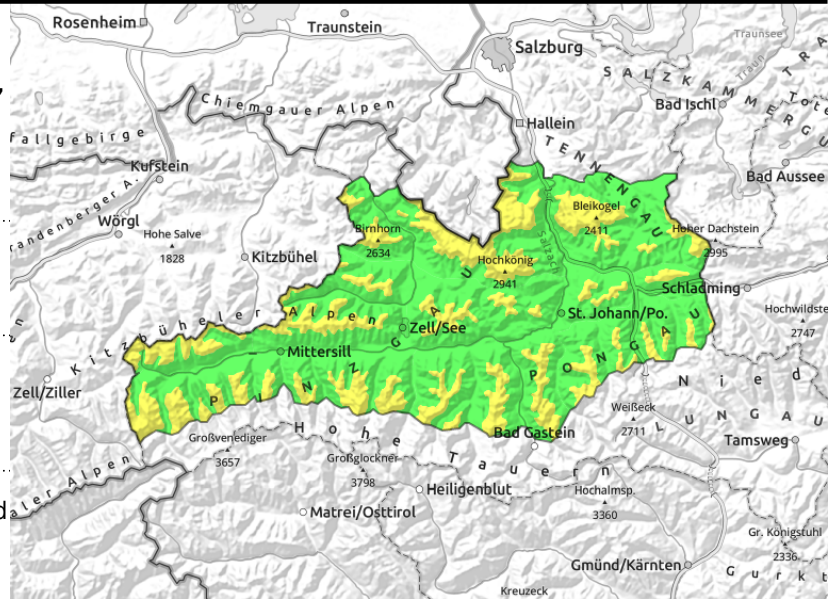


Expositions



09.02.2021

Tennengebirge, Gosaukamm, Steinernes Meer, Hochkönig, Hagengebirge, Göllstock, Loferer und Leoganger Steinberge, Kitzbüheler Alpen, Glemmtal, Oberpinzgauer Grasberge, Großvenedigergruppe Nord, Glocknergruppe Nord, Dientner Grasberge, Pongauer Grasberge, Niedere Tauern Nord, Goldberggruppe Nord



triggerable in transitions from shallow to deep snow above 2000 m



near ridgelines, mostly thin and small-spread

Caution in shallow-snow zones + steep slopes near ridgelines

Above 1800 m the danger of slab avalanches is MODERATE. Below 1800 m danger is LOW. Main problem: old-snow. Isolated avalanche prone locations occur in NW-NE-E aspects. Caution is urged on very steep to extremely steep slopes where the snow is shallow are in transitions to wind-loaded zones. Triggering is possible primarily by large additional loading. The slabs can be medium, in isolated cases also large size.

Second (secondary) problem: thin, small snowdrift patches on north and east-facing slopes, near ridgelines, easy to recognize and easily triggered in many places. Generally small-sized.

Snowpack structure

Fresh snow (10-20 cm) from Sunday/Monday above the timberline, was hardly transported and has adequate bonding to the snow base up to 2000 m. Above 2000 m, small snowdrift accumulations and patches on thin melt-freeze crusts can be triggered.

Inside the old snow are persistent weak layers (at ground level and in the upper third of the snowpack, mostly on north and east-facing slopes at 1800-2200 m). These ugly layers are mostly covered (95%).

The recently moist snowpack has regained firmness due to the lower temperatures.

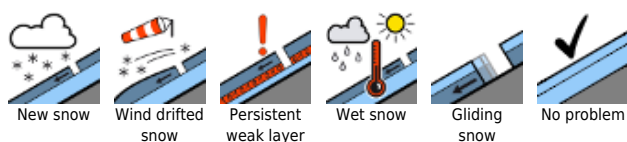
Weather

In early and late morning, cloudy skies. The higher peaks could be veiled in clouds. Light minor snowfall is possible around midday. In the afternoon, skies will brighten, a bit of sunshine is possible. Westerly winds at 30 km/hr. At 2000 m: -6 degrees; at 2000 m: -10 degrees.

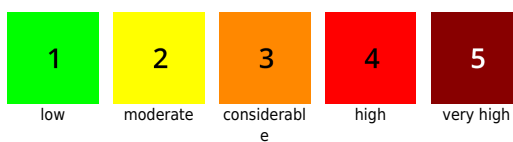
Outlook

No significant change. On Wednesday night: 10-15 cm of fresh snow, amid wind and lower temperatures.

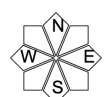
Avalanche problems



Danger ratings

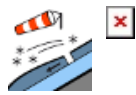
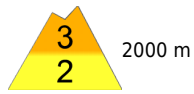


Expositions

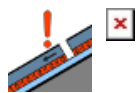


09.02.2021

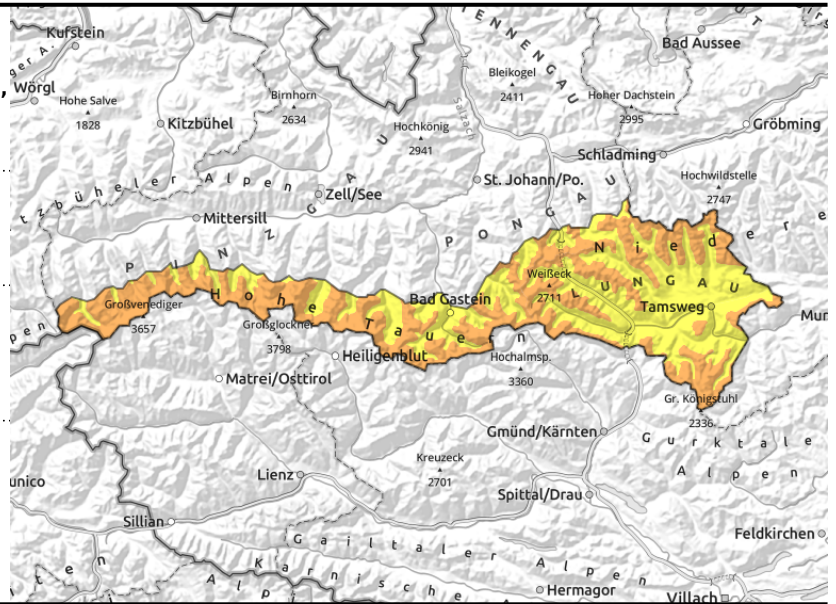
Großvenedigergruppe Alpenhauptkamm, Glocknergruppe Alpenhauptkamm, Goldberggruppe Alpenhauptkamm, Niedere Tauern Alpenhauptkamm, Ankogelgruppe, Muhr, Niedere Tauern Süd, Nockberge



near ridgelines, also distant from ridges in foehn-exposed valleys, easily triggered



triggerable in steep shallow-snow zones



Fresh snowdrift accumulations due to nocturnal foehn

Above 2000 m, danger of slab avalanches is CONSIDERABLE. Main problem: fresh snowdrifts. Easily recognized snowdrift accumulations on steep to extremely steep north-facing slopes, in gullies, can be triggered even by the weight of one single skier. Avalanche prone locations are found especially near ridgelines, also distant from ridgelines in the classic foehn-exposed valleys and mountain lanes. Avalanches can grow to medium-to-large size. On sunny and rocky steep slopes, loose-snow avalanches are possible. Isolated medium-sized glide-snow avalanches are also conceivable.

Snowpack structure

Fresh snow (20-40 cm) fell on Sunday night. On Monday night, foehn wind will transport the dry fresh snow. It is prone to triggering. On the one hand, there is cold powder on north-facing slopes, on the other, the snowdrift masses and patches can be triggered atop thin melt-freeze crusts. Inside the old snow are persistent weak layers (at ground level and in the upper third of the snowpack, mostly on north and east-facing slopes at 1800-2200 m). These ugly layers are mostly covered (95%).

Weather

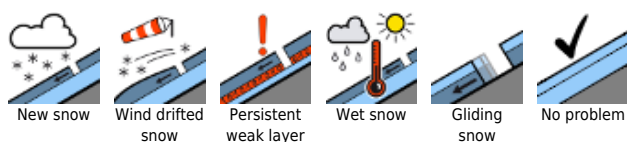
Following a windy night (foehn), skies will be overcast during the daytime. Higher peaks can be veiled in clouds. Occasional minor snowfall is possible. Strong-velocity southerly winds will swiftly slacken off in the morning, later on be blowing at 20-30 km/hr. At 2000 m: -6 degrees; at 3000 m, -10 degrees.

Outlook

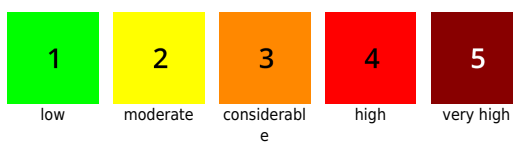
On Wednesday, renewed southerly foehn wind. The snowdrift situation will remain intact. Considerable danger (3) above the treeline.

Translated by Jeffrey McCabe, www.creativtrans.com

Avalanche problems



Danger ratings



Expositions

