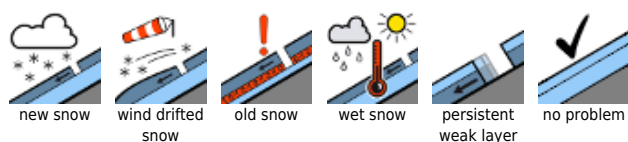


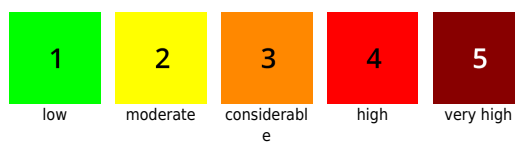
Caution: snowdrift threat. Avoid steep zones.

		<p>Osterhorngruppe, Gamsfeldgruppe, Untersbergstock, Chiemgauer Alpen, Heutal, Reitalpe, Dientner Grasberge, Pongauer Grasberge, Niedere Tauern Nord</p>	
	<p>1800 m</p>	<p>Tennengebirge, Gosaukamm, Steinernes Meer, Hochkönig, Hagengebirge, Göllstock, Loferer und Leoganger Steinberge, Kitzbüheler Alpen, Glemmtal, Oberpinzgauer Grasberge, Großvenedigergruppe Nord, Großvenedigergruppe Alpenhauptkamm, Glocknergruppe Nord, Glocknergruppe Alpenhauptkamm, Goldberggruppe Nord, Goldberggruppe Alpenhauptkamm, Niedere Tauern Alpenhauptkamm</p>	
	<p>1800 m</p>	<p>Niedere Tauern Süd, Nockberge, Ankogelgruppe, Muhr</p>	

Avalanche problems



Danger ratings



Expositions



02.02.2021

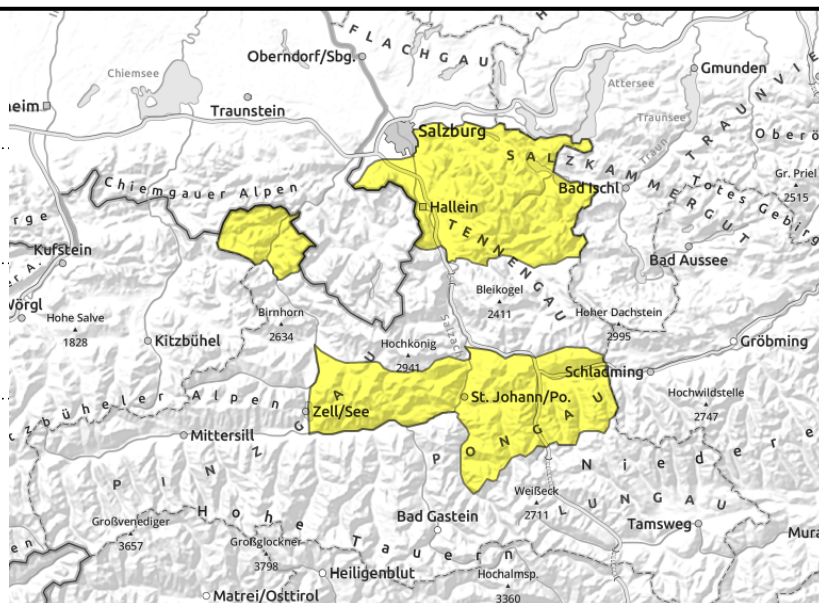
Osterhorngruppe, Gamsfeldgruppe, Untersbergstock, Chiemgauer Alpen, Heutal, Reiteralpe, Dientner Grasberge, Pongauer Grasberge, Niedere Tauern Nord



near to and distant from ridgelines. triggering primarily by large additional loading



on very steep grass-covered slopes



Moderate snowdrift problem and glide-snow problem

Above the timberline, isolated NW-NE-E facing slopes can trigger a dry-snow slab avalanche in very steep terrain by large additional loading. Snowdrift accumulations prevail both near to and distant from ridgelines in wooded zones. Slab releases can grow to medium size. Below the treeline, small slides of wet-snow and isolated naturally triggered glide-snow avalanches are possible in extremely steep grassy terrain.

Snowpack structure

Light rain, warmth and sunshine are making the uppermost snowpack layer soft and moist. Beneath the most recent snowdrifts are weak layers which can still be triggered in some places. The snowpack is relatively isotherm in nearly all aspects, varyingly moist deeper down. Near to ground level there is unbonded granular snow from the beginning of January, generally moist.

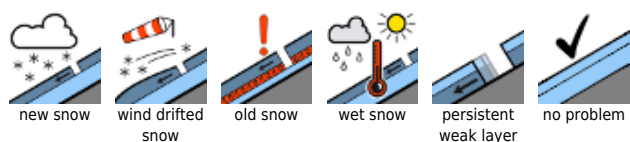
Weather

On Tuesday, northern regions could get minor rainfall. Thereafter clouds will disperse and a few hours of sunshine are anticipated. In the afternoon, cloud cover will move in again. Light winds. At 1500 m, +4 degrees, rising in the afternoon; at 2000 m, -4 to +1 degree.

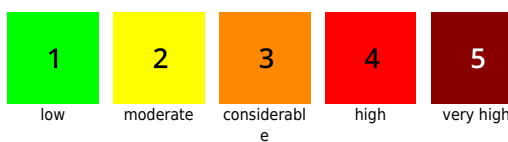
Outlook

The next few days will be rather mild, with light rainfall during the next two nights. The snowdrift problem will recede. The snowpack surface will become moist.

Avalanche problems



Danger ratings

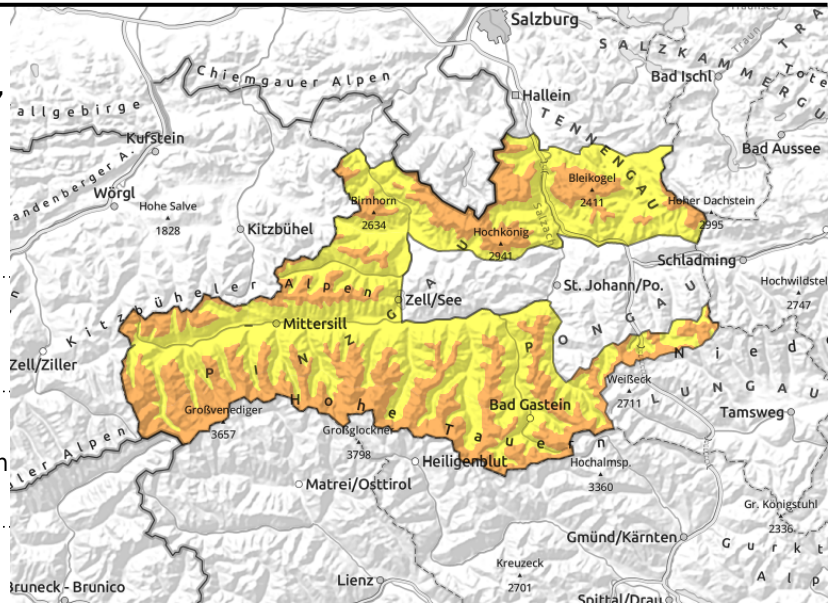


Expositions



02.02.2021

Tennengebirge, Gosaukamm, Steinernes Meer, Hochkönig, Hagengebirge, Göllstock, Loferer und Leoganger Steinberge, Kitzbüheler Alpen, Glemmtal, Oberpinzgauer Grasberge, Großvenedigergruppe Nord, Großvenedigergruppe Alpenhauptkamm, Glocknergruppe Nord, Glocknergruppe Alpenhauptkamm, Goldberggruppe Nord, Goldberggruppe Alpenhauptkamm, Niedere Tauern Alpenhauptkamm



1800 m



near to and distant from ridgelines, above 1800 m, often by minimum additional loading



triggerable in transitions from shallow to deep snow, by large additional loading

Ongoing snowdrift problem above 1800 m

Above 1800 m on very steep slopes a dry-snow slab avalanche can be triggered, primarily in NW-NE-E aspects. Slab releases can grow to medium-to-large size. Most treacherous: the recently formed snowdrift accumulations which occur both near to and distant from ridgelines and are easy to recognize. Caution urged (or better yet, circumvent) all shallow-snow zones on steep slopes and transitions from shallow to deep snow. In those places the snowpack should be left in peace.

Snowpack structure

The most recent snowfall is moist below 1800 m and higher up. Wind-exposed terrain is hard or windblown. Superficial layers, i.e. the uppermost 30 cm, evidence weak layers (hoar, some cold-on-warm effect) which in places are still instable. The deeper-down layers have an old-snow problem from the beginning of January (unbonded granular crystals in the lowermost third of the snowpack) and can still be triggered with heavy additional loading.

Weather

On Tuesday, minor showers will move through the northern regions (snowfall level 1400 m). Further towards the Tauern it will remain dry. Sunshine in the morning and past midday, accompanied by a few clouds. In the afternoon, clouds will increase. Light winds, at high altitudes 30 km/hr. At 2000 m; -4 to +1 degree; at 3000 m, -10 to -5 degrees:

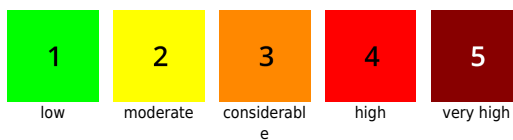
Outlook

The next few days will become milder still. The snowdrift problem will recede. Superficial layers on sunny slopes and in general at low altitudes, the snow will become moist.

Avalanche problems



Danger ratings



Expositions



