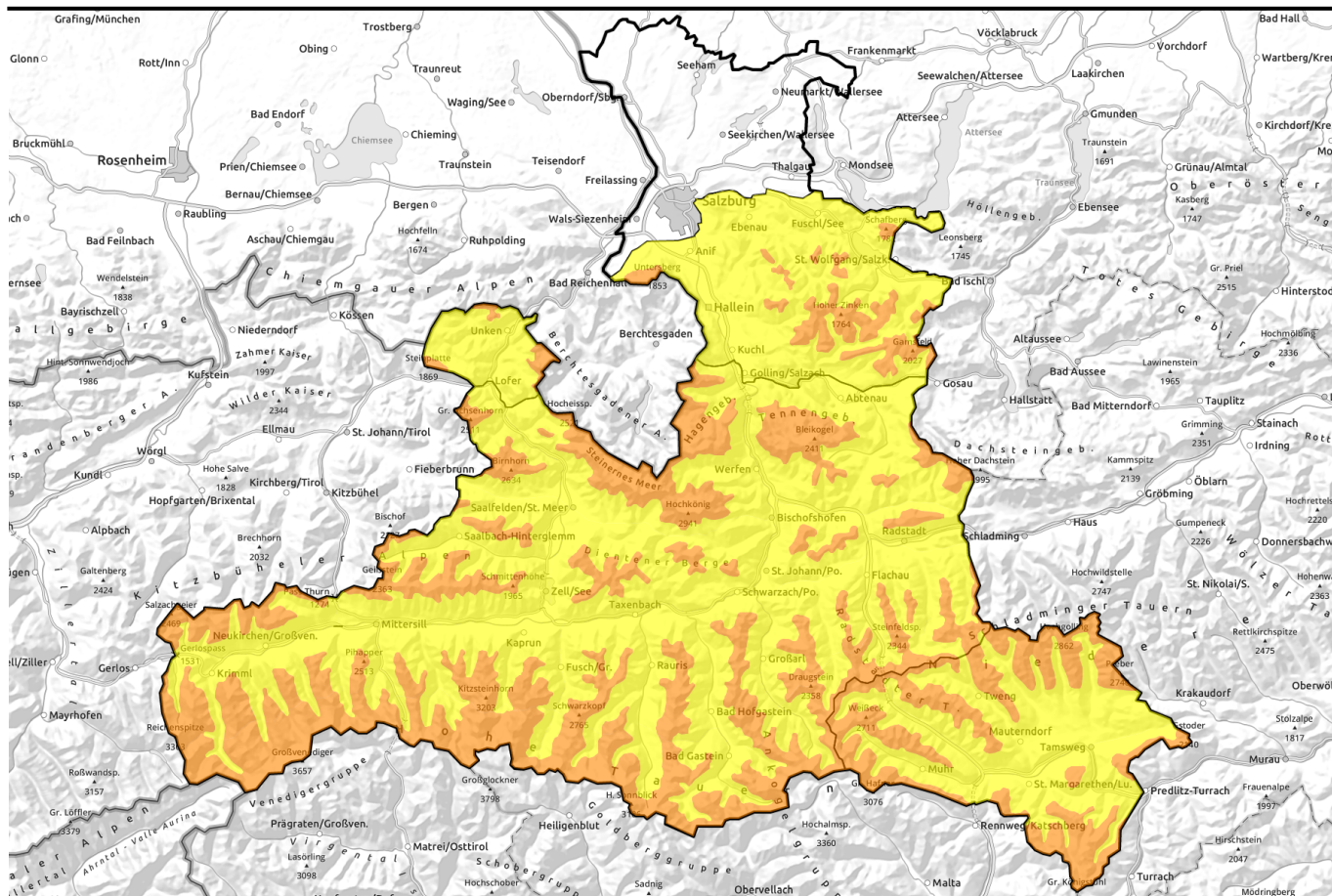


31.01.2021



More fresh snow. Heavy wind impact.



1600 m

Osterhorngruppe, Gamsfeldgruppe, Untersbergstock, Chiemgauer Alpen, Heutal, Reiteralpe



1700 m

Loferer und Leoganger Steinberge, Steinernes Meer, Hochkönig, Hagengebirge, Göllstock, Tennengebirge, Gosaukamm, Pongauer Grasberge, Dientner Grasberge, Oberpinzgauer Grasberge, Glocknergruppe Nord, Kitzbüheler Alpen, Glemmtal, Großvenedigergruppe Nord, Glocknergruppe Alpenhauptkamm, Großvenedigergruppe Alpenhauptkamm, Goldberggruppe Alpenhauptkamm, Niedere Tauern Nord, Goldberggruppe Nord, Niedere Tauern Alpenhauptkamm



1700 m

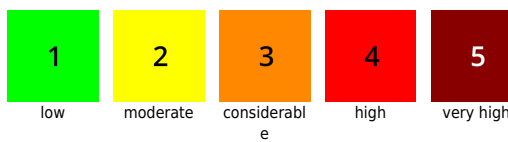
Ankogelgruppe, Muhr, Niedere Tauern Süd, Nockberge



Avalanche problems



Danger ratings



Expositions

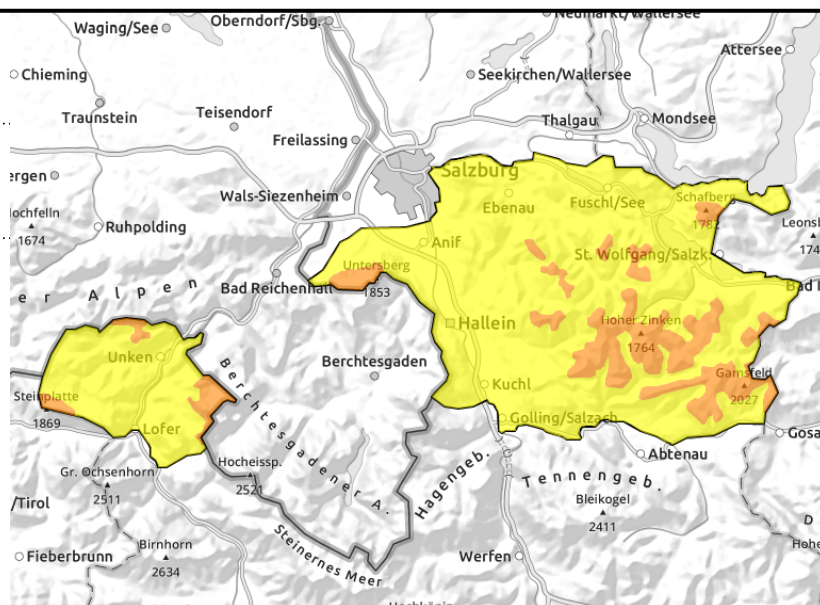


31.01.2021

Osterhorngruppe, Gamsfeldgruppe, Untersbergstock, Chiemgauer Alpen, Heutal, Reiteralpe



near to and distant from ridgelines, behind protruberances, in gullies, steep bowls



Snowdrifts deposited on unfavourable base

Avalanche danger above 1600 m is CONSIDERABLE, below that altitude MODERATE. Particularly in N-E-S aspects and in gullies, triggering a slab avalanche is possible even by the weight of one single skier. Avalanche prone locations occur both near to and distant from ridgelines, behind protruberances. Frequency of danger zones increases with ascending altitude.

Snowpack structure

Fluctuating temperatures have accompanied the snowfall of recent days. Stormy westerly winds transported the snow widespread, deposited drifts in gullies and behind protruberances also distant from ridgelines. Rainfall recently extended up to 1700 m. Both inside the fresh drifts and at the borders to the cold old snowpack layers, fractures are possible. The most recent fresh snow fell quietly, now covers many signs of wind.

Weather

Visibility is limited by clouds and snowfall. In the morning, light to moderate snowfall. As of midday the snowfall will slacken off, but sunshine will remain in the background. At 1500 m, -2 degrees; at 2000 m, -4 degrees. Winds will no longer disturb.

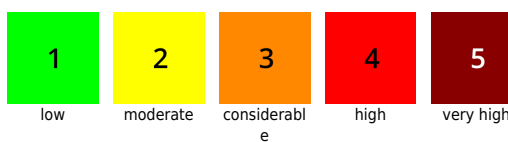
Outlook

On Monday the fresh snow will settle. But due to the unfavourable snowbase, no relaxation in the snowdrift threat is expected.

Avalanche problems



Danger ratings

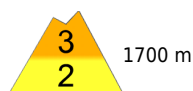
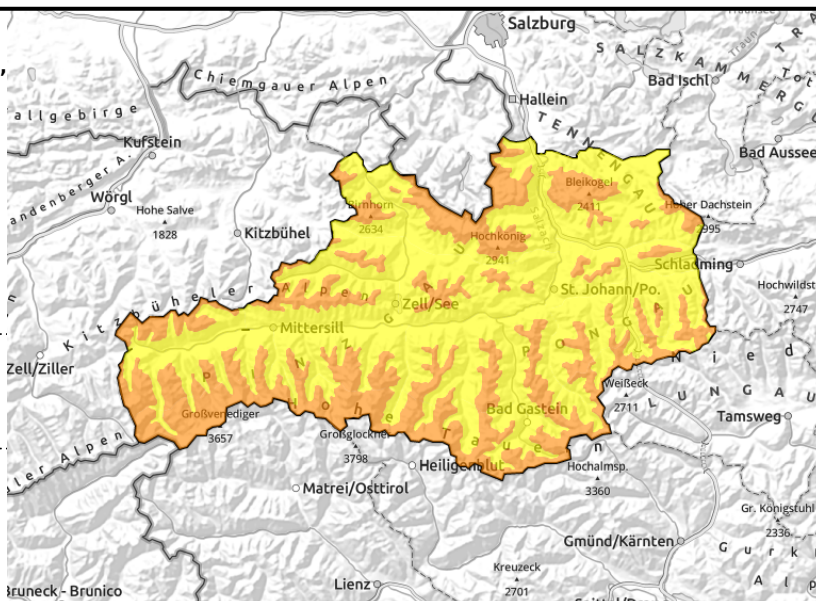


Expositions



31.01.2021

Loferer und Leoganger Steinberge, Steinernes Meer, Hochkönig, Hagengebirge, Göllstock, Tennengebirge, Gosaukamm, Pongauer Grasberge, Dientner Grasberge, Oberpinzgauer Grasberge, Glocknergruppe Nord, Kitzbüheler Alpen, Glemmtal, Großvenedigergruppe Nord, Glocknergruppe Alpenhauptkamm, Großvenedigergruppe Alpenhauptkamm, Goldberggruppe Alpenhauptkamm, Niedere Tauern Nord, Goldberggruppe Nord, Niedere Tauern Alpenhauptkamm



near to and distant from ridgelines, behind protruberances, in gullies, steep bowls above 1800 m



triggerable in transitions from shallow to deep snow

Trigger-sensitive snowdrift accumulations

Danger of avalanches above 1800 m is CONSIDERABLE, below that altitude MODERATE. Avalanche prone locations occur both near to and distant from ridgelines, behind protruberances particularly in NW-E-S aspects, and in gullies in all aspects. Triggering an avalanche there is possible even by the weight of one single skier. Frequency of danger zones increases with ascending altitude. Avalanche prone locations are difficult to recognize. In outlying terrain, experience in assessing avalanche risks on-site is absolutely necessary.

Snowpack structure

Fluctuating temperatures have accompanied the heavy snowfall over the last few days. For a short time on Thursday, there was rain up to 1500-2000 m. Stormy W/NW winds transported the snow intensively. Bonding of the compact of fresh snow and drifts to the cold, sometimes melt-freeze encrusted base is often unfavourable, in some places the surface hoar has been blanketed. The latest bout of fresh snow fell more quietly, now covers many signs of wind. Several slab avalanches involving persons on Saturday bear witness to the unfavourable snowpack layering.

Weather

Visibility is limited by clouds and snowfall. In the morning, light to moderate snowfall. As of midday the snowfall will slacken off, but sunshine will remain in the background. At 2000 m, -4 degrees; at 3000 m, -9 degrees. Northwest winds blowing at 30-50 km/hr in high altitude Tauern terrain, otherwise the wind will be no disturbance.

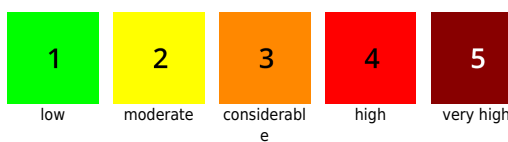
Outlook

On Monday the fresh snow will settle. But due to the unfavourable snowbase, no relaxation in the snowdrift threat is expected.

Avalanche problems



Danger ratings



Expositions



31.01.2021

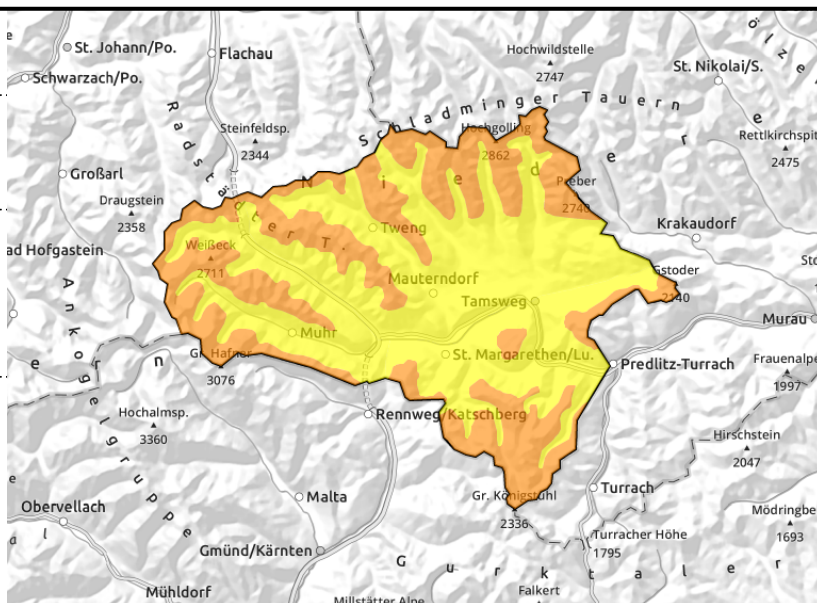
Ankogelgruppe, Muhr, Niedere Tauern Süd, Nockberge



near to and distant from ridgelines, behind protruberances, atop unfavourable base



triggerable in transitions from shallow to deep snow



Blanketed snowdrifts on an unfavourable base

Danger of avalanches above 1800 m is CONSIDERABLE. Slab avalanches can trigger particularly in E-S aspects and in gullies and bowls in all aspects even by the weight of one single skier. Avalanche prone locations occur both near to and distant from ridgelines, behind protruberances. Poor visibility makes it more difficult to assess the risks on-site. In outlying terrain, experience of avalanche evaluation is imperative.

Snowpack structure

Stormy W/NW winds have generated wide-ranging snowdrift accumulations. Gullies and bowls are filled to the brim, windward terrain is utterly windblown and bare of snow. A few centimetres of fresh snow lie on top, and wind impact often covers the signs. Bonding of compact snowdrifts to the cold layers beneath them is unfavourable; the borderlines can produce and propagate fractures, as avalanches involving persons on Saturday proved.

Weather

Visibility is limited by clouds and snowfall. In the morning, light to moderate snowfall. As of midday the snowfall will slacken off, but sunshine will remain in the background. At 2000 m, -4 degrees; at 3000 m, -9 degrees. The wind will be no disturbance.

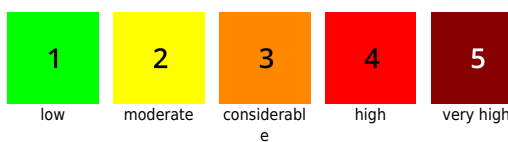
Outlook

On Monday the fresh snow will settle. But due to the unfavourable snowbase, no relaxation in the snowdrift threat is expected.

Avalanche problems



Danger ratings



Expositions

