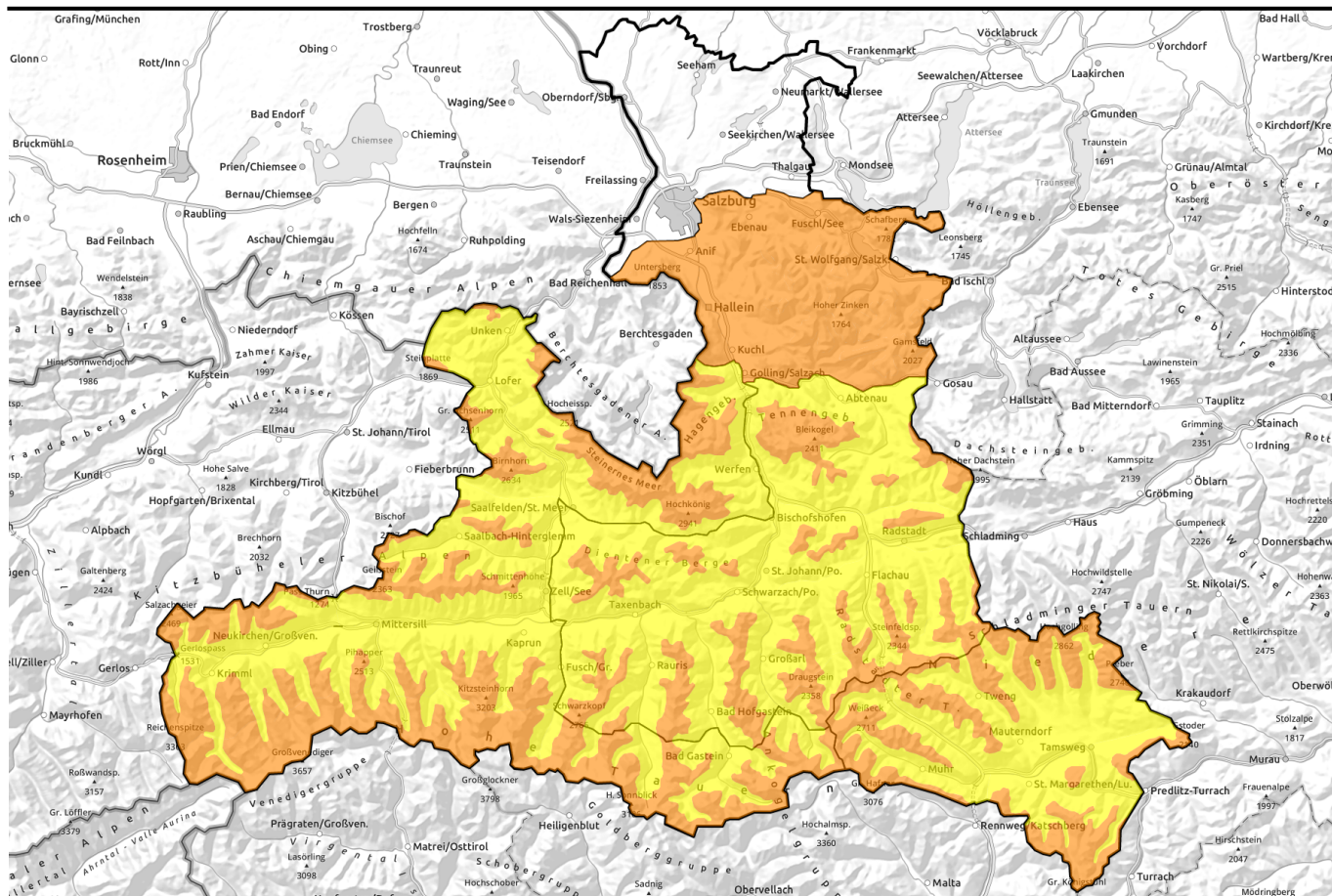


28.01.2021, morning



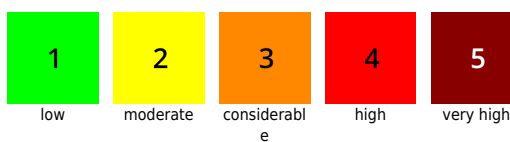
Bad day for backcountry activities. At low altitudes, the snow is flowing away.

		Osterhorngruppe, Gamsfeldgruppe, Untersbergstock	
	timberline	Niedere Tauern Süd, Ankogelgruppe, Muhr, Nockberge	
	forestline	Steinernes Meer, Hochkönig, Hagengebirge, Göllstock, Chiemgauer Alpen, Heutal, Reiteralpe, Loferer und Leoganger Steinberge, Kitzbüheler Alpen, Glemmtal, Oberpinzgauer Grasberge, Großvenedigergruppe Nord, Glocknergruppe Nord, Glocknergruppe Alpenhauptkamm, Großvenedigergruppe Alpenhauptkamm, Goldberggruppe Alpenhauptkamm	
	forestline	Tennengebirge, Gosaukamm, Pongauer Grasberge, Dientner Grasberge, Goldberggruppe Nord, Niedere Tauern Nord, Niedere Tauern Alpenhauptkamm	

Avalanche problems



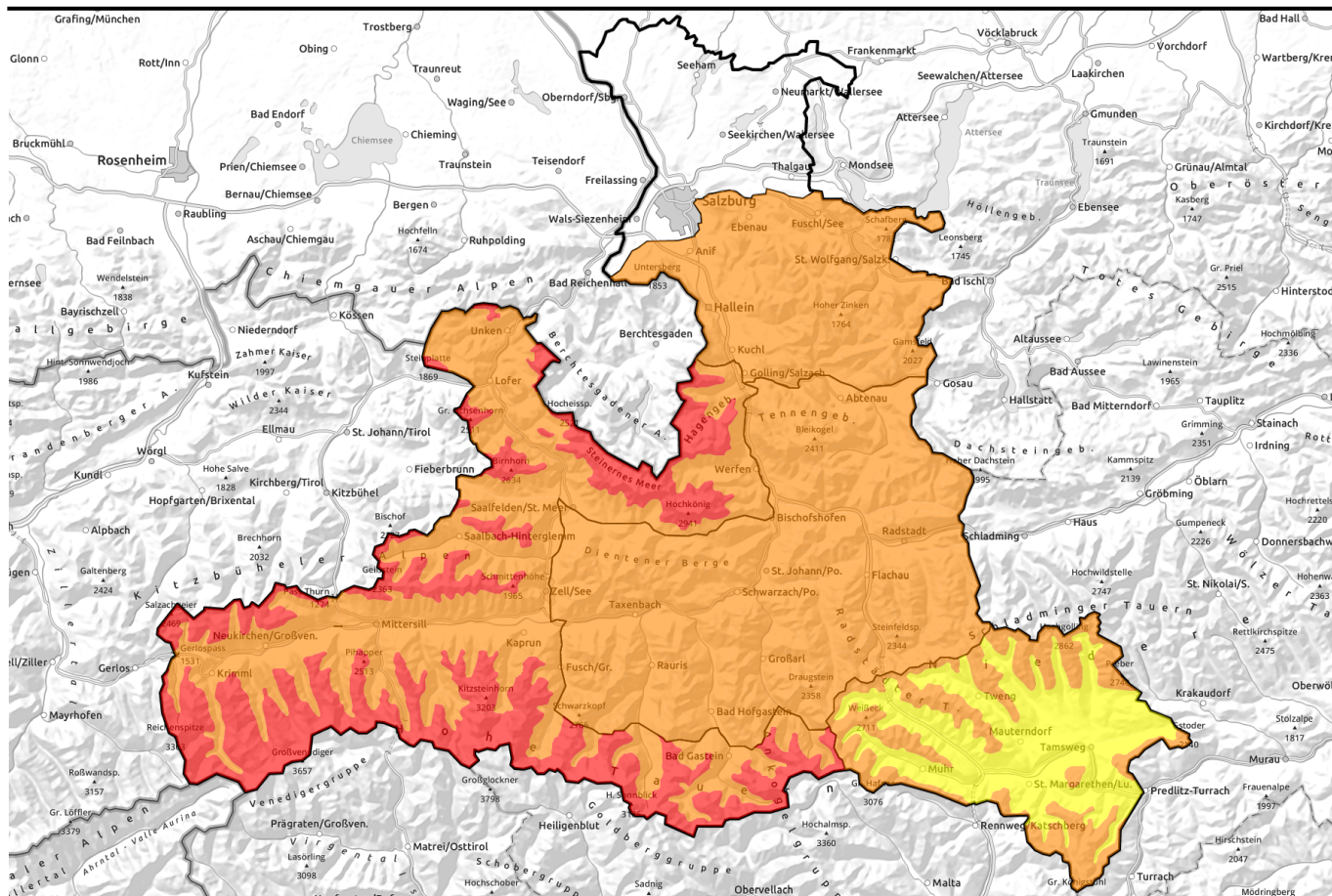
Danger ratings



Expositions



28.01.2021, afternoon



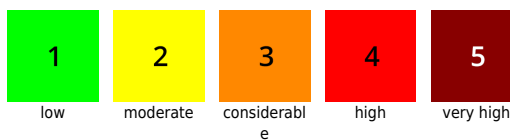
Ungünstiger Tag für Unternehmungen, in tiefen Lagen rinnt der Schnee davon

	Osterhorngruppe, Gamsfeldgruppe, Untersbergstock		
	timberline Niedere Tauern Süd, Ankogelgruppe, Muhr, Nockberge		
	forestline Steinernes Meer, Hochkönig, Hagengebirge, Göllstock, Chiemgauer Alpen, Heutal, Reiteralpe, Loferer und Leoganger Steinberge, Kitzbüheler Alpen, Glemmtal, Oberpinzgauer Grasberge, Großvenedigergruppe Nord, Glocknergruppe Nord, Glocknergruppe Alpenhauptkamm, Großvenedigergruppe Alpenhauptkamm, Goldberggruppe Alpenhauptkamm		
	Tennengebirge, Gosaukamm, Pongauer Grasberge, Dientner Grasberge, Goldberggruppe Nord, Niedere Tauern Nord, Niedere Tauern		

Avalanche problems



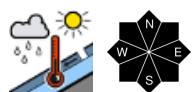
Danger ratings



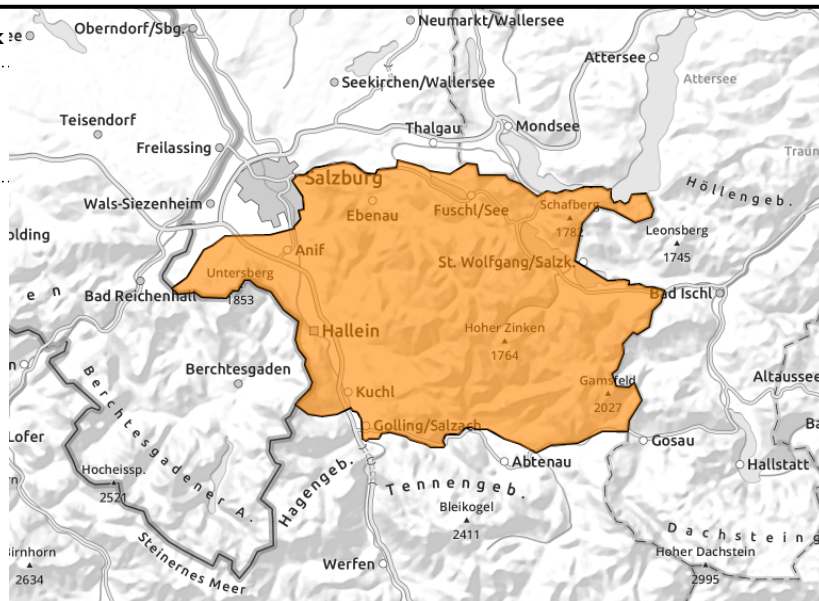
Expositions



Osterhorngruppe, Gamsfeldgruppe, Untersbergstock



with rainfall setting in, swiftly rising snowfall level



Naturally triggered avalanche activity in the afternoon due to heavy rain

Starting at midday, rainfall will intensify, the snowfall level rapidly ascend. Upshot: the snowpack will settle. Naturally triggered wet-snow avalanches can be expected on steep hillsides and in gullies. At intermediate altitudes, snowdrifts can be triggered by winter sports enthusiasts, particularly on very steep N-E facing slopes, especially near ridgelines, but also under the weight on one single skier.

Snowpack structure

On Wednesday the snowpack was able to settle somewhat. The heavy fresh snow from the beginning of the week now covers an old-snow problem (faceted crystals beneath melt-freeze crusts) which is not likely to be triggered by skiers but could be activated by rainfall, particularly where the snowpack is shallow.

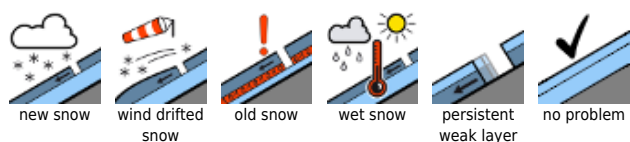
Weather

Visibility will deteriorate significantly as of midday. A bit of snowfall in the morning, followed by intensive rainfall and snowfall. The snowfall level will ascend from 700 m (in early morning) to 1700 m in the evening. In the afternoon, strong to stormy westerly winds will intensify. Temperatures at 1500 m will rise during the daytime from -3 to +1 degree.

Outlook

On Friday, lower temperatures, the wet-snow problem will recede. Fresh snow and winds will continue to form new snowdrift accumulations.

Avalanche problems



Danger ratings



Expositions



Niedere Tauern Süd, Ankogelgruppe, Muhr, Nockberge



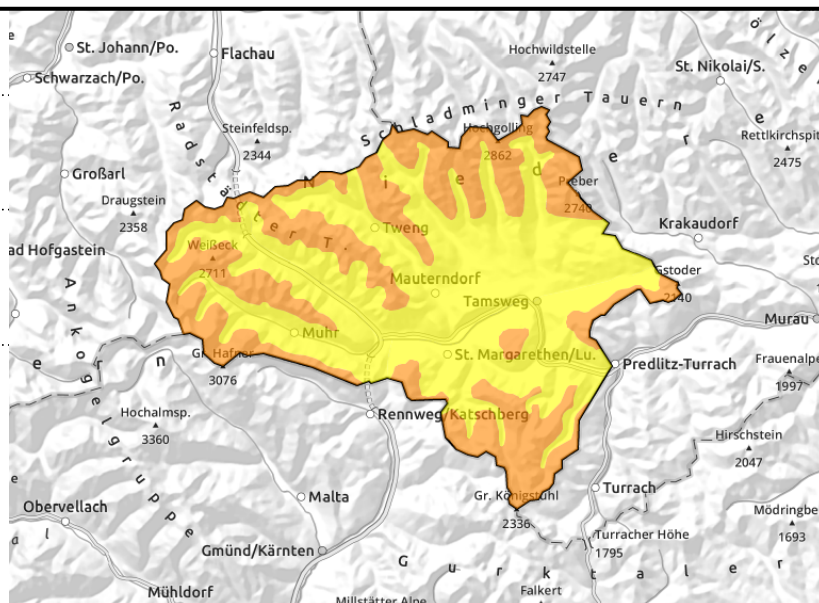
timberline



near to and distant from ridgelines, in gullies, steep bowls



triggerable in transitions from shallow to deep snow



Fresh and older snowdrift accumulations

Strong-velocity southerly winds will generate fresh snowdrift accumulations on north-facing slopes on Thursday. Gullies and bowls are filled after the latest round of foehn wind. A slab avalanche can be triggered by one single skier in steep terrain near to and distant from ridgelines and in gullies, bowls. Caution: read the signs of wind! Superficial avalanches can fracture down to deeper layers (old-snow problem) and grow to medium, in isolated cases to large size.

Snowpack structure

Strong northerly winds on Tuesday transported the snow, formed fresh drifts which were deposited on top of cold, loose snow. On Wednesday the snowpack was able to settle somewhat. On Thursday, strong southerly winds will deposit drifts on north-facing slopes. In the old snow lying beneath, the crust is only apparently stable, inside this there are soft, weak layers of faceted crystals lurking.

Weather

Strong W/S winds. In the morning the visibility will be good, some sunshine is anticipated. In the afternoon, cloud cover will become dense, a bit of snowfall is expected. At 2000 m, -6 to -3 degrees.

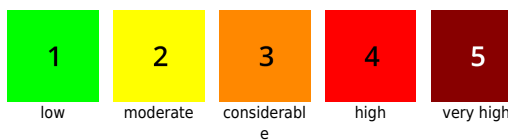
Outlook

On Friday, strong winds will generate fresh snowdrifts.

Avalanche problems



Danger ratings

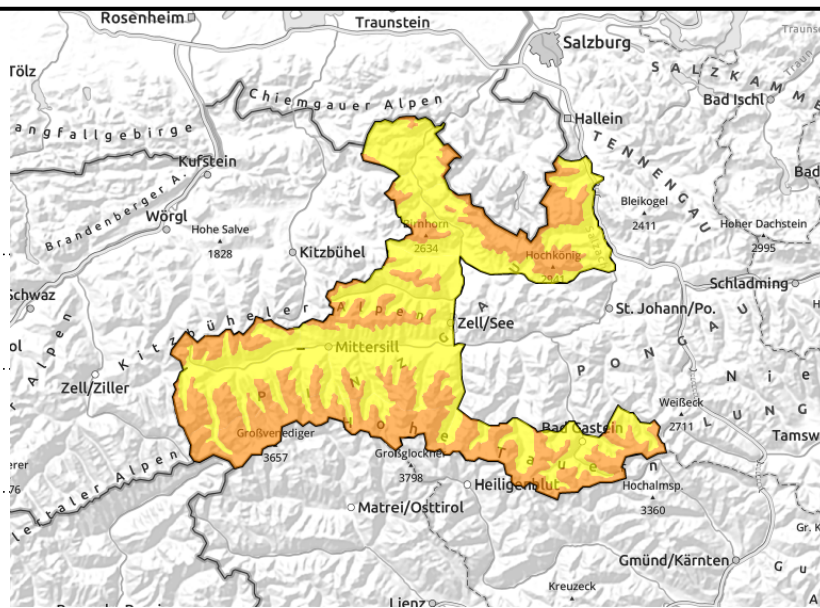


Expositions



28.01.2021, morning

Steinernes Meer, Hochkönig, Hagengebirge, Göllstock, Chiemgauer Alpen, Heutal, Reiteralpe, Loferer und Leoganger Steinberge, Kitzbüheler Alpen, Glemmtal, Oberpinzgauer Grasberge, Großvenedigergruppe Nord, Glocknergruppe Nord, Glocknergruppe Alpenhauptkamm, Großvenedigergruppe Alpenhauptkamm, Goldberggruppe Alpenhauptkamm



forestline



above treeline



as rainfall sets in, swiftly rising snowfall level

Fresh snow, rainfall, wind: increasing avalanche danger during the day

An unfavourable day for backcountry activities.

As of midday, danger of triggering a slab above the treeline will increase significantly due to heavy snowfall and wind. Slabs are very easily triggered on many steep slopes in the afternoon, can also trigger naturally. Due to the old-snow problem, even large-sized avalanches are possible through the settling impulse of the warm snow.

At low and intermediate altitudes, heavy rainfall will cause increasingly frequent naturally triggered wet-snow avalanches on steep hillsides and in gullies starting at midday.

Snowpack structure

On Thursday, fresh snow and winds will generate new snowdrift accumulations. The fresh snow is noticeably warmer than the recent snowfall, can thus be easily triggered. Also the old snowpack has unfavourable layers, with faceted crystals lurking beneath melt-freeze crusts.

Weather

Visibility is poor. In the morning, intermittent snowfall. In the afternoon, heavy snowfall and rainfall are expected. At high altitudes of the Hochkönig and Hohe Tauern, about 30-40 cm of fresh snow is anticipated. The snowfall level will ascend by evening to nearly 2000 m in some places. Winds will be brisk from the southwest in the morning, in the afternoon blowing at storm strength from the west.

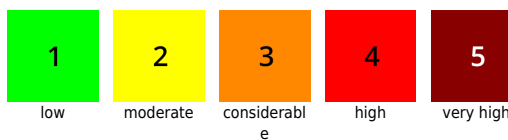
Outlook

On Friday, the wet-snow problem will recede as a result of lower temperatures. Fresh snow and stormy winds will continue to form fresh snowdrift accumulations.

Avalanche problems



Danger ratings

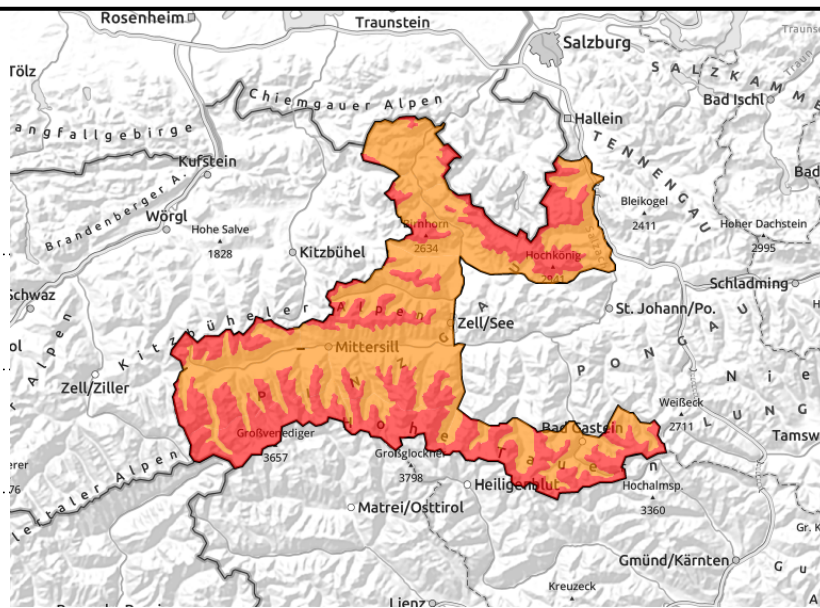


Expositions



28.01.2021, afternoon

Steinernes Meer, Hochkönig, Hagengebirge, Göllstock, Chiemgauer Alpen, Heutal, Reiteralpe, Loferer und Leoganger Steinberge, Kitzbüheler Alpen, Glemmtal, Oberpinzgauer Grasberge, Großvenedigergruppe Nord, Glocknergruppe Nord, Glocknergruppe Alpenhauptkamm, Großvenedigergruppe Alpenhauptkamm, Goldberggruppe Alpenhauptkamm



forestline



above treeline



as rainfall sets in, swiftly rising snowfall level

Fresh snow, rainfall, wind: increasing avalanche danger during the day

An unfavourable day for backcountry activities.

As of midday, danger of triggering a slab above the treeline will increase significantly due to heavy snowfall and wind. Slabs are very easily triggered on many steep slopes in the afternoon, can also trigger naturally. Due to the old-snow problem, even large-sized avalanches are possible through the settling impulse of the warm snow.

At low and intermediate altitudes, heavy rainfall will cause increasingly frequent naturally triggered wet-snow avalanches on steep hillsides and in gullies starting at midday.

Snowpack structure

On Thursday, fresh snow and winds will generate new snowdrift accumulations. The fresh snow is noticeably warmer than the recent snowfall, can thus be easily triggered. Also the old snowpack has unfavourable layers, with faceted crystals lurking beneath melt-freeze crusts.

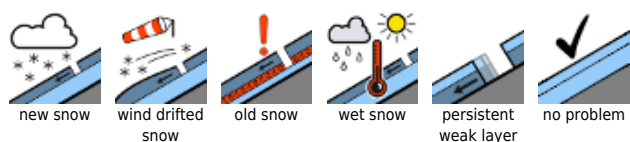
Weather

Visibility is poor. In the morning, intermittent snowfall. In the afternoon, heavy snowfall and rainfall are expected. At high altitudes of the Hochkönig and Hohe Tauern, about 30-40 cm of fresh snow is anticipated. The snowfall level will ascend by evening to nearly 2000 m in some places. Winds will be brisk from the southwest in the morning, in the afternoon blowing at storm strength from the west.

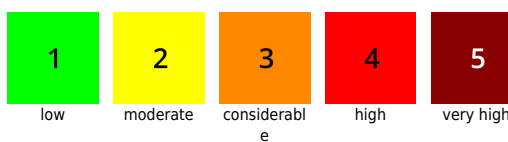
Outlook

On Friday, the wet-snow problem will recede as a result of lower temperatures. Fresh snow and stormy winds will continue to form fresh snowdrift accumulations.

Avalanche problems



Danger ratings

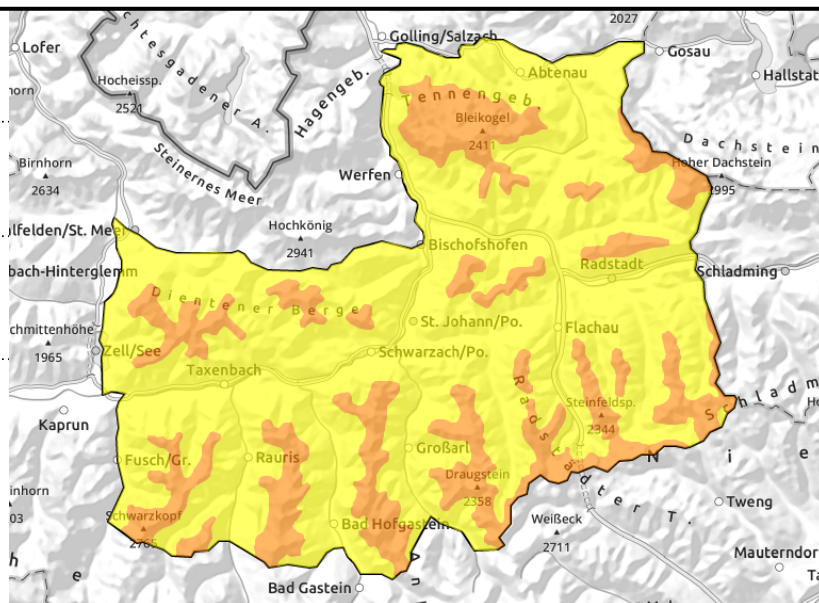


Expositions



28.01.2021, morning

Tennengebirge, Gosaukamm, Pongauer Grasberge, Dientner Grasberge, Goldberggruppe Nord, Niedere Tauern Nord, Niedere Tauern Alpenhauptkamm



Warm front bringing heavy precipitation and wind as of midday

Avalanche danger levels will increase during the daytime.

At low and intermediate altitudes the heavy rainfall will make naturally triggered wet-snow avalanches more frequent starting at midday. On steep hillsides and in gullies, avalanches can be expected.

Above the treeline, fresh snowdrift accumulations can be easily triggered, particularly in N-E aspects and in gullies and bowls in all aspects. In the evening, avalanche danger will probably near Danger Level 4 at high altitude.

Snowpack structure

Warmer fresh snow and snowdrifts deposited atop cold powder. Also the old snowpack is unfavourably layered, faceted crystals lurk beneath the melt-freeze crusts.

Weather

Visibility will deteriorate during the daytime. In the afternoon, visibility will approach zero. In the morning, intermittent snowfall; in the afternoon, heavy rainfall and snowfall. Brisk SW winds in the morning, stormy westerly wind in the afternoon. The snowfall level will ascend by evening to nearly 1600 m. At 2000 m, temperatures will rise from -6 to -2 degrees.

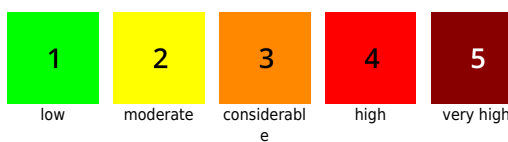
Outlook

Fresh snow and wind will generate new drifts on Friday. The wet-snow problem will recede as a result of lower temperatures.

Avalanche problems



Danger ratings



Expositions



28.01.2021, afternoon

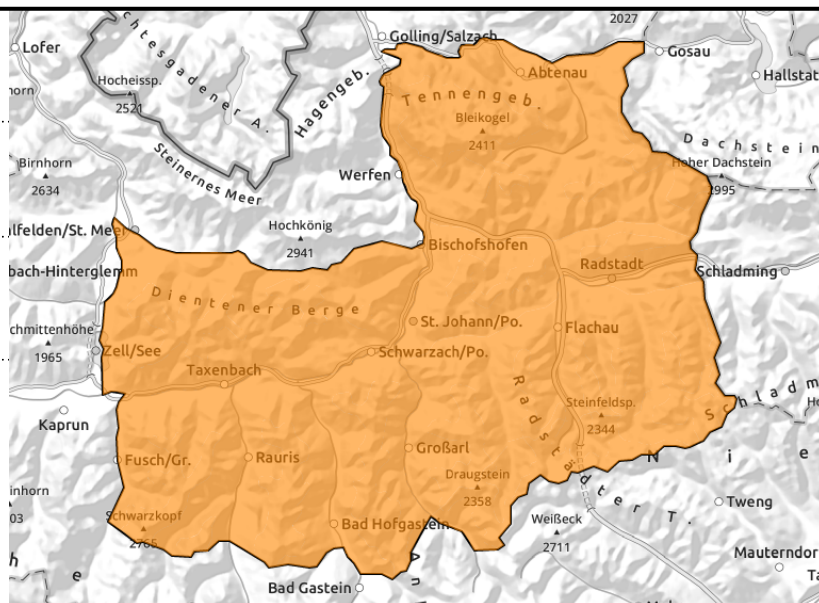
Tennengebirge, Gosaukamm, Pongauer Grasberge, Dientner Grasberge, Goldberggruppe Nord, Niedere Tauern Nord, Niedere Tauern Alpenhauptkamm



as rainfall sets in



above timberline



Warm front bringing heavy precipitation and wind as of midday

Avalanche danger levels will increase during the daytime.

At low and intermediate altitudes the heavy rainfall will make naturally triggered wet-snow avalanches more frequent starting at midday. On steep hillsides and in gullies, avalanches can be expected.

Above the treeline, fresh snowdrift accumulations can be easily triggered, particularly in N-E aspects and in gullies and bowls in all aspects. In the evening, avalanche danger will probably near Danger Level 4 at high altitude.

Snowpack structure

Warmer fresh snow and snowdrifts deposited atop cold powder. Also the old snowpack is unfavourably layered, faceted crystals lurk beneath the melt-freeze crusts.

Weather

Visibility will deteriorate during the daytime. In the afternoon, visibility will approach zero. In the morning, intermittent snowfall; in the afternoon, heavy rainfall and snowfall. Brisk SW winds in the morning, stormy westerly wind in the afternoon. The snowfall level will ascend by evening to nearly 1600 m. At 2000 m, temperatures will rise from -6 to -2 degrees.

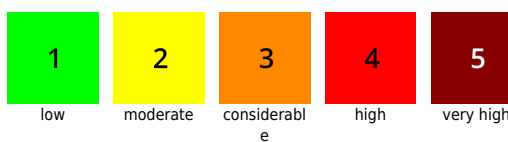
Outlook

Fresh snow and wind will generate new drifts on Friday. The wet-snow problem will recede as a result of lower temperatures.

Avalanche problems



Danger ratings



Expositions

