

Pay attention to wind signs + concealed old-snow problem

	<p>Osterhorngruppe, Gamsfeldgruppe, Tennengebirge, Gosaukamm, Untersbergstock, Steinernes Meer, Hochkönig, Hagengebirge, Göllstock, Loferer und Leoganger Steinberge, Chiemgauer Alpen, Heutal, Reiteralpe, Kitzbüheler Alpen, Glemmtal, Oberpinzgauer Grasberge, Großvenedigergruppe Nord, Großvenedigergruppe Alpenhauptkamm, Glocknergruppe Nord, Glocknergruppe Alpenhauptkamm, Goldberggruppe Alpenhauptkamm, Niedere Tauern Alpenhauptkamm</p>	
	<p>forestline</p>	<p>Dientner Grasberge, Goldberggruppe Nord, Pongauer Grasberge, Niedere Tauern Nord</p>
	<p>1500 m</p>	<p>Niedere Tauern Süd, Ankogelgruppe, Muhr, Nockberge</p>

Avalanche problems



Danger ratings

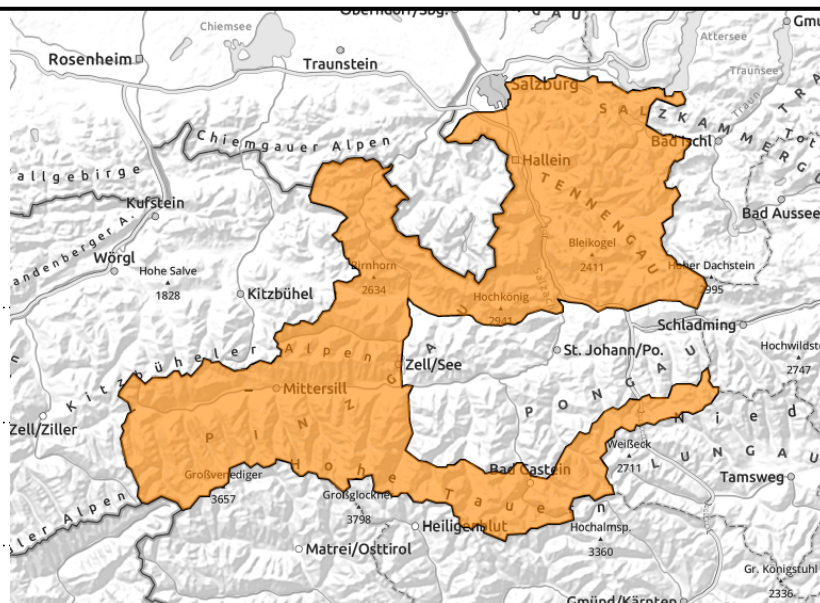


Expositions



27.01.2021

Osterhorngruppe, Gamsfeldgruppe, Tennengebirge, Gosaukamm, Untersbergstock, Steinernes Meer, Hochkönig, Hagengebirge, Göllstock, Loferer und Leoganger Steinberge, Chiemgauer Alpen, Heutal, Reiteralpe, Kitzbüheler Alpen, Glemmtal, Oberpinzgauer Grasberge, Großvenedigergruppe Nord, Großvenedigergruppe Alpenhauptkamm, Glocknergruppe Nord, Glocknergruppe Alpenhauptkamm, Goldberggruppe Alpenhauptkamm, Niedere Tauern Alpenhauptkamm



near to and distant from ridgelines, easily triggered



triggerable in transitions from shallow to deep snow and in shallow-snow zones

Snowdrifts easily triggerable

Tuesday's snowdrift accumulations are easily triggered: pay attention to wind signs. Most avalanche prone locations are found in N-E-S aspects, both near to and distant from ridgelines, behind protruberances. A small-to-medium slab can be triggered even by the weight of one single skier, and potentially fracture deeper down and grow to a large-sized avalanche. The weak old snowpack above forested zones can be triggered in shallow-snow zones. Backcountry skiing tours require experience in assessing avalanche risks on-site. The current CONSIDERABLE avalanche danger is ranked at the upper notch of this danger level.

In extremely steep terrain, naturally triggered avalanches can trigger with big powder clouds.

Snowpack structure

The snowdrifts / fresh snow from Tuesday (30-60 cm since Monday afternoon) lies deposited atop the cold snow from the weekend, a potential weak layer for slabs. Also inside the fresh snow, avalanches could trigger. In the old snow beneath it, which only apparently has a stable crust, there are soft layers of faceted crystals, in other words, yet another weak layer.

Weather

In the morning and until past noon, visibility will be generally good, intermittent sunshine is anticipated. Winds will be light. In the afternoon, cloud cover will become dense from the west, visibility will deteriorate, snowfall will set in. Temperatures will rise slightly. At midday at 2000 m, -9 degrees; at 3000 m, -15 degrees.

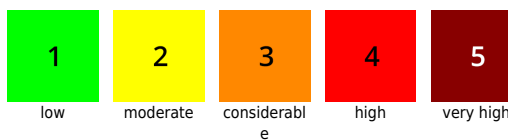
Outlook

As a result of a warm front (lots of fresh snow, amid rising temperatures) avalanche danger will increase to HIGH on Thursday.

Avalanche problems



Danger ratings



Expositions



27.01.2021

Dientner Grasberge, Goldberggruppe Nord, Pongauer Grasberge, Niedere Tauern Nord



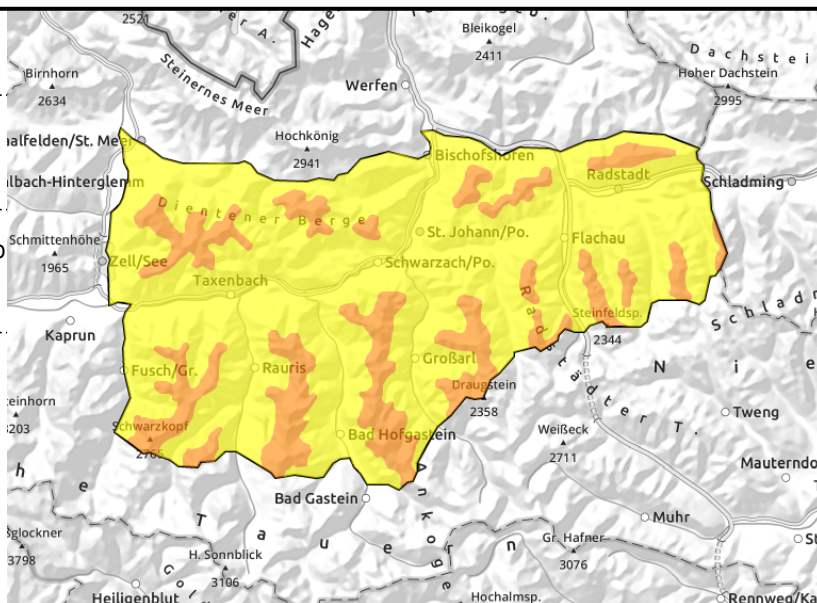
forestline



near ridgelines, in gullies, steep bowls



triggerable in transitions from shallow to deep snow, in shallow-snow zones



Circumvent fresh snowdrift accumulations!

A slab can be triggered even by the weight of one single skier. Most danger zones occur in N-E-S aspects, primarily near to ridgelines above the treeline. There is still beautiful powder in wind-protected areas. Superficial avalanches can fracture down to deeper layers (old-snow problem) and thus grow to medium, in isolated cases even to large size.

Snowpack structure

The snowdrifts / fresh snow from Tuesday (30 cm since Monday evening) lies deposited atop cold snow from the weekend, potential fracture surfaces for slabs. In the old snowpack beneath that, which only apparently has a stable crust. there are soft, weak layers of faceted crystals.

Weather

In the morning and until past noon, visibility will be generally good, intermittent sunshine is anticipated. Winds will be light. In the afternoon, cloud cover will become dense from the west, visibility will deteriorate, snowfall will set in. Temperatures will rise slightly. At midday at 2000 m, -9 degrees; at 3000 m, -15 degrees.

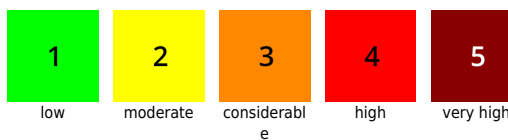
Outlook

On Thursday, avalanche danger will increase as a result of the "warmer" fresh snow and wind.

Avalanche problems



Danger ratings



Expositions



27.01.2021

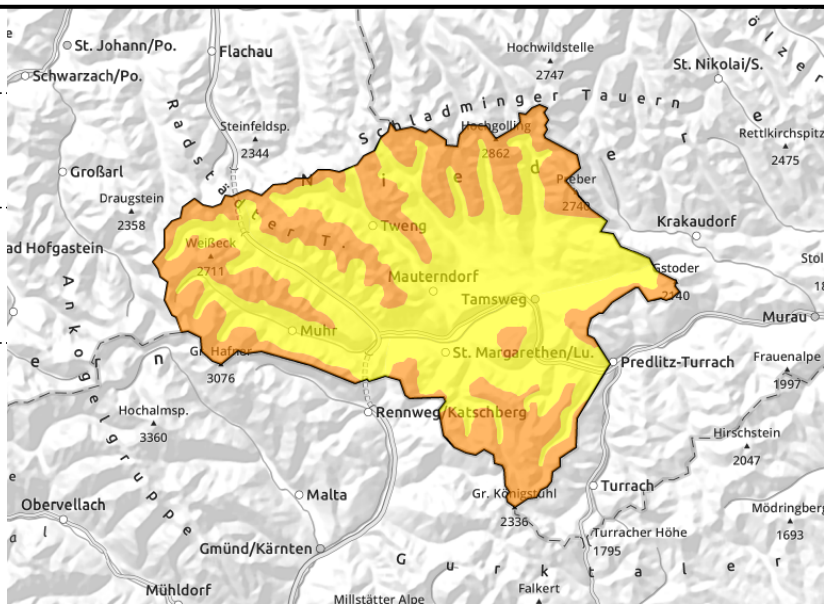
Niedere Tauern Süd, Ankogelgruppe, Muhr, Nockberge



near to and distant from ridgelines, in gullies, steep bowls



triggerable in transitions from shallow to deep snow



Northerly foehn wind generated fresh snowdrifts on Tuesday

Triggering slab avalanches is possible on many steep slopes above 1500 m, even the weight of one single skier is sufficient. Potential danger zones occur primarily in E-S-W aspects, and in gullies and bowls in all aspects. This applies to steep terrain near to and distant from ridgelines (snowdrift problem). Superficial releases can fracture down to deeper layers (old-snow problem) and then grow to medium, in isolated cases also to large size.

Snowpack structure

Strong northerly winds generated fresh snowdrifts on Tuesday, deposited on cold, loosely-packed snow. In the old snow beneath this, with only an apparently stable crust, there are also weak, soft layers of faceted crystals embedded.

Weather

Visibility will generally be good, intermittent sunshine is anticipated. The brisk NW winds will slacken off in the afternoon. Temperatures will rise slightly. At midday at 2000 m, -9 degrees.

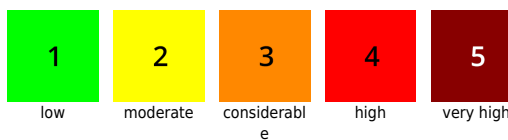
Outlook

The CONSIDERABLE avalanche danger will persist.

Avalanche problems



Danger ratings



Expositions

