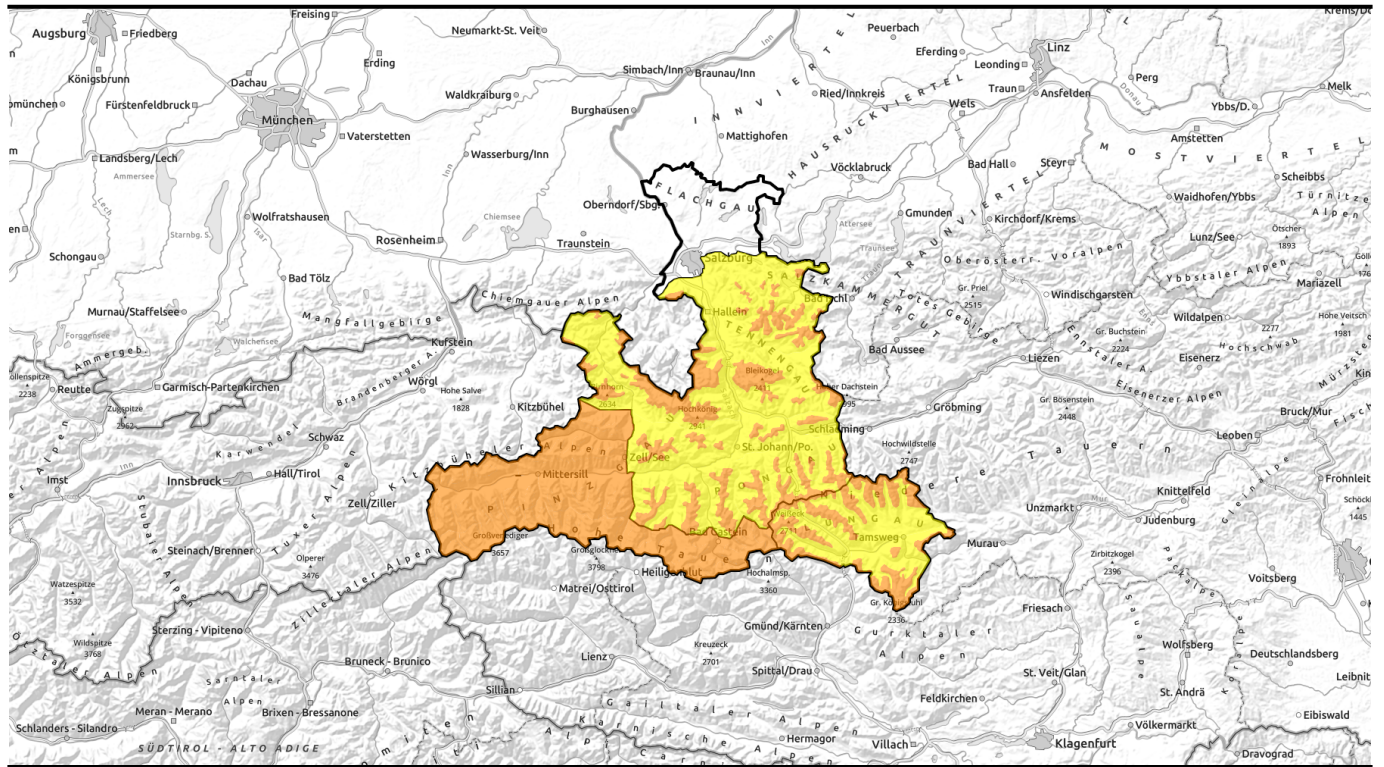


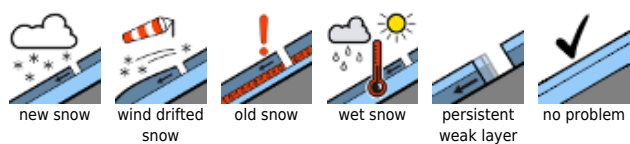
20.01.2021



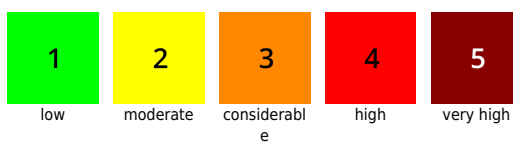
Persistent trigger sensitivity

		<p>Kitzbüheler Alpen, Glemmtal, Oberpinzgauer Grasberge, Großvenedigergruppe Nord, Glocknergruppe Nord, Großvenedigergruppe Alpenhauptkamm, Glocknergruppe Alpenhauptkamm, Goldberggruppe Alpenhauptkamm</p>	
	<p>1500 m</p>	<p>Chiemgauer Alpen, Heutal, Reiteralpe, Loferer und Leoganger Steinberge, Steinernes Meer, Hochkönig, Hagengebirge, Göllstock, Goldberggruppe Nord, Dientner Grasberge, Osterhorngruppe, Gamsfeldgruppe, Untersbergstock, Niedere Tauern Nord, Tennengebirge, Gosaukamm, Pongauer Grasberge, Niedere Tauern Alpenhauptkamm</p>	
	<p>forestline</p>	<p>Niedere Tauern Süd, Ankogelgruppe, Muhr, Nockberge</p>	

Avalanche problems



Danger ratings



Expositions



20.01.2021

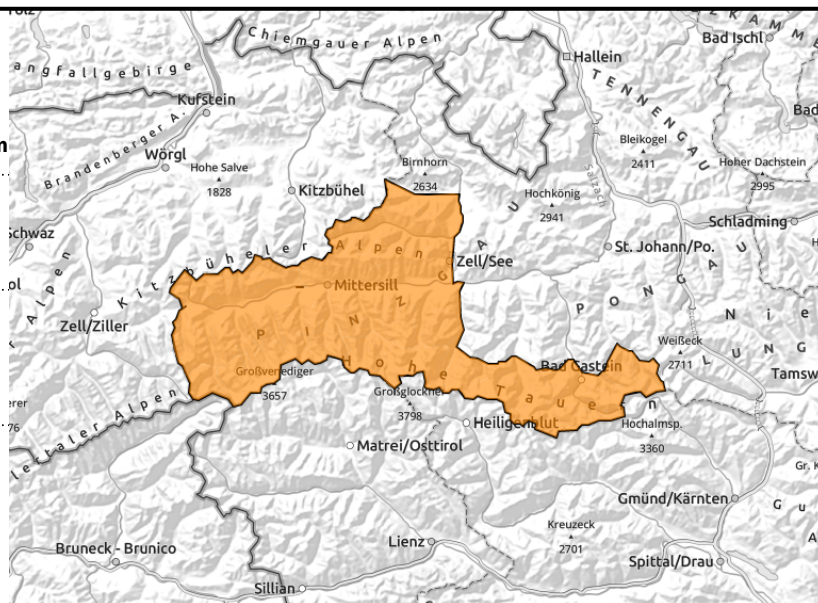
Kitzbüheler Alpen, Glemmtal, Oberpinzgauer Grasberge, Großvenedigergruppe Nord, Glocknergruppe Nord, Großvenedigergruppe Alpenhauptkamm, Glocknergruppe Alpenhauptkamm, Goldberggruppe Alpenhauptkamm



near to and distant from ridge/lines, on unfavourable base



triggerable in transitions from shallow to deep snow and if fractures reach to deeper layers



Trigger sensitive snowpack also at intermediate altitudes

The danger of avalanches is **CONSIDERABLE**. Triggering a slab avalanche is possible by minimum additional loading on many slopes behind protruberances and in wind-loaded gullies and bowls, particularly in east and southwest aspects. Avalanche prone locations are found also in sparsely wooded zones. Winter sports in outlying terrain demand experience in avalanche risk assessment on-site. Avalanches can grow to medium size; if they fracture down deeper in the snowpack they can also grow to large size.

Snowpack structure

The most recent fresh snow (Saturday, cold; Sunday/Monday, warmer, subsequently a noticeable rise in temperature) covers an unfavourable old snowpack base (bonded snow atop loose, faceted crystals, also surface hoar in wind-protected terrain). In addition, strong SW/NW winds (in high alpine regions also N/NE; in the Tauern also southerly wind) have transported the fresh snow and generated bonded snowdrift accumulations. Fractures occur inside the fresh snow and drifts as well as inside the old snowpack (faceted crystals, hoar).

Weather

On Wednesday, visibility will be quite good in the dry air, sunshine will be frequent. Thin cloudbanks will pass through above summit level. During the course of the day, southerly winds will intensify. In the morning in the Tauern, southerly foehn winds will reach speeds of 40 km/hr, in the afternoon in the Tauern reaching 60 km/hr. Southerly winds will also arise in the Northern Alps. Temperatures will continue to rise: at midday at 2000 m, -3 degrees in the Tauern; +2 degrees in the Northern Alps; at 3000 m, -5 degrees.

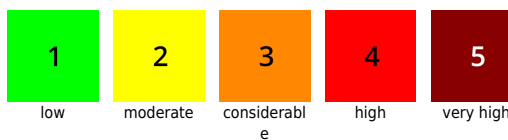
Outlook

Easily triggered, fresh snowdrift accumulations on north-facing slopes due to southerly foehn wind. The proneness to the old snowpack triggering will decrease only very slowly.

Avalanche problems



Danger ratings

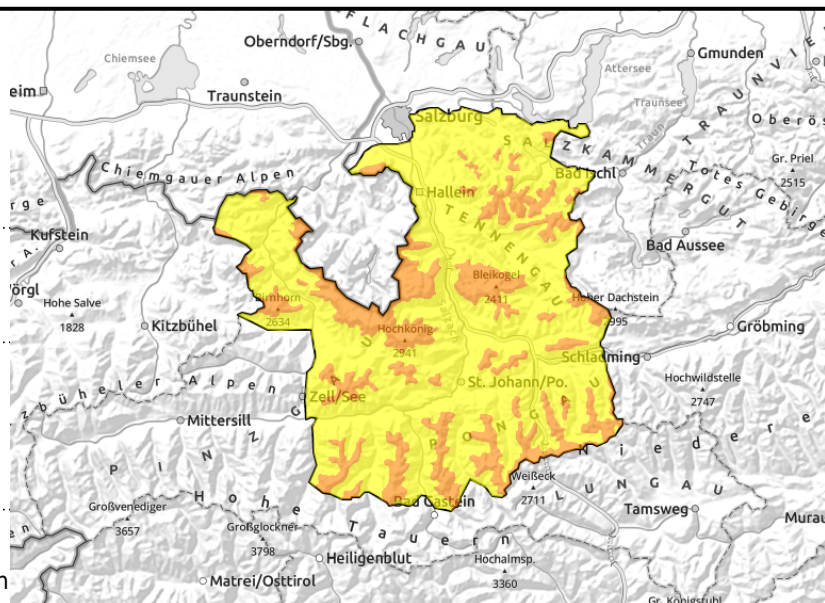


Expositions



20.01.2021

Chiemgauer Alpen, Heutal, Reiteralpe, Loferer und Leoganger Steinberge, Steinernes Meer, Hochkönig, Hagengebirge, Göllstock, Goldberggruppe Nord, Dientner Grasberge, Osterhorngruppe, Gamsfeldgruppe, Untersbergstock, Niedere Tauern Nord, Tennengebirge, Gosaukamm, Pongauer Grasberge, Niedere Tauern Alpenhauptkamm



near to and distant from ridgelines, behind protruberances, in gullies, steep bowls



triggerable in transitions from shallow to deep snow and when superficial triggerings fracture to deeper down

Snowdrift problem + old-snow problem

Avalanche danger above 1500 m is CONSIDERABLE, below that altitude MODERATE. Slab avalanches are triggerable on many steep slopes, behind protruberances near to and distant from ridgelines, even by the weight of one single skier. Most avalanche prone locations occur in NW-E-S aspects in steep terrain, in wind-loaded gullies and bowls, and in steep, sparsely wooded zones at high altitude.

Snowpack structure

The most recent fresh snow (Saturday, cold; Sunday/Monday, warmer, subsequently a noticeable rise in temperature) covers an unfavourable old snowpack base (bonded snow atop loose, faceted crystals, also surface hoar in wind-protected terrain). In addition, strong SW/NW winds (in high alpine regions also N/NE; in the Tauern also southerly wind) have transported the fresh snow and generated bonded snowdrift accumulations. Fractures occur inside the fresh snow and drifts as well as inside the old snowpack (faceted crystals, hoar).

Weather

On Wednesday, visibility will be quite good in the dry air, sunshine will be frequent. Thin cloudbanks will pass through above summit level. During the course of the day, southerly winds will intensify. In the morning in the Tauern, southerly foehn winds will reach speeds of 40 km/hr, in the afternoon in the Tauern reaching 60 km/hr. Southerly winds will also arise in the Northern Alps. Temperatures will continue to rise: at midday at 2000 m, -3 degrees in the Tauern; +2 degrees in the Northern Alps; at 3000 m, -5 degrees.

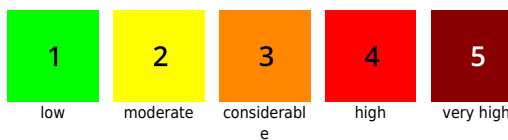
Outlook

Easily triggered, fresh snowdrift accumulations on north-facing slopes due to southerly foehn wind. The proneness to the old snowpack triggering will decrease only very slowly.

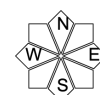
Avalanche problems



Danger ratings



Expositions



20.01.2021

Niedere Tauern Süd, Ankogelgruppe, Muhr, Nockberge



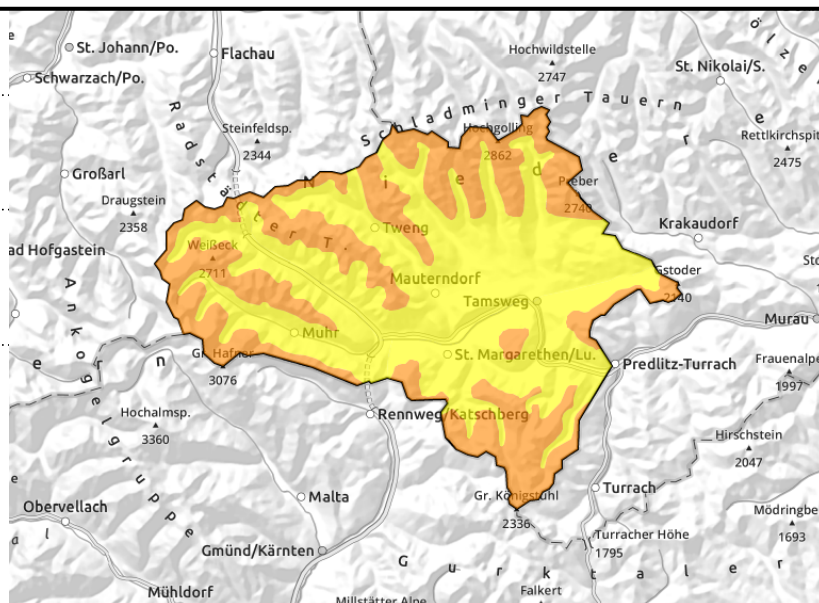
forestline



near to and distant from ridgelines, behind protruberances



triggerable in transitions from shallow to deep snow or by large additional loading



Fresh snowdrifts and unfavourable snowpack layering

Avalanche danger is **CONSIDERABLE** above the timberline, below that altitude danger is **MODERATE**. In steep terrain, slabs can be triggered even by minimum additional loading. Most avalanche prone locations occur in NW-E-S aspects and in wind-loaded gullies and bowls. Freshly generated snowdrifts are generally easy to recognize and should be circumvented under all circumstances. Superficially triggered small avalanches can fracture down to deeper layers of the snowpack and, in isolated cases, then grow to large size.

Snowpack structure

As temperatures rise, strong NW winds are transporting the snow and generating compact snowdrift accumulations. Above the treeline, conditions alternate even over small-spread spaces: windward surfaces are frequently windblown whereas wind-protected spaces still have loosely-packed snow. The snowpack layering is unfavourable: fracture lines for slabs are evident both inside the fresh snow and drifts and inside the old snowpack beneath them.

Weather

On Wednesday, visibility in the dry air will be quite good, sunshine will be frequent. Thin cloudbanks will pass through above summit level. During the course of the day, winds will intensify, in the morning hours rising to 30-50 km/hr from W/SW. Temperatures will rise further: at midday at 2000m, to -3 degrees; at 3000 m, to -5 degrees.

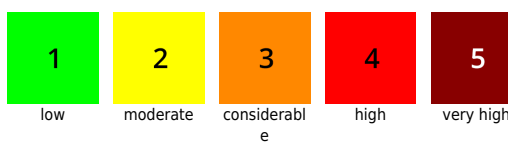
Outlook

Easily triggerable fresh snowdrifts will remain treacherous. The trigger-sensitivity of the old snowpack will recede only slowly.

Avalanche problems



Danger ratings



Expositions

