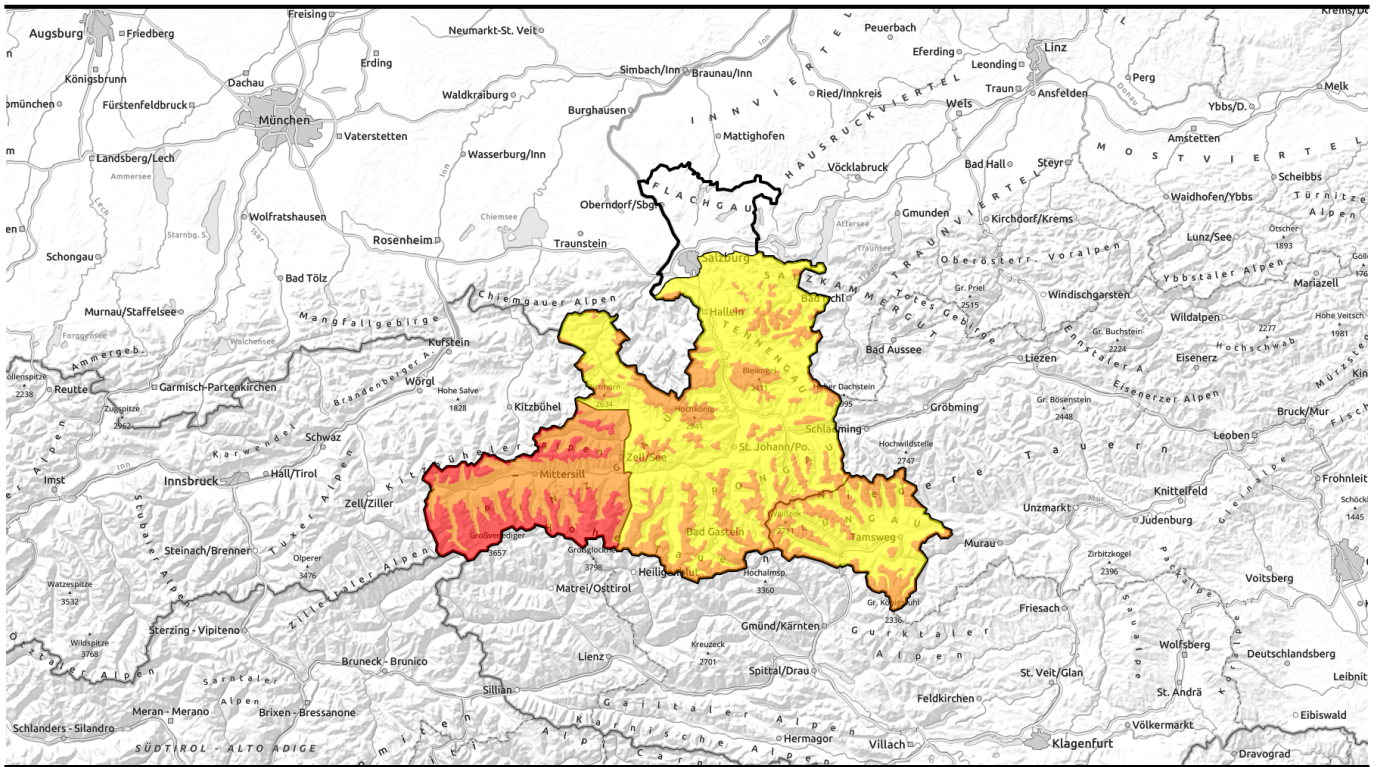


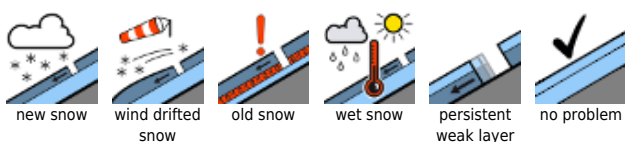
18.01.2021



Fresh snow and snowdrifts on unfavourable base

	<p>forestline</p>	<p>Kitzbüheler Alpen, Glemmtal, Oberpinzgauer Grasberge, Großvenedigergruppe Nord, Großvenedigergruppe Alpenhauptkamm, Glocknergruppe Nord, Glocknergruppe Alpenhauptkamm</p>	
	<p>forestline</p>	<p>Chiemgauer Alpen, Heutal, Reiteralpe, Loferer und Leoganger Steinberge, Steinernes Meer, Hochkönig, Hagengebirge, Göllstock, Untersbergstock, Osterhorngruppe, Gamsfeldgruppe, Tennengebirge, Gosaukamm, Dientner Grasberge, Pongauer Grasberge, Niedere Tauern Nord, Niedere Tauern Alpenhauptkamm, Goldberggruppe Nord, Goldberggruppe Alpenhauptkamm</p>	
	<p>forestline</p>	<p>Niedere Tauern Süd, Ankogelgruppe, Muhr, Nockberge</p>	

Avalanche problems



Danger ratings



Expositions



18.01.2021

Kitzbüheler Alpen, Glemmtal, Oberpinzgauer Grasberge, Großvenedigergruppe Nord, Großvenedigergruppe Alpenhauptkamm, Glocknergruppe Nord, Glocknergruppe Alpenhauptkamm



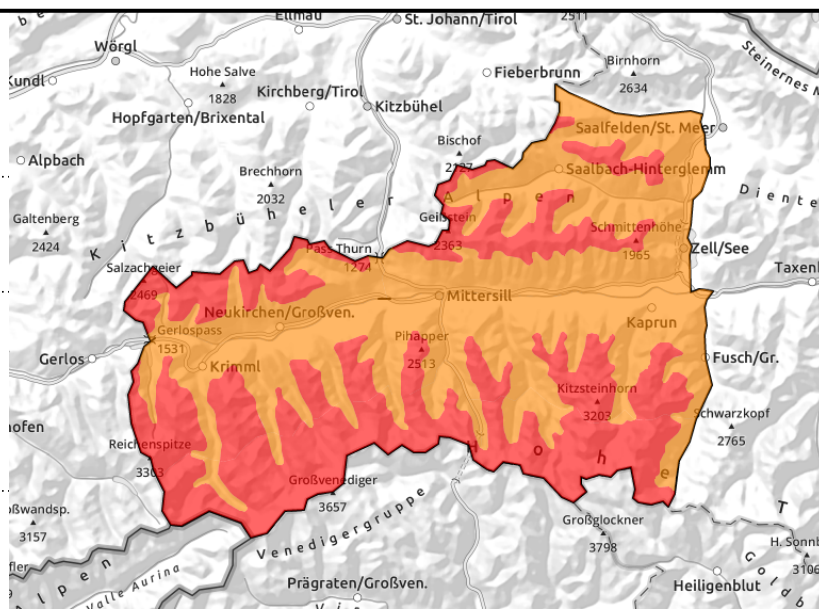
forestline



near to and distant from ridgelines, behind protruberances, on unfavourable base, easily triggered



on unfavourable base



fresh, easily triggered snowdrifts

Fresh snow plus winds have created HIGH avalanche danger above the treeline. Slab avalanches can be easily triggered on many slopes behind protruberances and in wind-loaded gullies and bowls, particularly in eastern aspects. Winter sports in outlying terrain require lots of experience in assessing avalanche risks on-site and deep knowledge of local terrain.

Also naturally triggered avalanches (with powder clouds) are possible, small-to-medium, in isolated cases large sized. Also loose-snow avalanches in all aspects are possible.

Snowpack structure

The snowpack layering is unfavourable. The snow which fell between Tuesday and Thursday has settled somewhat but is still poorly bonded with the old snowpack (faceted, soft layers with hoar in between). The fresh snow from Sunday and Monday is somewhat warmer than the cold snow on Saturday, so avalanches could also fracture at this borderline.

Weather

Visibility is poor. Fog, clouds, snowfall dominate. Strong NW winds make things worse. In the afternoon, the snowfall will gradually come to an end. At 2000 m, -10 degrees; at 3000 m, -15 degrees.

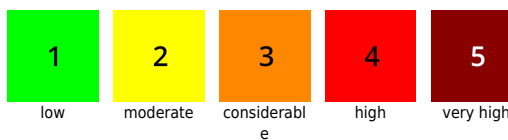
Outlook

The southerly winds on Tuesday will deposit snow on north-facing slopes. As a result of a marked rise in temperature, the snowpack will be able to settle.

Avalanche problems



Danger ratings

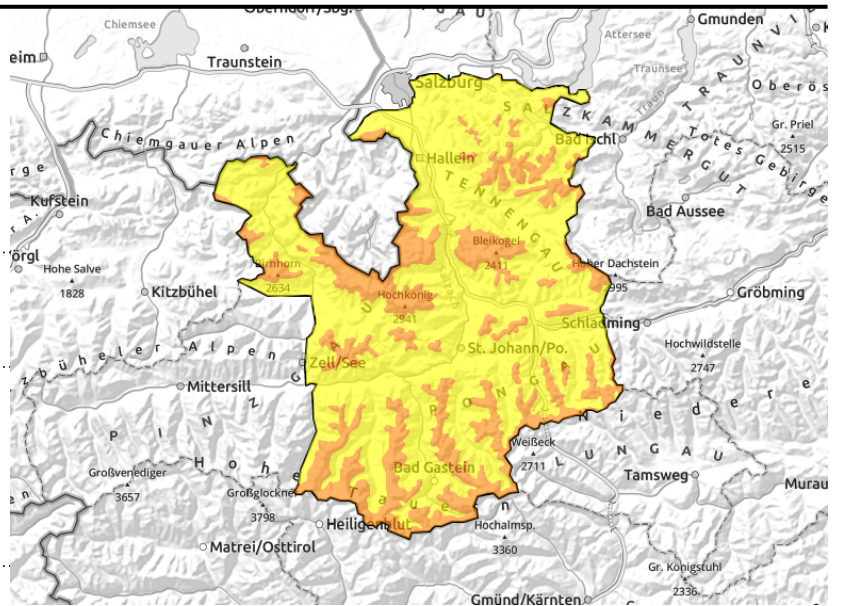


Expositions



18.01.2021

Chiemgauer Alpen, Heutal, Reiteralpe, Loferer und Leoganger Steinberge, Steinernes Meer, Hochkönig, Hagengebirge, Göllstock, Untersbergstock, Osterhorngruppe, Gamsfeldgruppe, Tennengebirge, Gosaukamm, Dientner Grasberge, Pongauer Grasberge, Niedere Tauern Nord, Niedere Tauern Alpenhauptkamm, Goldberggruppe Nord, Goldberggruppe Alpenhauptkamm



near to and distant from ridgelines, behind protruberances, far-reaching snowdrifts, exposed terrain is utterly windblown



on unfavourable base

Caution: fresh snowdrifts

Avalanche danger above the treeline is **CONSIDERABLE**. Fresh snow and winds have generated new snowdrift accumulations. Slab avalanches can be triggered on many steep slopes behind protruberances and abrupt change in the landscape distant from ridgelines even by the weight of one single skier. Most avalanche prone locations occur in NE-E-S aspects and in wind-loaded gullies and bowls.

Snowpack structure

Fresh snow and winds have generated new snowdrift accumulations. West-facing slopes, summits, combs and plateaus are utterly windblown. The snowpack layering is unfavourable. Slabs can fracture both between the latest layers of snow and snowdrifts and also at the borderlines to the old snowpack (expansively metamorphosed, faceted, soft, with hoar).

Weather

Visibility is poor. Snowfall and fog dominate. Strong NW winds make things worse. At 1500 m, -6 degrees.

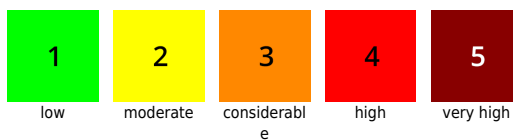
Outlook

Rising temperatures on Tuesday will help the snowpack to settle. On the Main Alpine Ridge, southerly foehn winds will deposit transported snow on north-facing slopes.

Avalanche problems



Danger ratings



Expositions



18.01.2021

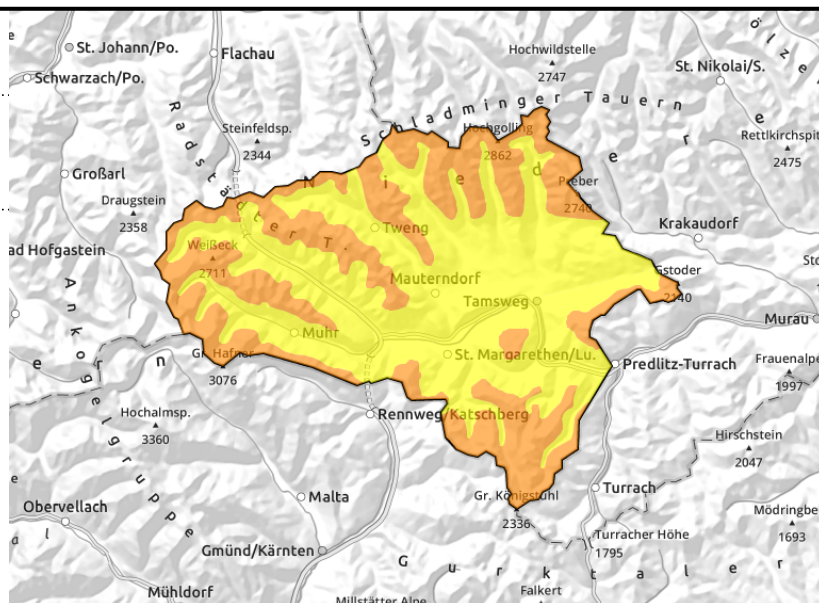
Niedere Tauern Süd, Ankogelgruppe, Muhr, Nockberge



forestline



near to and distant from ridgelines, behind protruberances



brisk northerly foehn wind generating fresh snowdrifts

Avalanche danger above the treeline is CONSIDERABLE. In steep terrain, slab avalanches can be triggered even by minimum additional loading. Most danger zones occur in NE-E-S aspects and in wind-loaded gullies and bowls.

Snowpack structure

The strong NW winds will transport the loose, cold snow. Windward surfaces are often completely windblown. The snowpack layering is poor. Slabs can fracture both at the border to the old snowpack and between the more recent layers of snowdrift and fresh snow.

Weather

Windy, with minor snowfall. Visibility will be adequate in some areas, but high summits will be shrouded in fog. At 2000 m, -10 degrees.

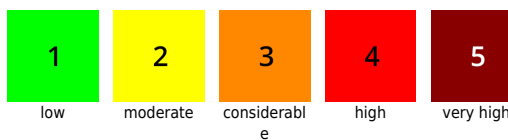
Outlook

With the rising temperatures starting on Tuesday, the snowpack will settle.

Avalanche problems



Danger ratings



Expositions

