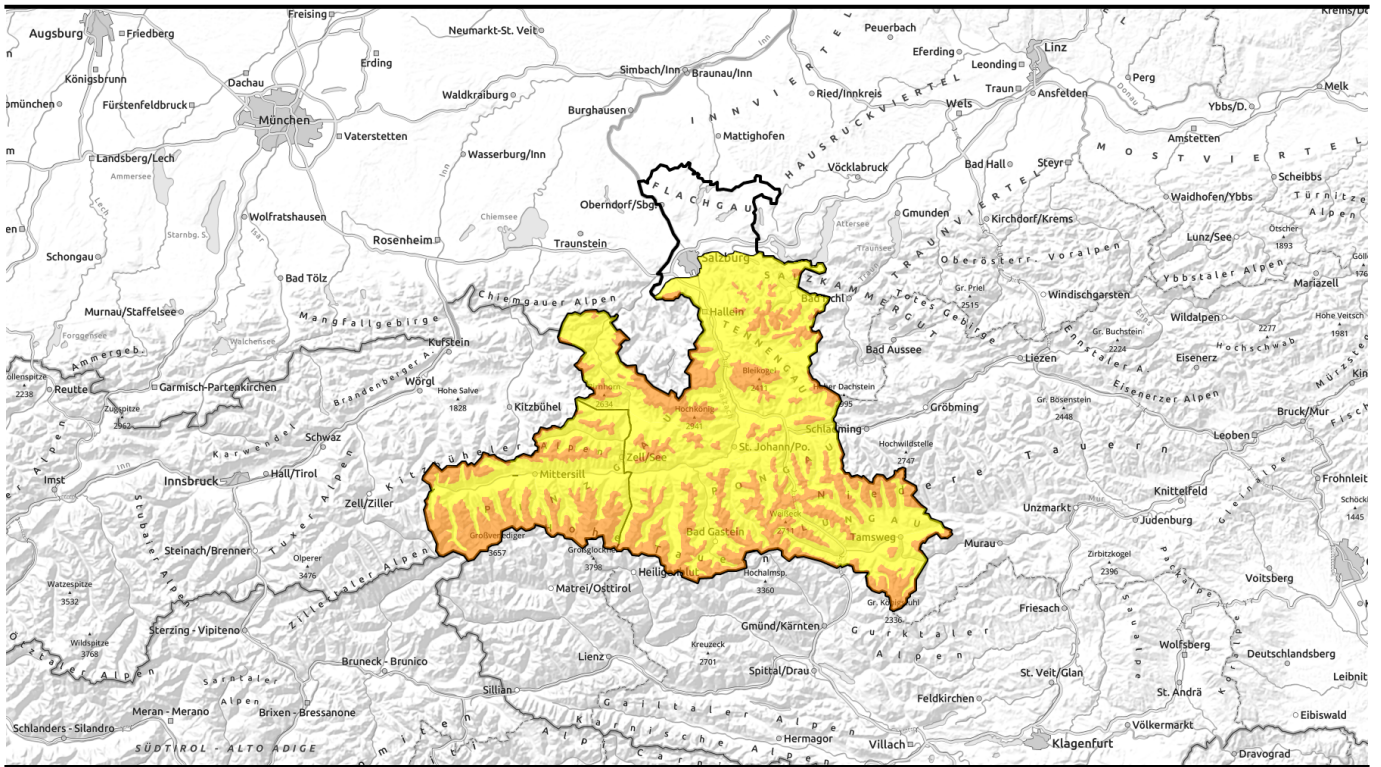


17.01.2021, morning



In some places HIGH avalanche danger



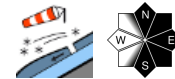
forestline

Oberpinzgauer Grasberge, Großvenedigergruppe Nord, Großvenedigergruppe Alpenhauptkamm, Glocknergruppe Nord, Glocknergruppe Alpenhauptkamm, Kitzbüheler Alpen, Glemmtal



forestline

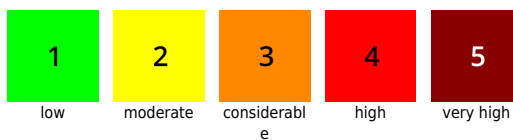
Chiemgauer Alpen, Heutal, Reiteralpe, Loferer und Leoganger Steinberge, Steinernes Meer, Hochkönig, Hagengebirge, Göllstock, Untersbergstock, Osterhorngruppe, Gamsfeldgruppe, Tennengebirge, Gosaukamm, Dientner Grasberge, Goldberggruppe Nord, Goldberggruppe Alpenhauptkamm, Pongauer Grasberge, Niedere Tauern Nord, Niedere Tauern Alpenhauptkamm, Ankogelgruppe, Muhr, Niedere Tauern Süd, Nockberge



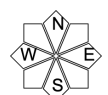
Avalanche problems



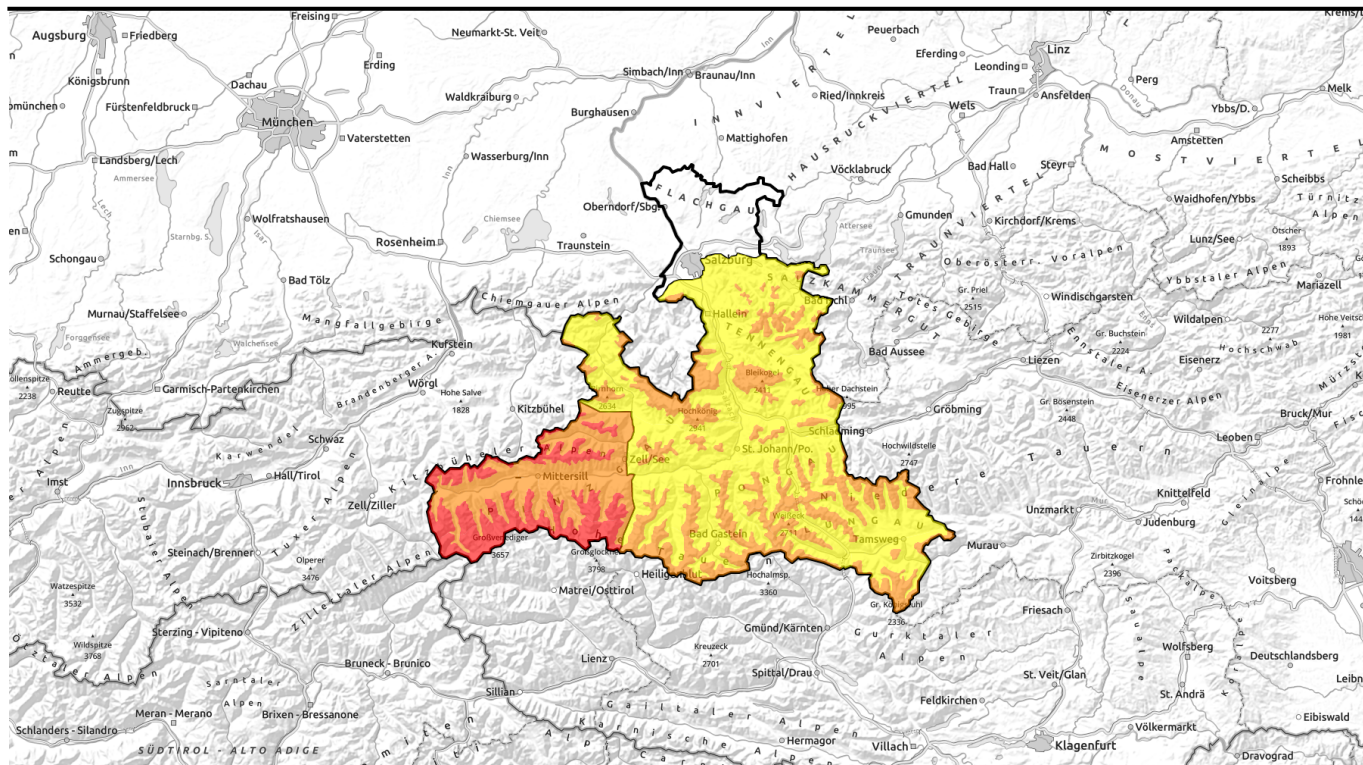
Danger ratings



Expositions



17.01.2021, afternoon



Teils GROßE Lawinengefahr



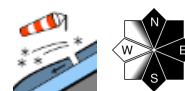
forestline

Oberpinzgauer Grasberge,
Großvenedigergruppe Nord,
Großvenedigergruppe
Alpenhauptkamm, Glocknergruppe
Nord, Glocknergruppe
Alpenhauptkamm, Kitzbüheler Alpen,
Glemmtal



forestline

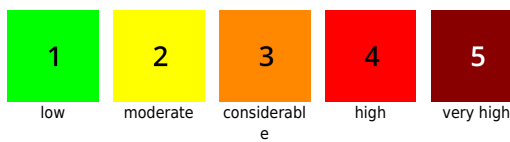
Chiemgauer Alpen, Heutal,
Reiteralpe, Loferer und Leoganger
Steinberge, Steinernes Meer,
Hochkönig, Hagengebirge, Göllstock,
Untersbergstock, Osterhorngruppe,
Gamsfeldgruppe, Tennengebirge,
Gosaukamm, Dientner Grasberge,
Goldberggruppe Nord,
Goldberggruppe Alpenhauptkamm,
Pongauer Grasberge, Niedere Tauern
Nord, Niedere Tauern
Alpenhauptkamm, Ankogelgruppe,
Muhr, Niedere Tauern Süd,
Nockberge



Avalanche problems



Danger ratings



Expositions



17.01.2021, morning

Oberpinzgauer Grasberge, Großvenedigergruppe Nord, Großvenedigergruppe Alpenhauptkamm, Glocknergruppe Nord, Glocknergruppe Alpenhauptkamm, Kitzbüheler Alpen, Glemmtal



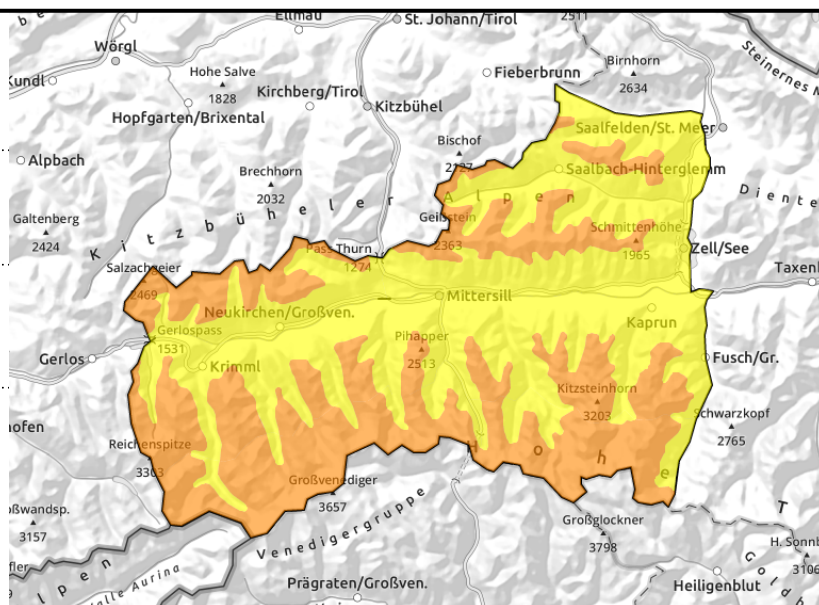
forestline



wind-ranging snowdrifts on unfavourable base



atop unfavourable base, lots of fresh snow



Avalanche danger increasing during the day

As a result of fresh snow and wind, avalanche danger will increase from CONSIDERABLE to HIGH during the course of the day. Slab avalanches can be easily triggered on many slopes, behind protruberances, in wind-loaded gullies and bowls, particularly on east-facing slopes. Winter sports in outlying terrain demand a great deal of experience in assessing avalanche risks on-site and solid knowledge of local terrain.

Also naturally triggered slab avalanche with powder clouds will release increasingly frequently in the afternoon, many small and medium, some large-sized releases. Also loosely-packed snow avalanches in all aspects are possible.

Snowpack structure

The snowpack layering is unfavourable. The snow which fell between Tuesday and Thursday has settled somewhat, but is still poorly bonded with the old snowpack (faceted crystals, soft layers with hoar in between). The fresh snow from Sunday is somewhat warmer than the cold snow from Saturday, so some avalanches will fracture also in this weak layer.

Weather

Visibility will be severely limited by clouds, fog, snowfall. By Monday morning, 20-40 cm of fresh snow is expected. Strong NW winds will be blowing. At 2500 m, -12 degrees.

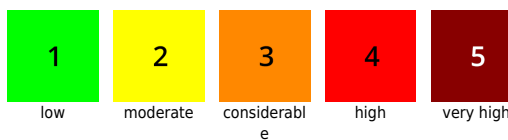
Outlook

On Monday, ongoing HIGH avalanche danger.

Avalanche problems



Danger ratings



Expositions



17.01.2021, afternoon

Oberpinzgauer Grasberge, Großvenedigergruppe Nord, Großvenedigergruppe Alpenhauptkamm, Glocknergruppe Nord, Glocknergruppe Alpenhauptkamm, Kitzbüheler Alpen, Glemmtal



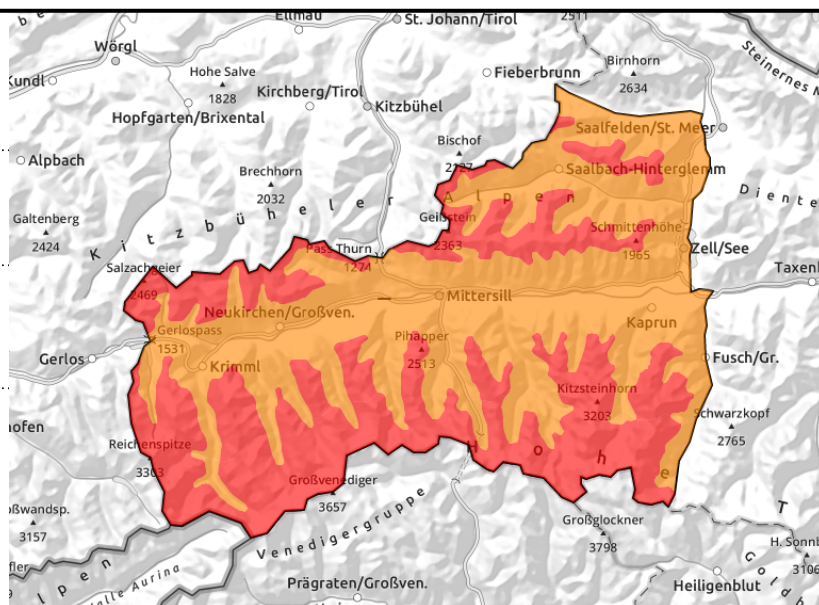
forestline



wind-ranging snowdrifts on unfavourable base



atop unfavourable base, lots of fresh snow



Avalanche danger increasing during the day

As a result of fresh snow and wind, avalanche danger will increase from CONSIDERABLE to HIGH during the course of the day. Slab avalanches can be easily triggered on many slopes, behind protruberances, in wind-loaded gullies and bowls, particularly on east-facing slopes. Winter sports in outlying terrain demand a great deal of experience in assessing avalanche risks on-site and solid knowledge of local terrain.

Also naturally triggered slab avalanche with powder clouds will release increasingly frequently in the afternoon, many small and medium, some large-sized releases. Also loosely-packed snow avalanches in all aspects are possible.

Snowpack structure

The snowpack layering is unfavourable. The snow which fell between Tuesday and Thursday has settled somewhat, but is still poorly bonded with the old snowpack (faceted crystals, soft layers with hoar in between). The fresh snow from Sunday is somewhat warmer than the cold snow from Saturday, so some avalanches will fracture also in this weak layer.

Weather

Visibility will be severely limited by clouds, fog, snowfall. By Monday morning, 20-40 cm of fresh snow is expected. Strong NW winds will be blowing. At 2500 m, -12 degrees.

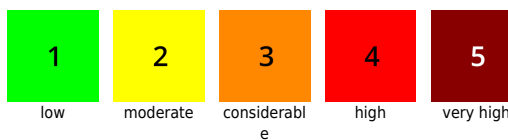
Outlook

On Monday, ongoing HIGH avalanche danger.

Avalanche problems



Danger ratings

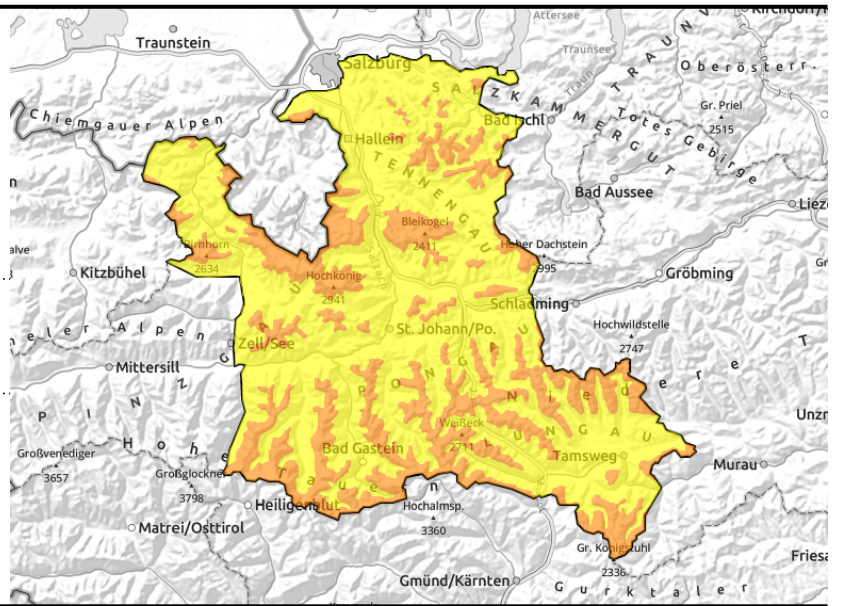


Expositions



17.01.2021

Chiemgauer Alpen, Heutal, Reiteralpe, Loferer und Leoganger Steinberge, Steinernes Meer, Hochkönig, Hagengebirge, Göllstock, Untersbergstock, Osterhorngruppe, Gamsfeldgruppe, Tennengebirge, Gosaukamm, Dientner Grasberge, Goldberggruppe Nord, Goldberggruppe Alpenhauptkamm, Pongauer Grasberge, Niedere Tauern Nord, Niedere Tauern Alpenhauptkamm, Ankogelgruppe, Muhr, Niedere Tauern Süd, Nockberge



forestline



near to and distant from ridgelines behind protruberances, in gullies in all aspects, on unfavourable base

Fresh and older snowdrifts on east-facing slopes

Avalanche danger above the timberline is CONSIDERABLE. Fresh snow and winds are generating new snowdrift accumulations. Slabs can be triggered on many steep slopes behind abrupt changes in the terrain, also distant from ridgelines, even by the weight of one single skier. Most avalanche prone locations are found in extended eastern aspects (N-E-S) and in wind-loaded gullies and bowls.

Snowpack structure

Fresh snow and winds are generated new snowdrift accumulations. West-facing terrain, summits, ridges and plateaus are frequently windblown. The snowpack layering is unfavourable. Slabs can fracture both between the recent layers of snow/drifts and at the borderline to the old snow (expansively metamorphosed, faceted, soft, with surface hoar).

Weather

Visibility is mostly poor, possibly improving in the morning in Niedere Tauern and Nockberge. In the Pinzgau, snowfall right from early morning hours, in Lungau as of midday. Fresh snow: 10-20 cm by Monday morning. Brisk NW winds will be blowing. Temperature at 2000 m: -11 degrees.

Outlook

Depending on amounts of fresh snow, avalanche danger could increase to HIGH in individual regions.

Avalanche problems



Danger ratings



Expositions

