

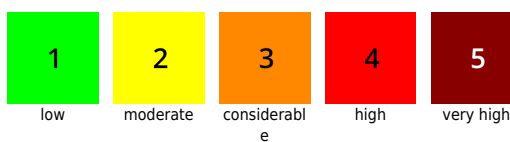
Ongoing treacherous snowdrift situation

| | | | |
|--|-------------------|---|--|
| | <p>forestline</p> | <p>Osterhorngruppe, Gamsfeldgruppe</p> | |
| | | <p>Tennengebirge, Gosaukamm</p> | |
| | <p>forestline</p> | <p>Untersbergstock, Steinernes Meer, Hochkönig, Hagengebirge, Göllstock, Chiemgauer Alpen, Heutal, Reiteralpe, Loferer und Leoganger Steinberge, Kitzbüheler Alpen, Glemmtal, Oberpinzgauer Grasberge, Dientner Grasberge, Goldberggruppe Alpenhauptkamm, Goldberggruppe Nord, Pongauer Grasberge, Niedere Tauern Nord, Niedere Tauern Alpenhauptkamm, Ankogelgruppe, Muhr, Niedere Tauern Süd, Nockberge, Glocknergruppe Nord, Glocknergruppe Alpenhauptkamm, Großvenedigergruppe Nord, Großvenedigergruppe Alpenhauptkamm</p> | |

Avalanche problems



Danger ratings



Expositions

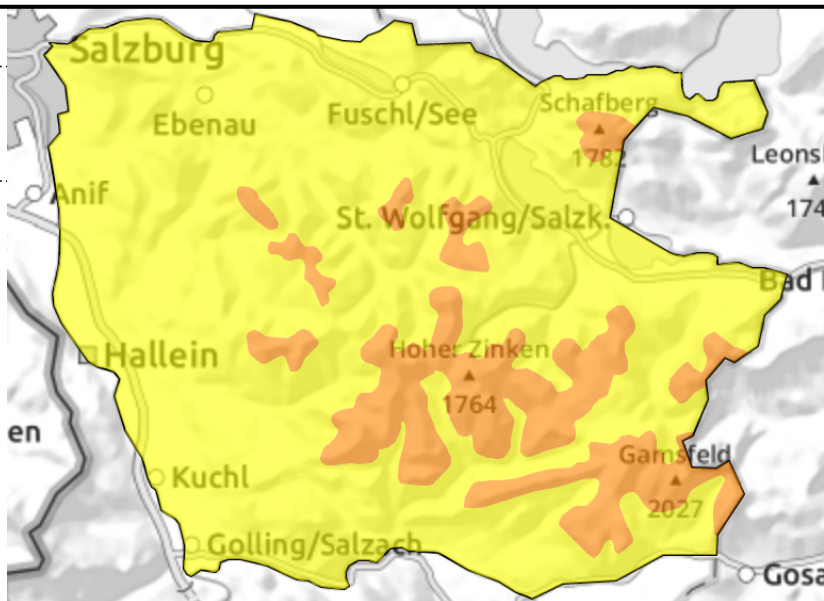


16.01.2021

Osterhorngruppe, Gamsfeldgruppe



Near to and distant from ridgelines, behind protruberances, triggerable in transitions from shallow to deep snow



Do not underestimate snowdrifts on east-facing slopes!

Avalanche danger above the timberline is CONSIDERABLE. Most avalanche prone locations are found on steep east-facing slopes and in wind-loaded gullies and bowls. A small-to-medium slab avalanche can be triggered even by the weight of one single skier (as avalanches on Friday amply demonstrated). Also whumpf noises and fracture cracks are clear and present signals of danger.

Snowpack structure

On a thin old snowpack whose surface is heavily faceted and covered with surface hoar, another 30 cm of fresh snow was deposited between Tuesday and Thursday amid heavy wind impact. Also on Saturday, W/NW winds can transport the snow in ridgeline terrain.

Weather

In the morning, visibility will be severely limited and minor snowfall is possible (5-10 cm). In the afternoon, visibility will improve somewhat. Cold NW winds will be brisk. At 1500 m: -11 degrees.

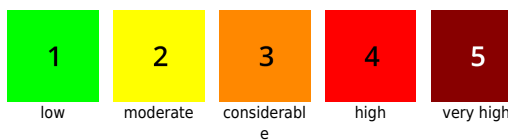
Outlook

On Sunday, fresh snowfall and winds will again generate snowdrift accumulations. Avalanche danger levels will remain considerable above the treeline.

Avalanche problems



Danger ratings



Expositions

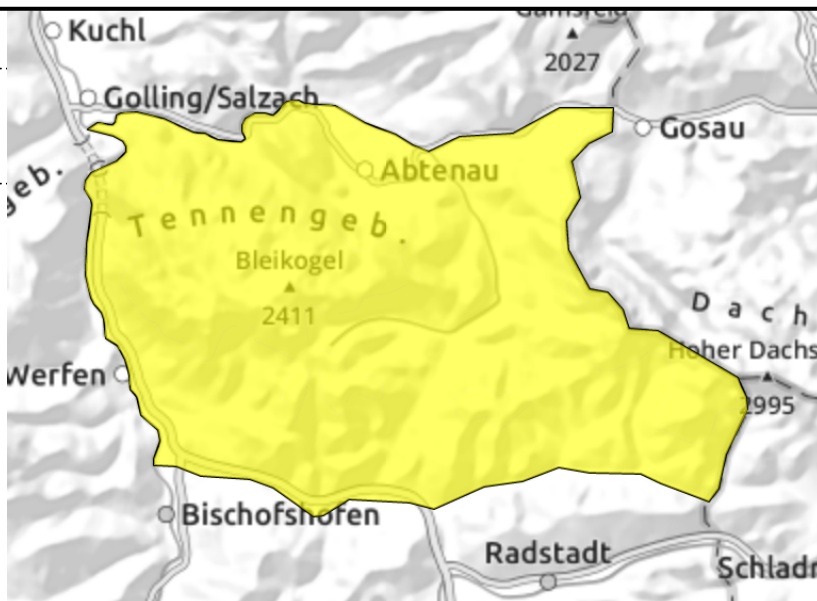


16.01.2021

Tennengebirge, Gosaukamm



In gullies, steep bowls, triggerable in transitions from shallow to deep snow



Still too little snow in Tennen Range and on Gosaukamm

Avalanche danger is MODERATE. A slab can release primarily in wind-loaded steep gullies, in transitions from shallow to deeper snow. In general the terrain is utterly windblown. Stones and branches are the risks.

Snowpack structure

Little snow. The NW winds have left many spots utterly bare of snow.

Weather

In the morning, severely limited visibility from fog, clouds and minor snowfall (5-10 cm). In the afternoon, visibility will improve somewhat. Brisk to strong-velocity cold NW winds. At 2000 m: -14 degrees.

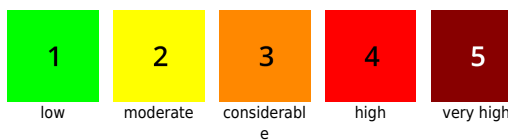
Outlook

On Sunday afternoon, rising avalanche danger as a result of fresh snow and wind.

Avalanche problems



Danger ratings

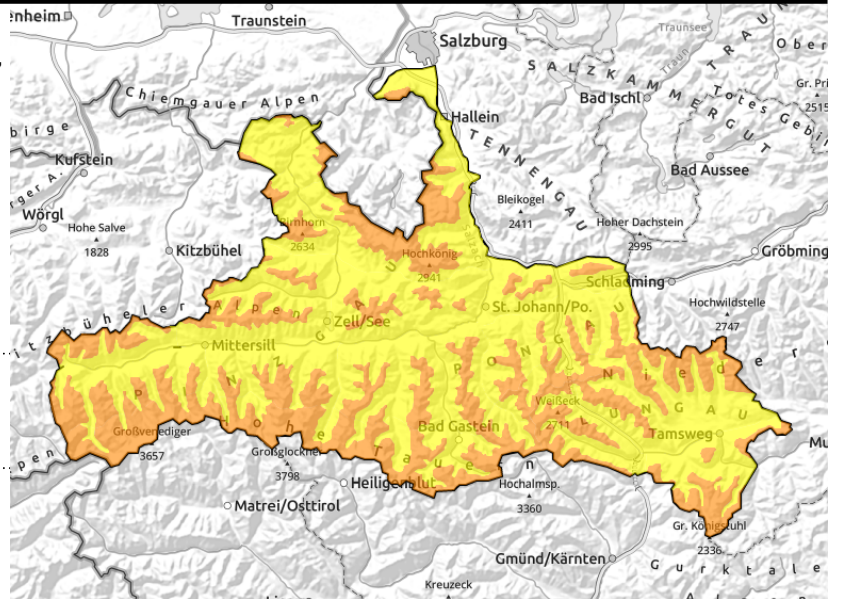


Expositions



16.01.2021

Untersbergstock, Steinernes Meer, Hochkönig, Hagengebirge, Göllstock, Chiemgauer Alpen, Heutal, Reiteralpe, Loferer und Leoganger Steinberge, Kitzbüheler Alpen, Glemmtal, Oberpinzgauer Grasberge, Dientner Grasberge, Goldberggruppe Alpenhauptkamm, Goldberggruppe Nord, Pongauer Grasberge, Niedere Tauern Nord, Niedere Tauern Alpenhauptkamm, Ankogelgruppe, Muhr, Niedere Tauern Süd, Nockberge, Glocknergruppe Nord, Glocknergruppe Alpenhauptkamm, Großvenedigergruppe Nord, Großvenedigergruppe Alpenhauptkamm



forestline



Near to and distant from ridgelines, behind protruberances, on unfavourable base

Easily triggered snowdrifts

Avalanche danger above the treeline is CONSIDERABLE. Small-to-medium (in isolated cases, large-sized) avalanches can be triggered even by minimum additional loading in steep terrain, as several avalanche releases involving persons showed on Friday. Most avalanche prone locations are found behind protruberances in N-E-S aspects, both near to and distant from ridgelines, and in gullies and bowls in all aspects above the forest edges. Backcountry skiing and freeriding tours demand experience in assessing avalanche risks on-site and a great deal of restraint.

Snowpack structure

Between Tuesday and Thursday there was 30-60 cm (in Glockner and Venediger Massifs up to 80 cm) of fresh snow registered accompanied by heavy wind impact. Windward slopes are utterly windblown, gullies and bowls filled to the brim with drifts. Bonding to the old snowpack is poor: faceted crystals (expansively metamorphosed plus surface hoar). Also at intermediate levels between the snowdrifts/fresh snow from the last three days, slabs can fracture, most easily in transitions from shallow to deeper snow. Near ridgelines, thin snowdrift patches will be generated on Saturday.

Weather

In the morning, visibility will be limited by clouds and fog and some minor snowfall (5 cm). In the afternoon, visibility will improve somewhat. An icy-cold, brisk-to-strong velocity NW wind will be blowing. At 2000m: -14 degrees; at 3000 m: -18 degrees.

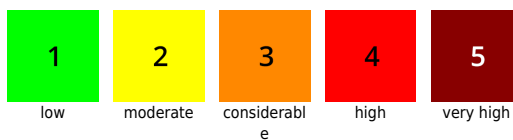
Outlook

On Sunday, CONSIDERABLE avalanche danger will continue as a result of fresh snowfall and wind.

Avalanche problems



Danger ratings



Expositions

