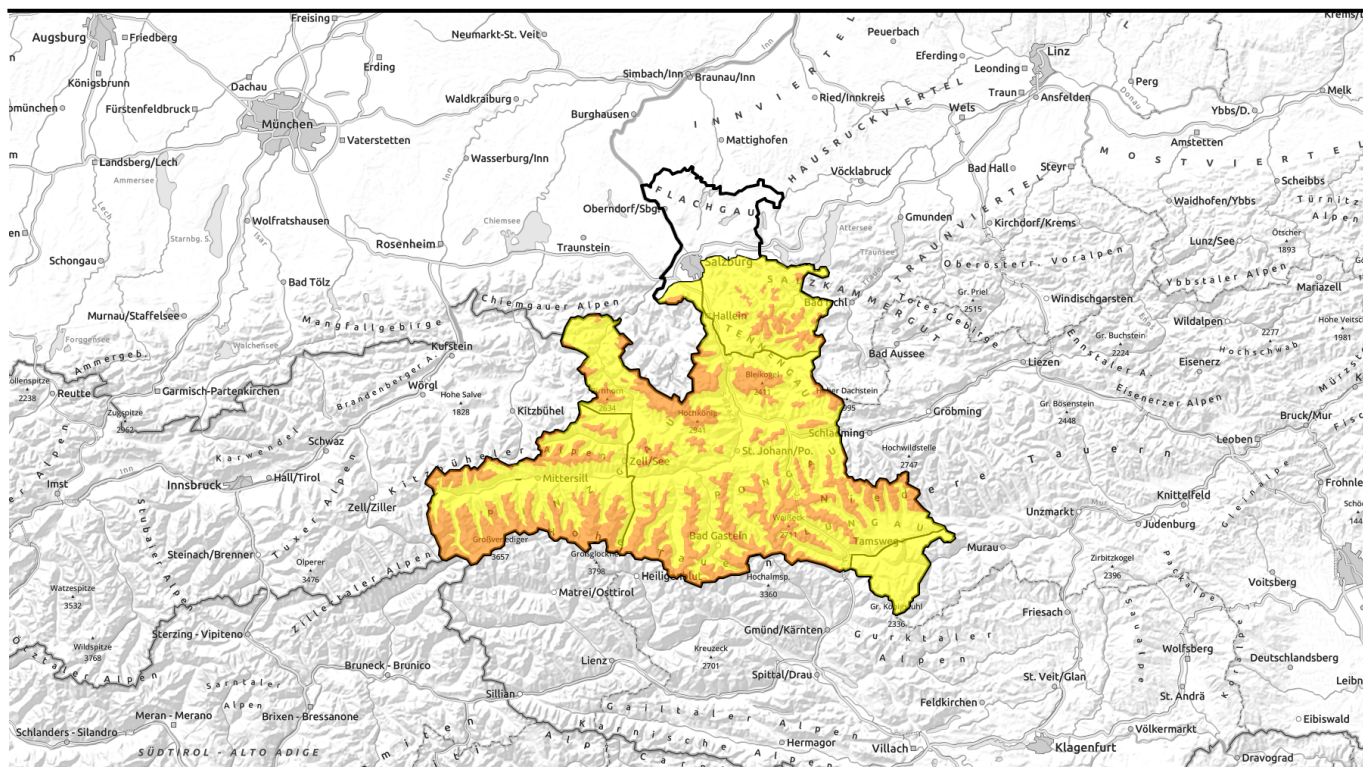


14.01.2021



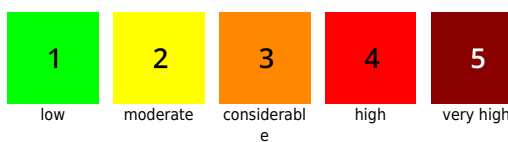
Heavy snowfall plus storm-strength winds

| | | | |
|--|-------------------|------------------------------------------------------------------------------------------------------------------------------------------------------------------------------------------------------------------------------------------------------------------------------------------------------------------------------------------------------------------------|--|
| | <p>forestline</p> | <p>Kitzbüheler Alpen, Glemmtal, Oberpinzgauer Grasberge, Glocknergruppe Nord, Großvenedigergruppe Nord, Großvenedigergruppe Alpenhauptkamm, Glocknergruppe Alpenhauptkamm</p> | |
| | <p>forestline</p> | <p>Loferer und Leoganger Steinberge, Chiemgauer Alpen, Heutal, Reiteralpe, Steinernes Meer, Hochkönig, Hagengebirge, Göllstock, Tennengebirge, Gosaukamm, Untersbergstock, Dientner Grasberge, Goldberggruppe Alpenhauptkamm, Goldberggruppe Nord, Niedere Tauern Nord, Pongauer Grasberge, Niedere Tauern Alpenhauptkamm, Ankogelgruppe, Muhr, Niedere Tauern Süd</p> | |
| | <p>forestline</p> | <p>Osterhorngruppe, Gamsfeldgruppe</p> | |
| | | <p>Nockberge</p> | |

Avalanche problems



Danger ratings



Expositions



14.01.2021

Kitzbüheler Alpen, Glemmtal, Oberpinzgauer Grasberge, Glocknergruppe Nord, Großvenedigergruppe Nord, Großvenedigergruppe Alpenhauptkamm, Glocknergruppe Alpenhauptkamm



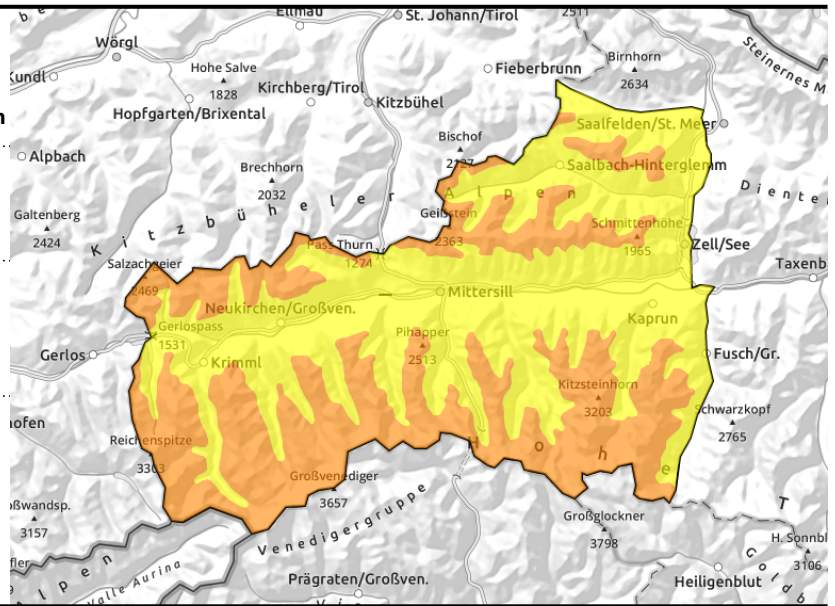
forestline



Lots of fresh snow, cold and loosely-packed, deposited on an unfavourable base



Near to and distant from ridgelines, behind protruberances, in gullies, steep bowls



Snowdrifts deposited on unfavourable base

CONSIDERABLE danger of slab avalanches above timberline. Avalanche prone locations from fresh drifts are both near to and distant from ridgelines, particularly on steep N-E-SW slopes, in steep gullies and bowls and in sparsely wooded zones. Triggering in many places is possible from minimum additional loading. Avalanches can grow to medium, in isolated cases also to large size and at high altitudes develop powder clouds. Backcountry skiing and freeriding tours demand experience in assessing avalanche risks as well as good knowledge of local terrain, since poor visibility makes recognizing the danger zones more difficult.

Snowpack structure

Between Tuesday and Thursday morning, 20-40 cm of fresh snow is expected widespread, in the Venediger Massif up to 60 cm of very cold, dry fresh snow. During the daytime an additional 10-20 cm of snowfall will be added to it. The fresh snow was and is still being transported by strong-to-storm-strength W/N winds into gullies, bowls and generally to east and south-facing slopes. Exposed zones are windblown and hard. Elsewhere the base for fresh snow and drifts is frequently cold, expansively metamorphosed powder, in wind-protected zones distant from ridgelines there is also surface hoar. The proneness to the bonded snow triggering atop this base is high. A further fracture zone is the faceted layer of crystals beneath the wind crusts and melt-freeze crusts.

Weather

Light conditions are often diffuse, or visibility limited by clouds, fog and snow flurries. The westerly winds at high altitudes and in the Tauern will reach 100 km/hr in the morning. In the Northern Alps, gusts reach 80 km/hr. In the afternoon the snowfall will slacken off, with extended dry phases. Visibility will improve only very gradually, and not much. Temperature at 2000 m: -13 degrees; at 3000 m, -20 degrees.

Outlook

Sunny with slightly higher temperatures and only light winds on Friday. Marked snowdrift problem with ongoing CONSIDERABLE danger of slab avalanches. Restraint and experiences in outlying terrain is absolutely imperative.

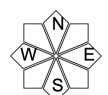
Avalanche problems



Danger ratings



Expositions

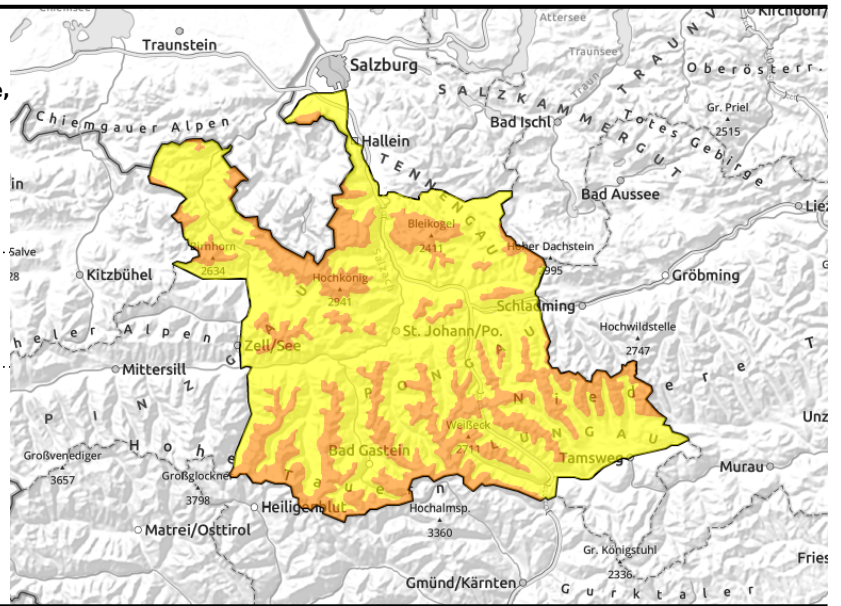


14.01.2021

Loferer und Leoganger Steinberge, Chiemgauer Alpen, Heutal, Reiteralpe, Steinernes Meer, Hochkönig, Hagengebirge, Göllstock, Tennengebirge, Gosaukamm, Untersbergstock, Dientner Grasberge, Goldberggruppe Alpenhauptkamm, Goldberggruppe Nord, Niedere Tauern Nord, Pongauer Grasberge, Niedere Tauern Alpenhauptkamm, Ankogelgruppe, Muhr, Niedere Tauern Süd



Near to and distant from ridgelines, behind protruberances, in gullies, steep bowls, above sparsely wooded zones



Trigger-sensitive snowdrifts

CONSIDERABLE danger of slab avalanches above timberline. Avalanche prone locations from fresh drifts are both near to and distant from ridgelines, particularly on steep N-E-SW slopes, in steep gullies and bowls and in sparsely wooded zones. Triggering in many places is possible from minimum additional loading. Avalanches can grow to medium, in isolated cases also to large size and at high altitudes develop powder clouds. Backcountry skiing and freeriding tours demand experience in assessing avalanche risks as well as good knowledge of local terrain, since poor visibility makes recognizing the danger zones more difficult.

Snowpack structure

Between Tuesday and Thursday morning, 20-40 cm of fresh snow are expected widespread, in the Venediger Massif up to 60 cm of very cold, dry fresh snow. During the daytime an additional 10-20 cm of snowfall will be added to it. The fresh snow was and is still being transported by strong-to-storm-strength W/N winds into gullies, bowls and generally to east and south-facing slopes. Exposed zones are windblown and hard. Elsewhere the base for fresh snow and drifts is frequently cold, expansively metamorphosed powder, in wind-protected zones distant from ridgelines there is also surface hoar. The proneness to the bonded snow triggering atop this base is high. A further fracture zone is the faceted layer of crystals beneath the wind crusts and melt-freeze crusts.

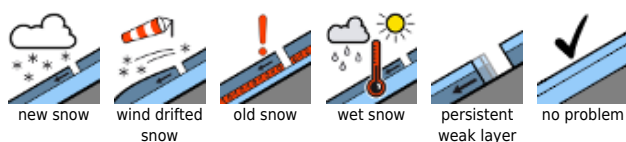
Weather

Light conditions are often diffuse, or visibility limited by clouds, fog and snow flurries. The westerly winds at high altitudes and in the Tauern will reach 100 km/hr in the morning. In the Northern Alps, gusts reach 80 km/hr. In the afternoon the snowfall will slacken off, with extended dry phases. Visibility will improve only very gradually, and not much. Temperature at 2000 m: -13 degrees; at 3000 m, -20 degrees.

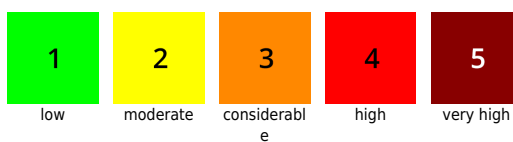
Outlook

Sunny with slightly higher temperatures and only light winds on Friday. Marked snowdrift problem with ongoing CONSIDERABLE danger of slab avalanches. Restraint and experiences in outlying terrain is absolutely imperative.

Avalanche problems



Danger ratings



Expositions

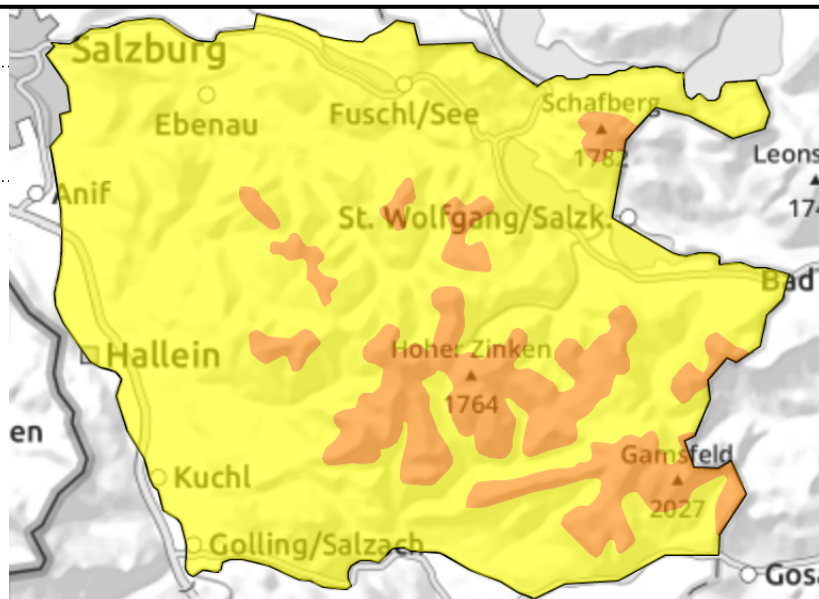


14.01.2021

Osterhorngruppe, Gamsfeldgruppe



Near to and distant from ridgelines, behind protruberances, in gullies, steep bowls, above sparsely wooded zones



Treacherous snowdrifts demand experience

CONSIDERABLE danger of slab avalanches above timberline. Avalanche prone locations from fresh drifts are both near to and distant from ridgelines, particularly on steep N-E-S slopes, in steep gullies and bowls and in sparsely wooded zones. Triggering in many places is possible from minimum additional loading. Avalanches can grow to medium, in isolated cases also to large size and at high altitudes develop powder clouds. Backcountry skiing and freeriding tours demand experience in assessing avalanche risks as well as good knowledge of local terrain, since poor visibility makes recognizing the danger zones more difficult.

Snowpack structure

Between Tuesday and Thursday morning, 15-40 cm of fresh snow are expected widespread. During the daytime a few more centimetres will be added to it. The fresh snow was and is still being transported by strong-to-storm-strength W/NW winds into gullies, bowls and generally to east and south-facing slopes. Exposed zones are windblown and hard. Elsewhere the base for fresh snow and drifts is frequently cold, expansively metamorphosed powder, in wind-protected zones distant from ridgelines there is also surface hoar. The proneness to the bonded snow triggering atop this base is high.

Weather

Light conditions are often diffuse, or visibility limited by clouds, fog and snow flurries. The westerly winds at 40-60 km/hr in open ridgeline and summit zones. In the afternoon the snowfall will slacken off, with extended dry phases. Visibility will improve only very gradually, and not much. Temperature at 1500 m: -9 degrees.

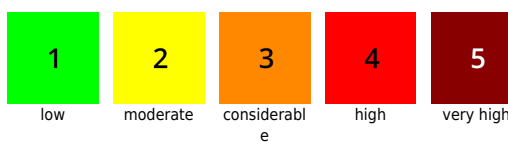
Outlook

Sunny with slightly higher temperatures and only light winds on Friday. Marked snowdrift problem. Restraint and experiences in outlying terrain is absolutely imperative.

Avalanche problems



Danger ratings



Expositions

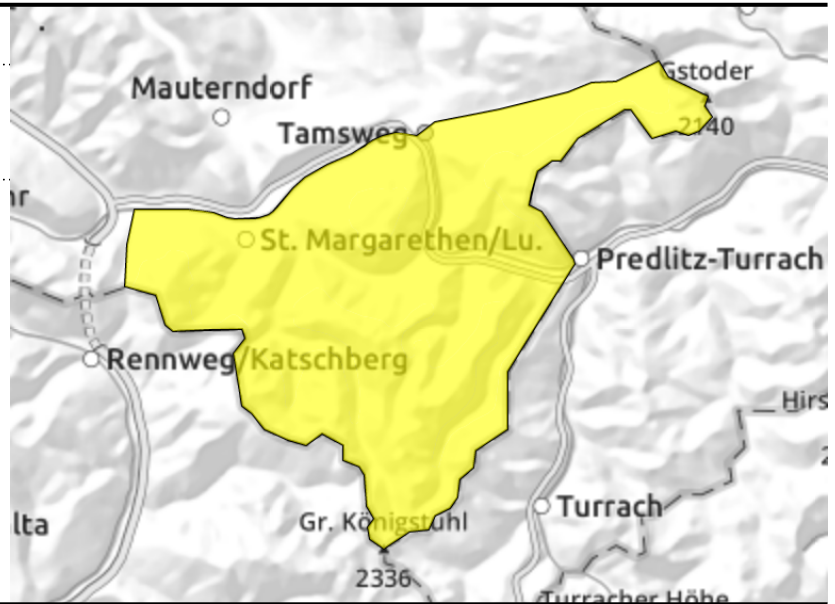


14.01.2021

Nockberge



Near to and distant from ridgelines, behind protruberances, atop unfavourable base, exposed terrain is windblown



NW winds are transporting fresh and old snow

MODERATE avalanche danger prevails. Avalanche prone locations from fresh snowdrifts are found both near to and distant from ridgelines, particularly on steep NW-E-SW slopes, in steep gullies and bowls. Triggering an avalanche is possible even by minimum additional loading, i.e. from the weight of one sole person, also on ascents. Avalanches can grow to medium, in isolated cases also to large size.

Snowpack structure

Fresh snow (5-10 cm) which together with the cold old snow is being transported by strong-to-storm winds, deposited in gullies, bowls and in general on east and south-facing slopes. The base for fresh snow and drifts is cold, expansively metamorphosed (faceted) powder, in zones distant from ridgelines also surface hoar. The proneness to triggering the bonded snow atop this base is high. Further fractures could occur in the faceted crystals beneath the (now partially covered) wind crusts and melt-freeze crusts. Widespread older snowdrift accumulations occur also on north-facing slopes.

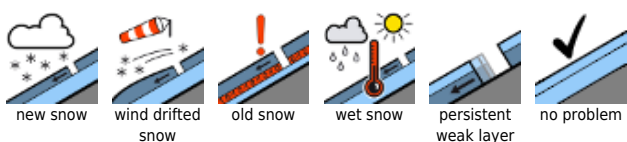
Weather

Light conditions are often diffuse, or visibility limited by clouds, fog and snow flurries. The northwesterly winds at high altitudes and in the Tauern will be blowing at 50-70 km/hr. In the afternoon the snowfall will slacken off, with extended dry phases. Visibility will improve only very gradually, and not much. Temperature at 2000 m: -13 degrees; at 3000 m, -20 degrees.

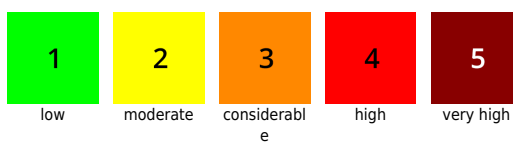
Outlook

Sunny with slightly higher temperatures and only light winds on Friday. Marked snowdrift problem with ongoing CONSIDERABLE danger of slab avalanches. Restraint and experiences in outlying terrain is absolutely imperative.

Avalanche problems



Danger ratings



Expositions

