

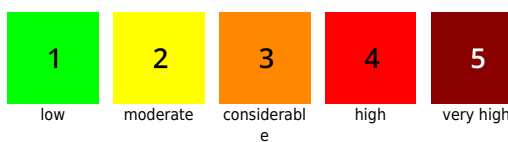
Fresh snow + storm winds elevating avalanche danger to **CONSIDERABLE**

		<p>Chiemgauer Alpen, Heutal, Reiteralpe, Untersbergstock, Osterhorngruppe, Gamsfeldgruppe</p>		
	<p>1800 m</p>	<p>Loferer und Leoganger Steinberge, Hochkönig, Hagengebirge, Göllstock, Tennengebirge, Gosaukamm</p>		
	<p>forestline</p>	<p>Kitzbüheler Alpen, Glemmtal, Dientner Grasberge, Pongauer Grasberge, Goldberggruppe Nord, Niedere Tauern Nord</p>		
	<p>2000 m</p>	<p>Oberpinzgauer Grasberge, Großvenedigergruppe Nord, Großvenedigergruppe</p>		
	<p>forestline</p>	<p>Alpenhauptkamm, Glocknergruppe Nord, Glocknergruppe Alpenhauptkamm, Goldberggruppe Alpenhauptkamm</p>		
	<p>forestline</p>	<p>Niedere Tauern Alpenhauptkamm, Niedere Tauern Süd, Ankogelgruppe, Muhr, Nockberge</p>		

Avalanche problems



Danger ratings



Expositions

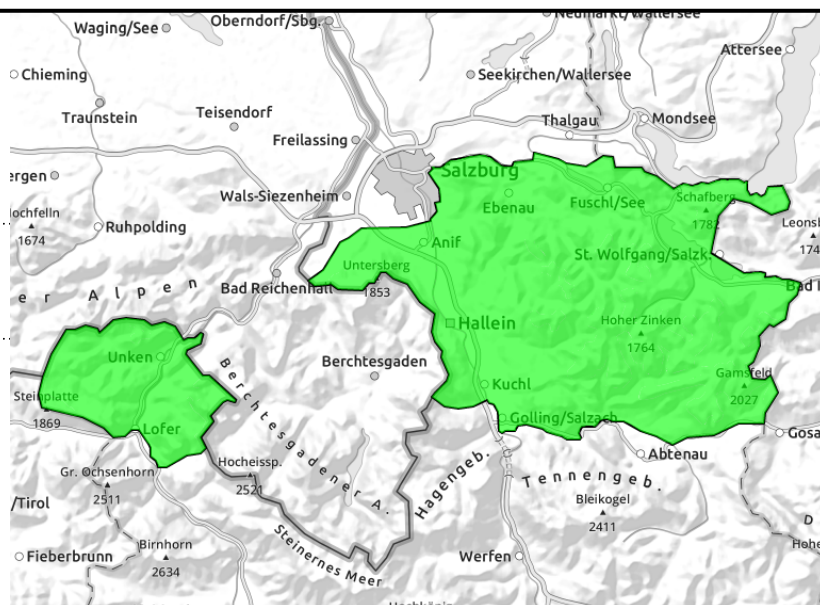


Region report

Chiemgauer Alpen, Heutal, Reiteralpe, Untersbergstock, Osterhorngruppe, Gamsfeldgruppe



Very few danger spots in outlying terrain



Snow is falling mostly on bare ground

Low avalanche danger. Too little snow.

Snowpack structure

Snow is falling mostly on bare ground, or on top of old snow above 1500 m on north-facing slopes, on south-facing slopes above 1800 m.

Weather

Poor visibility due to clouds, fog, snowfall. Fresh snow expected: 15 cm. Very windy: strong northerly winds. At 1500 m, -5 degrees.

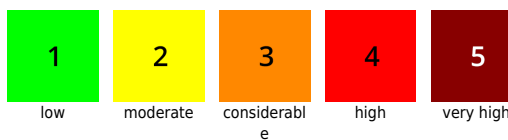
Outlook

Little change.

Avalanche problems



Danger ratings



Expositions

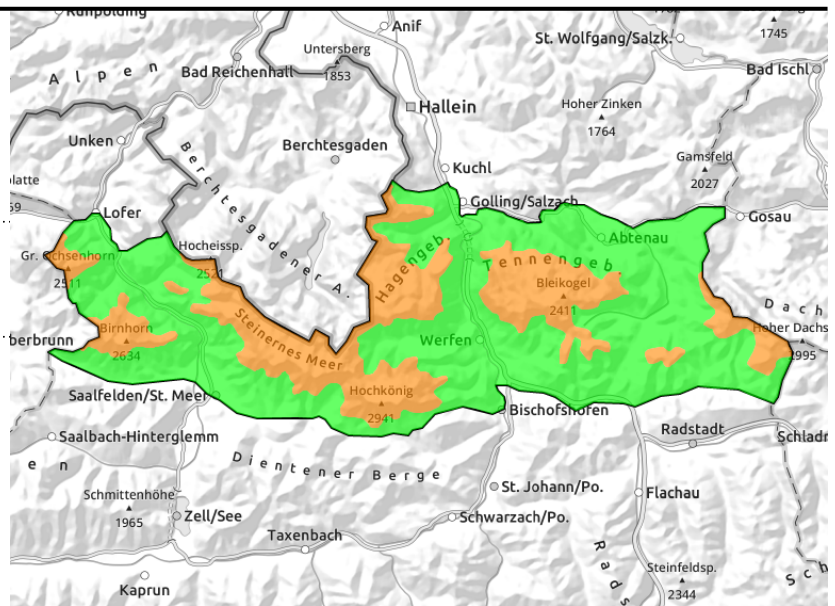


Region report

Loferer und Leoganger Steinberge, Hochkönig, Hagengebirge, Göllstock, Tennengebirge, Gosaukamm



Triggerings near to and distant from ridges, behind protruberances, over 1800 m



Fresh snowdrifts

Avalanche danger above 1800 m is CONSIDERABLE, below that altitude LOW. Fresh snow and storm winds are generating fresh drifts, triggerable even with minimum additional loading. Avalanche prone locations occur both near to and distant from ridgelines, behind protruberances in the landscape, in gullies and bowls, most in NW-E-S aspects. Frequency of danger zones and size of avalanches increase with ascending altitude.

Snowpack structure

Fresh snow (15-30 cm) and strong-to-storm strength NW winds are generating new drifts, depositing them on the fresh snow and drifts from Thursday (a potential weak layer). Beneath that, starting at 1500 m on north-facing slopes and at 1800 m in other aspects, is a melt-freeze crust; above 2400 m on shady slopes there is also loosely-packed, expansively metamorphosed snow (another potential weak layer).

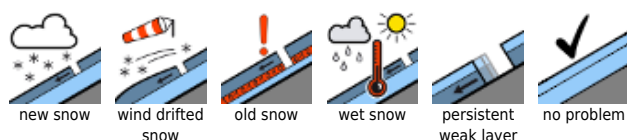
Weather

Fog, clouds, snowfall are limiting visibility severely. Fresh snow expected: 15-30 cm. Strong-to-stormy NW winds (up to 60 km/hr). At 2000 m, -9 degrees.

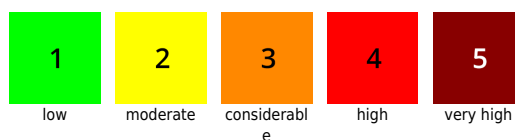
Outlook

Little change.

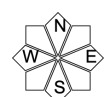
Avalanche problems



Danger ratings



Expositions

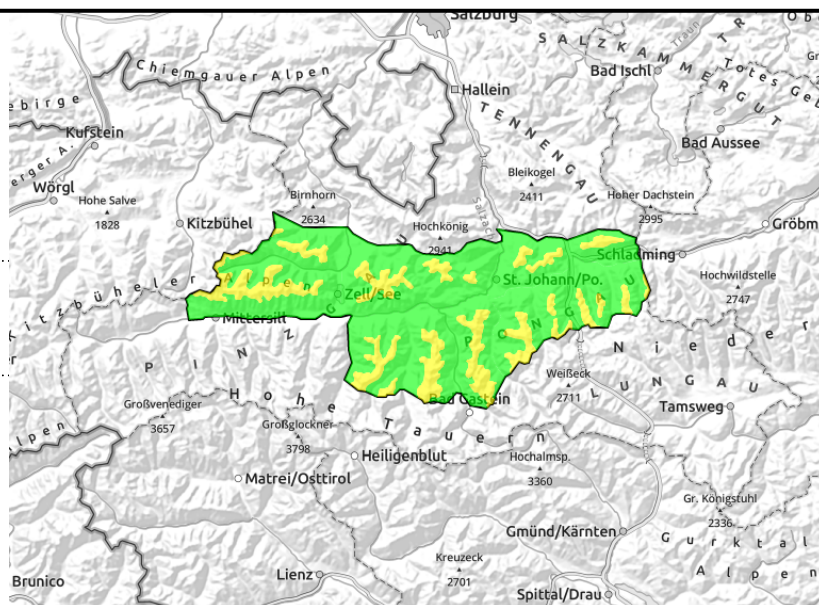


Region report

**Kitzbüheler Alpen, Glemmtal,
Dientner Grasberge, Pongauer
Grasberge, Goldberggruppe Nord,
Niedere Tauern Nord**



Triggerable near ridgelines,
thin, small snowdrift
accumulations



Fresh snowdrifts near ridgelines

Avalanche danger above the timberline is MODERATE, below that altitude LOW. Fresh snow plus brisk W/NW winds are forming fresh, thin snowdrift accumulations near ridgelines, often triggerable even by minimum additional loading as a small-sized slab avalanche, e.g. in steep east-facing gullies. Frequency of danger zones increases with ascending altitude.

Snowpack structure

Atop a melt-freeze crust there is a few centimetres of fresh snow from Thursday, beneath that is a shallow, quite compact old snowpack. On top of this, the fresh snow and drifts will be deposited on Friday.

Weather

Visibility severely hampered by fog, clouds, snowfall. Plus: brisk W/NW winds at summits and ridges. At 2000 m: -9 degrees.

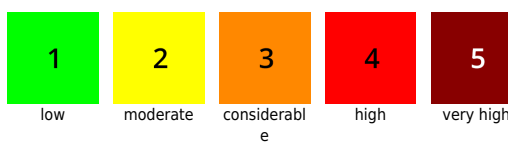
Outlook

Little change.

Avalanche problems



Danger ratings



Expositions

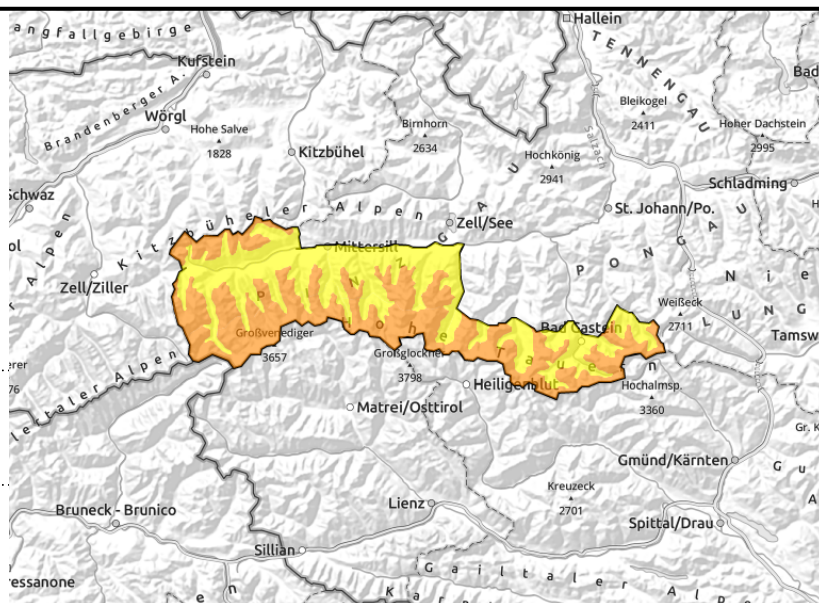


Region report

**Oberpinzgauer Grasberge,
Großvenedigergruppe Nord,
Großvenedigergruppe
Alpenhauptkamm, Glocknergruppe
Nord, Glocknergruppe
Alpenhauptkamm, Goldberggruppe
Alpenhauptkamm**



Near to and distant from
ridgelines, behind abrupt
changes in the terrain



Freshly generated snowdrifts

Avalanche danger above 2000 m is **CONSIDERABLE**, below that altitude **LOW**. Fresh snow and storm winds are generating new snowdrifts, triggerable even by minimum additional loading. Avalanche prone locations occur both near to and distant from ridgelines, behind protruberances in the landscape, in gullies and bowls, mostly in NW-E-S aspects. Frequency of danger zones and size of avalanches both increase with ascending altitude.

Snowpack structure

Fresh snow (20-40 cm) plus strong to stormy NW winds will generate fresh drifts which will be deposited on top of the small amount of fresh snow and drifts from Thursday (a potential weak layer). Beneath that is usually a melt-freeze crust, above 2300 m on shady slopes there is loosely-packed, expansively metamorphosed snow (another potential weak layer).

Weather

Fog, clouds, snowfall severely limit visibility. Expected amount of fresh snow: 20-40 cm. Plus strong-to-storm strength NW winds (up to 80 km/hr on the Main Alpine Ridge). At 2000 m, -8 degrees; at 3000 m, -15 degrees.

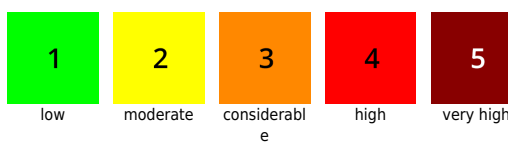
Outlook

Little change.

Avalanche problems



Danger ratings



Expositions

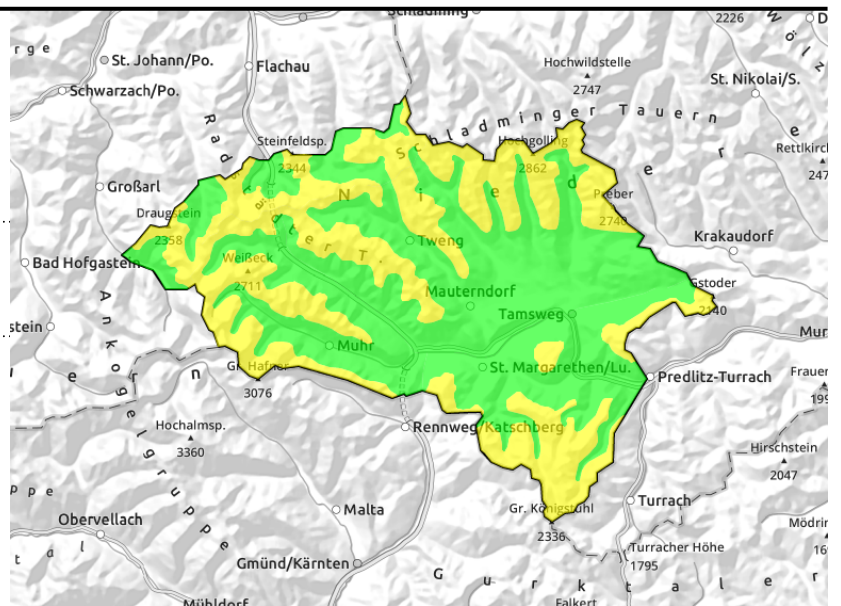


Region report

**Niedere Tauern Alpenhauptkamm,
Niedere Tauern Süd, Ankogelgruppe,
Muhr, Nockberge**



Near to and distant from ridgelines, behind protruberances in the landscape, small-sized snowdrift accumulations



Fresh snowdrifts, near to and distant from ridgelines

Avalanche danger above the timberline is MODERATE, below that altitude LOW. Fresh snow and strong-to-storm strength NW winds are generating fresh, thin snowdrift accumulations both near to and distant from ridgelines. They can be triggered as a small slab avalanches even by minimum additional loading in places. Frequency of avalanche prone locations increases with ascending altitude.

Snowpack structure

On top of a melt-freeze crust there is a small amount of fresh snow from Thursday, beneath that is a compact old snowpack. On shady slopes, expansively metamorphosed snow in places, with surface hoar. On top of this snowpack the fresh snow and drifts will be deposited on Friday.

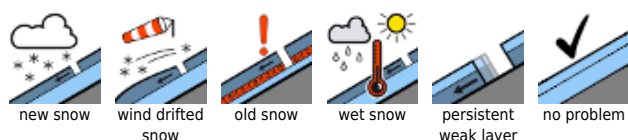
Weather

Visibility severely limited by fog, clouds, snowfall. Fresh snow expected: between 15 cm on the Tauern and 5 cm on the Katschberg. In addition, strong to storm strength NW winds and/or a northerly foehn wind will be blowing. At 1500 m, -5 degrees; at 2000 m, -8 degrees.

Outlook

Little change.

Avalanche problems



Danger ratings



Expositions

