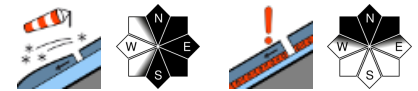


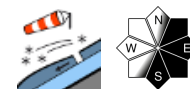
## Deutlich gestiegene Lawinengefahr - frischer sehr störanfälliger Triebschnee durch Neuschnee und Wind!



Dachstein, Gosaukamm, Kalmberg, Katergebirge, Totes Gebirge, Zimnitzmassiv, Höllengebirge, Traunstein, Eibenberg, Kasbergblock, Pyhrgas, Haller Mauer, Sengsengebirge, Reichraminger HG



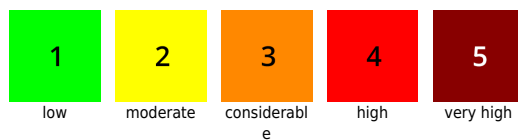
Ennstaler Voralpen



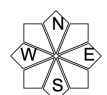
### Avalanche problems



### Danger ratings

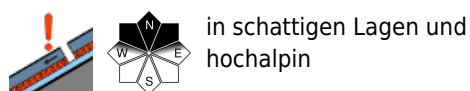
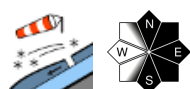
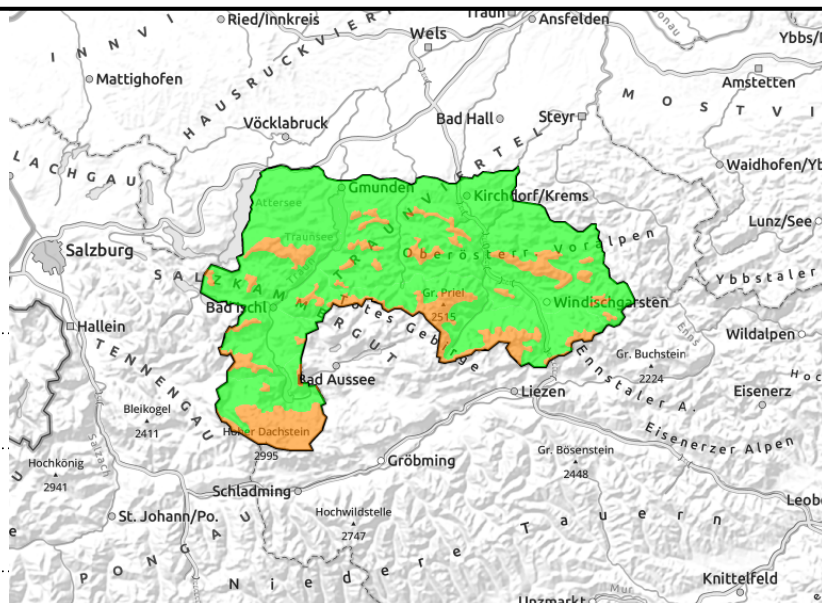


### Expositions



## Region report

**Dachstein, Gosaukamm, Kalmberg, Katergebirge, Totes Gebirge, Zimnitzmassiv, Höllengebirge, Traunstein, Eibenberg, Kasbergblock, Pyhrngas, Haller Mauer, Sengengebirge, Reichraminger HG**

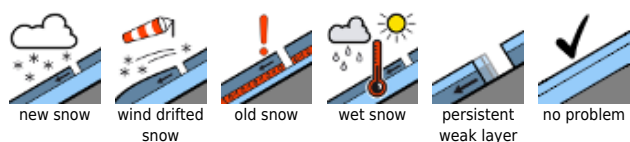


## Snowpack structure

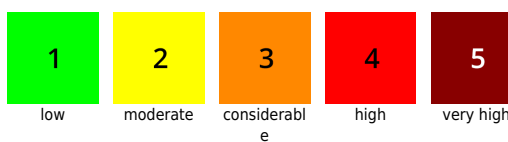
## Weather

## Outlook

### Avalanche problems



### Danger ratings



### Expositions

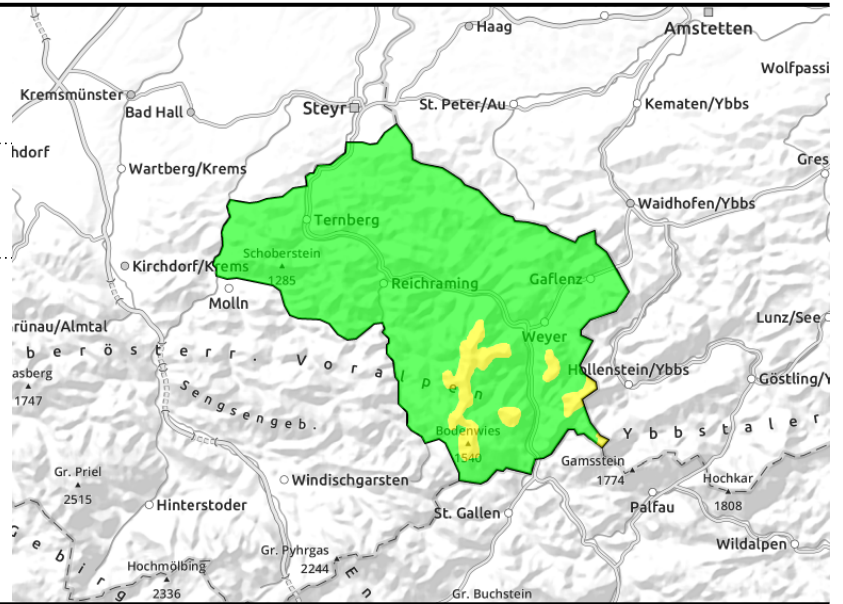


## Region report

### Ennstaler Voralpen



dünn und kleinräumiger  
Triebschnee



## Snowpack structure

## Weather

## Outlook

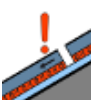
### Avalanche problems



new snow



wind drifted  
snow



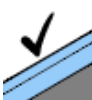
old snow



wet snow



persistent  
weak layer



no problem

### Danger ratings



1

low



2

moderate



3

considerabl  
e



4

high



5

very high

### Expositions

