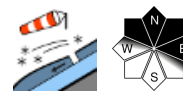


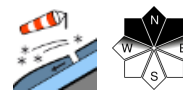
Nur lokale Gefahrenstellen in den Hochlagen durch Tribschnee - allgemein wenig Schnee!



Dachstein, Gosaukamm, Totes Gebirge, Pyhrngas, Haller Mauer



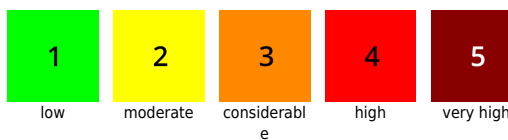
Kalmberg, Katergebirge, Zimnitzmassiv, Höllengebirge, Traunstein, Eibenberg, Kasbergblock, Sengsengebirge, Reichraminger HG, Ennstaler Voralpen



Avalanche problems



Danger ratings

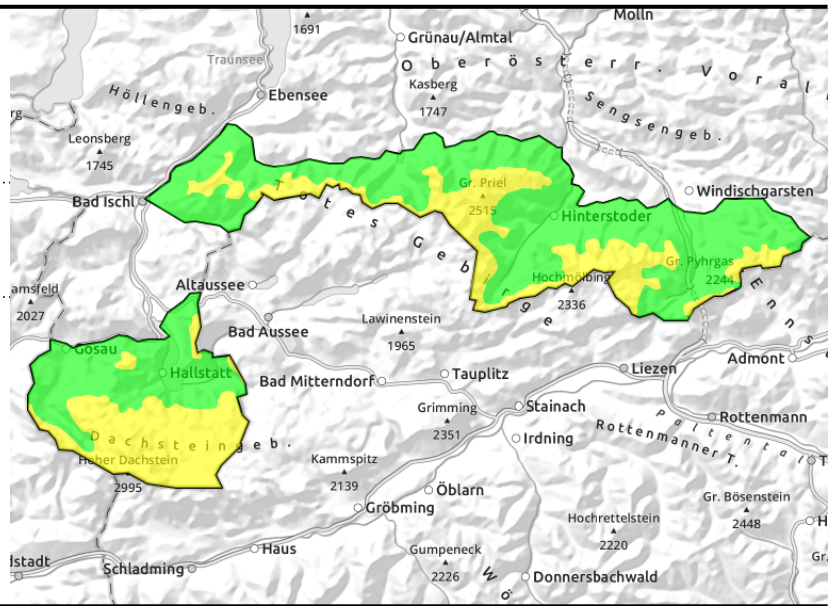
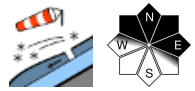


Expositions



Region report

Dachstein, Gosaukamm, Totes Gebirge, Pyhrgas, Haller Mauer

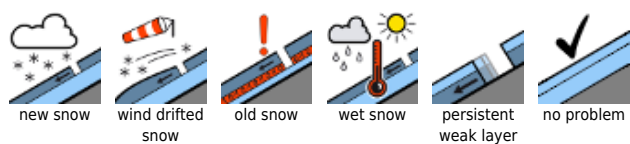


Snowpack structure

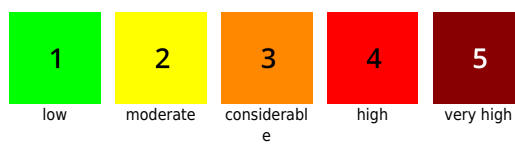
Weather

Outlook

Avalanche problems



Danger ratings

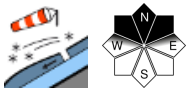
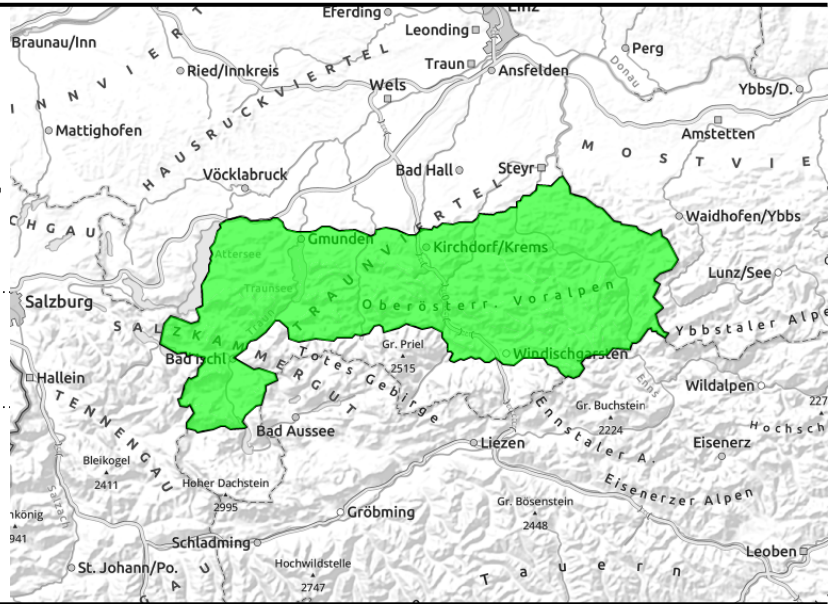


Expositions



Region report

Kalmberg, Katergebirge, Zimnitzmassiv, Höllengebirge, Traunstein, Eibenberg, Kasbergblock, Sengengebirge, Reichraminger HG, Ennstaler Voralpen



Snowpack structure

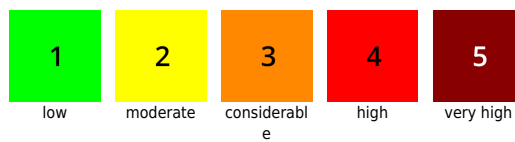
Weather

Outlook

Avalanche problems



Danger ratings



Expositions

