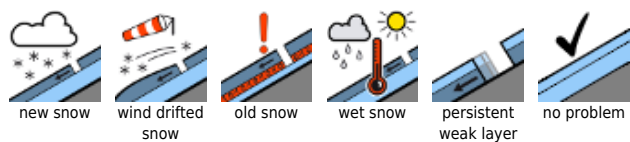


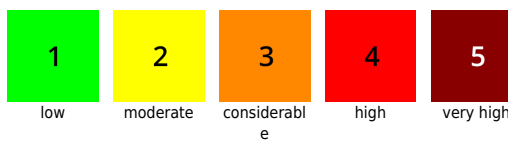
Wenig Schnee - nur hochgelegen ist lokal Triebschnee zu beachten!

	<p>2000 m</p>	<p>Dachstein, Gosaukamm, Totes Gebirge, Pyhr gas, Haller Mauer</p>		
	<p>1800 m</p>	<p>Kalmberg, Katergebirge, Zimnitzmassiv, Höllengebirge, Traunstein, Eibenberg, Kasbergblock, Sengengebirge, Reichraminger HG</p>		
		<p>Ennstaler Voralpen</p>		

Avalanche problems



Danger ratings

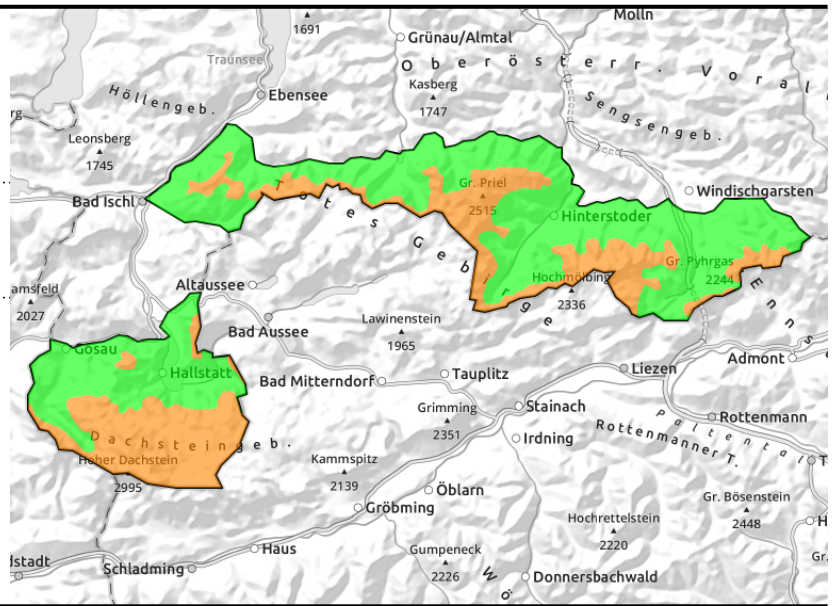
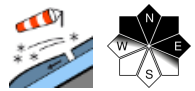
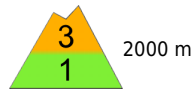


Expositions



Region report

Dachstein, Gosaukamm, Totes Gebirge, Pyhrgas, Haller Mauer

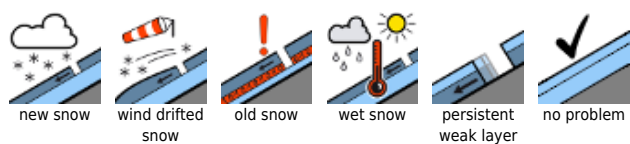


Snowpack structure

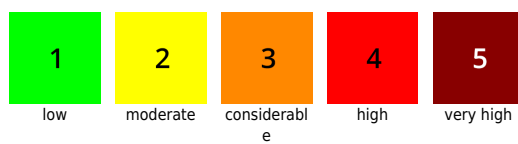
Weather

Outlook

Avalanche problems



Danger ratings

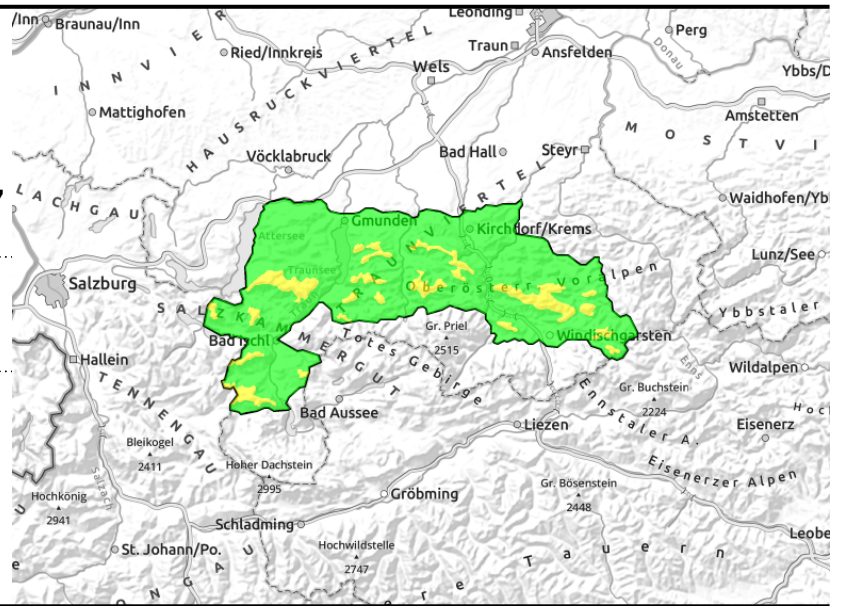
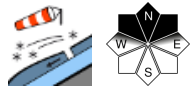
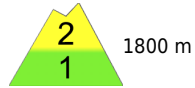


Expositions



Region report

**Kalmberg, Katergebirge,
Zimnitzmassiv, Höllengebirge,
Traunstein, Eibenberg, Kasbergblock,
Sengsengebirge, Reichraminger HG**

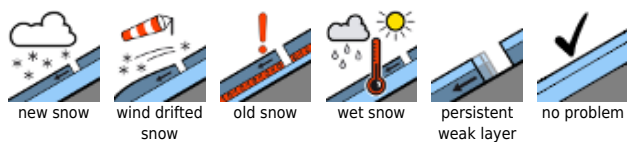


Snowpack structure

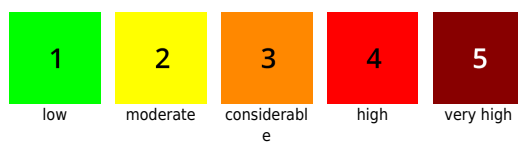
Weather

Outlook

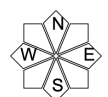
Avalanche problems



Danger ratings

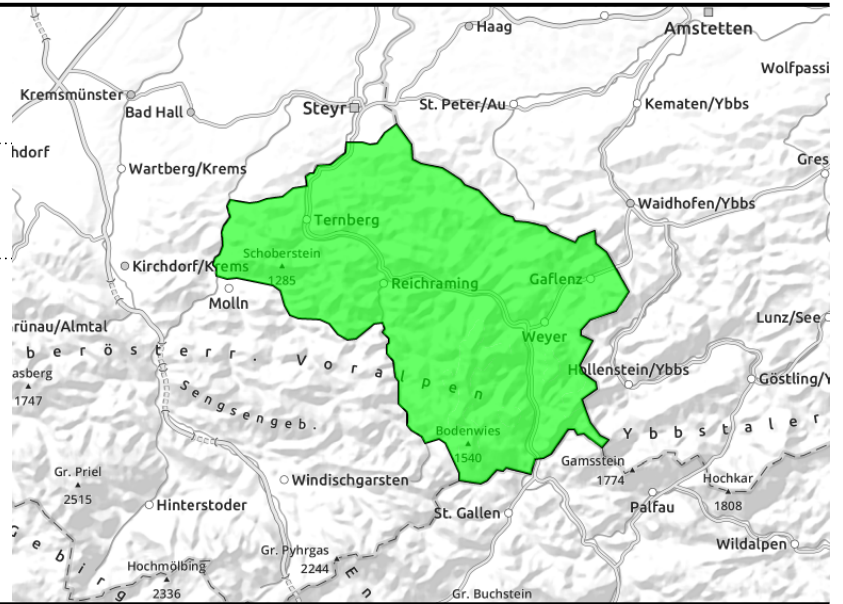
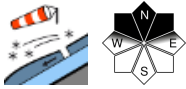


Expositions



Region report

Ennstaler Voralpen



Snowpack structure

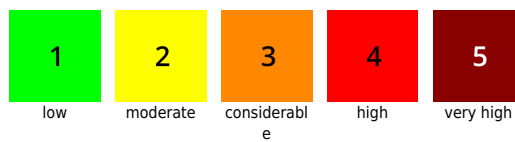
Weather

Outlook

Avalanche problems



Danger ratings



Expositions

