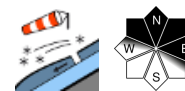


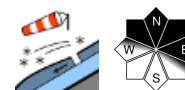
Stürmischer Südföhn bildet frischen labilen Triebschnee - teils erhebliche Schneebrettgefahr!



Dachstein, Gosaukamm, Kalmberg,
 Katergebirge, Totes Gebirge,
 Pyrgas, Haller Mauer



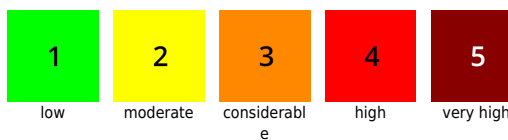
Zimnitzmassiv, Höllengebirge,
 Traunstein, Eibenberg, Kasbergblock,
 Sengsengebirge, Reichraminger HG,
 Ennstaler Voralpen



Avalanche problems



Danger ratings



Expositions

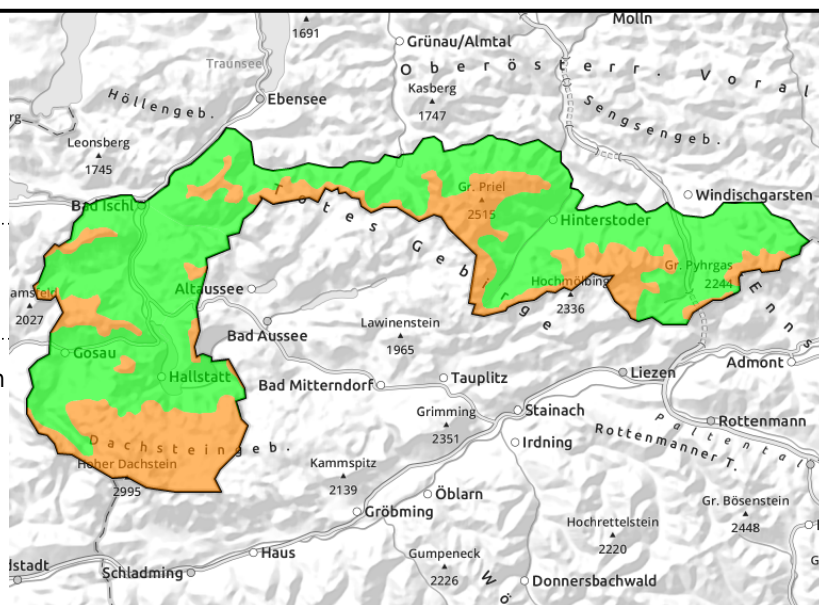


Region report

**Dachstein, Gosaukamm, Kalmberg,
 Katergebirge, Totes Gebirge,
 Pyhrgas, Haller Mauer**



kammnah, in Föhnschneisen, in
 Rinnen und steile Mulden



Snowpack structure

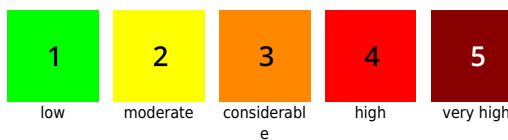
Weather

Outlook

Avalanche problems



Danger ratings

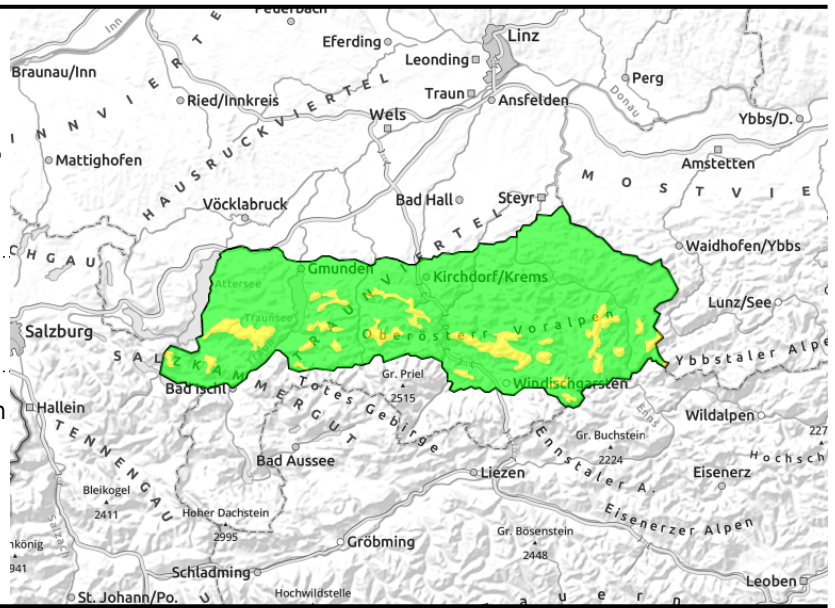
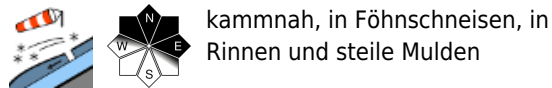


Expositions



Region report

**Zimnitzmassiv, Höllengebirge,
 Traunstein, Eibenberg, Kasbergblock,
 Sengsengebirge, Reichraminger HG,
 Ennstaler Voralpen**

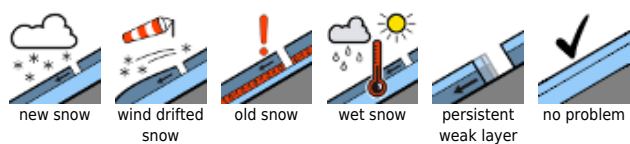


Snowpack structure

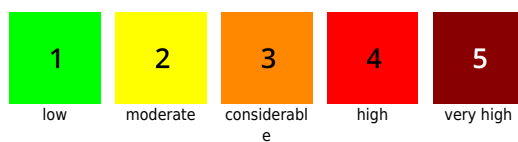
Weather

Outlook

Avalanche problems



Danger ratings



Expositions

