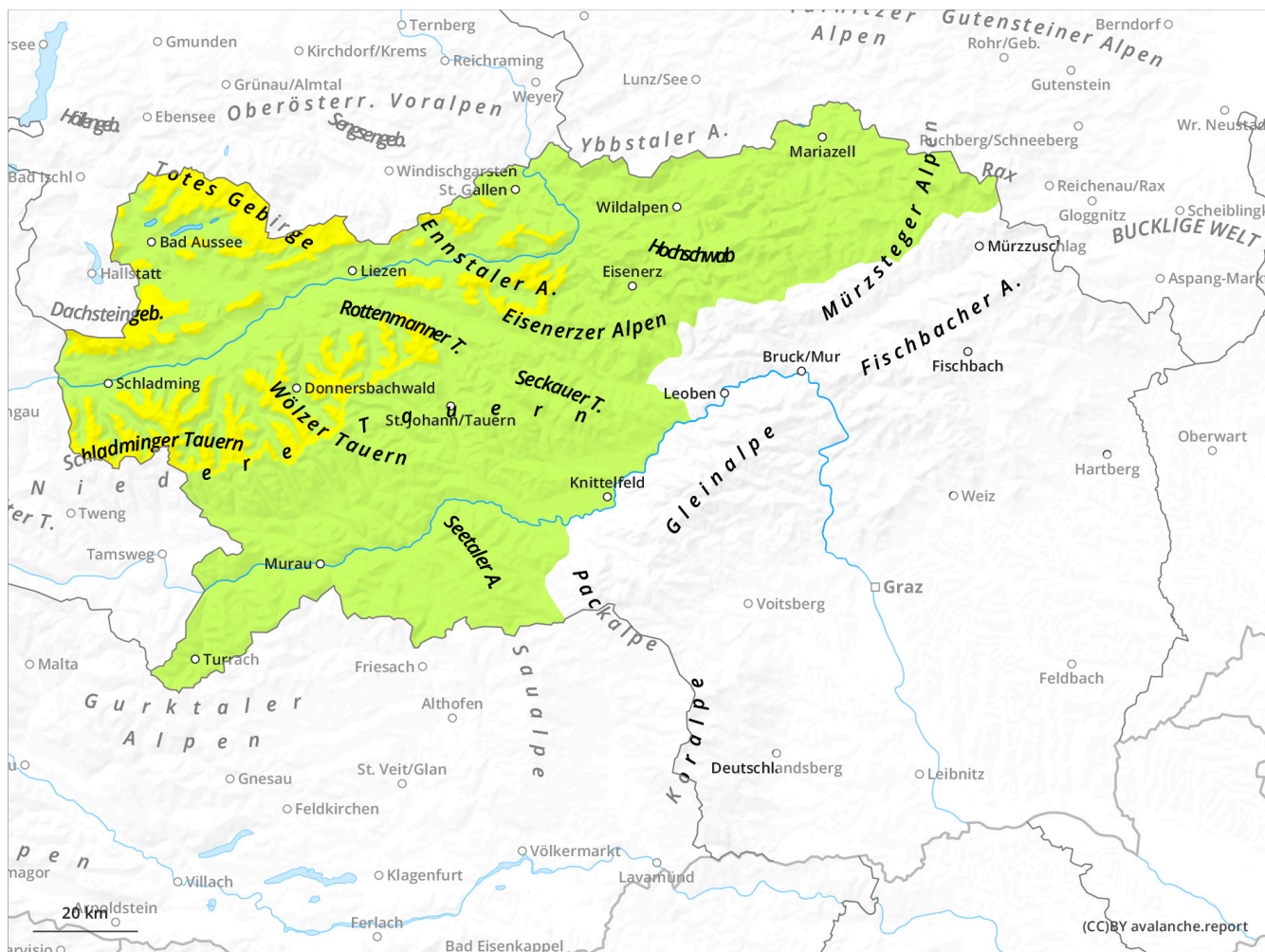
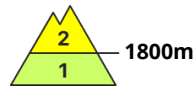
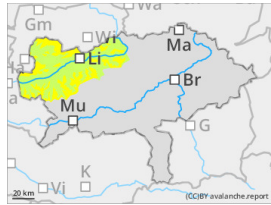


New snow in high altitudes! Poor visibility!



Danger Level 2 - Moderate



Tendency: Constant avalanche danger →
on Monday 23 December 2024



Wind slab



Fresh snowdrift!

Danger assessment

Moderate avalanche danger above 1.800 m. Wind slab problem! The new snow and the snowdrift covers danger spots. The danger spots are located in the sectors north to southeast. In the beginning of gullies and bowls an individual person can trigger a slab avalanche which can have a size of 1 to 2.

Snowpack

Till Sunday evening around 20 cm new snow is expected. The new snow and the snowdrift covers a soft layer from Friday above the tree line. Potential weak layers are found within the driftsnow layer and at the transition to the old snow cover.

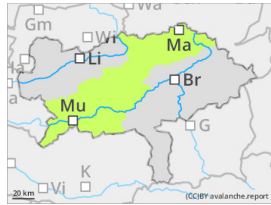
Weather

A coldfront from northwest brings clouds which cause poor visibility and snow. In the morning it can rain below 1.200 m. During the course of the day the snow line sinks to the valleys. In the afternoon and evening snow is also in the south possible. Increasingly strong westerly winds. Temperatures at noon are around -3 degrees in 2.000 m.

Tendency

Slab avalanche danger in high altitudes doesn't change.

Danger Level 1 - Low



Tendency: Constant avalanche danger →
on Monday 23 December 2024



Wind slab



New snow and snowdrift in high altitudes!

Danger assessment

Low avalanche danger. A little more danger spots formed due to snowdrift. These are located in gullies and bowls above 1.800 m mainly in the sector east. Slab avalanches can be triggered by high additional loads.

Snowpack

In the southern mountains and in northeast Styria the snow base is still thin. The new snow landed on surface hoar - on the sunny side on grass. The snow base is thin and shows no significant weak layers. Blown off areas are hard and icy.

Weather

A coldfront from northwest brings clouds which cause poor visibility and snow. In the morning it can rain below 1.200 m. During the course of the day the snow line sinks to the valleys. In the afternoon and evening snow is also in the south possible. Increasingly strong westerly winds. Temperatures at noon are around -3 degrees in 2.000 m.

Tendency

No significant change of the avalanche danger.