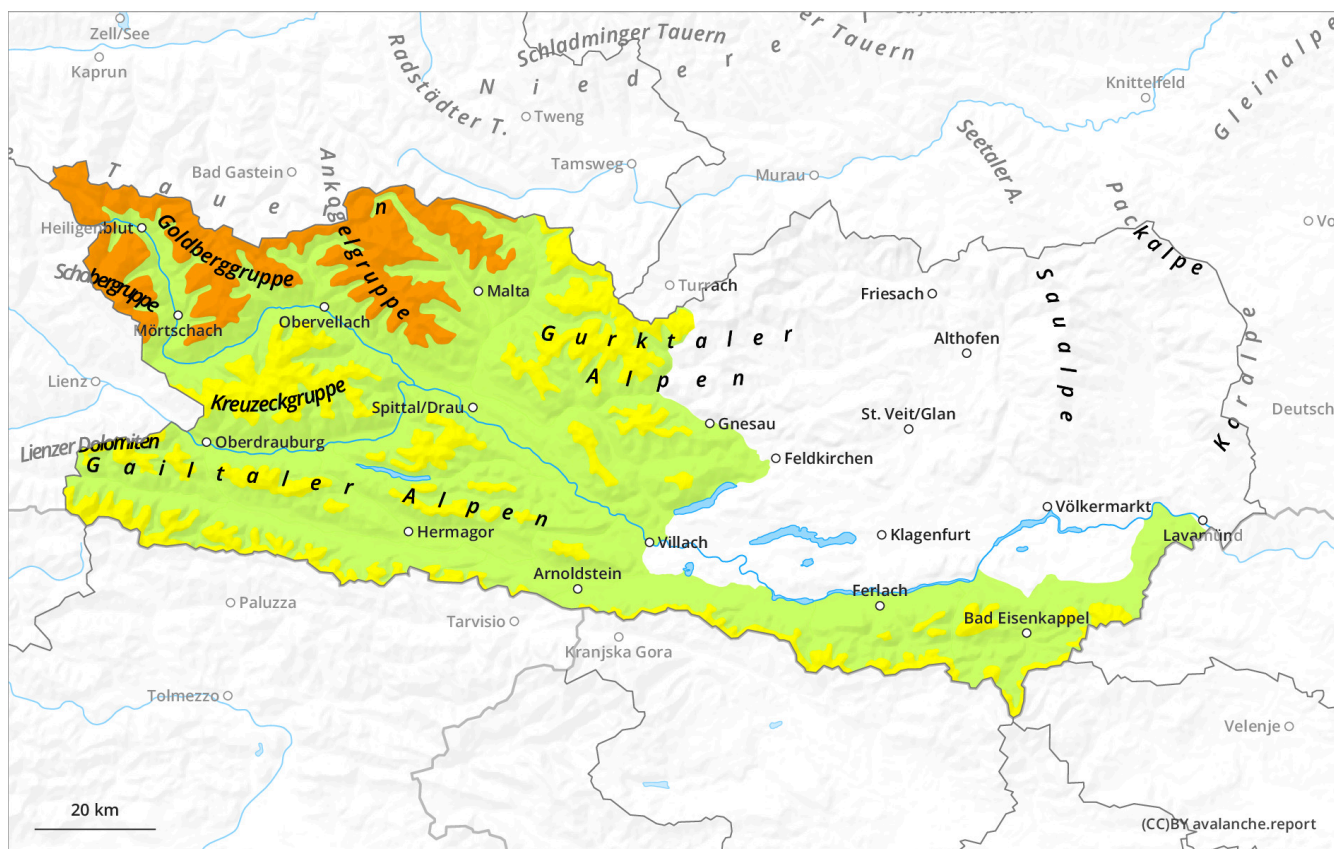


Published 21 Dec 2024, 17:00:00  
Valid from 21 Dec 2024, 17:00:00 until 22 Dec 2024, 17:00:00

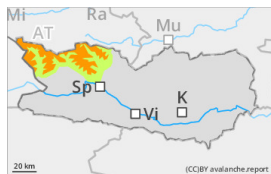
## Circumvent snowdrift accumulations



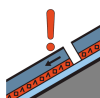
## Danger Level 3 - Considerable



**Tendency: Increasing avalanche danger**  
on Monday 23 December 2024



Wind slab



Persistent weak layer



**Circumvent snowdrift accumulations. Caution: persistent weak layer.**

### Danger assessment

As a result of fresh snow and increasingly stormy winds, wide-reaching snowdrift accumulations have been generated particularly in gullies and bowls and behind protruberances in the landscape. These drifts can be triggered easily by one single skier, or trigger naturally, in all aspects above 2200m. Avalanches can fracture down to more deeply embedded layers inside the snowpack on shady slopes in particular, and then grow to larger size. Whumpf noises and glide-cracks when the snowpack is tread upon are indicators of danger. Frequency and size of danger zones tend to increase with ascending altitude.

### Snowpack

#### Danger patterns

dp.6: cold, loose snow and wind

dp.1: deep persistent weak layer

Since Friday there has been 15-20cm of fresh snow along the Salzburg border. In the afternoon, 10-15 cm of fresh snow is anticipated. Moderate winds will transport the fresh snow. The cold fresh snow and fresh snowdrifts which lie deposited particularly in gullies, bowls and behind irregularities in the landscape, lie atop a weak old snowpack surface in all aspects above 2200m. Inside the old snowpack on shady wind-protected slopes there are faceted, expansively metamorphosed layers, particularly above 2200m. Naturally triggered and artificially triggered avalanches have brought to light the unfavorable snowpack layering. The snowpack is highly irregular over small areas.

### Weather

The Main Tauern Ridge will be subjected to barrier cloud accumulations from the north which will bring snowfall. A moderate westerly wind will be blowing, stronger at high altitudes. At 3000m: -9 degrees; at 2000m: -5 degrees; at 1000m: 0 degrees.

### Tendency

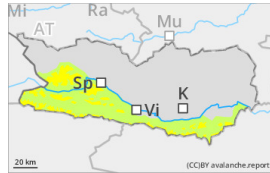
Avalanche bulletin Carinthia  
**Sunday 22 December 2024**

Published 21 Dec 2024, 17:00:00

Valid from 21 Dec 2024, 17:00:00 until 22 Dec 2024, 17:00:00

Avalanche danger levels are increasing.

## Danger Level 2 - Moderate



**Tendency: Constant avalanche danger** →  
on Monday 23 December 2024



Wind slab



## Evaluate snowdrift accumulations on shady slopes with great caution

### Danger assessment

Due to fresh snowfall and increasingly stormy winds, far-reaching snowdrift accumulations are being generated, particularly on shady slopes above 1800m: easily triggered or triggering naturally. Gullies and bowls are unfavorable, since weak layers are evident inside the old snow. Avalanches are sometimes medium-sized. Apart from the risk of being buried in snow masses, you also need to take the dangers of being swept along and forced to take a fall into consideration on extremely steep slopes. In addition, some small loose-snow avalanches can be expected especially at the foot of rock cliffs on extremely steep sunny slopes.

### Snowpack

#### Danger patterns

dp.1: deep persistent weak layer

Since Friday there has been up to 25cm of fresh snow along the Salzburg border, locally more. The often strong winds have transported the fresh snowfall. Snowdrift accumulations cover a weak old snowpack surface on shady slopes above 1800m. The old snowpack is faceted and expansively metamorphosed. The snowpack is highly irregular even over small areas.

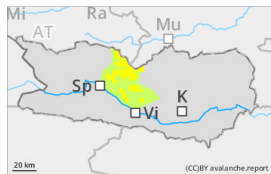
### Weather

On Sunday, cloudbanks will repeatedly pass through. As of midday, the clouds will become denser and in late afternoon a few snow showers will pass through. Moderate westerly to southwesterly winds will be blowing. At 2000m: -5 degrees; at 1000m: 0 degrees.

### Tendency

Avalanche danger levels are not expected to change significantly.

## Danger Level 2 - Moderate



**Tendency: Constant avalanche danger** →  
on Monday 23 December 2024



Wind slab



**Evaluate freshly generated snowdrift accumulations on shady slopes with great caution.**

### Danger assessment

Due to fresh snowfall and increasingly stormy winds, far-reaching snowdrift accumulations are being generated, particularly on shady slopes above 1800m: easily triggered or triggering naturally. Avalanches are mostly small-sized.

### Snowpack

#### Danger patterns

dp.6: cold, loose snow and wind

Up to 20cm of fresh snow was registered, locally more. The often storm-strength winds have intensively transported the snow. The fresh snowdrift accumulations blanket a weak old snowpack surface on shady slopes above 1800m. The old snowpack is faceted. The snowpack is highly irregular, even over small areas.

### Weather

On Sunday, cloudbanks will repeatedly pass through. As of midday, the clouds will become denser and in late afternoon a few snow showers will pass through. Moderate westerly to southwesterly winds will be blowing. At 2000m: -5 degrees; at 1000m: 0 degrees.

### Tendency

Avalanche danger levels are not expected to change significantly.