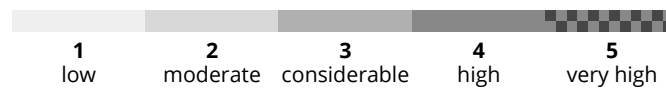
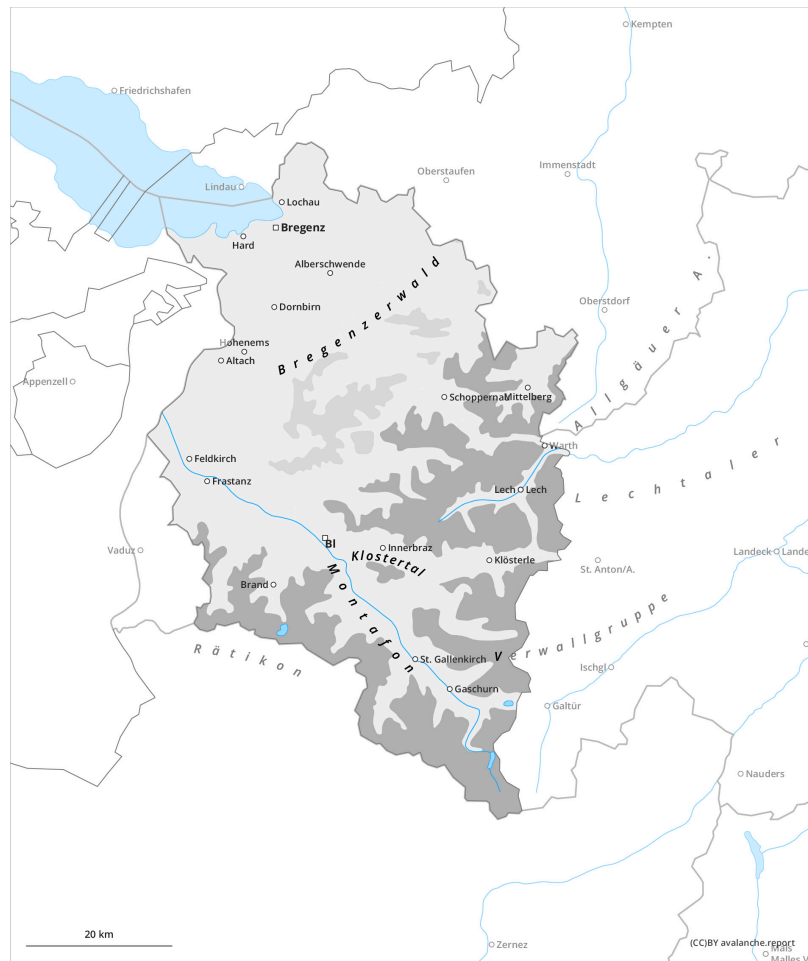
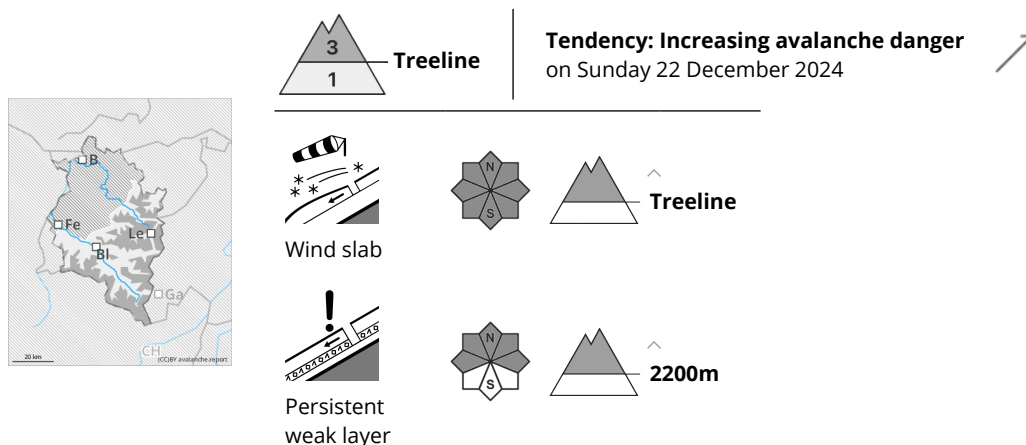


Avalanche situation remains treacherous for snow sports in outlying terrain



Danger Level 3 - Considerable



Fresh snowdrifts are the main danger

Danger assessment

Avalanche danger above the treeline is considerable, below that altitude danger is low. Snowdrift accumulations above the treeline can be easily triggered even by one single winter sports enthusiast and grow to medium size. Slab avalanches can often fracture down to more deeply embedded layers inside the snowpack and grow to large size. Danger zones occur particularly behind protruberances in the landscape, in gullies and blows and on wind-loaded slopes. These have been covered by fresh snow in many places, making them difficult to recognize. Whumpf noises and glide-cracks when the snowpack is stepped on are signals of danger. At low and intermediate altitudes on steep grass-covered slopes, small glide-snow avalanches are possible.

Snowpack

Since yesterday there has been 40-45cm of fresh snow registered in the barrier cloud regions, elsewhere 25-30cm. Due to strong-to-storm strength W/NW winds there has been wide-reaching transport. During the daytime due to brisk-to-strong NW winds, and tomorrow W/SW winds, additional trigger-sensitive snowdrift accumulations have been generated and will continue to be. The drifts lie deposited atop a weak old snowpack on high-altitude shady slopes, on sunny slopes often atop a thin melt-freeze crust. Weak layers can occur on high altitude slopes where the old snowpack was previously loose and also inside the snowdrifts themselves. During the daytime, in addition, graupel showers will pass through. At low altitudes the fresh snow and drifts lie deposited atop a moistened old snowpack surface with better consolidation.

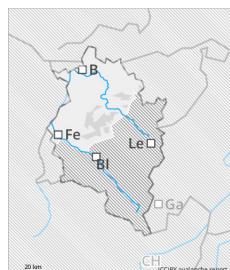
Weather

Dry weather far and wide in the mountains, lots of cloud cover and diffuse visibility but generally free of fog at summit levels. Sunshine only intermittently. The heavy frost will become milder. On Saturday night, snowfall is anticipated which can be persistent and heavy. At 2000m: -6 degrees. Moderate NW winds at high altitudes. In the evening, winds will shift to westerly and during Saturday night intensify.

Tendency

Following a brief improvement in weather conditions on Saturday, renewed precipitation will set in during Saturday night, accompanied by strong-to-storm strength W/NW winds. Avalanche danger levels are expected to increase significantly over widespread areas.

Danger Level 2 - Moderate



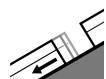
Tendency: Increasing avalanche danger
on Sunday 22 December 2024



Wind slab



Treeline



Gliding snow



Freshly generated snowdrifts require attentiveness.

Danger assessment

Avalanche danger above the treeline is moderate, below that altitude danger is low. Snowdrift accumulations above the treeline can be triggered by one single skier and in isolated cases grow to medium size. Danger zones occur especially behind protruberances in the landscape, in gullies and bowls, and on wind-loaded slopes. Size and frequency of these avalanche prone locations tend to increase with ascending altitude. They have been blanketed in some places, making them difficult to recognize. Below the treeline avalanche danger is low. At low altitudes small glide-snow avalanches are possible on steep grass-covered slopes.

Snowpack

Since yesterday there has been 25-30cm of fresh snow registered. Due to strong-to-storm strength W/NW winds there has been wide-reaching transport. During the daytime due to brisk-to-strong NW winds, and tomorrow W/SW winds, additional trigger-sensitive snowdrift accumulations have been generated and will continue to be. The drifts lie deposited atop a weak old snowpack on high-altitude shady slopes, on sunny slopes often atop a thin melt-freeze crust. Weak layers can occur on high altitude slopes where the old snowpack was previously loose and also inside the snowdrifts themselves. During the daytime, in addition, graupel showers will pass through. At low altitudes the fresh snow and drifts lie deposited atop a moistened old snowpack surface with better consolidation.

Weather

Dry weather far and wide in the mountains, lots of cloud cover and diffuse visibility but generally free of fog at summit levels. Sunshine only intermittently. The heavy frost will become milder. On Saturday night, snowfall is anticipated which can be persistent and heavy. At 2000m: -6 degrees. Moderate NW winds at high altitudes. In the evening, winds will shift to westerly and during Saturday night intensify.

Tendency

Avalanche bulletin Vorarlberg

Saturday 21 December 2024

Published 20 Dec 2024, 17:00:00

Valid from 20 Dec 2024, 17:00:00 until 21 Dec 2024, 17:00:00



Following a brief improvement in weather conditions on Saturday, renewed precipitation will set in during Saturday night, accompanied by strong-to-storm strength W/NW winds. Avalanche danger levels are expected to increase significantly over widespread areas.