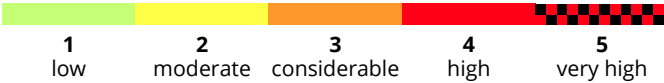
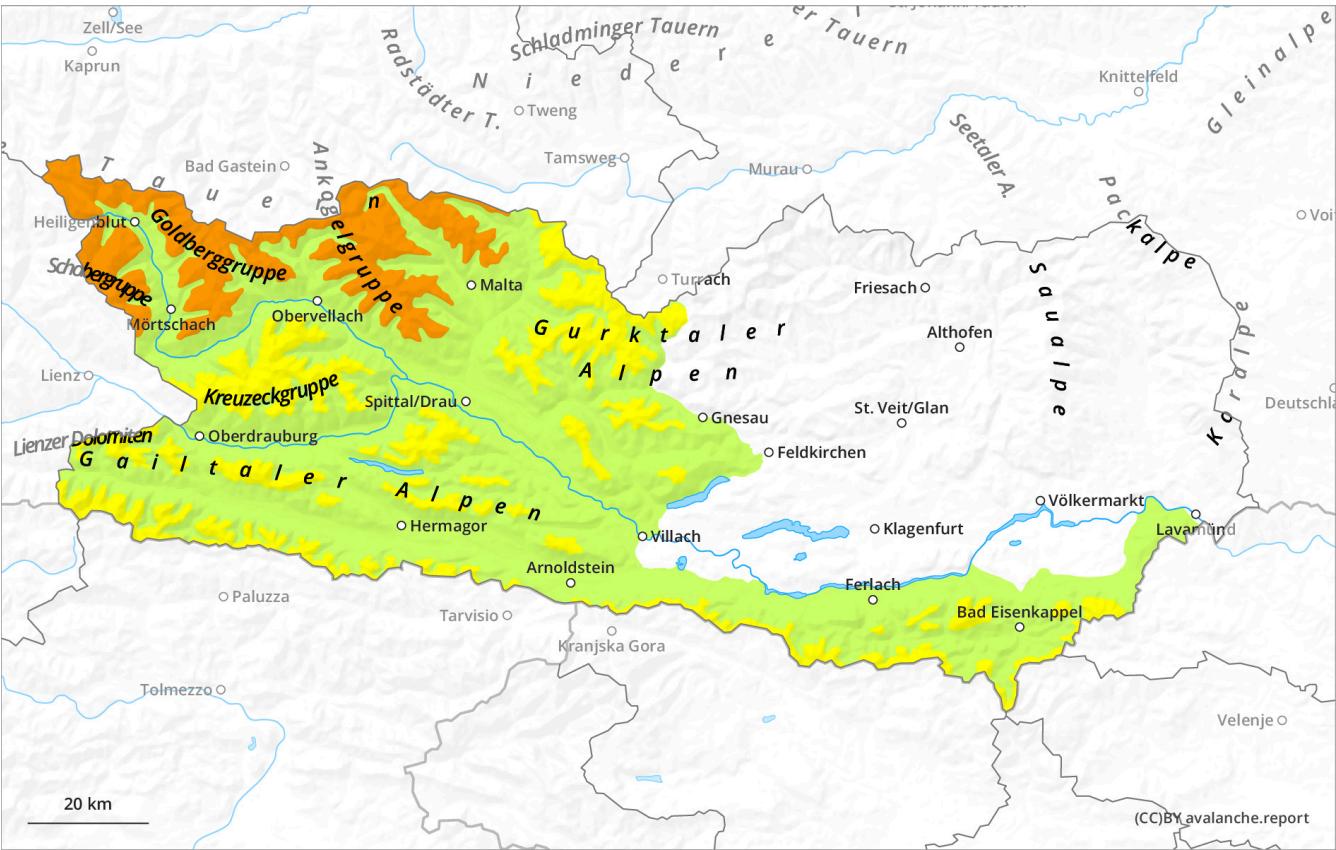


Published 20 Dec 2024, 17:00:00
Valid from 20 Dec 2024, 17:00:00 until 21 Dec 2024, 17:00:00

Evaluate freshly generated snowdrifts with caution

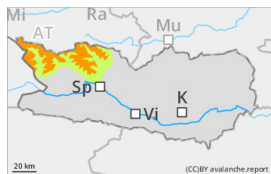


Danger Level 3 - Considerable



2200m

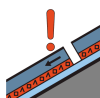
Tendency: Increasing avalanche danger
on Sunday 22 December 2024



Wind slab



2200m



Persistent
weak layer



2400m

Circumvent freshly generated snowdrift accumulations

Danger assessment

Due to fresh snowfall and increasingly stormy winds, far-reaching snowdrift accumulations are being generated, particularly at the foot of rock cliffs and behind protruberances in the landscape. These can be easily triggered in all aspects above 2200m or else trigger naturally. In addition, avalanches can fracture down to more deeply embedded layers inside the snowpack, especially along the Salzburg border where medium-sized releases are possible. Whumpf noises and glide-cracks when you tread upon the surface can be indicators of immediate danger. Frequency and sizes of danger zones tend to increase with ascending altitude.

Snowpack

Danger patterns

dp.6: cold, loose snow and wind

dp.4: cold following warm / warm following cold

Up to 20 cm of snowfall is expected from place to place. The widespread snowdrift accumulations on shady wind-protected slopes above 2200m are being deposited atop a weak old snowpack surface. At mid-level inside the old snowpack on shady, wind-protected slopes there are faceted, expansively metamorphosed weak layers evident. The snowpack is highly irregular even over small areas.

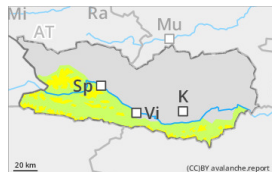
Weather

On Friday, early morning clouds will be dense, visibility poor. The snowfall level lie generally lie at 800m. Strong northerly winds will prevail, reaching storm strength in exposed terrain. At 2000m at midday: -8 degrees; at 3000m: -15 degrees.

Tendency

Evaluate snowdrift accumulations with great caution

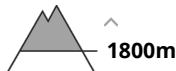
Danger Level 2 - Moderate



Tendency: Constant avalanche danger →
on Sunday 22 December 2024



Wind slab



Evaluate snowdrift accumulations on shady slopes with great caution

Danger assessment

Due to fresh snowfall and increasingly stormy winds, far-reaching snowdrift accumulations are being generated, particularly on shady slopes above 1800m: easily triggered or triggering naturally. Gullies and bowls are unfavorable, since weak layers are evident inside the old snow. Avalanches are mostly small-sized. Apart from the risk of being buried in snow masses, you also need to take the dangers of being swept along and forced to take a fall into consideration.

Snowpack

Danger patterns

dp.1: deep persistent weak layer

Especially along the Italian border, up to 25cm of fresh snow is anticipated, locally more. The snowdrift accumulations blanket a weak old snowpack on shady slopes above 1800m. The old snowpack is faceted and highly irregular over small areas.

Weather

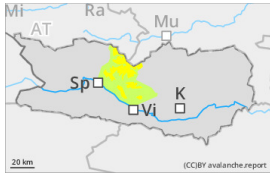
On Friday, early morning clouds will be dense, visibility poor, light snowfall regionally. The snowfall level lie generally lie at 500-800m. Precipitation will rapidly ease off, in the afternoon the clouds will disperse gradually in the southern mountain massifs. Strong northerly winds will prevail. At 2000m at midday: -8 degrees.

Tendency

Avalanche danger levels are not expected to change significantly.

Published 20 Dec 2024, 17:00:00
Valid from 20 Dec 2024, 17:00:00 until 21 Dec 2024, 17:00:00

Danger Level 2 - Moderate



Tendency: Constant avalanche danger
on Sunday 22 December 2024 →



Wind slab

