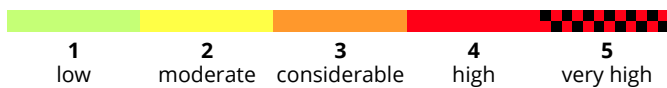
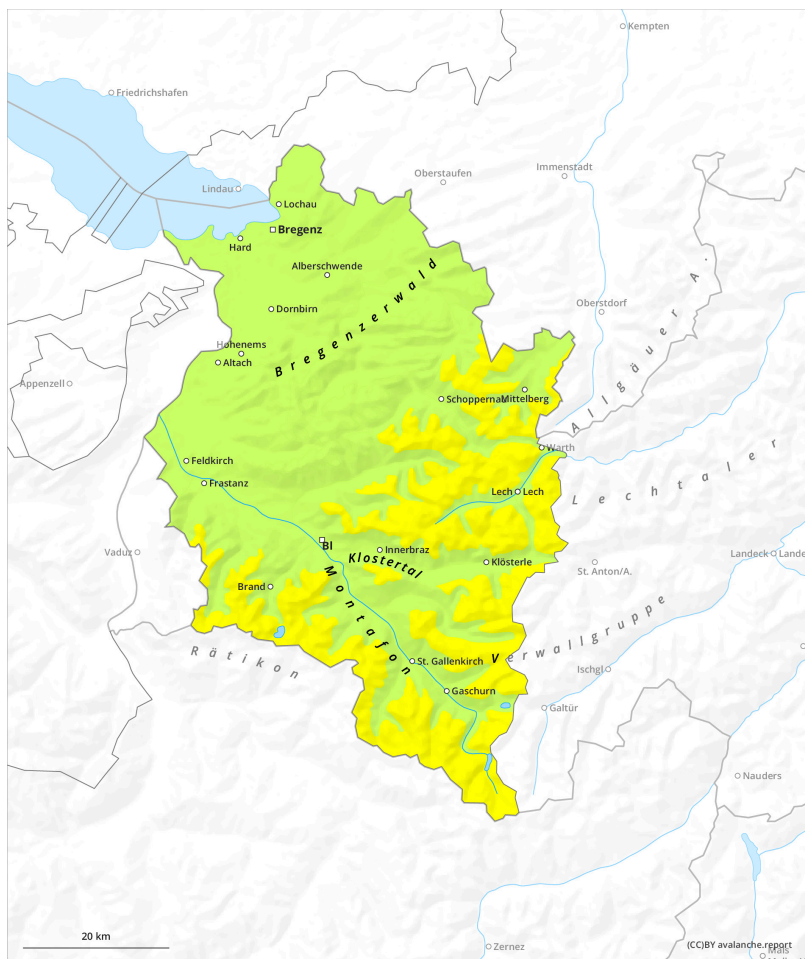
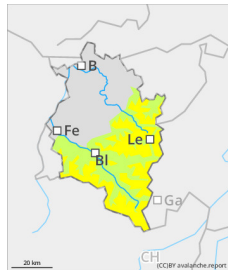


Avalanche danger mostly low, moderate at high altitudes



Danger Level 2 - Moderate



Tendency: Increasing avalanche danger
on Friday 20 December 2024



Persistent
weak layer



Weak layers in the old snow are the major danger.

Danger assessment

At high altitudes, older snowdrift accumulations and weak layers are often still prone to triggering. Danger zones occur mostly on shady slopes behind protruberances in the landscape, in gullies and bowls and on wind-loaded slopes. Size and spread tend to increase with ascending altitude. Small-to-medium slab avalanches can be triggered even by the weight of one single skier. At low altitudes on grass-covered slopes, small glide-snow avalanches can trigger.

Snowpack

Older snowdrift accumulations lie deposited mostly on steep shady slopes atop expansively metamorphosed layers or atop surface hoar. Bonding to the old snowpack surface deteriorates with increasing altitude. At high-altitude levels on shady slopes and in places where the snow is shallow, faceted layers are evident in the snowpack. On sunny slopes and at low altitudes, the uppermost layers of the snowpack are often encrusted due to solar radiation and higher temperatures. All in all, snow depths are highly varied, ridges are often utterly windblown or with little snow, gullies and bowls are filled to the brim with snow.

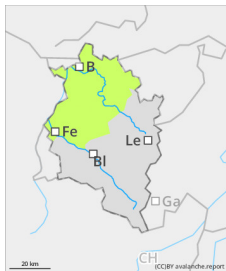
Weather

During the nighttime hours it will remain variably cloudy and dry. On Thursday, conditions will be pleasant from the start, and some foehn impact will be felt. Clouds will become denser during the daytime, some light precipitation is expected in late afternoon. At 2000m: from +6 to -1 degree. Brisk to strong-velocity W/SW winds at high altitudes.

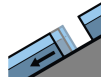
Tendency

Avalanche danger will increase slightly on Friday due to fresh fallen snow and wind impact.

Danger Level 1 - Low



Tendency: Increasing avalanche danger
on Friday 20 December 2024



Gliding snow



Avalanche danger is mostly low. Isolated glide-snow avalanches.

Danger assessment

Isolated danger zones are evident in extremely steep terrain. Small avalanches are possible there. Apart from the risks of being buried in snow masses, the danger of being forced to take a fall also requires consideration. Particularly on sunny slopes, moist loose-snow slides are possible. On steep grass-covered slopes where snowfall has been heavier, small glide-snow avalanches are also possible.

Snowpack

Due to milder temperatures, the snowpack has settled further and been able to consolidate. Fresh snow and drifts from recent days are generally well bonded with the old snowpack surface. During the daytime the uppermost layers are weakened due to higher temperatures and solar radiation. All in all, the snow depths are below average.

Weather

During the nighttime hours it will remain variably cloudy and dry. On Thursday, conditions will be pleasant from the start, and some foehn impact will be felt. Clouds will become denser during the daytime, some light precipitation is expected in late afternoon. At 2000m: from +6 to -1 degree. Brisk to strong-velocity W/SW winds at high altitudes.

Tendency

Avalanche danger will increase slightly on Friday due to fresh fallen snow and wind impact.