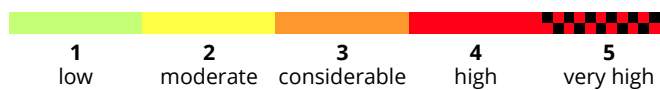
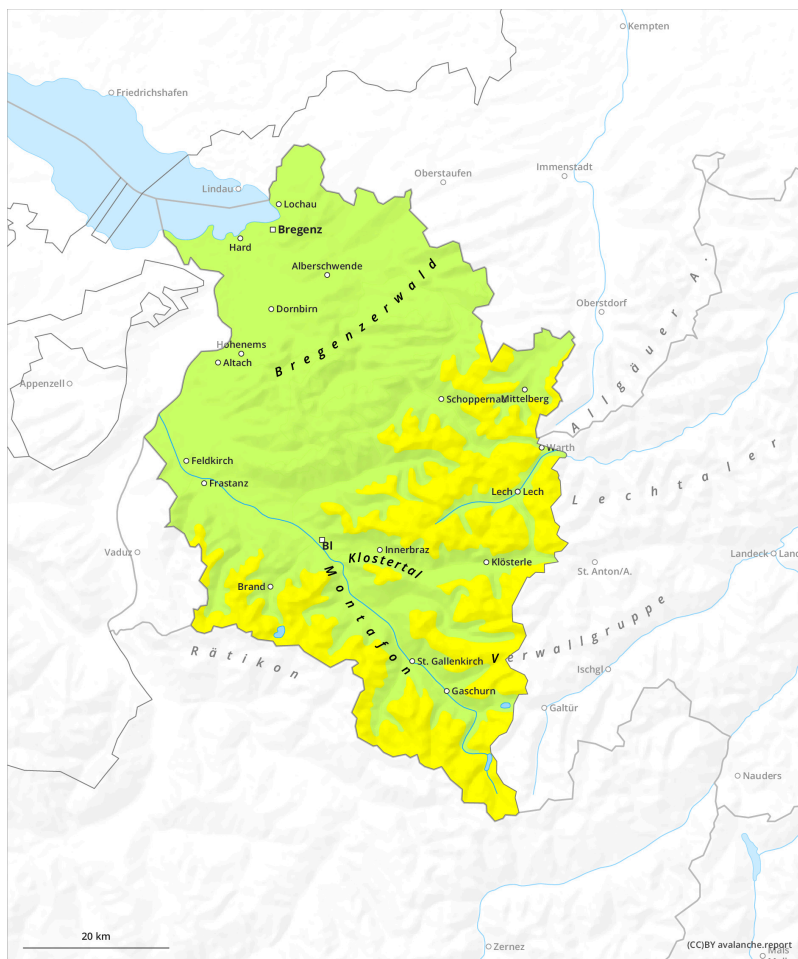


# Avalanche bulletin Vorarlberg

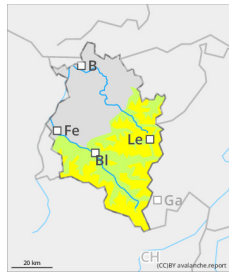
## Wednesday 18 December 2024

Published 17 Dec 2024, 17:00:00

Valid from 17 Dec 2024, 17:00:00 until 18 Dec 2024, 17:00:00



## Danger Level 2 - Moderate



**Tendency: Constant avalanche danger** →  
on Thursday 19 December 2024



**Fresh snowdrifts and old snow are main danger. Loose-snow and glide-snow avalanches due to higher temperatures.**

### Danger assessment

At high altitudes, fresh snowdrift accumulations are often still prone to triggering. Danger zones occur mostly on shady slopes behind protruberances in the landscape, in gullies and bowls and on wind-loaded slopes. Size and spread tend to increase with ascending altitude. Small-to-medium slab avalanches can be triggered even by the weight of one single skier. Above 2400m, isolated avalanches can be triggered in the old snow and grow to medium size. At low altitudes and particularly on sunny slopes, moist loose-snow avalanches and small-to-medium glide-snow avalanches can trigger due to the higher temperatures.

### Snowpack

The most recent snowfall and snowdrifts are deposited mostly on steep shady slopes atop metamorphosed old snowpack layers or atop surface hoar, poorly bonded with the old snowpack surface with ascending altitude. In places in high-altitude shady spots and where the snow is shallow, weak faceted layers are evident in the snowpack. All in all, the snowpack is highly varied: ridges are often windblown, gullies and bowls are filled to the brim with snow.

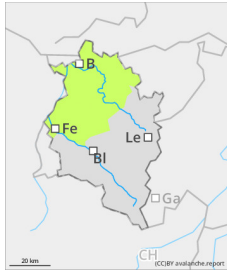
### Weather

At high altitudes the air will become moister, generating widespread cloudbanks above the summits and permitting only limited sunshine. The zero-degree level will ascend to 2900m. At 2000m: +6 degrees. Winds will be moderate to brisk from the west.

### Tendency

Snowdrifts and old snow are the main danger at high altitudes. At low altitudes, slides and small glide-snow avalanches are possible, esp. on steep sunny slopes.

## Danger Level 1 - Low



**Tendency: Constant avalanche danger** →  
on Thursday 19 December 2024



Wet snow



**Avalanche danger is mostly low. Slides and glide-snow avalanches due to higher temperatures.**

### Danger assessment

Isolated danger zones are evident in extremely steep terrain. Small avalanches are possible there. Apart from the risks of being buried in snow masses, the danger of being forced to take a fall also requires consideration. Particularly on sunny slopes, moist loose-snow slides are possible. On steep grass-covered slopes where snowfall has been heavier, small glide-snow avalanches are also possible.

### Snowpack

Due to milder temperatures, the snowpack has settled further and been able to consolidate. Fresh snow and drifts from recent days are generally well bonded with the old snowpack surface. During the daytime the uppermost layers are weakened due to higher temperatures and solar radiation. All in all, the snow depths are below average.

### Weather

At high altitudes the air will become moister, generating widespread cloudbanks above the summits and permitting only limited sunshine. The zero-degree level will ascend to 2900m. At 2000m: +6 degrees. Winds will be moderate to brisk from the west.

### Tendency

Avalanche danger levels are not expected to change significantly. Slides and small glide-snow avalanches are still possible.