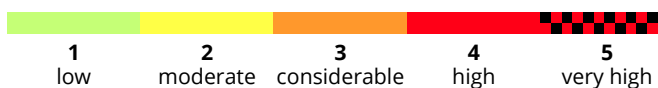
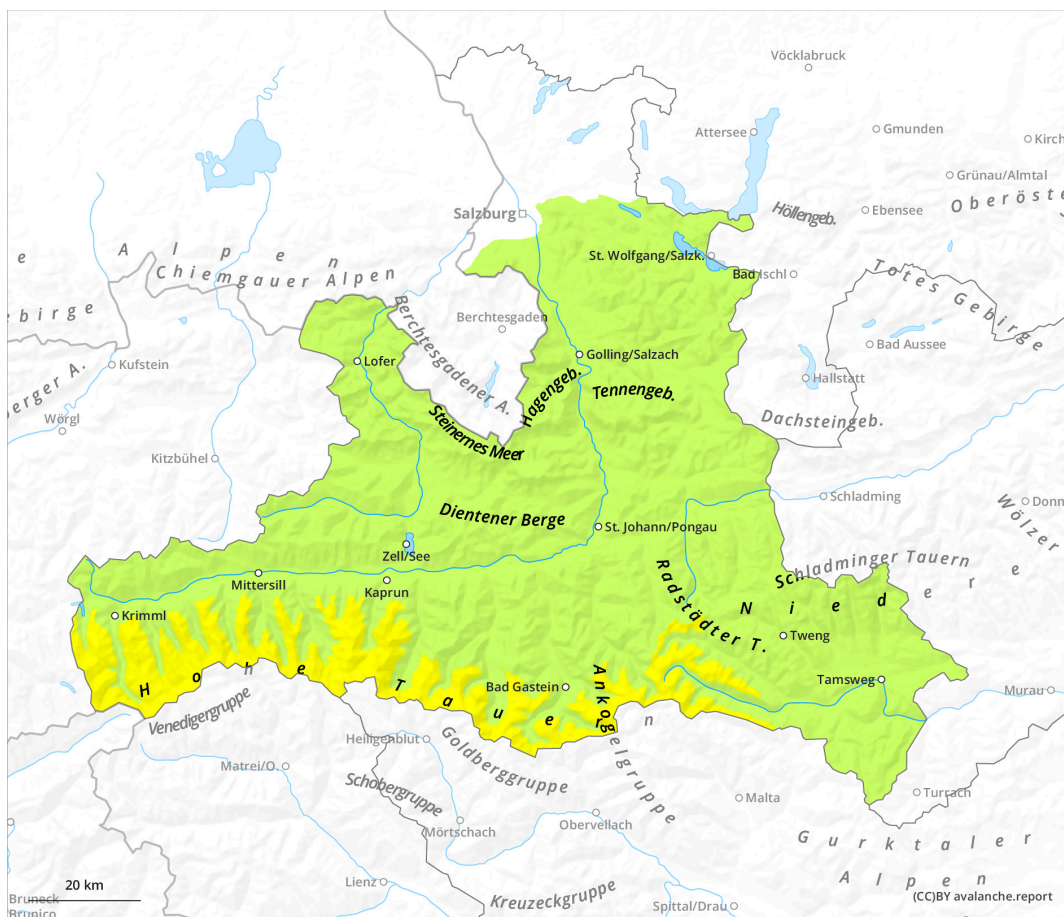
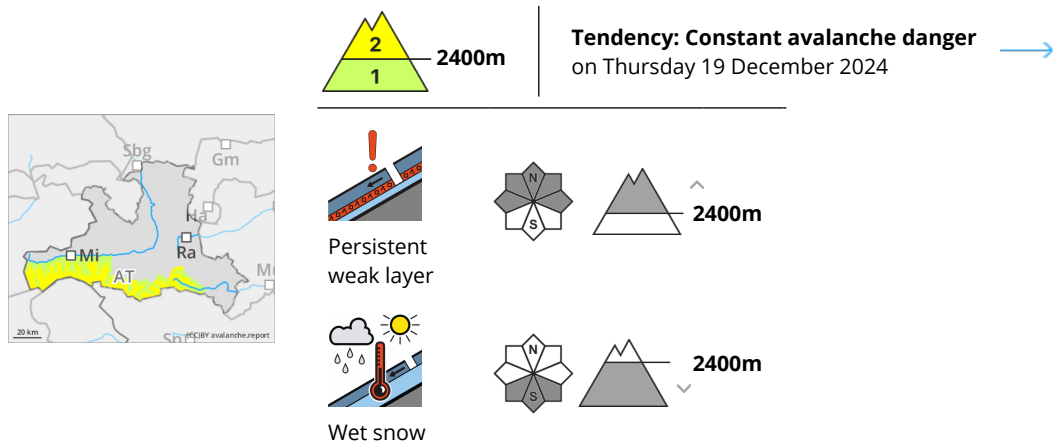


Persistent weak layer at high altitudes: caution! Small, naturally triggered loose-snow avalanches possible during daytime.



Danger Level 2 - Moderate



Persistent weak layer at high altitudes: caution!

Danger assessment

Avalanche danger above 2400m is moderate, below that altitude danger is low. Main danger: persistent weak layer Slabs can be triggered even by one single skier, particularly on W/N/E facing slopes, in transitions from shallow to deep snow. Avalanches can reach medium size During the course of the day, small wet-snow slides can trigger naturally due to higher temperatures and solar radiation, particularly on south-facing slopes below 2400m and in extremely steep terrain (>40°). In addition, small glide-snow avalanches are possible in all aspects at any time of day or night. Small slabs in the snowdrifts are triggerable only in few places: near ridgelines, on shady slopes from minimum additional loading.

Snowpack

In high alpine regions there are faceted layers inside the old snowpack which are often covered by hardened layers. In addition, there are still loose layers near the surface which are covered. At lower and intermediate altitudes the snowpack is moistened by higher temperatures, in places it is completely wet. Overnight a melt-freeze crust can form in these places which then softens up during the daytime. The snowpack currently evidences no marked weak layers. On grass-covered slopes and over rocky plates, the entire snowpack can start to glide.

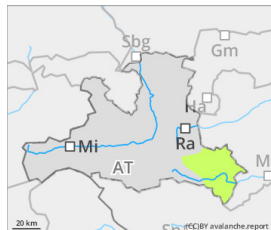
Weather

On Wednesday, intermediate-altitude cloudbanks and sunshine will shift back and forth, the peaks will mostly remain free of clouds. In the afternoon, more sunshine is expected. Winds will be moderate to brisk from westerly directions. At 2000m +5 degrees; at 3000m: -1 degree.

Tendency

On Thursday, little change is expected. On Friday, snowdrift problem will intensify due to fresh snowfall and winds.

Danger Level 1 - Low



Tendency: Constant avalanche danger →
on Thursday 19 December 2024



No distinct
avalanche
problem



Low avalanche danger. Not much snow.

Danger assessment

Avalanche danger is low. Due to higher temperatures and solar radiation, small loose-snow slides can release naturally during the course of the day.

Snowpack

Due to rising temperatures, the snowpack has receded and is moistened at surface level up to intermediate altitudes, or else utterly wet. Overnight a melt-freeze crust can form which will then soften up during the daytime. The snowpack evidences currently no marked weak layers. There is, all in all, little snow on the ground.

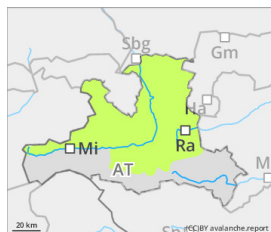
Weather

On Wednesday, intermediate-altitude cloudbanks and sunshine will shift back and forth, the peaks will mostly remain free of clouds. In the afternoon, more sunshine is expected. Winds will be moderate to brisk from westerly directions. At 2000m +5 degrees.

Tendency

Little change expected in avalanche danger levels

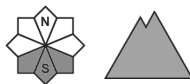
Danger Level 1 - Low



Tendency: Constant avalanche danger →
on Thursday 19 December 2024



Wet snow



Loose-snow slides during the daytime in extremely steep terrain