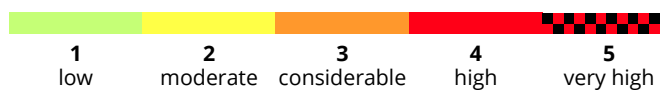
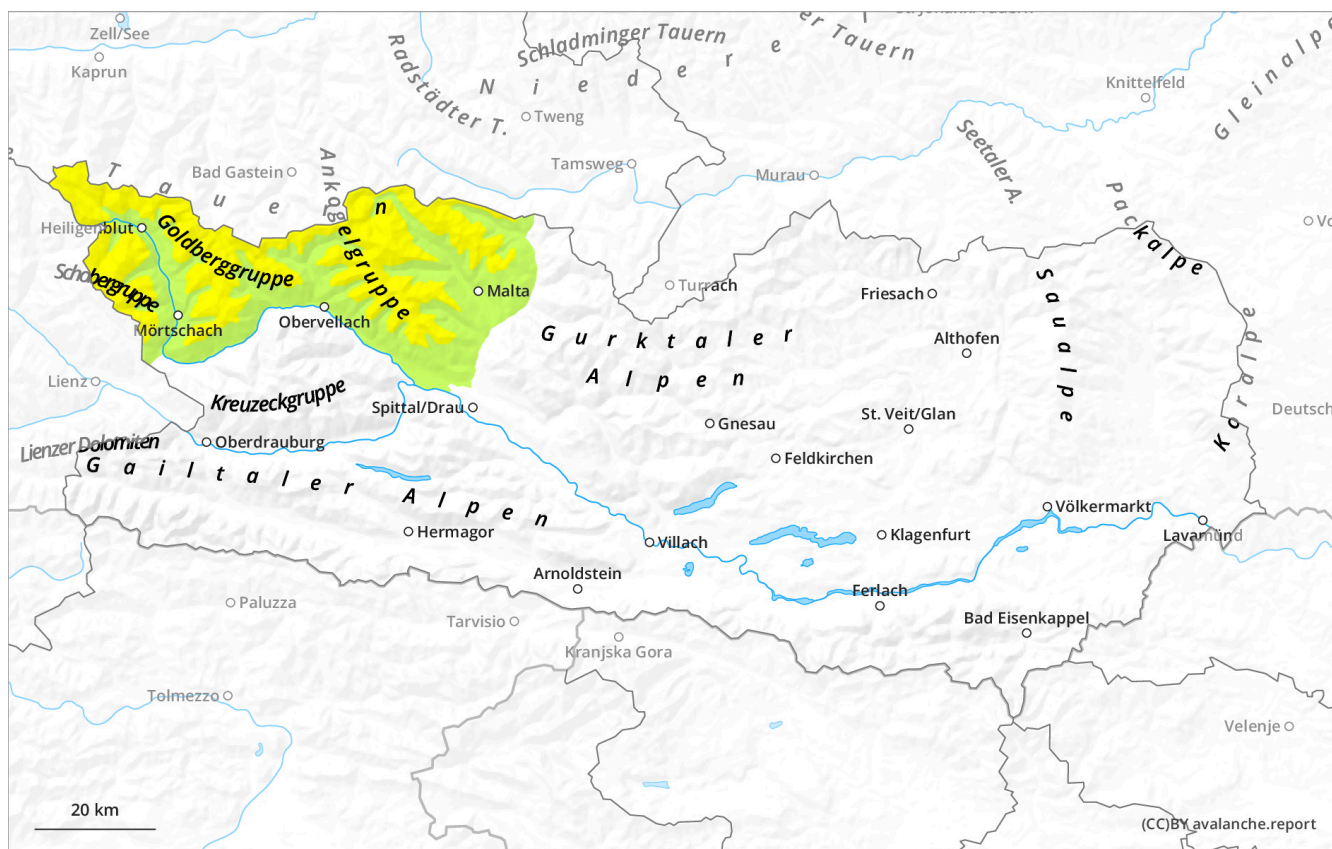


Wednesday 18 December 2024

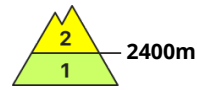
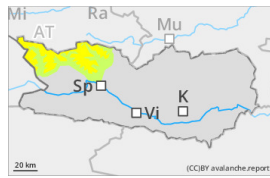
Published 17 Dec 2024, 17:00:00

Valid from 17 Dec 2024, 17:00:00 until 18 Dec 2024, 17:00:00

Weak layers in the old snow require caution



Danger Level 2 - Moderate



Tendency: Decreasing avalanche danger
on Thursday 19 December 2024



Persistent
weak layer



Weak layers in old snow require attentiveness.

Danger assessment

Avalanches can be triggered in the weak old snow even by one single skier, esp. on shady slopes above 2400m in transition zones into gullies and bowls. Avalanches are often medium-sized. Frequency and size of danger zones tend to increase with ascending altitude. In addition, fresher snowdrift accumulations on NW/N/E facing slopes are still prone to triggering, particularly on shady, wind-protected slopes.

Due to higher temperatures, isolated loose-snow avalanches will be possible during the course of the day, particularly on extremely steep sunny slopes, especially along the Salzburg border in case of extended bright intervals.

Snowpack

Danger patterns

dp.1: deep persistent weak layer

Strong-velocity winds have intensively transported the fresh and old snow. At intermediate levels of the old snowpack on shady, wind-protected slopes there are faceted, metamorphosed weak layers. Weather conditions are reinforcing a gradual consolidation of the snowpack on SE/S/SW facing slopes, particularly above 2600m. At all altitudes there is too little snow on the ground for this juncture of the season. The snowpack is highly irregular over small areas.

Weather

On Wednesday the extremely mild weather conditions will continue, it will be quite sunny, accompanied by high-altitude clouds which could dampen the sunshine somewhat. Summits will be free, visibility quite good. Light westerly winds. At 3000m: 0 degrees; at 2000m: +7 degrees; at 1000m: +11 degrees.

Tendency

Avalanche danger levels will gradually recede.