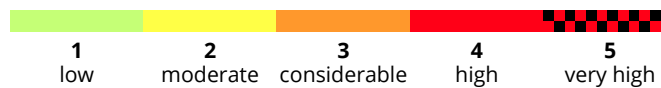
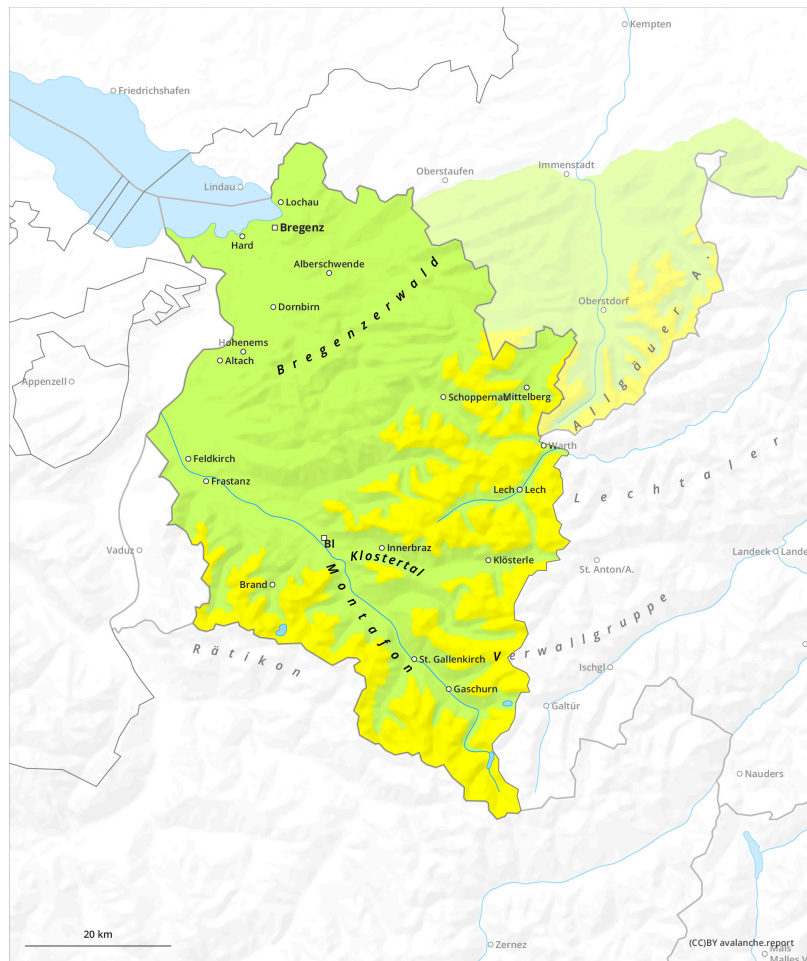


# Avalanche bulletin Vorarlberg

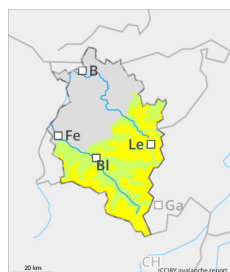
## Tuesday 17 December 2024

Published 16 Dec 2024, 17:00:00

Valid from 16 Dec 2024, 17:00:00 until 17 Dec 2024, 17:00:00



## Danger Level 2 - Moderate



**Tendency: Constant avalanche danger** →  
on Wednesday 18 December 2024



Wind slab



Persistent  
weak layer



**Fresh snowdrifts are main danger. Loose-snow and glide-snow avalanches due to higher temperatures.**

### Danger assessment

At high altitudes, fresh snowdrift accumulations are prone to triggering. Danger zones occur mostly on shady slopes behind protruberances in the landscape, in gullies and bowls and on wind-loaded slopes. Size and spread tend to increase with ascending altitude. Small-to-medium slab avalanches can be triggered even by the weight of one single skier. At low altitudes and particularly on sunny slopes, moist loose-snow avalanches and small-to-medium glide-snow avalanches can trigger due to the higher temperatures.

### Snowpack

The fresh snowfall is being deposited mostly on steep shady slopes atop metamorphosed old snowpack layers or atop surface hoar. On east-facing and sunny slopes, often atop encrusted surfaces. As a result of strong NW winds, widespread snowdrifts will accumulate. The fresh snow will be increasingly poorly bonded with the old snowpack surface with ascending altitude. In places in high-altitude shady spots and where the snow is shallow, weak faceted layers are evident in the snowpack. All in all, the snowpack is highly varied: ridges are often windblown, gullies and bowls are filled to the brim with snow.

### Weather

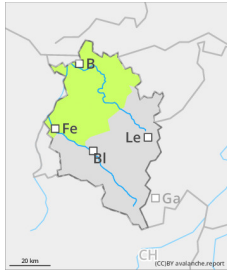
Monday will be very sunny and temperatures will rise during the course of the day. During the afternoon, thaw-weather will set in below 2000m. Winds will ease off. At 2000m: -8 to +3 degrees. Moderate to light NW winds.

### Tendency

The zero-degree level will ascend to nearly 3000m on Tuesday. High-altitude winds will be westerly, blowing at strong-to-stormy velocity. Snowdrifts are the main danger at high altitudes. At low altitudes, slides and

glide-snow avalanches are possible.

## Danger Level 1 - Low



**Tendency: Constant avalanche danger** →  
on Wednesday 18 December 2024



Wet snow



**Above the treeline, snowdrifts. Loose-snow and glide-snow avalanches due to higher temperatures.**

### Danger assessment

Above the treeline, fresh snowdrift accumulations are prone to triggering. Danger zones occur mostly on shady slopes behind protruberances in the landscape, in gullies and bowls and on wind-loaded slopes. Small, in isolated cases medium-sized avalanches can be triggered even by one single skier. At low altitudes, particularly on sunny slopes, moist loose-snow avalanches and small glide-snow avalanches are possible on steep grassy slopes.

### Snowpack

The latest bout of fresh snowfall is being deposited mostly on steep shady slopes atop metamorphosed old snowpack layers or atop surface hoar. On east-facing and sunny slopes, often atop encrusted surfaces. As a result of strong NW winds, widespread snowdrifts will accumulate. The fresh snow will be increasingly poorly bonded with the old snowpack surface with ascending altitude. In places in high-altitude shady spots and where the snow is shallow, weak faceted layers are evident in the snowpack. All in all, the snowpack is highly varied: ridges are often windblown, gullies and bowls are filled to the brim with snow.

### Weather

Monday will be very sunny and temperatures will rise during the course of the day. During the afternoon, thaw-weather will set in below 2000m. Winds will ease off. At 2000m: -8 to +3 degrees. Moderate to light NW winds.

### Tendency

Tuesday will be quite sunny and mild. Avalanche dangers are not expected to change significantly. Slides and small glide-snow avalanches are still possible.