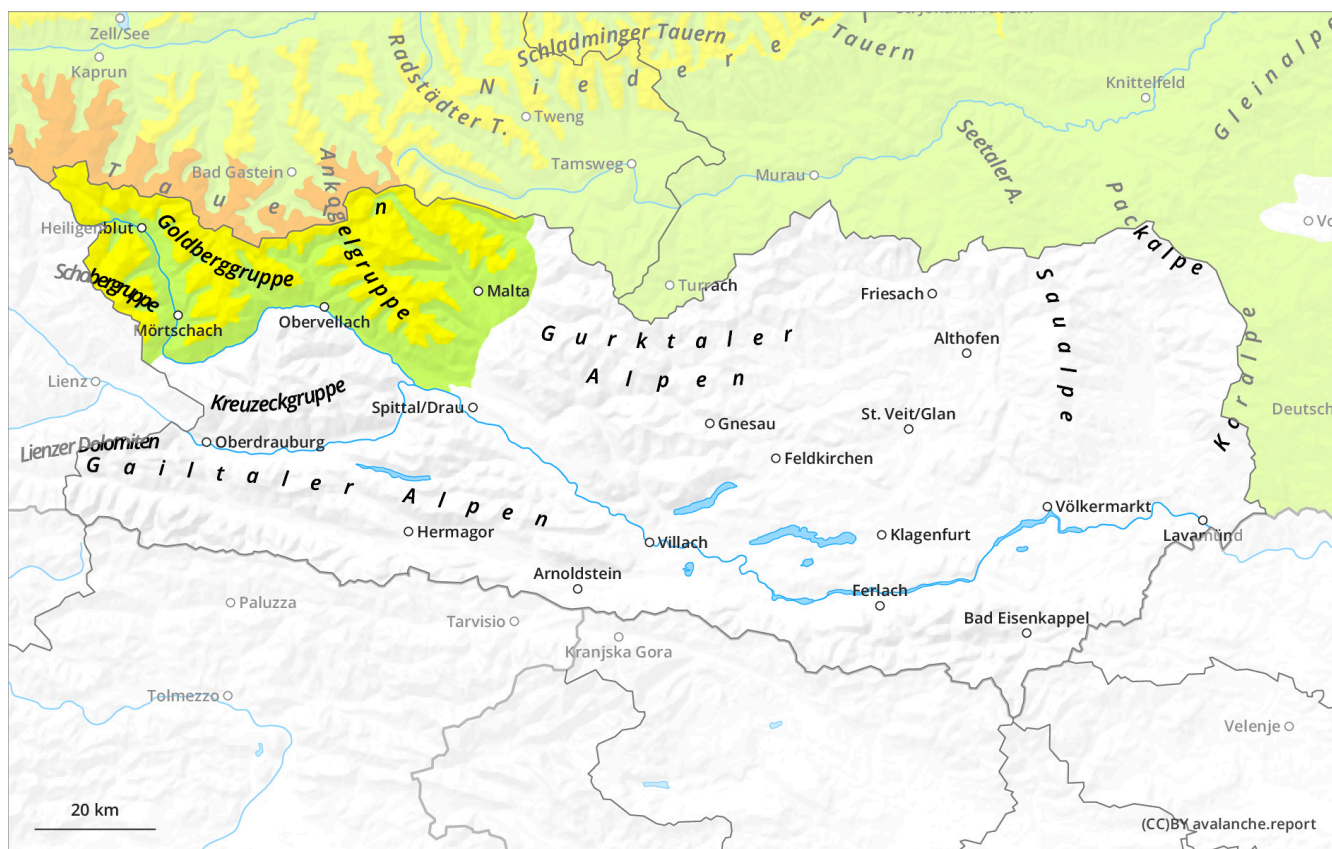


Monday 16 December 2024

Published 15 Dec 2024, 17:00:00

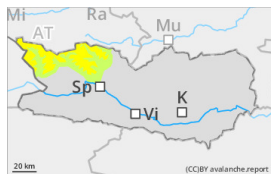
Valid from 15 Dec 2024, 17:00:00 until 16 Dec 2024, 17:00:00



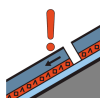
Danger Level 2 - Moderate



Tendency: Decreasing avalanche danger
on Tuesday 17 December 2024



Wind slab



Persistent
weak layer



Fresh fallen snow and esp. freshly-generated snowdrifts are main danger widespread

Danger assessment

As a result of fresh snow and often storm-strength winds, trigger-sensitive snowdrift accumulations are being generated esp. in gullies and bowls, behind protruberances in the landscape as well as in general above 2200m. These masses can often be triggered by the weight of one single skier or else trigger naturally. Avalanches occasionally grow to medium size. In addition, avalanches can in some places trigger in the weak old snow, particularly in ridgeline zones and in transitions into gullies and bowls.

Frequency and size of the danger zones tend to increase with ascending altitude. .

Whumpf noises and cracks when treading upon the snowpack are alarm signals: they indicate immediate danger.

Snowpack

Danger patterns

dp.6: cold, loose snow and wind

dp.1: deep persistent weak layer

In the early morning hours, up to 10cm of fresh snowfall is anticipated, locally more.. The often stormy winds will transport the fresh snow, also some of the old snow. The freshly generated snowdrift accumulations will be deposited above 2200m atop a weak old snowpack surface.

The old snowpack surface is metamorphosed and faceted, the surface is loosely-packed.

At all altitudes, there is too little snow on the ground for this juncture of the season. Snow is distributed highly irregularly, even over small areas.

Weather

On the Main Tauern Ridge, dense clouds are accumulating from the north, thus shrouding the peaks in fog and provoking isolated snow showers. At summit altitudes, strong to storm-strength winds from the northwest will be blowing, gusts reaching peaks of 70 km/hr. At 2000m: -6 degrees; at 3000m: -14 degrees.

Tendency

Weather conditions, and thus, also avalanche danger developments are still uncertain.